

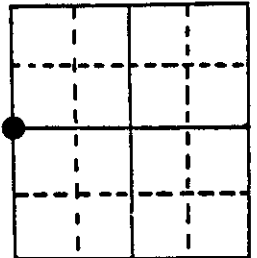
# U.S. PUBLIC LAND SURVEY MONUMENT RECORD

Note: This form is intended and designed to fulfill all requirements of Wisconsin Administrative Code, Chapter A-E 5.02, U.S. Public Land Survey Monument Record (3) (a) (b) (c) (d) (e) (f) (g) (h) (i). An additional sheet may be added if necessary to conform with said requirements.

(a) Corner location: Township 36 North

West Quarter  
Corner

Range 8 East



Section 12

Town Crescent

County Oneida

(b) (f) (g) (h) Description of monument found at this corner and if it was accepted, state all evidence (material, testimonial, occupational, plats, records, other monuments) used as a basis for accepting. If not accepted or if nothing was found, state evidence used as basis for establishing location. If reestablished through lost corner proportionate methods, indicate all monuments, distances and directions used to establish.

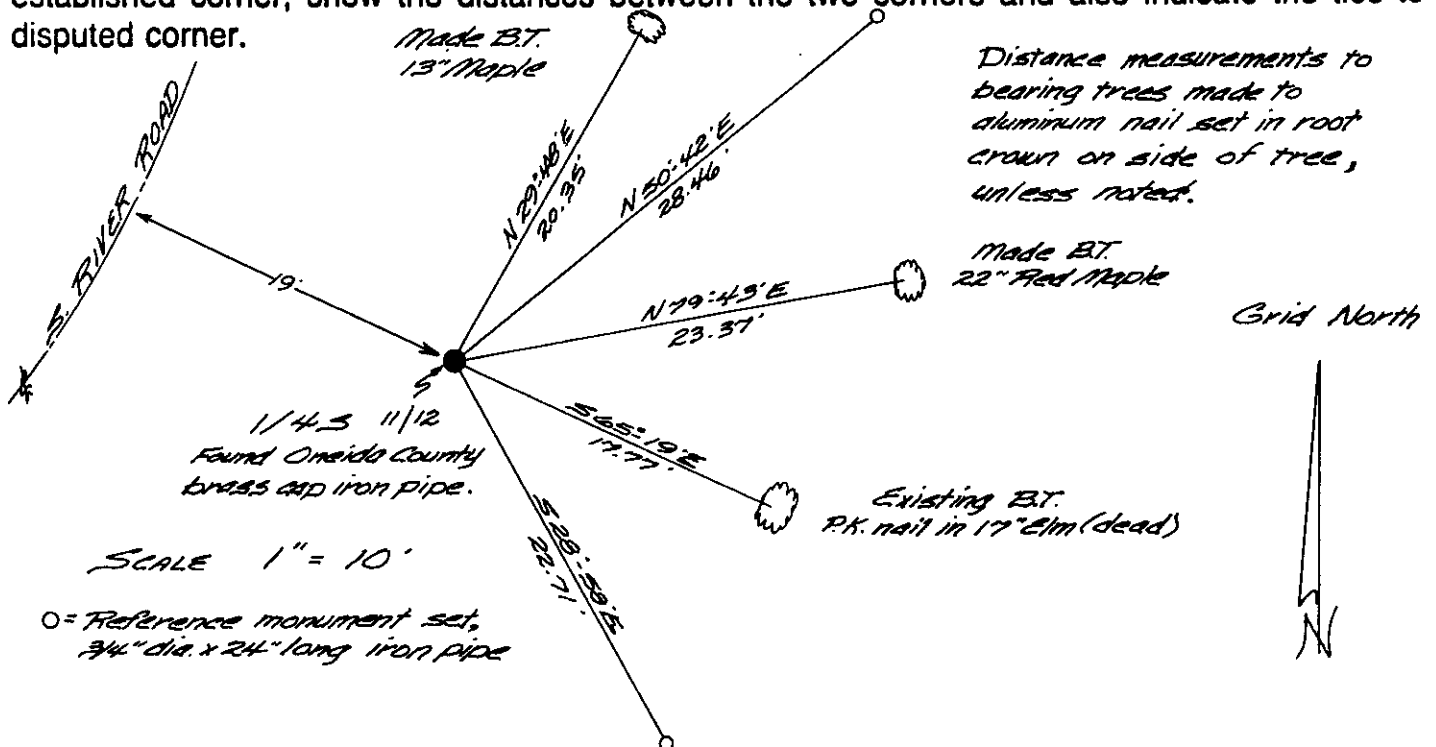
July 1863 - William E. Daugherty, Deputy Surveyor - Set quarter section post. Original bearing trees: Birch 14" S51°E, 39 lks.; Birch 12" N45°W, 25 lks.

May 1895 - B. F. Dorr, Oneida County Surveyor - W 1/4 P. Pine 18" S71°W, 44.5 lks.  
Pine 18" S6.5°E, 24.5 lks.

April 1948 - F. R. Wincentsen, Deputy County Surveyor - Found iron pipe (old). Found B. F. Dorr's S.E. B.T. New Elm 15 S66°E, 17.8'; Birch 8" S12°E, 27.4'.

August 5, 1985 - Found Oneida County brass capped 2" dia. iron pipe up 1 1/2 feet. Top of iron pipe bent South, bottom of pipe plumb and not disturbed, straightened and reset same monument plumb. Monument now extends 6" above ground level in the easterly ditch line of S. River Road 19 feet from centerline and 26 feet westerly from top bank of Wisconsin River Existing bearing tree, dead Elm S65°-19'E, 17.77'.

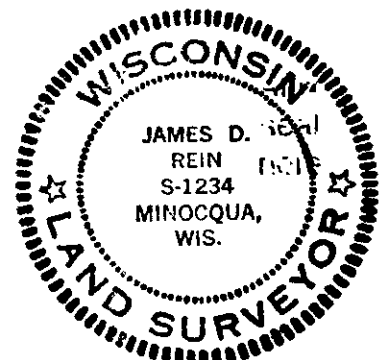
(c) (d) (e) Plan view of corner with ties to at least 4 witness monuments. If in disagreement with previously established corner, show the distances between the two corners and also indicate the ties to the disputed corner.



(i) I, James D. Rein, Reg. Land Surveyor No. S-1234  
(type or print name) certify that the corner location on this record was determined by me or under my direction and control and that this U.S. Public Land Survey Monument Record is correct and complete to the best of my knowledge and belief.

James D. Rein  
Signature

October 19, 1985  
Date



Index No. 6-21

3608112000

# U.S. PUBLIC LAND SURVEY MONUMENT RECORD

REGISTER OF DEEDS OFFICE  
ONEIDA COUNTY  
FILED

SEP 08 2020

KYLE J. FRANSON  
REGISTER OF DEEDS

Note: This form is intended and designed to fulfill all requirements of the Wisconsin Administrative Code, Chapter A-E 7.08 U.S. Public Land Monument Record (3)(a)(b)(c)(d)(e)(f)(g)(h)(i). An additional sheet may be added if necessary to conform with said requirements.

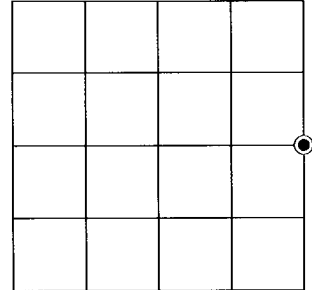
**(a) CORNER LOCATION:**

East Quarter Corner of Section 11  
Township 36 North  
Range 8 East  
City of Rhinelander  
County of Oneida

North:  
East:  
Datum:  
GNSS Method:  
GNSS Control:

(RECORDING AREA)

SECTION 11



**(b) HISTORY OF ORIGINAL CORNER ESTABLISHMENT**

Original Surveyor:  
Date of Survey: Commenced  
Completed  
Original B.T.'S

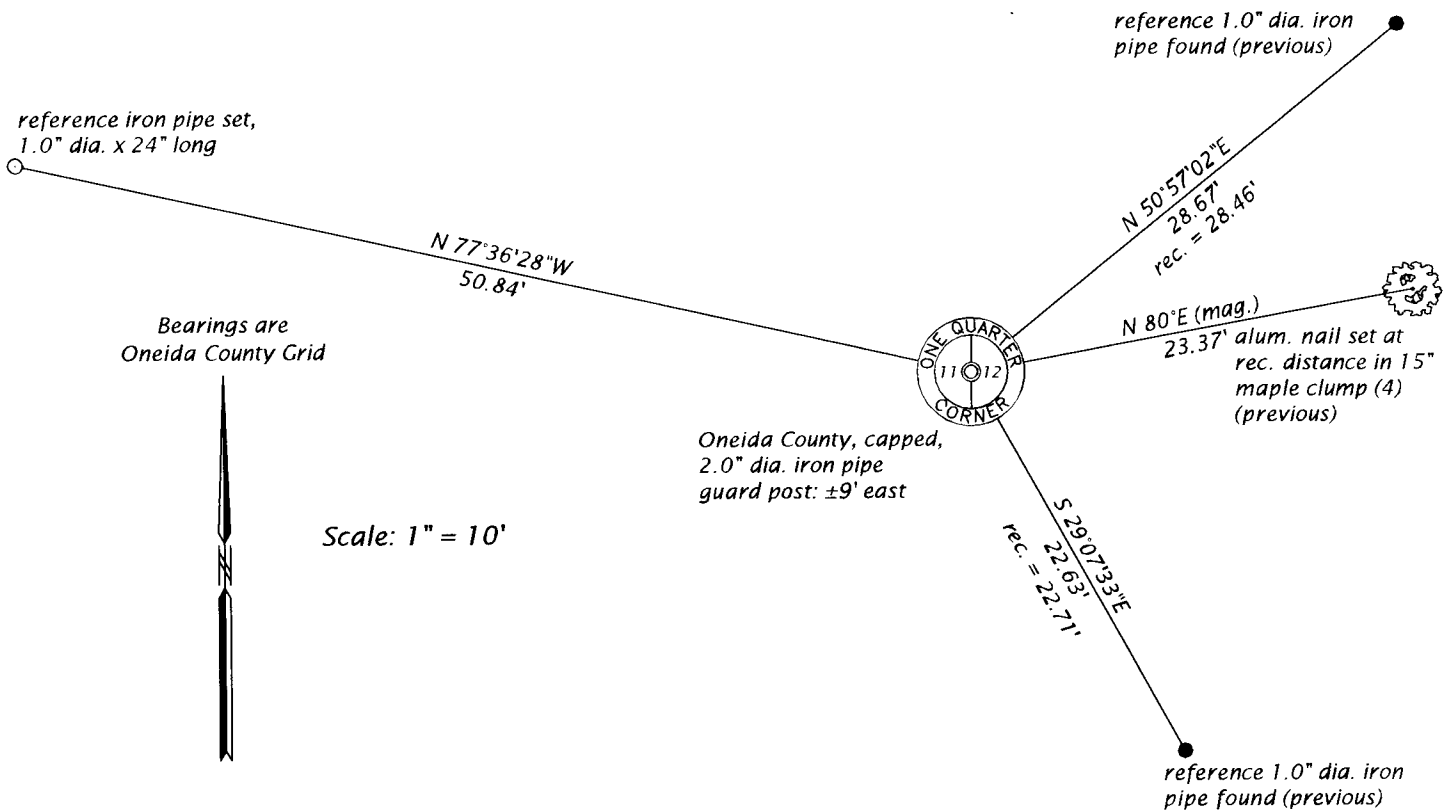
**SEE PREVIOUS U.S.P.L.S. MONUMENT RECORD DATED OCTOBER 19, 1985.**

(f)(g)(h) DESCRIPTION OF MONUMENT FOUND AT THIS CORNER AND IF IT WAS ACCEPTED, STATE ALL EVIDENCE (MATERIAL, TESTIMONIAL, OCCUPATIONAL, PLATS, RECORD, OTHER MONUMENTS) USED AS A BASIS FOR ESTABLISHING LOCATION. IF NOT ACCEPTED OR IF NOTHING WAS FOUND, STATE EVIDENCE USED AS BASIS FOR ESTABLISHING LOCATION. IF REESTABLISHED THROUGH LOST CORNER PROPORTIONATE METHODS, INDICATE ALL MONUMENTS, DISTANCES AND DIRECTIONS USED TO ESTABLISH. INDICATE TYPE OF MONUMENT AND SIGN POST FOUND OR SET.

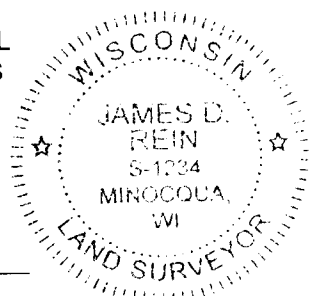
This is a perpetuation of a previous U.S.P.L.S. Monument Record by James D. Rein, RLS, dated October 19, 1985, and filed in the office of the Oneida County Register of Deeds. A complete history of the corner can be found on the previous monument record. I accept the previous location as a true and faithful perpetuation or reestablishment of the original corner location and further perpetuate it as follows.

June 15, 2020, James D. Rein, P.L.S. No. S-1234, we found, and I accepted the Oneida County brass-capped iron pipe shown on my previous monument record. Two of the previous bearing trees are now gone - see below for updated reference ties.

(c)(d)(e) PLAN VIEW OF CORNER WITH TIES TO AT LEAST 4 WITNESS MONUMENTS. IF IN DISAGREEMENT WITH PREVIOUSLY ESTABLISHED CORNER, SHOW THE DISTANCE BETWEEN THE TWO CORNERS AND ALSO INDICATE THE TIES TO THE DISPUTED CORNER.



(i) I, JAMES D. REIN, PROFESSIONAL LAND SURVEYOR NO. S-1234 HEREBY CERTIFY THAT THE CORNER LOCATION ON THIS RECORD WAS DETERMINED BY ME OR UNDER MY DIRECTION AND CONTROL AND THAT THIS U.S. PUBLIC LAND SURVEY MONUMENT RECORD IS CORRECT AND COMPLETE TO THE BEST OF MY KNOWLEDGE AND BELIEF.



*James D. Rein*  
SIGNATURE

7/10/20  
DATE

INDEX NO. G - 21  
3608112000