

CERTIFIED LAND CORNER RESTORATION

State of Wisconsin }
County of Oneida } ss.

I, William Immich, do hereby certify that on the 20 day of Jan., 1982, I found evidence of the meander corner, Lake Julia corner of Section 12 and 13 Township 36 North, Range 8 East, Fourth Principal Meridian, as described hereon; and that from this evidence I established a new monument and accessories as described hereon to perpetuate the original location of this corner:

Description of original monument and accessories and subsequent restorations:

- 1863 William Daugherty Government Surveyor, East between 12 and 13 Var. 8°E 45.11 lake set meander post, Hem 8 S10W 81k Hem 8 N19W 13 lk
- 1946 A.J. Lytle found original M.C. Corner
- 1960 F.R. Wincentsen found A.J. Lytles corner Plat of Olsons Timber Shores calls corner iron pipe
- 1979 W. Immich found F.R. Wincentsens iron pipe

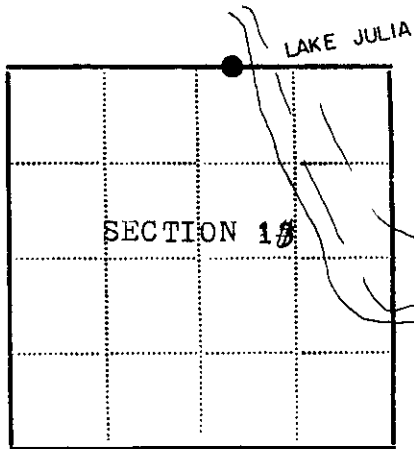
Description of corner evidence found:

Found 2" iron pipe and old bearing tree Hem 22 S25W 27.48' corner fit adjacent pipe in plat good.

Description of monument and accessories I established to perpetuate the location of this corner:

Corner in good condition did not remonument made new bearing trees triple maple 4° N30W 3.85' W.Birch 72°S22E 29.25' lake julia East 10'

bearing trees scribed and blazed, distance to p.k. in bearing mag.



● - Corner monument restored
□ -

Resident witnesses.....
Dated at Rhinelander Wisconsin, this 20 day of Jan. 1982.
Signature *William Immich* Title R.L.S.
(County Surveyor, Registered Land Surveyor, or other duly authorized official)
Surveyors Registration No. 1383

Office of Register of Deeds County of Oneida
I hereby certify that the within instrument was filed in this office for record on the 11 day of June 1986, and was filed in Book No. Page No. of County Records.

Signature *Doris Verage Kuhn* Title *Reg. of Deeds*
Deputy

Township 36 North, Range 8 East, Section 13, Index No., Page No.

3608/20018

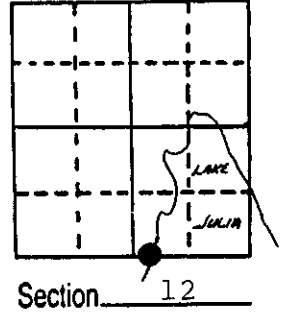
5-23

U.S. PUBLIC LAND SURVEY MONUMENT RECORD

Note: This form is intended and designed to fulfill all requirements of Wisconsin Administrative Code, Chapter A-E 5.02, U.S. Public Land Survey Monument Record (3) (a) (b) (c) (d) (e) (f) (g) (h) (i). An additional sheet may be added if necessary to conform with said requirements.

(a) Corner location: Township 36 North
 Range 8 East
 Town: Crescent
 County Oneida

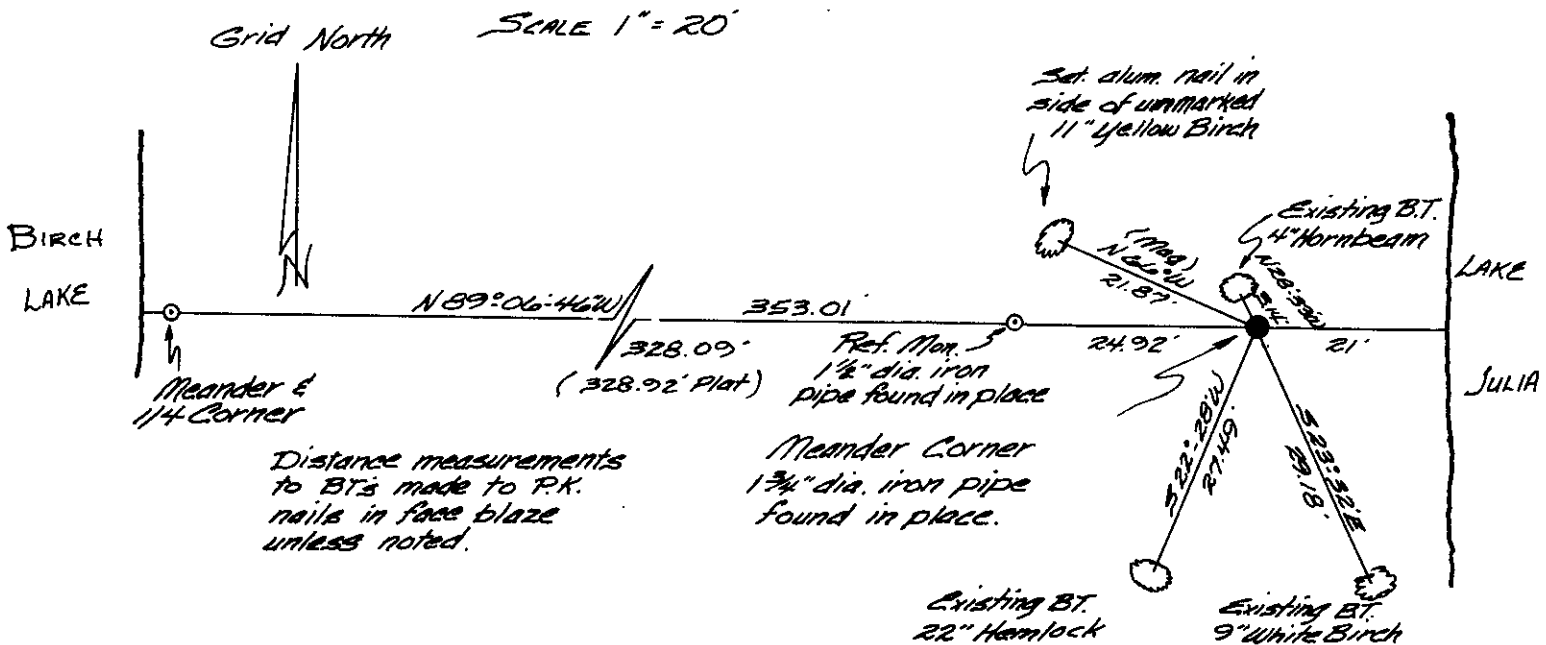
Meander Corner
 West shore of
 Lake Julia on
 South Line of
 Section 12



(b) (f) (g) (h) Description of monument found at this corner and if it was accepted, state all evidence (material, testimonial, occupational, plats, records, other monuments) used as a basis for accepting. If not accepted or if nothing was found, state evidence used as basis for establishing location. If reestablished through lost corner proportionate methods, indicate all monuments, distances and directions used to establish.

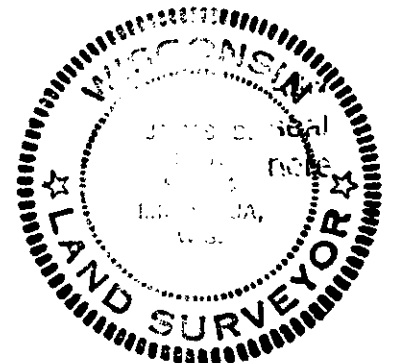
- July 1863 - William E. Daugherty, Deputy Surveyor - Set Meander post Original bearing trees; Hemlock 8 S10°W, 8 lks.; Hemlock 8 N19°W, 13 lks.
- May 1898 - B. F. Dorr, Oneida County Surveyor - Plat recorded in Vol. 2, Page 4 indicates Meander Corner in existence.
- August 5, 1960 - F. R. Wincentsen R.S. No. 155 - Plat of Olson's Timber Shores in Section 12 identifies Section line.
- August 5, 1985 - Found 1 3/4" dia. iron pipe and existing bearing trees, as shown below, in harmony with the recorded plat of Olson's Timber Shores.

(c) (d) (e) Plan view of corner with ties to at least 4 witness monuments. If in disagreement with previously established corner, show the distances between the two corners and also indicate the ties to the disputed corner.



(i) I, James D. Rein, Reg. Land Surveyor No. S-1234
 (type or print name) certify that the corner location on this record was determined by me or under my direction and control and that this U.S. Public Land Survey Monument Record is correct and complete to the best of my knowledge and belief.

James D. Rein Signature October 19, 1985 Date



Index No. J-23

3608120018