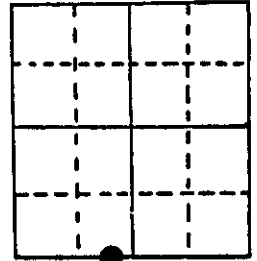


U.S. PUBLIC LAND SURVEY MONUMENT RECORD

Note: This form is intended and designed to fulfill all requirements of Wisconsin Administrative Code, Chapter A-E 5.02, U.S. Public Land Survey Monument Record (3) (a) (b) (c) (d) (e) (f) (g) (h) (i). An additional sheet may be added if necessary to conform with said requirements.

(a) Corner location: Township 36 North
 Range 8 East
 Town Crescent
 County Oneida

Meander Corner
 West shore of
 Birch Lake on
 South line of
 Section 12



Section 12

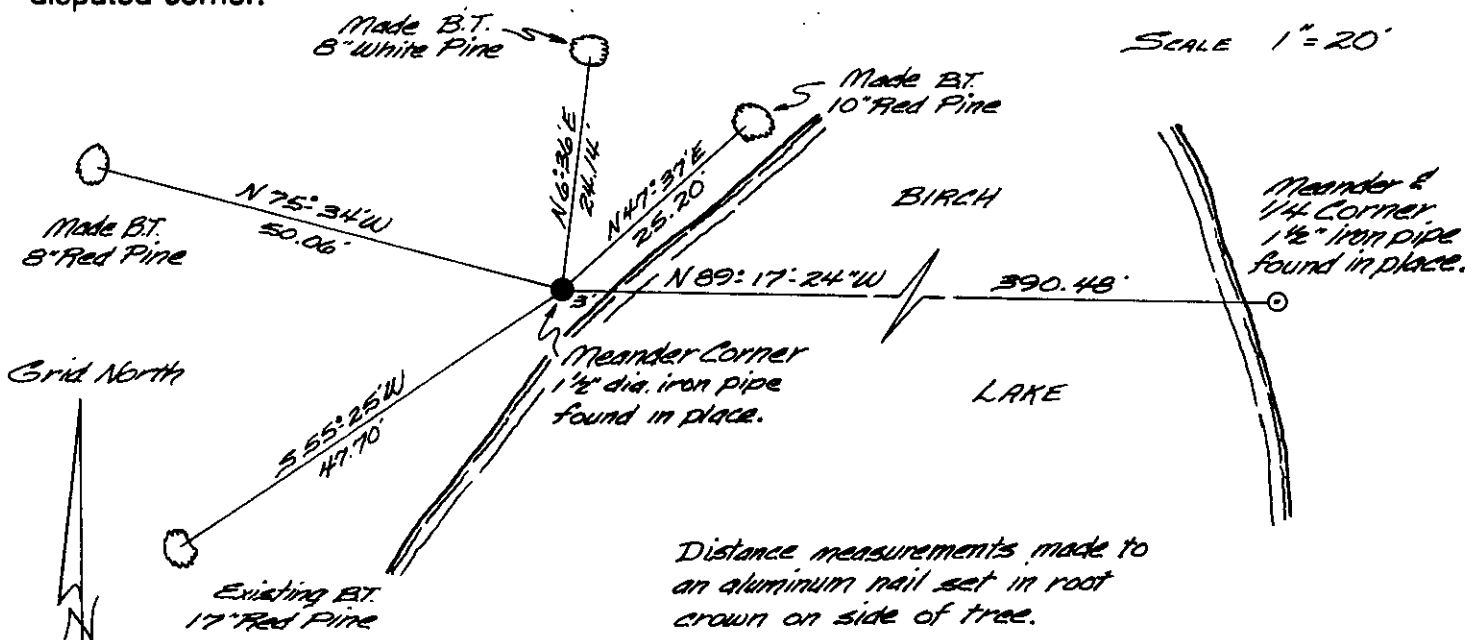
(b) (f) (g) (h) Description of monument found at this corner and if it was accepted, state all evidence (material, testimonial, occupational, plats, records, other monuments) used as a basis for accepting. If not accepted or if nothing was found, state evidence used as basis for establishing location. If reestablished through lost corner proportionate methods, indicate all monuments, distances and directions used to establish.

July 1863 - William E. Daugherty, Deputy Surveyor - Set meander post
 Original bearing trees; Aspen 10 N43°W, 8 lks.; Aspen
 8 S72°W, 20 lks.

May 1898 - B. F. Dorr, Oneida County Surveyor - Did not note corner
 in survey record.

August 14, 1985 - Found 1 1/2" dia. iron pipe with coupling extending
 18" above ground level. Existing bearing tree 17"
 Red Pine bears S55°-25'W, 47.70 feet.

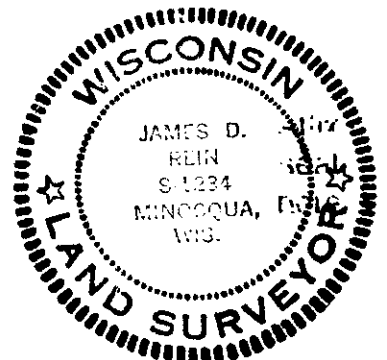
(c) (d) (e) Plan view of corner with ties to at least 4 witness monuments. If in disagreement with previously established corner, show the distances between the two corners and also indicate the ties to the disputed corner.



(i) I, James D. Rein, Reg. Land Surveyor No. S-1234
 (type or print name) certify that the corner location on this record
 was determined by me or under my direction and control and that
 this U.S. Public Land Survey Monument Record is correct and
 complete to the best of my knowledge and belief.

James D. Rein
 Signature

October 19, 1985
 Date



Index No. S-23

3608120023