

U.S. PUBLIC LAND SURVEY MONUMENT RECORD

Note: This form is intended and designed to fulfill all requirements of Wisconsin Administrative Code, Chapter A-E 5.02, U.S. Public Land Survey Monument Record (3) (a) (b) (c) (d) (e) (f) (g) (h) (i). An additional sheet may be added if necessary to conform with said requirements.

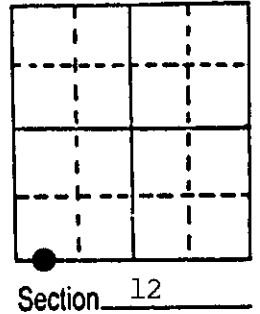
(a) Corner location: Township 36 North

Range 8 East

Town Crescent

County Oneida

Meander Corner
Left bank of
Wisconsin River
Section 12



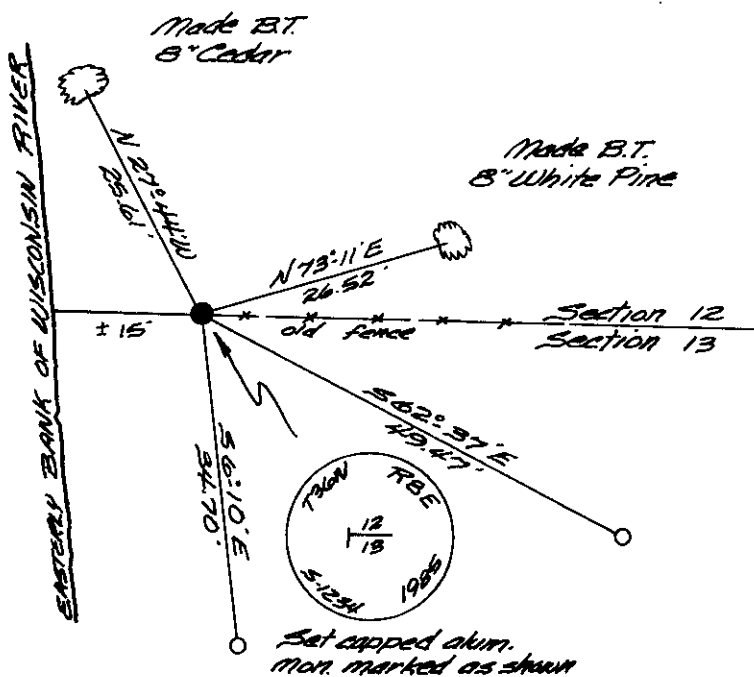
(b) (f) (g) (h) Description of monument found at this corner and if it was accepted, state all evidence (material, testimonial, occupational, plats, records, other monuments) used as a basis for accepting. If not accepted or if nothing was found, state evidence used as basis for establishing location. If reestablished through lost corner proportionate methods, indicate all monuments, distances and directions used to establish.

July, 1863 - William E. Daugherty, Deputy Surveyor - Set Meander post Original bearing trees: Birch 8" N14°E, 22 lks.; Cedar 10" S11°E, 35 lks.

May 1898 - B. F. Dorr, Oneida County Surveyor - Plat recorded in Vol. 2, Pg. 4 indicates Meander Corner in existence.

September 6, 1985 - Dorr's position for Meander Corner is now located in bed of the Wisconsin River artificially raised by Hat Rapids Dam.
I accept the remains of an old down East-West fence as the best remaining evidence of the Section line and set a capped 2" dia. x 30" long aluminum monument 15 feet from the existing river bank.

(c) (d) (e) Plan view of corner with ties to at least 4 witness monuments. If in disagreement with previously established corner, show the distances between the two corners and also indicate the ties to the disputed corner.

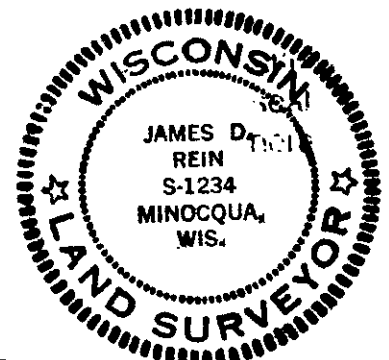


Scale 1" = 20'
O = Reference monument set, 3/4" dia. x 24" long iron pipe.
Distance measurements to B.T.'s made to an aluminum nail set in root crown on side of tree.

(i) I, James D. Rein, Reg. Land Surveyor No. S-1234
(type or print name) certify that the corner location on this record was determined by me or under my direction and control and that this U.S. Public Land Survey Monument Record is correct and complete to the best of my knowledge and belief.

James D. Rein
Signature

October 19, 1985
Date



Index No. 5-21

3608120039

MAY 16 2023

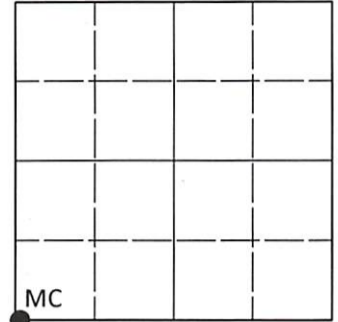
KYLE J. FRANSON
REGISTER OF DEEDS

U.S. PUBLIC LAND SURVEY MONUMENT RECORD

Note: This form is intended and designed to fulfill all requirements of Wisconsin Administrative Code, Chapter A-E 7.08 U.S. Public Land Survey Monument Record (3)(a-i).

(a) CORNER LOCATION
Meander Cor. of Secs. 12 & 13
Township 36 North
Range 8 East of the 4th P.M.
Town of Crescent
County of Oneida

WISCRS - Oneida County
N: 155,703.75 USft
E: 254,869.03 USft
Datum: NAD 83(2011) ep. 2010.00
GNSS Method: RTN - Direct
GNSS Control: WISCORS VRS



Sec. 12, T. 36 N., R. 8 E.

(b)(f)(g)(h) Description of monument found at this corner and if it was accepted, state all evidence (material, testimonial, occupational, plats, records, other monuments) used as a basis for accepting. If not accepted or if nothing was found, state evidence used as basis for establishing location. If re-established through lost corner proportionate methods, indicate all monuments, distances and directions used to establish. Indicate type of monument and sign post found or set.

This record is a perpetuation of the following land corner document(s):

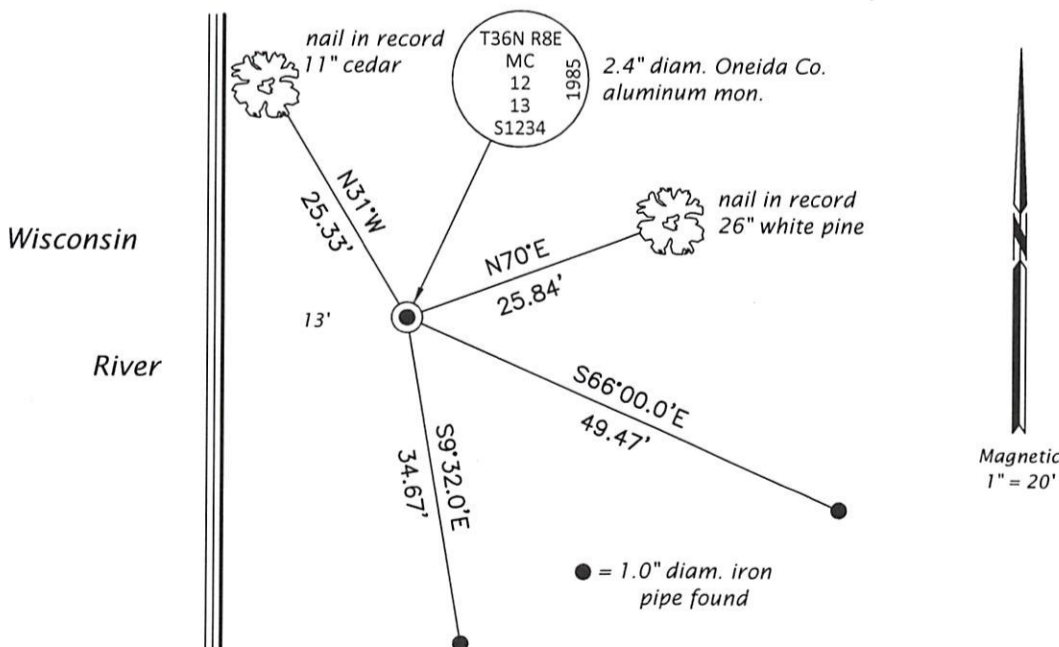
October 19, 1985: USPLS Monument Record by James D. Rein, filed in Oneida County

A complete history of the corner can be found on the previous land corner document(s). I accept the record activity as a true and faithful perpetuation or reestablishment of the original corner location and further perpetuate it as described below.

April 21, 2023: I found and accepted the record monument, a 2.4" diam. aluminum pipe, firmly set, with a 3.3" diam. Oneida Co. aluminum cap flush with the ground surface. I found or established accessories as indicated below. I set a white vinyl sign post bearing North, 1.2 ft.

The coordinate value shown is the weighted mean of two or more GNSS observations at markedly different times satisfying the accuracy requirements defined and qualified in the 2022 Oneida County Fee Schedule for USPLS Corners.

(c)(d)(e) Plan view of corner with ties to at least 4 witness monuments. If in disagreement with previously established corner, show the distances between the two corners and also indicate the ties to the disputed.



REGISTER OF DEEDS OFFICE
ONEIDA COUNTY
FILED

MAY 16 2023

KYLE J. FRANSON
REGISTER OF DEEDS

(i) I, Jeffrey W. Austin, Professional Land Surveyor No. S-1885, hereby certify that the corner location on this record was determined by me or under my direction and control and that this U.S. Public Land Survey Monument Record is correct and complete to the best of my knowledge and belief.

MAY 1, 2023

Signature

Date