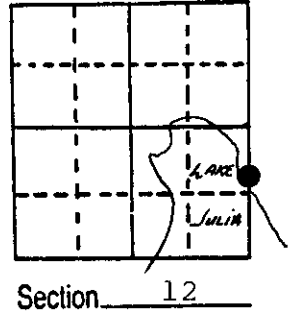


# U.S. PUBLIC LAND SURVEY MONUMENT RECORD

Note: This form is intended and designed to fulfill all requirements of Wisconsin Administrative Code, Chapter A-E 5.02, U.S. Public Land Survey Monument Record (3) (a) (b) (c) (d) (e) (f) (g) (h) (i). An additional sheet may be added if necessary to conform with said requirements.

(a) Corner location: Township 36 North  
 Range 8 East

Meander Corner  
 East Line of  
 Section 12



Town: Crescent  
 County Oneida

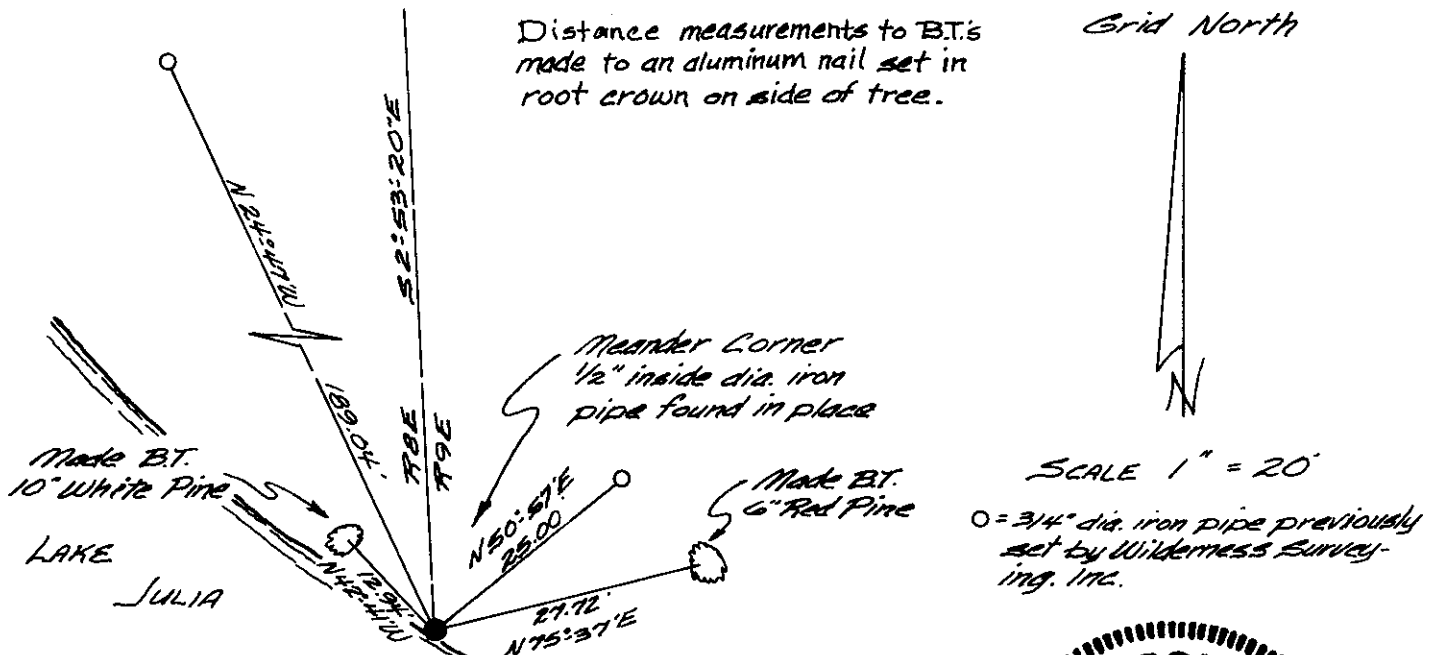
(b) (f) (g) (h) Description of monument found at this corner and if it was accepted, state all evidence (material, testimonial, occupational, plats, records, other monuments) used as a basis for accepting. If not accepted or if nothing was found, state evidence used as basis for establishing location. If reestablished through lost corner proportionate methods, indicate all monuments, distances and directions used to establish.

July 1859 - H. C. Fellows, Deputy Surveyor - Set Meander post  
 Original bearing trees: Birch 10 N24°W, 32 lks;  
 Yellow Pine 10 N34°E, 14 lks.

C. D. Vaughan - South of E.1/4 found M.C.: New Yellow Pine S88°W, 10.5 lks.

August 6, 1985 - Found 1/2" dia. iron pipe extending 6" above ground level and 5 feet from shore of Lake Julia.

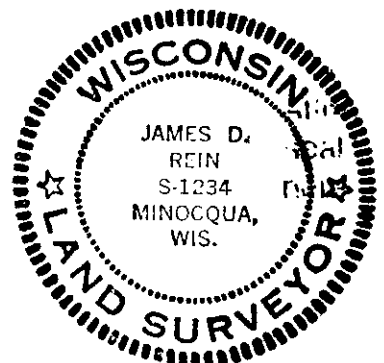
(c) (d) (e) Plan view of corner with ties to at least 4 witness monuments. If in disagreement with previously established corner, show the distances between the two corners and also indicate the ties to the disputed corner.



(i) I, James D. Rein, Reg. Land Surveyor No. S-1234  
 (type or print name) certify that the corner location on this record was determined by me or under my direction and control and that this U.S. Public Land Survey Monument Record is correct and complete to the best of my knowledge and belief.

James D. Rein  
 Signature

October 19, 1985  
 Date



Index No. 11-25

3608121200