



CERTIFIED LAND CORNER RESTORATION

State of Wisconsin }
County of Oneida } ss.

I William Immich, do hereby certify that on the 12 day of Dec., 1981, I found evidence of the Northeast corner of Section 24 Township 36 North, Range 8 East, Fourth Principal Meridian, as described hereon; and that from this evidence I established a new monument and accessories as described hereon to perpetuate the original location of this corner:

Description of original monument and accessories and subsequent restorations:

Hiram C. Fellows Government Surveyor 1859

80.00 set post to Sections 13,18,19,& 24 Aspen 9 S 30 W 24 lk/
Tam 10 N 66 W 36 lk. / Birch 9 N 64 E 46 lk. / Aspen 9 S 81 E 37 lk.
36 10 north to lake

1894 B.F. Dorr at corner shows distance to Section corner to East 83.07ch.
1915 D.H. Vaughn set 2" x 36" iron pipe at corner, set 1 1/2 x 36" I.P. E - W

Description of corner evidence found: of corner.

1945 F.R. Wincentsen ran North from corner

1946 Lytle shows corner on subdivison map in Sec. 13 - 36 - 8
shows distance to 1/4 corner west 2376

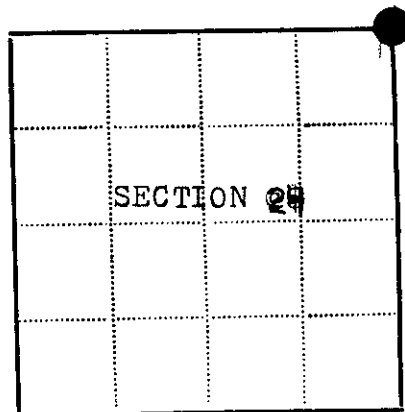
1979 W. Immich found 2" iron pipe, subdivided Section 13 fit Lytles
distances good S.E. corner to S 1/4 Section 13 2377.62'
Found Vaughn's witness pipe to east

Description of monument and accessories I established to perpetuate the location of this corner:

Found 2" iron pipe in place in good condition did not remonument, corner falls in West track of road, fence line runs east from corner, witnessed corner to the following:

- 1 1/2" iron pipe N 86 E 25.57' (Vaughn's pipe)
- P.P. p.k. in west side N 2 E 23.82'
- Spruce 4" S 15 W 27.07'
- Spruce 4" N 72 W 46.60'
- N.E. cor. log chain block foundation S 32 W 81.30'

bearings mag. / distances to p.k. in blaze



● - Corner monument restored
□ -

Resident witnesses.....

Dated at Rhinelander Wisconsin, this 12th day of Dec. 19 81.

Signature *William Immich* Title R.L.S.
(County Surveyor, Registered Land Surveyor, or other duly authorized official)

Surveyors Registration No. 1383

Office of REGISTER OF DEEDS County of Oneida

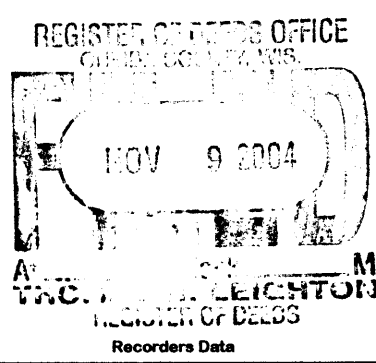
I hereby certify that the within instrument was filed in this office for record on the 17th day of September 1982, and was filed in Book No. Page No. of County Records.

Signature *Doris Verage Kuehn* Title REGISTER OF DEEDS

Township....., Range....., Section....., Index No....., Page No.....

3608130000

N-25



This form is intended to fulfill the requirements of Chapter A-E7.08 (3)(a) thru (i) U.S. Public Land Survey Monument Location Record, Wisconsin Administrative Code. Use the reverse side of form for continuation.

U.S. PUBLIC LAND SURVEY MONUMENT LOCATION RECORD

USPLS CORNER: NW CORNER SECTION: 19 TOWNSHIP: 36 NORTH RANGE: 9 EAST
 NAME OF WATERWAY FOR M.C. CORNER: N/A SECTION LINE: N/A
 (OFF) (VILLAGE) (TOWN) OF: PELICAN COUNTY OF: ONEIDA

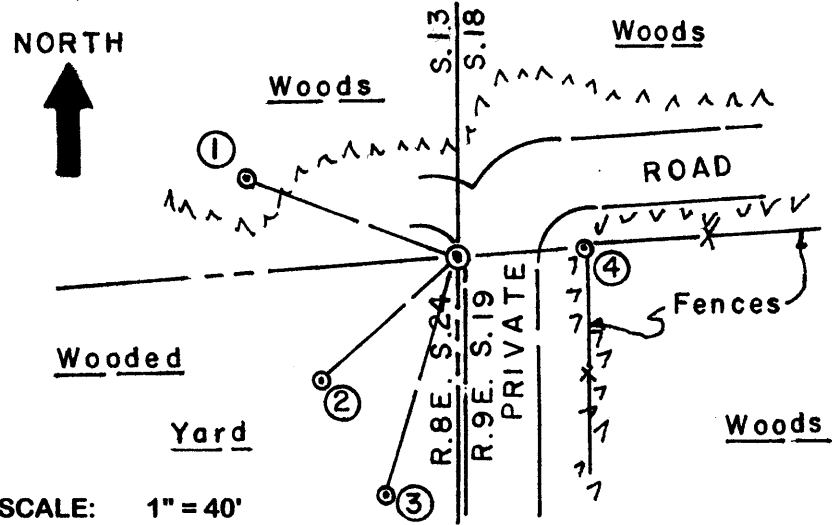
Description of monument found or placed and all other evidence used as the basis for monument location; including monuments and measurements required if the corner location was reestablished by lost corner proportionate methods. Also indicate name of the original surveyor, original survey date and the corner monument, bearing trees, witness or other reference monuments established, including measured bearing and distance ties, from available survey records.

THIS CORNER REREFERENCED WITH APPROVAL OF ONEIDA COUNTY SURVEYOR DUE TO INADEQUATE REMAINING TIES AND EVIDENCE OF RECORD MONUMENT DISTURBANCE. See Certified Land Corner Restoration record filed by William G. Immich/RLS 1383 on September 17, 1982 in Oneida County records for previous history and location data.

I found uncapped top of record 2" dia. iron pipe flush at this corner but upon excavation to remove for placement of a new monument I found the upper part of old iron pipe bent to the North about 30°, undoubtedly by previous roadway grading or plowing. I carefully removed the old iron pipe which revealed the original plumb soil cavity for the lower part of the pipe below grade, into which I drove a standard 2" dia. by 30" long aluminum pipe monument with stamped Oneida County cap 6" below grade to deter any future disturbance. Corner falls 10" +/- West of North/South center of gravelled private road.

Older 1.5" dia. iron pipe noted to be by Vaughan N86°E 25.57' per Immich found as very loose 2" iron pipe 6" West of old wood corner post for fences East and South, which I redrove to secure 10" above grade for new ties below. PK noted by Immich in West side of power pole N02°E 23.82' was undoubtedly measured to the top of old bent 2" iron pipe as PK now at N07°E 24.56' from new monument set; the pole also appears to be tipped or likely reset since 1982 so reference is considered unreliable. The 4" Spruce BT noted by Immich at S15°W 27.07' is now a 2' high sawed stump. The 4" Spruce noted by Immich N72°W 46.60' found OK and used for new ties below. The NE corner of block foundation noted by Immich S32°W 81.30' is now inaccessible due to large Pr intervening on line thereto. This recovery completed September 22, 2004; there were no direct witnesses.

Plan view map of monument location with bearing and distance ties to a minimum of four(4) described witness or reference monuments of concrete, natural stone, iron, live bearing trees or equivalent material. If applicable, also show a minimum of two(2) bearing and distance ties to any other monument found and not accepted; including the bearing and distance from the accepted monument.

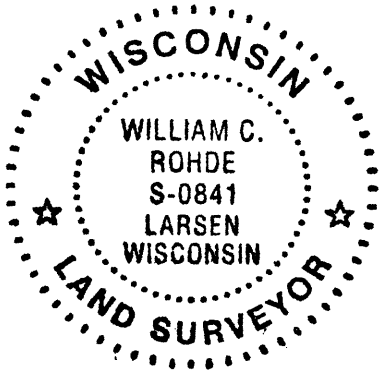


- WITNESS MONUMENT TIES:**
- ① Older 6.5" Spruce BT with upper blaze shut and lower blaze nearly shut N69°W 46.56'.
 - ② New 9" Spruce BT S47°W 38.28'.
 - ③ New 17" Or BT S17°W 52.36'.
 - ④ Old 2" dia. record iron pipe N86°E 25.76'.
- I set a standard white poly 'T' marker post on SW side of old wood fence corner post East of corner.

SCALE: 1" = 40'

Unless otherwise indicated, all bearing tree ties are to a .25" dia. by 2.5" long PK nail with a 1.25" dia. steel washer driven into unblazed right face and a .25" dia. by 2.5" long PK nail with a 2" dia. steel washer stamped BT is also driven into unblazed face of bearing tree at DBH; the basis for measured bearings is by compass to nearest degree and all tie distances are measured horizontal by steel tape corrected to nearest 1/100th feet at standard temperature of 68° F.

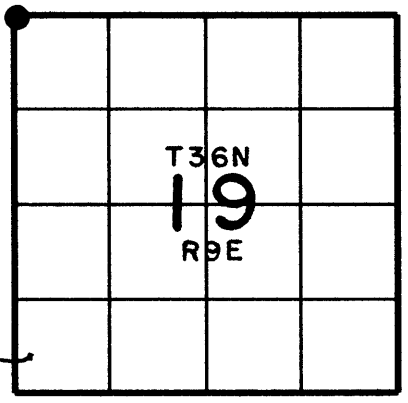
RLS SEAL:



LAND SURVEYOR CERTIFICATE:

I, William C. Rohde, hereby certify that I am duly licensed as a Professional Land Surveyor in the State of Wisconsin; that this USPLS monument location was determined by me and/or under my direct supervision and control; and that this U.S. Public Land Survey Monument Location Record is true and correct to the best of my knowledge and belief.

Signed William C. Rohde
 William C. Rohde RLS 841



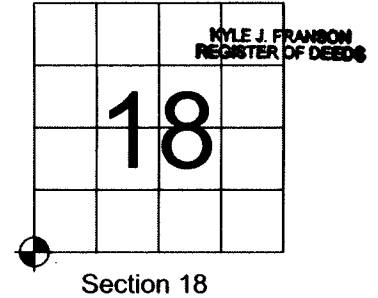
U.S. PUBLIC LAND SURVEY MONUMENT RECORD

Note: This form is intended to fulfill all requirements of Wisconsin Administrative Code, Chapter A-E 7.08 U.S. Public Land Survey Monument Record (3)(a)(b)(c)(d)(e)(f)(g)(h)(i). An additional sheet may be added to if necessary to conform with said requirements.

REGISTER OF DEEDS OFFICE
ONEIDA COUNTY
FILED

SEP 06 2018

(a) Corner Location: June 29, 2018 Observation - MSA
 Southwest Corner Oneida County Aluminum Monument
 Section 18, N 150979.707
 Township 36 North, E 259452.071
 Range 9 East, Oneida County Coordinate System NAD83(2011)
 Town of Pelican
 Oneida County, Wisconsin
 October, 1997 Observation - Aero-Metric
 2" Iron Pipe
 N 150980.41
 E 259452.31
 Oneida County Coordinate System NAD83(91)



(b)(f)(g)(h) Description of monument found at this corner and if it was accepted, state all evidence (material, testimonial, occupational, plats, records, other monuments) used as a basis for accepting. If not accepted or if nothing was found, state evidence used as basis for establishing location. If reestablishment through lost corner proportionate methods, indicate all monuments, distances and directions used to establish. Indicate type of monument found or set and sign post.

1859 - Hiram C. Fellows set post: Aspen 9 S30W 24 lk., Tam 10 N66W 36 lk., Birch 9 N64E 46 lk., Aspen 9 S81E 37 lk
 1894 - B.F. Dorr at corner shows distance to section corner to the east 83.07 ch.
 1915 - D.H. Vaughn set 2" X 36" Iron Pipe at corner, set 1 1/2" X 36" I.P. E-W of Corner
 1945 - F.R. Winconsen ran north from corner
 1946 - Lytle shows corner on subdivision map in Sect. 13-36-8, shows distance to 1/4 cornerwest 2376
 April 1975, Genisot and Associates, Inc. note "PIPE IN PLACE" at corner location. (Oneida County Map #B607)
 1979 - William Immich found 2: Iron Pipe, and Vaughn's witness pipe to the east.
 September 1982, William G. Immich Certified Land Corner Restoration found 2" Iron Pipe and states "corner falls in west track of road, fence line runs east". Witnesses corner to the following: 1 1/2" Iron Pipe N86E 25.57', P.P.p.k. in west side N2E 23.82', Spruce 4" S15W 27.07', Spruce 4" N72W 46.60', N.E. cor. log chain block foundation S32W 81.30'
 March 2002, Charles Oleinik found a 2" Iron Pipe at corner location (Oneida County Map #C1877)
 November 2004 Russell F. Brown found a 2 1/4" Iron Pipe at corner location (Oneida County Map #C2111)
 October 2004, See William C. Rohde found uncapped top of 2" iron pipe bent, and replaced with 2"x30" long aluminum pipe with a stamped Oneida County cap 6" below grade.
 June 2008, Mathew E. Hogle found and accepted 3" Oneida County Capped Monument (Oneida County Map #A2167)
 July 2009, Charles Oleinik found a 2" Iron Pipe at corner location (Oneida County Certified Survey Map No. 003722)
 January 2018, Chad A. Besaw finds a 60D spike at the corner location, and verified position with plat of survey A2167A completed in 2008. Local testimony reports corner and iron ties were destroyed during construction. Besaw shows the corner on Oneida County Map #A3360 as "Found and verified Gov't Corner as noted see USPLS Monument record" Notation indicates 60d nail to be re-set in spring.

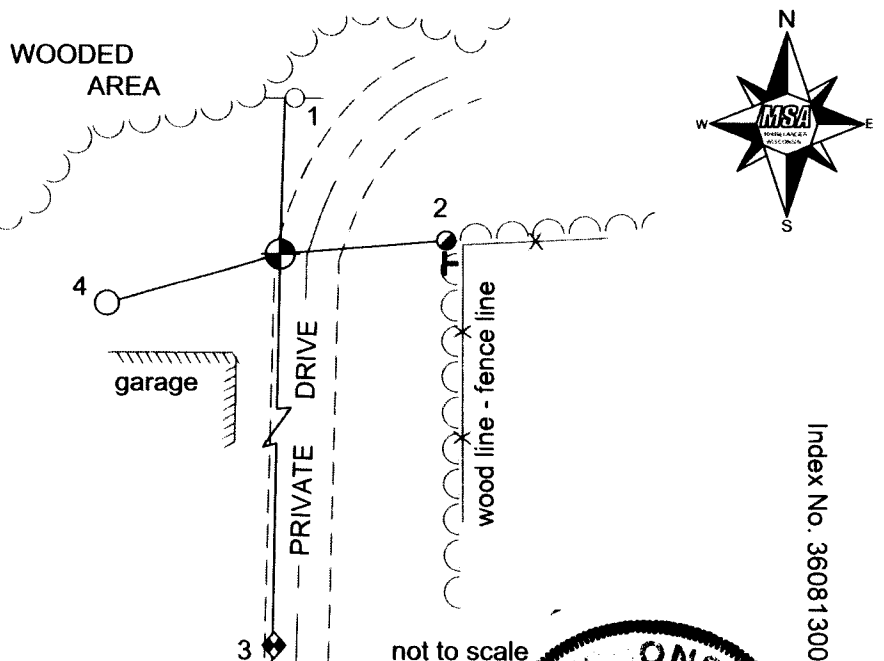
June 29, 2018 - In the process of re-setting the corner for Chad Besaw, I found a 2" diameter Oneida County aluminum monument ±18" below surface grade and accepted it as the corner location and further perpetuated as shown below.

If this corner ever needs to be re-established, I have a 2" diameter X 30" long Oneida County Aluminum monument stamped and ready to place.

(c)(d)(e) Plan view of corner with ties to at least 4 witness monuments. If in disagreement with previously established corner, show the distances between the two corners and also indicate the ties to the disputed corner.

- EXISTING ONEIDA COUNTY ALUMINUM MONUMENT
- SET 7/8" x 30" IRON ROD WITH YELLOW MSA CAP
- EXISTING POWER POLE
- EXISTING 2" DIAMETER IRON PIPE
- EXISTING SURVEY MARKER POST
- EXISTING 1-1/4" DIAMETER IRON PIPE

Witness Table			
Point #	Description	Bearing	Distance
1 EX.	FOUND P.K. NAIL IN WEST SIDE OF POWER POLE	N05°E (N02°E)	24.50' (23.82')
2 EX.	FOUND 2" DIA IRON PIPE	N85°E (N86°E)	25.97' (25.76')
3 NEW	FOUND 1-1/4" DIA. IRON PIPE FROM O.C. SURVEY MAP #A2137A	S01°W	138.09' (138.04')
4 NEW	SET 7/8" DIA. X 30" LONG IRON REBAR WITH YELLOW MSA CAP	S74°W	28.16'



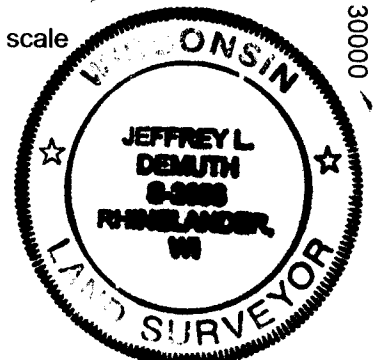
Index No. 3608130000

(i) I, Jeffrey L. DeMuth, Professional Land Surveyor S-2656, hereby certify that the corner location on this record was determined by me or under my direction and control and that this U.S. Public Land Survey Monument Record is correct and complete to the best of my knowledge and belief.

Signature

Date

05/13/2018



2-1