

CERTIFIED LAND CORNER RESTORATION

State of Wisconsin }
County of Oneida } ss.

I William Immich, do hereby certify that on the 12th day of Dec., 1981, I found evidence of the North 1/4 corner of Section 24 Township 36 North, Range 8 East, Fourth Principal Meridian, as described hereon; and that from this evidence I established a new monument and accessories as described hereon to perpetuate the original location of this corner:

Description of original monument and accessories and subsequent restorations:

William Daugherty 1863 ran East between 13 & 24 40.12 set post Birch 10 S 83 W 36 lk / Ash 15 N 72 E 13 lk

1894 B.F. Dorr at corner

1906 B.F. Dorr at corner

1946 A. J. Lytle tied subdivision to corner, shows distance to S.E. corner Section 13-36-8 2376'

1945 F. R. Wincontsen ran from S.W. cor Sec. 13 to S 1/4 cor. 40.10 1/2 ch.

1959 N. Loftus found corner set witness pipe 50 lk. south of corner

Description of corner evidence found:

1979 W. Immich reset corner from Loftus witness pipe set 2" iron pipe

1980 W. Bandow found 2" iron pipe

1981 J.F. Kassen found 2" iron pipe

Description of monument and accessories I established to perpetuate the location of this corner:

found my 2" iron pipe in place, distance to S.E. corner 2377.62' fit Lyttles distance good, corner in good condition did not remonument witnessed to the following:

1" capped iron pipe 33.00' South

Power Pole # 3608-24E1 p.k. in east side S 14 W 12.47'

Power Pole # 1481 spk. in S.W. side N 40 W 156.62'

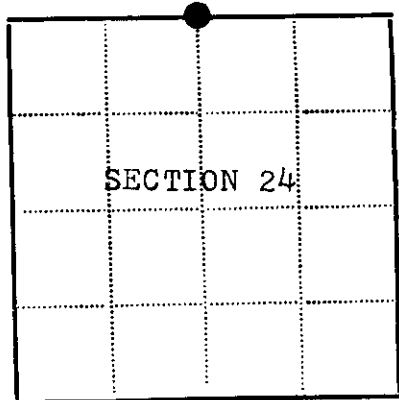
cedar 6" N 47 E 149.55'

alder 7" S 45 W 49.05' (old b.t.)

alder 4" S 74 E 54.60" (old b.t.)

corner falls in South shoulder of Boyce Drive

bearings mag. distance to new b.t. p.k. in face of blaze, old b.t. face of blaze



Resident witnesses.....

Dated at Rhinelander Wisconsin, this 12 day of Dec., 1981

Signature [Handwritten Signature] Title R.L.S. (County Surveyor, Registered Land Surveyor, or other duly authorized official)

Surveyors Registration No. 1383

Office of REGISTER OF DEEDS County of Oneida

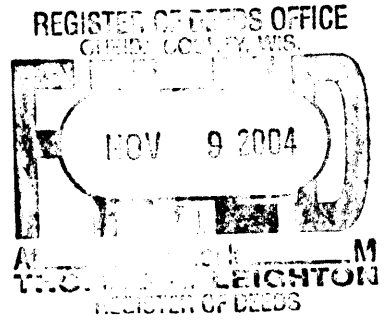
I hereby certify that the within instrument was filed in this office for record on the 17th day of September 1982, and was filed in Book No. Page No. of County Records.

Signature [Handwritten Signature] Title REGISTER OF DEEDS

Township....., Range....., Section....., Index No....., Page No.....

3608130020

N. 23



This form is intended to fulfill the requirements of Chapter A-E7.08 (3)(a) thru (i) U.S. Public Land Survey Monument Location Record, Wisconsin Administrative Code. Use the reverse side of form for continuation.

**U.S. PUBLIC LAND SURVEY MONUMENT LOCATION RECORD**

Recorders Data

USPLS CORNER: NORTH 1/4 SECTION: 24 TOWNSHIP: 36 NORTH RANGE: 8 EAST  
 NAME OF WATERWAY FOR M.C. CORNER : N/A SECTION LINE: N/A  
 (CITY)(VILLAGE)(TOWN) OF: CRESCENT COUNTY OF: ONEIDA

Description of monument found or placed and all other evidence used as the basis for monument location; including monuments and measurements required if the corner location was reestablished by lost corner proportionate methods. Also indicate name of the original surveyor, original survey date and the corner monument, bearing trees, witness or other reference monuments established, including measured bearing and distance ties, from available survey records.

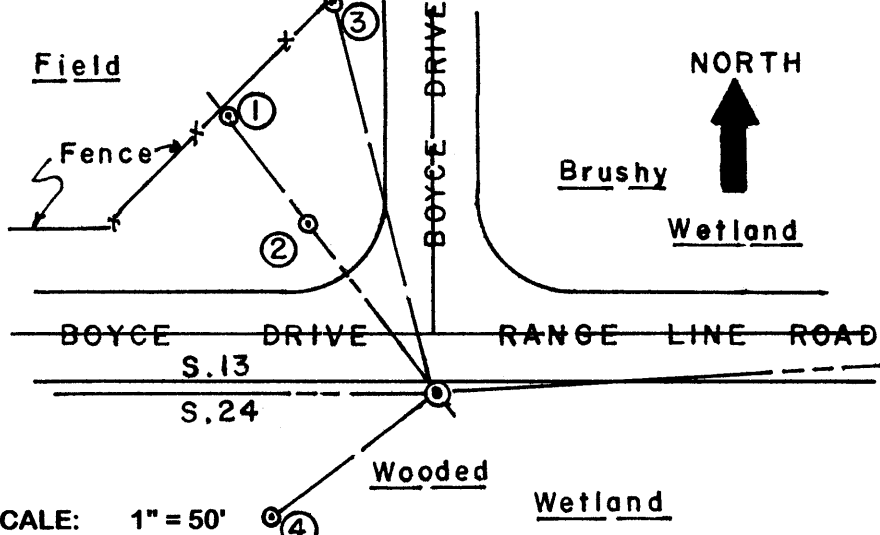
THIS CORNER REREFERENCED WITH APPROVAL OF ONEIDA COUNTY SURVEYOR DUE TO INADEQUATE REMAINING TIES. See Certified Land Corner Restoration record filed by William Immich/RLS 1383 on September 17, 1982 for previous history and location data.

Found and accepted an older 1" dia. iron pipe monument with red poly Permamark cap 4" below grade of South gravelled shoulder and 2.9' South of the South edge of East/West/North blacktop roadways. I left the iron pipe in place and drove a standard 2" dia. by 30" long aluminum pipe monument with stamped Oneida County cap over it to 5" below grade of road shoulder. I could find no evidence of 2" dia. iron pipe at corner per Immich; likely destroyed by roadway work since.

The 1" capped iron pipe 33.00' South per Immich found as a very loose and tipped 1.5" dia. capped iron pipe in boggy wetland, which upon replumbing checked OK to iron pipe found at corner.; PK in East side of power pole S14°W 12.47' per Immich checked OK to iron pipe at corner; 6" Cedar N47°E 149.55' per Immich is inaccessible due to very thick brushy wetland conditions; 7" Alder S45°W 49.05' per Immich found OK with upper blaze shut and lower blaze open; 4" Alder S74°E 54.60' per Immich not found. I did not check for PK in power pole N40°W 156.62' per Immich as such reference is considered unreliable from my previous experience with utility poles at distances beyond a 100' tape length.

This recovery completed September 22, 2004 and directly witnessed by NW adjoiner owner Chester Moore.

Plan view map of monument location with bearing and distance ties to a minimum of four(4) described witness or reference monuments of concrete, natural stone, iron, live bearing trees or equivalent material. If applicable, also show a minimum of two(2) bearing and distance ties to any other monument found and not accepted; including the bearing and distance from the accepted monument.



**WITNESS MONUMENT TIES:**

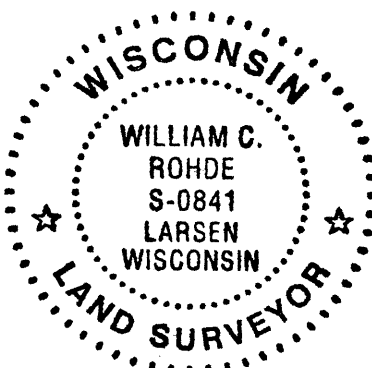
- ① 5/8" dia. by 24" long rebar set with yellow poly RM cap 3" up N37°W 90.78' at fence line S40°W/N40°E.
- ② 5/8" dia. by 24" long rebar set with yellow poly RM cap 1" up N37°W 54.93'.
- ③ 5/8" dia. by 24" long rebar set with yellow poly RM cap 1" up N15°W 109.75'; at corner of fences North and S40°W.
- ④ New 12" Alder BT S53°W 53.58'.

Standard white poly 'T' marker post set 46" South of new corner monument.

SCALE: 1" = 50'

Unless otherwise indicated, all bearing tree ties are to a .25" dia. by 2.5" long PK nail with a 1.25" dia. steel washer driven into unblazed right face and a .25" dia. by 2.5" long PK nail with a 2" dia. steel washer stamped BT is also driven into unblazed face of bearing tree at DBH; the basis for measured bearings is by compass to nearest degree and all tie distances are measured horizontal by steel tape corrected to nearest 1/100th feet at standard temperature of 68° F.

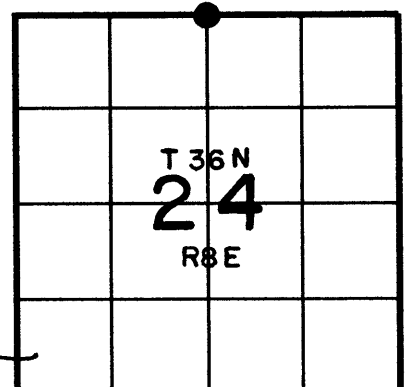
RLS SEAL:



LAND SURVEYOR CERTIFICATE:

I, William C. Rohde, hereby certify that I am duly licensed as a Professional Land Surveyor in the State of Wisconsin; that this USPLS monument location was determined by me and/or under my direct supervision and control; and that this U.S. Public Land Survey Monument Location Record is true and correct to the best of my knowledge and belief.

Signed: *William C. Rohde*  
 William C. Rohde RLS 841



SECTION LOCATION MAP

INDEX NO. N 23

3608130020

SHEET 1 OF 1

FORM REVISED: 03/15/03

Date Signed: October 31, 2004