

# U. S. PUBLIC LAND SURVEY MONUMENT RECORD

**INSTRUCTIONS:** This record shall show the location of the corner and shall include all of the following nine elements (a through i).

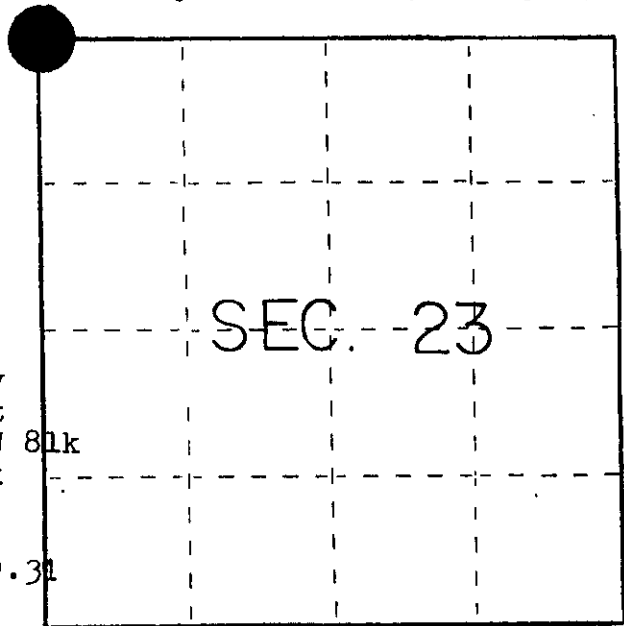
(a) Identify the corner by reference to the U.S. public land survey system.

○ = Corner monument restored.

SECTION CORNER COMMON TO  
SECTIONS 14,15,22 and 23  
Township 36 North, Range 8 East  
Fourth Principal Meridian  
Oneida County, Wisconsin

1863 Government Survey W. Daugherty  
North bet 22 and 23, 80.00 set post  
to Sec 14,15,22&23 Birch 10 N 51 W 81k  
He. 8 S38E 121k

1905 D.H. Vaughn ran from M.C. bet  
14 and 23 West in 2 feet of snow 39.31  
chains.



Only surveys of record.

(b) Describe any record evidence, monument evidence, occupational evidence, testimonial evidence or any other material evidence you considered, and whether the monument was found or placed.

Found 4" x 4" square wood post (best available evidence of corner)  
origin of post unknown  
Found bearing tree scribed White pine 19" N 2° 30' W 33.73 feet  
origin of bearing tree unknown

Set aluminum capped Oneida County Monument stamped as shown

(c) In the plan view drawing below, provide reference ties to at least 4 witness monuments, or, if the location is within a municipality, to at least 2 witness monuments. (Witness monuments shall be made of concrete, natural stone, iron or other equally durable material.)  
Describe witness monuments.

(d) Show a plan view drawing depicting the relevant monuments and reference ties which is sufficient in detail to enable accurate relocation of the corner monument if the corner monument is disturbed. Indicate north.

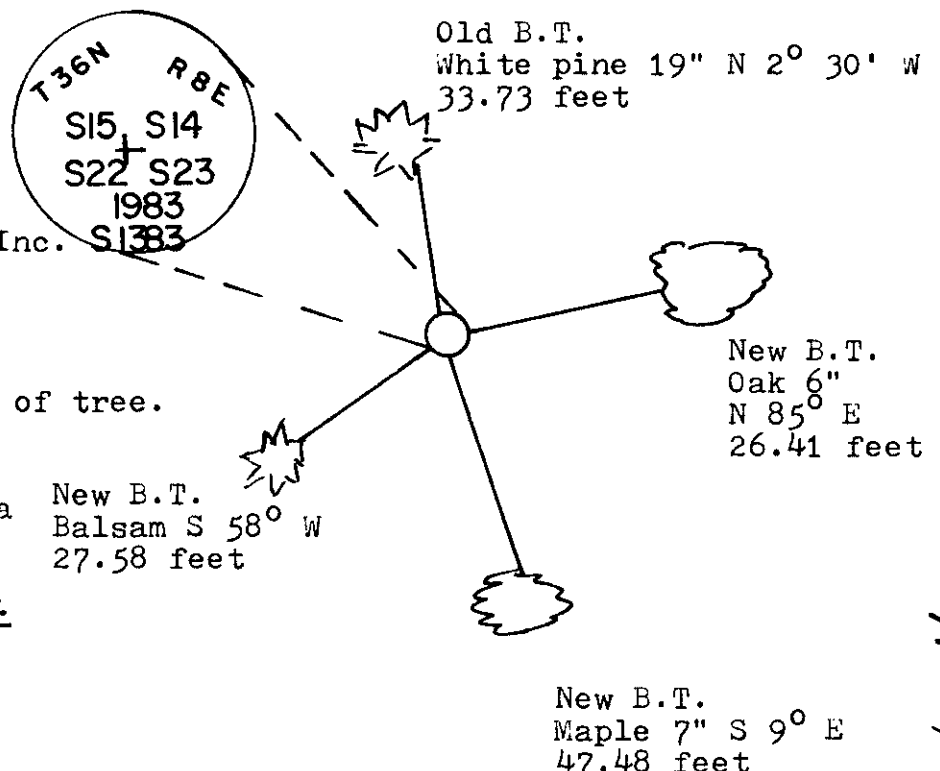
See Genisot and Associate Inc.  
Map No. 7446

Bearings mag.

Distances to spike in side of tree.

Compared with all record data  
and accepted as correct.

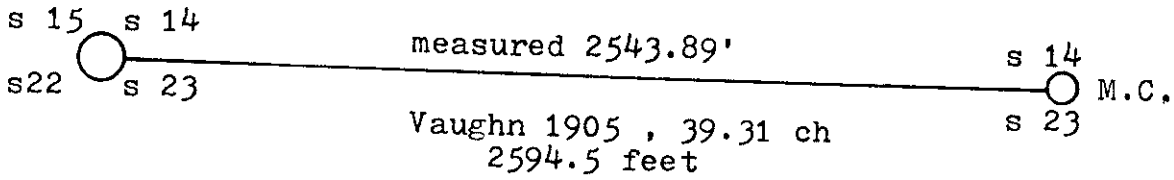
*Robert H. Wenzel* 18 JAN 84  
Oneida County Surveyor date



3608150000

N-17

(e) Describe any material discrepancy between the location of the corner as restored or reestablished and the location of that corner as previously restored or reestablished by distance and direction. Show the discrepancy on the plan view drawing under (d), above. Show the distances between the corner as previously restored or reestablished and (1) the corner as restored or reestablished, and (2) to at least 2 of the witness monuments shown on the drawing in (d), above.



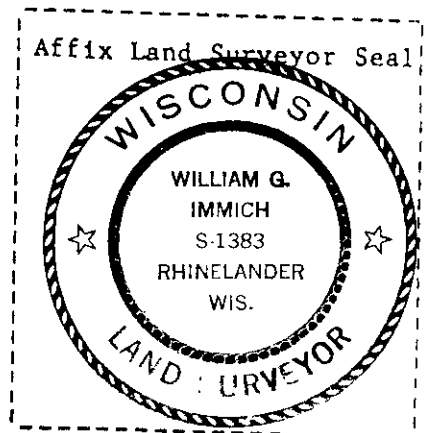
(f) Was the corner restored through acceptance of (1) an obliterated evidence location, or, (2) a found perpetuated location?

A found perpetuated location

(g&h) Was the corner reestablished through lost corner proportionate methods? If so, show the method, including the directions and distances to other public land survey corners used as evidence or used for proportioning in determining the corner location?

no

REGISTERS OFFICE }  
 Oneida County, Wis. }  
 Received for Record the 18<sup>th</sup> day of  
January A.D. 1984 at  
10<sup>00</sup> o'clock A M. and recorded in  
 Vol. \_\_\_\_\_ on page \_\_\_\_\_  
Doris Verage Kuehn  
 Register



(1) I, William Immich  
 (type or print name) certify that the corner location shown  
 on this record was determined by me or under my direction and  
 control and that this U.S. Public Land Survey Monument Record is  
 correct and complete to the best of my knowledge and belief.

William Immich  
 Signature

Oct 18, 1983  
 Date

# U.S. PUBLIC LAND SURVEY MONUMENT RECORD

REGISTER OF DEEDS OFFICE  
ONEIDA COUNTY  
FILED

OCT 20 2022

KYLE J. FRANSON  
REGISTER OF DEEDS

Note: This form is intended and designed to fulfill all requirements of the Wisconsin Administrative Code, Chapter A-E 7.08 U.S. Public Land Monument Record (3)(a)(b)(c)(d)(e)(f)(g)(h)(i). An additional sheet may be added if necessary to conform with said requirements.

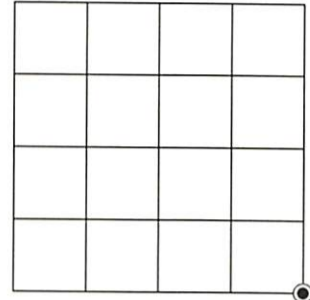
(a) CORNER LOCATION:

Southeast Corner of Section 15  
Township 36 North  
Range 8 East  
Town of Crescent  
County of Oneida

North:  
East:  
Datum:  
GNSS Method:  
GNSS Control:

(RECORDING AREA)

SECTION 15



(b) HISTORY OF ORIGINAL CORNER ESTABLISHMENT

Original Surveyor:  
Date of Survey: Commenced  
Completed  
Original B.T.'S

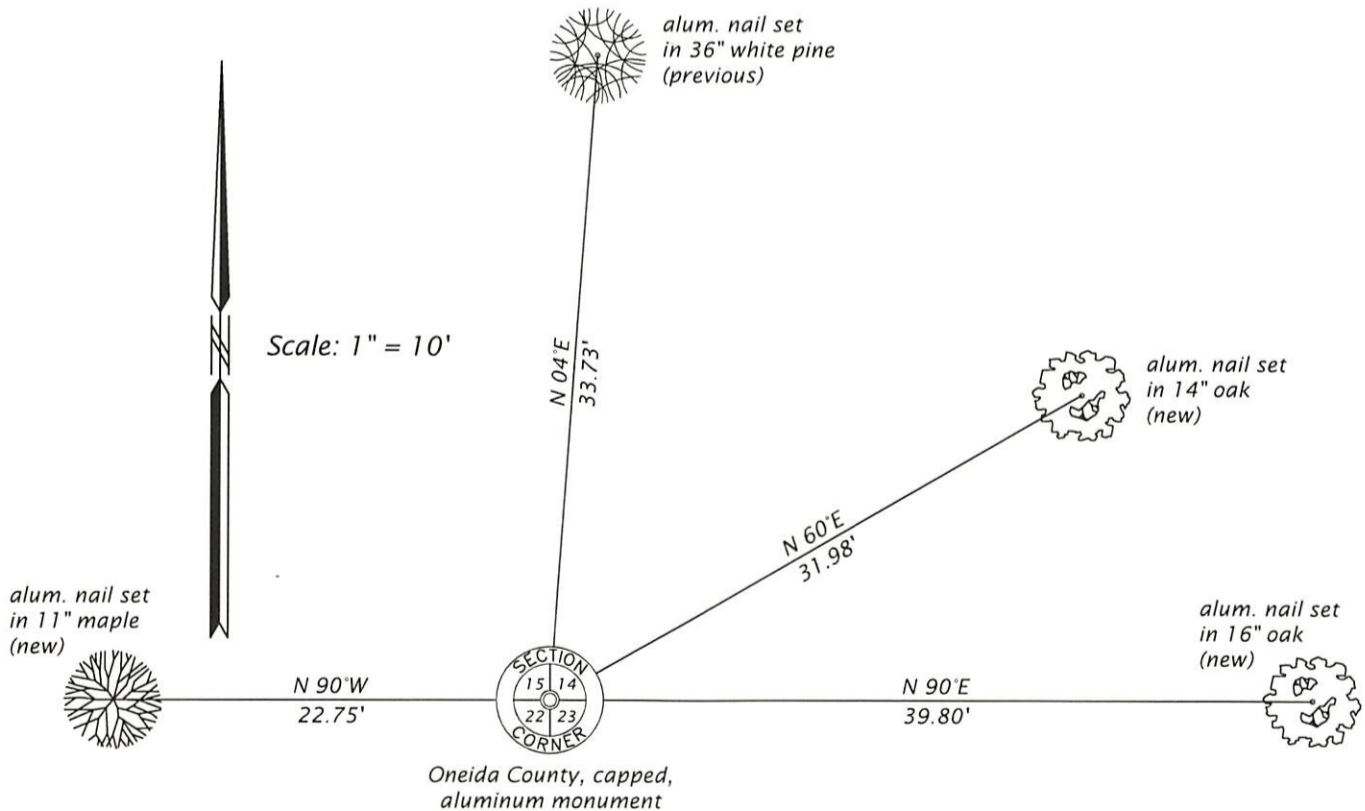
SEE PREVIOUS U.S.P.L.S. MONUMENT  
RECORD DATED OCTOBER 18, 1983

(f)(g)(h) DESCRIPTION OF MONUMENT FOUND AT THIS CORNER AND IF IT WAS ACCEPTED, STATE ALL EVIDENCE (MATERIAL, TESTIMONIAL, OCCUPATIONAL, PLATS, RECORD, OTHER MONUMENTS) USED AS A BASIS FOR ESTABLISHING LOCATION. IF NOT ACCEPTED OR IF NOTHING WAS FOUND, STATE EVIDENCE USED AS BASIS FOR ESTABLISHING LOCATION. IF REESTABLISHED THROUGH LOST CORNER PROPORTIONATE METHODS, INDICATE ALL MONUMENTS, DISTANCES AND DIRECTIONS USED TO ESTABLISH. INDICATE TYPE OF MONUMENT AND SIGN POST FOUND OR SET.

This is a perpetuation of a previous U.S.P.L.S. Monument Record by William Immich, RLS, dated October 18, 1983, and filed in the office of the Oneida County Register of Deeds. A complete history of the corner can be found on the previous monument record. I accept the previous location as a true and faithful perpetuation or reestablishment of the original corner location and further perpetuate it as follows.

May 2, 2022 - James D Rein, P.L.S. No. 1234. We found, and I accepted, the Oneida County, capped, aluminum monument set by Immich in 1983. All previous bearing trees, except for the white pine, are now gone. See below for updated references.

(c)(d)(e) PLAN VIEW OF CORNER WITH TIES TO AT LEAST 4 WITNESS MONUMENTS. IF IN DISAGREEMENT WITH PREVIOUSLY ESTABLISHED CORNER, SHOW THE DISTANCE BETWEEN THE TWO CORNERS AND ALSO INDICATE THE TIES TO THE DISPUTED CORNER.



(i) I, JAMES D. REIN, PROFESSIONAL LAND SURVEYOR NO. S-1234 HEREBY CERTIFY THAT THE CORNER LOCATION ON THIS RECORD WAS DETERMINED BY ME OR UNDER MY DIRECTION AND CONTROL AND THAT THIS U.S. PUBLIC LAND SURVEY MONUMENT RECORD IS CORRECT AND COMPLETE TO THE BEST OF MY KNOWLEDGE AND BELIEF.



James D Rein 9/24/22  
SIGNATURE DATE

INDEX NO. N - 17  
3608150000