

15
7/16/84

U.S. PUBLIC LAND SURVEY MONUMENT RECORD

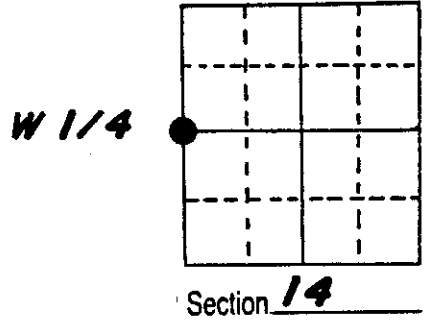
Note: This form is intended and designed to fulfill all requirements of Wisconsin Administrative Code, Chapter A-E 5.02, U.S. Public Land Survey Monument Record (3) (a) (b) (c) (d) (e) (f) (g) (h) (i). An additional sheet may be added if necessary to conform with said requirements.

(a) Corner location: Township 36 North

Range 8 East/West

Town/City/Village OF CRESCENT

County OF ONEIDA

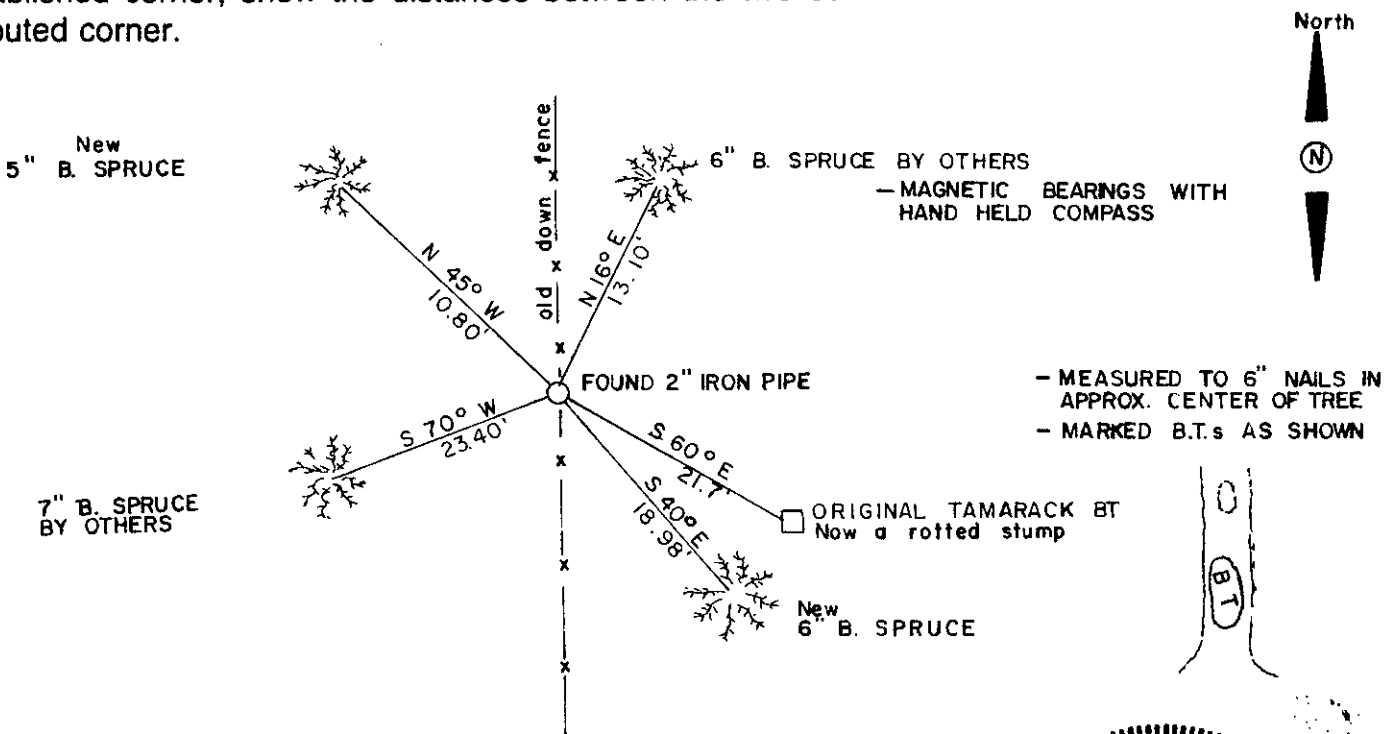


(b) (f) (g) (h) Description of monument found at this corner and if it was accepted, state all evidence (material, testimonial, occupational, plats, records, other monuments) used as a basis for accepting. If not accepted or if nothing was found, state evidence used as basis for establishing location. If reestablished through lost corner proportionate methods, indicate all monuments, distances and directions used to establish.

W.E. Daugherty set orig. corner in July 1863 @ 40.00 ch. B.T.s Tamarack 8 S 60 E 33 lks., Tamarack 8 S 84 W 9 lks.
 -B. F. Dorr at corner in 1894 measured south 43.47ch. and east 82.30ch.
 -D.H. Vaughan found post by Dorr from orig B.T.s west one down east one O.K. (1912)
 -Gordon Hagen a local resident said in the 1930^{ty}s the CCC set a post at the cor. and they built fences from it.

At the West 1/4 I found a 2" iron pipe alongside a post with fences running north & south. I also found the stump of the east B.T. & 2 B.T.s apparently marked by D. Stella. Distances south and east compared reasonably well with Dorr. Corner is in a B. Spruce swamp.

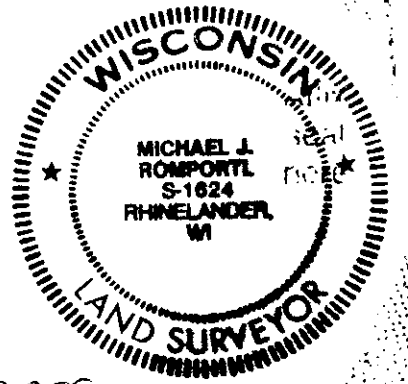
(c) (d) (e) Plan view of corner with ties to at least 4 witness monuments. If in disagreement with previously established corner, show the distances between the two corners and also indicate the ties to the disputed corner.



(i) I, MICHAEL J. ROMPORTL
 (type or print name) certify that the corner location on this record was determined by me or under my direction and control and that this U.S. Public Land Survey Monument Record is correct and complete to the best of my knowledge and belief.

Michael J. Romportl October 24, 1984
 Signature Date

GENISOT & ASSOCIATES, INC.
 1512 N. EAGLE ST.
 RHINELANDER, WS.



Index No. E-17

3608/52000