

CERTIFIED LAND CORNER RESTORATION

Index No. N-9

PUBLIC LAND SURVEY MONUMENT RECORD

History of original corner establishment:

This corner was established from the dependent resurvey and extension survey including lands erroneously omitted from the original survey bordering on Crescent Lake by the United States Department of Interior, General Land Office in 1939. at 36.38 chains west of the S 1/4 corner of S.16 intersect the actual east shore of Crescent Lake, set a concrete monument with a brass tablet embedded in top; E.T.s Norway Pine 6" N 15 E 171ks., Norway Pine 8" S 67E 691ks.

Description of corner evidence found:

- Found U.S.G.L.O. concrete monument flush with ground
- Found 13" Norway Pine N15°E, 11' now a twin norway
- Found 14" Norway Pine S67E, 45.92' with scribing visible

State of Wisconsin } U.S. }
County of Oneida } ss. }

Michael J. Romportl, do hereby certify that on the 24th day of March, 1983, I found evidence of the W.C. on S. line of S.16 Range of East shore of Crescent Lk. Township 36 North, Range 8 East, Fourth Principal Meridian, as described hereon; and that from this evidence I established a new monument and accessories as described hereon to perpetuate the original location of this corner.

Resident witnesses:

Description of monument and accessories I established to perpetuate the original location of this corner.

-I accepted this monument as it is in good condition and witnessed it as shown on back

Compared with all record data & accepted as correct.

Robert K. Kline

Oneida County Surveyor 27 Apr 1983

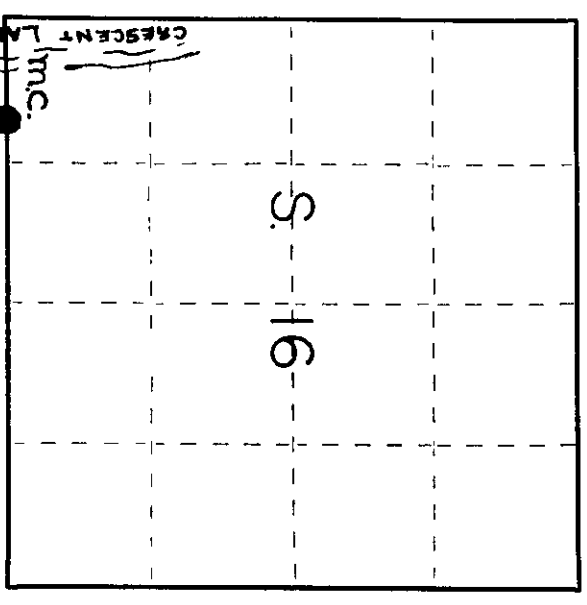
Dated at Rhinelander Wis. this 13 day of April, 1983

Signature: Michael J. Romportl Title: S. Registered Surveyor Registration No. 1624
(County Surveyor, Registered Land Surveyor, or other duly authorized official)

Office of Register of Deeds, County of Oneida
Instrument was filed in this office for record on the 11 day of May, 1983
at 4:15 o'clock P.M.

Donna Verag
(Register of Deeds)

By: *Agnesia A. Pitsa* Deputy



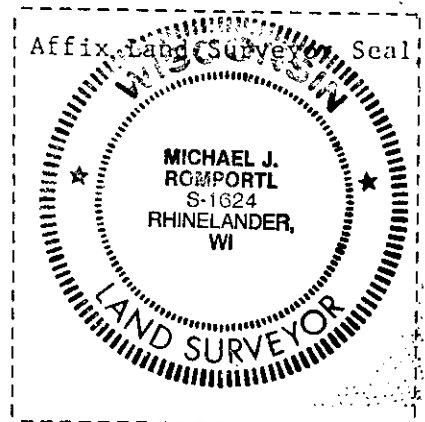
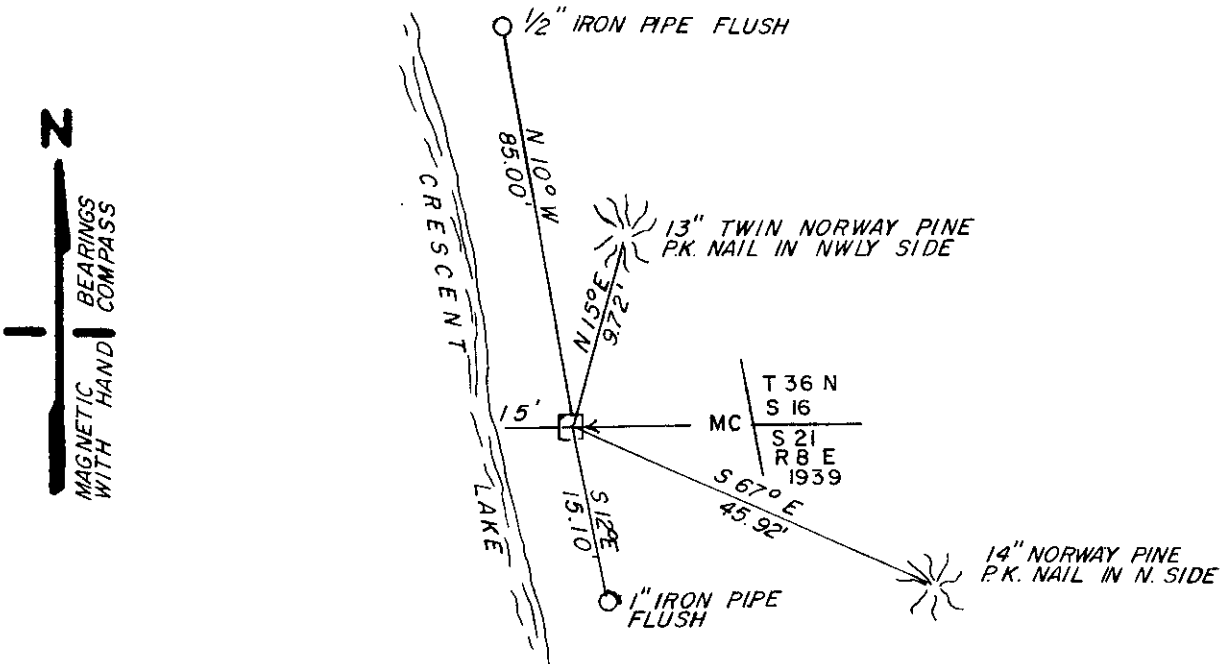
36081600 33

(e) Describe any material discrepancy between the location of the corner as restored or reestablished and the location of that corner as previously restored or reestablished by distance and direction. Show the discrepancy on the plan view drawing under (d), above. Show the distances between the corner as previously restored or reestablished and (1) the corner as restored or reestablished, and (2) to at least 2 of the witness monuments shown on the drawing in (d), above.

none

(f) Was the corner restored through acceptance of (1) an obliterated evidence location, or, (2) a found perpetuated location?
A found perpetuated location

(g&h) Was the corner reestablished through lost corner proportionate methods? If so, show the method, including the directions and distances to other public land survey corners used as evidence or used for proportioning in determining the corner location?



(i) I, Michael J. Romportl
(type or print name) certify that the corner location shown on this record was determined by me or under my direction and control and that this U.S. Public Land Survey Monument Record is correct and complete to the best of my knowledge and belief.

Michael J. Romportl
Signature

4-13-83
Date