

U.S. PUBLIC LAND SURVEY MONUMENT RECORD

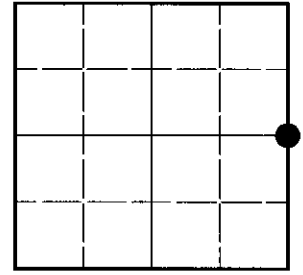
NOTE: This form is intended and designed to fulfill all requirements of Wisconsin Administrative Code, Chapter A-E 7.08 U.S. Public Land Survey Monument Record (3)(a)(b)(c)(d)(e)(f)(g)(h)(i). An additional sheet may be added if necessary to conform with said requirements.

(a) Corner location: Township 36 North

Range 8 East

Town of Crescent

Oneida County, Wisconsin



Section 16

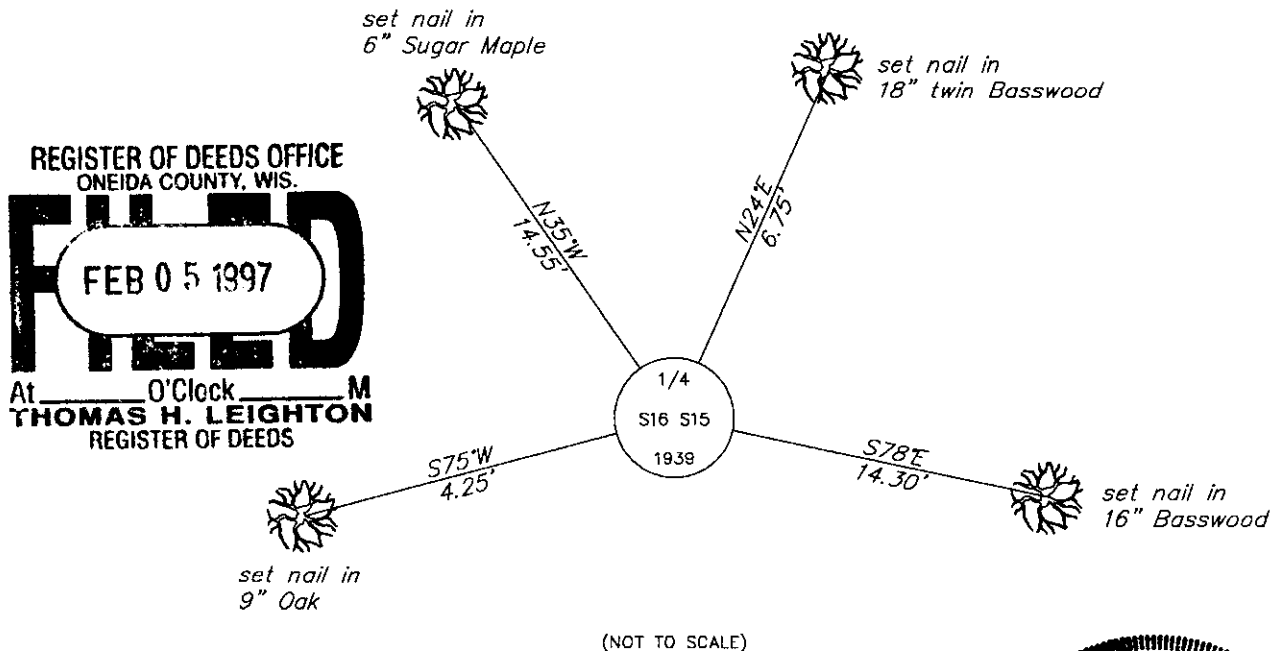
(b)(f)(g)(h) Description of monument found at this corner and if it was accepted, state all evidence (material, testimonial, occupational, plats, records, other monuments) used as a basis for accepting. If not accepted or if nothing was found, state evidence used as basis for establishing location. If reestablished through lost corner proportionate methods, indicate all monuments, distances and directions used to establish. Indicate type of monument found or set and sign post.

July, 1863: William Daugherty, U.S. Deputy Surveyor, set a wood post witnessed by a maple 10" S60°E, 17 lks.; and an ironwood 6" N52°E, 17 lks.

1939: GLO Dependent Resurvey. Found 6" sq. oak stake witnessed by the remains of both original bearing trees. Set 6" dia. concrete monument with brass tablet witnessed by a red oak 7" S49°W, 31 lks.; and a poplar 5" N52-1/2°W, 70 lks.

January 6, 1997: I found and accepted a 6" dia. concrete post with a 3-1/4" dia. GLO brass tablet 2" above grade and marked as shown below. A 2" dia. iron pipe with plate bears Southeast, 0.35 feet. I established accessories as shown below and set a plastic sign post Northwest, 1 foot.

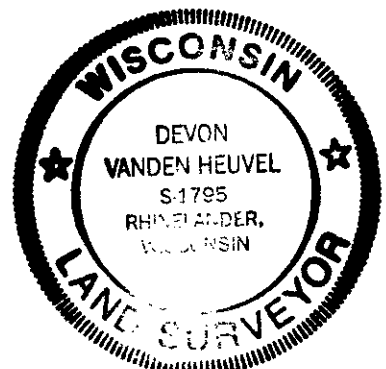
(c)(d)(e) Plan view of corner with ties to at least 4 witness monuments. If in disagreement with previously established corner, show the distances between the two corners and also indicate the ties to the disputed corner.



REGISTER OF DEEDS OFFICE
ONEIDA COUNTY, WIS.
FILED
FEB 05 1997
At _____ O'Clock _____ M
THOMAS H. LEIGHTON
REGISTER OF DEEDS

(i) I, Devon Vanden Heuvel, Registered Land Surveyor #S-1795, hereby certify that the corner location on this record was determined by me or under my direction and control and that this U.S. Public Land Survey Monument Record is correct and complete to the best of my knowledge and belief.

Devon Vanden Heuvel
Signature
1-10-97
Date



Index No. L-13

3608162000