

This form is intended to fulfill the requirements of Chapter A-E 7.08 (3)(a) thru (i) U.S. Public Land Survey Monument Location Record, Wisconsin Administrative Code. Use the reverse side of form for continuation.

U.S. PUBLIC LAND SURVEY MONUMENT LOCATION RECORD

USPLS CORNER: WEST WITNESS MC SECTION: 20 TOWNSHIP: 36 NORTH RANGE: 8 EAST

NAME OF WATERWAY FOR M.C. CORNER : CRESCENT LAKE SECTION LINE: NORTH

~~(CITY)(VILLAGE)(TOWN) OF:~~ CRESCENT COUNTY OF: ONEIDA

Description of monument found or placed and all other evidence used as the basis for monument location; including monuments and related measurements required if the corner location was reestablished by lost corner proportionate methods. Also indicate name of original surveyor, original survey date and the corner monument, bearing trees, witness or other reference monuments established; including measured bearing and distance ties, from available records.

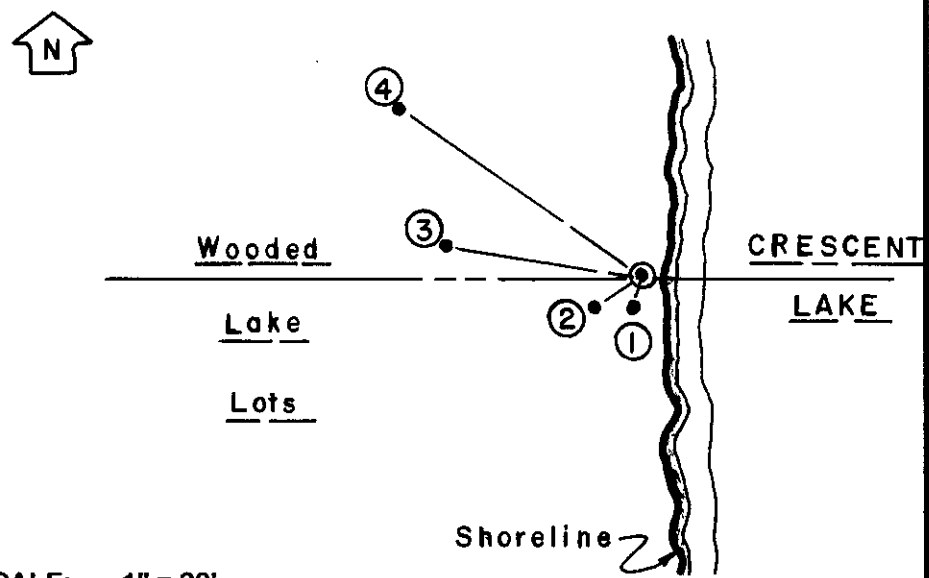
Found and accepted an old obvious iron pipe well point with uncapped top 23" up and tipped 10°+ East; I replumbed and drove the iron pipe to 8" up and then drove a standard 2" dia. x 30" long aluminum pipe monument with stamped Oneida County cap over the iron pipe found to 8" up. Corner falls 2' West of lakeshore bearing North/South this date. Corner is at the NE corner of improved lake frontage lot at Fire No. 6965 Lair Drive.

In July 1863, William E. Daugherty/GLO set a wood post as original corner and marked OBTs: a 20" Pw N19°W 17 links and a 10" Bw S12°W 29 links; although scattered rotted remnants of the OBTs and post may be evidenced, all are considered obliterated beyond recovery usage. In March 1927, George S. Johnston/Civil Engineer notes an iron well point at this corner per his plat of Zahn-Kelly-Jewell Lots of Govt Lot 6 in adjoining Section 17, as filed in Oneida County records.

During a GLO Resurvey in 1939, per field notes filed as L-863 in Oneida County survey records, Cadastral Surveyors Hal D. Craig & Lester S. Mann found a 4" square pine stake at the original GLO MC on old lake bank 6' high and bearing N20°W/S20°E at approximately 1 chain(66') from new lakeshore; and also found original GLO Pw BT N19°W 17 links as a 24" stump with old 'V' cut and new scribe marks, and also found original GLO Birch BT S12°W 29 links as a stump hole; no new wood post, iron or concrete monument was reset at the MC corner by the GLO Resurvey, nor newer BTs noted, which is considered very irresponsible by this surveyor, as all of the foregoing evidence is now obliterated beyond usage!

This recovery completed November 21, 2002 and indirectly witnessed by adjoiner owners SW of corner.

Plan view map of monument location with bearing and distance ties to a minimum of four(4) described witness or reference monuments of concrete, natural stone, iron, live bearing trees or equivalent material. If applicable, also show a minimum of two(2) bearing and distance ties to any other monument found and not accepted; including the bearing and distance from the accepted monument.



- WITNESS MONUMENT TIES:**
- ① New 6" Mr BT with 'Y' trunk 3' up S15°W 2.85',
 - ② New 7" Cedar BT S58°W 5.28'.
 - ③ New 5" Fir BT N80°W 20.57'.
 - ④ New 6.5" Pr BT N54°W 30.28'.
- I set a standard white poly 'T' marker post 5" WSW of the corner monument.

SCALE: 1" = 20'

Unless otherwise indicated, all bearing tree ties are to a .25" dia. by 2.5" long PK nail with a 1.25" dia. steel washer driven into unblazed right face and a .25" dia. by 2.5" long PK nail with a 2" dia. steel washer stamped BT is also driven into unblazed face of bearing tree at DBH; the basis for measured bearings is by compass to nearest degree and all tie distances are measured horizontal by steel tape corrected to nearest 1/100th feet at standard temperature of 68° F.

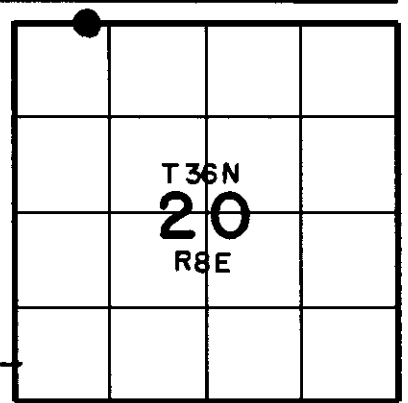
RLS SEAL:



LAND SURVEYOR CERTIFICATE:

I, William C. Rohde, hereby certify that I am duly licensed as a Professional Land Surveyor in the State of Wisconsin; that this USPLS monument location was determined by me and/or under my direct supervision and control; and that this U.S. Public Land Survey Monument Location Record is true and correct to the best of my knowledge and belief.

Signed: *William C. Rohde*
William C. Rohde RLS 841



SECTION LOCATION MAP
INDEX NO. N 56

Date Signed: March 1, 2003

3608170031