

U.S. PUBLIC LAND SURVEY MONUMENT LOCATION RECORD

Recorders Data

USPLS CORNER: NORTH WITNESS MC SECTION: 16 TOWNSHIP: 36 NORTH RANGE: 08 EAST

NAME OF WATERWAY FOR M.C. CORNER : CRESCENT LAKE SECTION LINE: WEST

~~(CITY)(VILLAGE)(TOWN)~~ OF: CRESCENT COUNTY OF: ONEIDA

Description of monument found or placed and all other evidence used as the basis for monument location; including monuments and related measurements required if the corner location was reestablished by lost corner proportionate methods. Also indicate name of original surveyor, original survey date and the corner monument, bearing trees, witness or other reference monuments established; including measured bearing and distance ties, from available records.

Iron pipe monument set as a Witness MC per Certified Survey Map No. 1312 not found, so I reset the record location by transit/tape resurvey with a standard 2" dia. by 30" long aluminum pipe monument with stamped Oneida County cap 3" above existing lakeshore grade. The 1939 GLO Resurvey concrete monument with brass tablet indicated to be in the lake per CSM No. 1312 is now destroyed as I found two(2) remnants of the 6" dia. concrete post along the existing lake shoreline, which I placed flat on grade next to the new monument set.

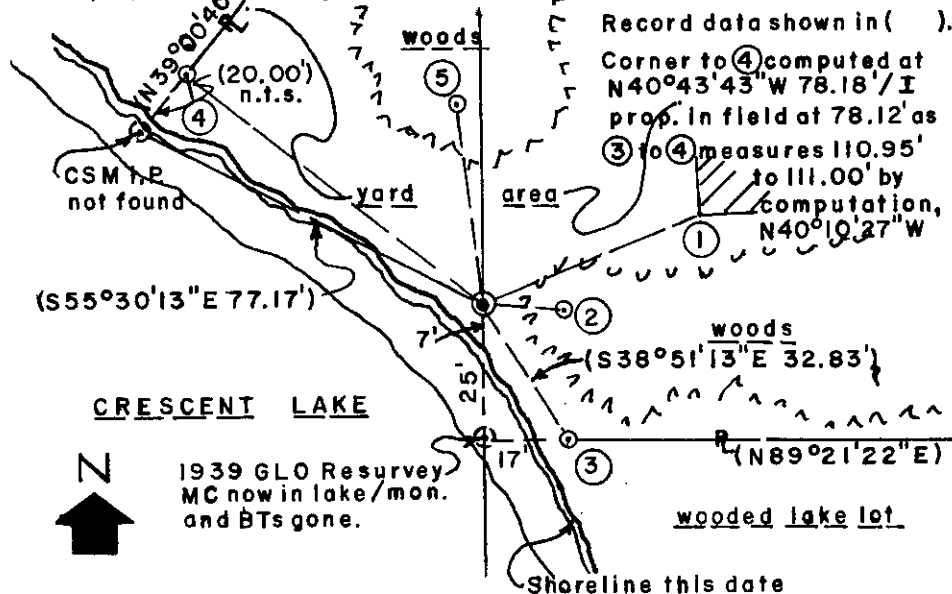
Existing shoreline has accreted about 300 feet South of the original GLO MC location which I also recovered previously on May 10, 2000. In September and October 1939, Hal D. Craig and Lester S. Mann/GLO, during their resurvey, set a new MC with a standard 6" dia. by 24" long brass capped concrete monumet on the accreted lake shore S07°19'E 6.26 chains from the foregoing original GLO MC which they also had found and remonumented; their new MC monument now destroyed in lake bed, undoubtedly from lake ice and wave action.

In August 1988, Todd Loftus/RLS 1523, per his Certified Survey Map No. 1312 filed in Oneida County records, notes the 1939 GLO MC monument location in Crescent Lake and the iron pipe he set as a new Witness MC; both now gone as I detail first above. Witness No. 3 and 4 below are also iron pipes indicated on subject CSM.

The 1939 GLO Resurvey field notes are filed as L-863 and related plat as B-1745 in Oneida County survey records.

This recovery completed June 6, 2000; there were no direct witnesses.

Plan view map of monument location with bearing and distance ties to a minimum of four(4) described witness or reference monuments of concrete, natural stone, iron, live bearing trees or equivalent material. If applicable, also show a minimum of two(2) bearing and distance ties to any other monument found and not accepted; including the bearing and distance from the accepted monument.



WITNESS MONUMENT TIES:

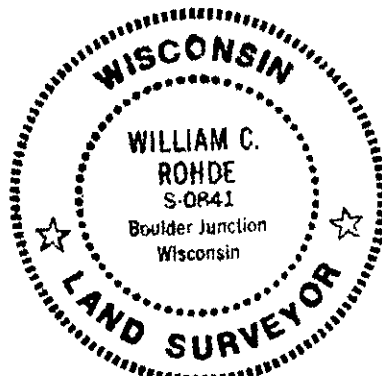
- ① New witness SW corner of block cottage foundation N66°E 49.05'.
- ② New BT 12" Pr S87°E 17.04'.
- ③ New witness 1.5" dia. galvanized iron pipe found with uncapped top 9" above grade S32°E 32.83'.
- ④ New witness 1.25" dia. iron pipe found with uncapped top 1" below grade N52°W 78.12'.
- ⑤ New BT 9" Pr N08°W 42.03'; with standard BT sign on upper face.

I set a standard white poly 'T' marker post 8" South of new monument set.

SCALE: 1" = 40'

Unless otherwise indicated, all bearing tree ties are to a .25" dia. by 2.5" long PK nail with a 1.25" dia. steel washer driven into unblazed right face and a .25" dia. by 2.5" long PK nail with a 2" dia. steel washer stamped BT is also driven into unblazed face of bearing tree at DBH; the basis for measured bearings is by compass to nearest degree and all tie distances are measured horizontal by steel tape corrected to nearest 1/100th feet at standard temperature of 68° F.

RLS SEAL:



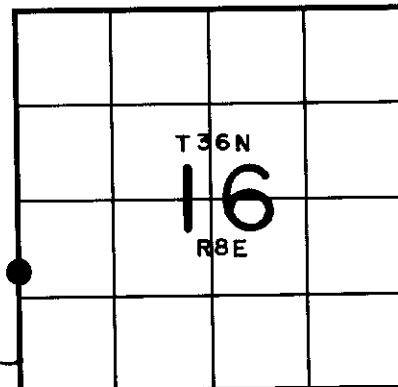
SHEET 1 OF 1
FORM REVISED: 06/01/99

LAND SURVEYOR CERTIFICATE:

I, William C. Rohde, hereby certify that I am duly licensed as a Professional Land Surveyor in the State of Wisconsin; that this USPLS monument location was determined by me and/or under my direct supervision and control; and that this U.S. Public Land Survey Monument Location Record is true and correct to the best of my knowledge and belief.

Signed: *William C. Rohde*
William C. Rohde RLS 841

Date Signed: August 24, 2000



SECTION LOCATION MAP
INDEX NO. L-M 9

3608171200