

This form is intended to fulfill the requirements of Chapter A-E 7.08 (3)(a) thru (l) U.S. Public Land Survey Monument Location Record, Wisconsin Administrative Code. Use the reverse side of form for continuation.

**U.S. PUBLIC LAND SURVEY MONUMENT LOCATION RECORD**

Recorders Data

USPLS CORNER: NORTH MC SECTION: 16 TOWNSHIP: 36 NORTH RANGE: 08 EAST

NAME OF WATERWAY FOR M.C. CORNER: CRESCENT LAKE SECTION LINE: WEST

(CITY)(VILLAGE)(TOWN) OF: CRESCENT COUNTY OF: ONEIDA

Description of monument found or placed and all other evidence used as the basis for monument location; including monuments and related measurements required if the corner location was reestablished by lost corner proportionate methods. Also indicate name of original surveyor, original survey date and the corner monument, bearing trees, witness or other reference monuments established; including measured bearing and distance ties, from available records.

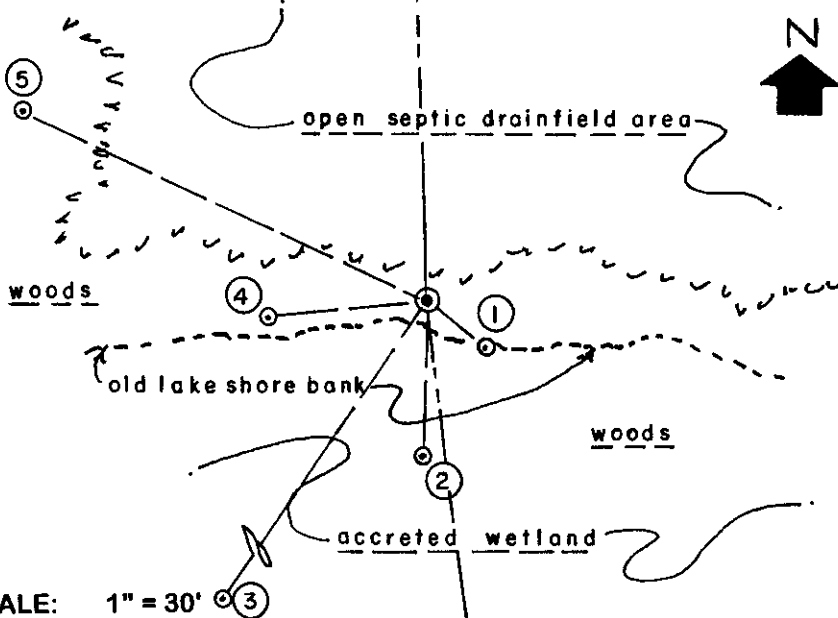
Found and accepted a standard undisturbed 6" dia. concrete post monument with GLO 1939 stamped brass tablet in top 5" above grade. Also found a standard white poly 'T' marker post 10" East of the monument, which also falls on the upper edge of the 4' high original north bank of Crescent Lake which has accreted as wetland about 300 feet South to the existing lakeshore.

In July 1863, William E. Daugherty/GLO set a wood post as the original corner and marked new OBTs: a 10" Hemlock N62°E 10 links and a 12" Pw N72°W 12 links, all of which are now obliterated.

In September and October 1939, Hal Craig and Lester S. Mann/GLO, during their resurvey, per plat and notes filed as L-863 in Oneida County survey records, noted they had set a standard 6" dia. by 24" long concrete post, with stamped brass tablet in top, 18" into the ground at the original GLO survey meander corner location verified from the stump remains of both GLO OBTs, and marked new BTs: a 4" Or S63.25°E 18 links, now the West trunk of a twin 16" Or with blaze scars on West face; a 6" Pn S05°E 38 links, now a 13" Pr with plain lower blaze scar on North face; a 4" Poplar N54.25°E 19 links, now a 16" high 15" dia. sawed stump with no marks and a 4" Poplar N30.25°W 47 links, now gone.

This recovery completed May 10, 2000; there were no direct witnesses.

Plan view map of monument location with bearing and distance ties to a minimum of four(4) described witness or reference monuments of concrete, natural stone, iron, live bearing trees or equivalent material. If applicable, also show a minimum of two(2) bearing and distance ties to any other monument found and not accepted; including the bearing and distance from the accepted monument.



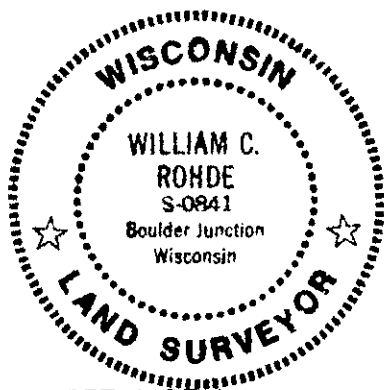
**WITNESS MONUMENT TIES:**

- ① 1939 GLO BT now West 16" Or of a twin Or S50°E 11.85'.
- ② 1939 GLO BT now 13" Pr S02°W 24.61'.
- ③ New BT 18" Pw S34°W 68.90'.
- ④ New BT North 9" Or of 3 Or S83°W 25.35'.
- ⑤ New BT 13" Or N65°W 69.05'.

SCALE: 1" = 30'

Unless otherwise indicated, all bearing tree ties are to a .25" dia. by 2.5" long PK nail with a 1.25" dia. steel washer driven into unblazed right face and a .25" dia. by 2.5" long PK nail with a 2" dia. steel washer stamped BT is also driven into unblazed face of bearing tree at DBH; the basis for measured bearings is by compass to nearest degree and all tie distances are measured horizontal by steel tape corrected to nearest 1/100th feet at standard temperature of 68° F.

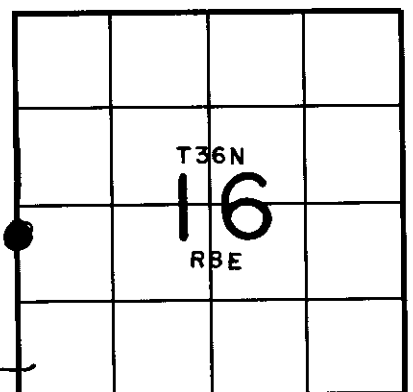
RLS SEAL:



LAND SURVEYOR CERTIFICATE:

I, William C. Rohde, hereby certify that I am duly licensed as a Professional Land Surveyor in the State of Wisconsin; that this USPLS monument location was determined by me and/or under my direct supervision and control; and that this U.S. Public Land Survey Monument Location Record is true and correct to the best of my knowledge and belief.

Signed: *William C. Rohde*  
William C. Rohde RLS 841



SECTION LOCATION MAP  
INDEX NO. LM-9

SHEET 1 OF 1  
FORM REVISED: 06/01/99

Date Signed: August 24, 2000

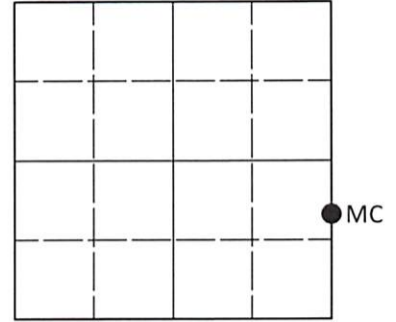
3608171300

# U.S. PUBLIC LAND SURVEY MONUMENT RECORD

Note: This form is intended and designed to fulfill all requirements of Wisconsin Administrative Code, Chapter A-E 7.08 U.S. Public Land Survey Monument Record (3)(a-i).

(a) CORNER LOCATION  
 Meander Cor. of Secs. 16 & 17  
 Township 36 North  
 Range 8 East of the 4th P.M.  
 Town of Crescent  
 County of Oneida

WISCRS - Oneida County  
 N: 152,214.66 USft  
 E: 238,186.82 USft  
 Datum: NAD 83(2011) ep. 2010.00  
 GNSS Method: RTN - Offset  
 GNSS Control: WISCORS VRS



Sec. 17, T. 36 N., R. 8 E.

(b)(f)(g)(h) Description of monument found at this corner and if it was accepted, state all evidence (material, testimonial, occupational, plats, records, other monuments) used as a basis for accepting. If not accepted or if nothing was found, state evidence used as basis for establishing location. If re-established through lost corner proportionate methods, indicate all monuments, distances and directions used to establish. Indicate type of monument and sign post found or set.

*This record is a perpetuation of the following land corner document(s):*

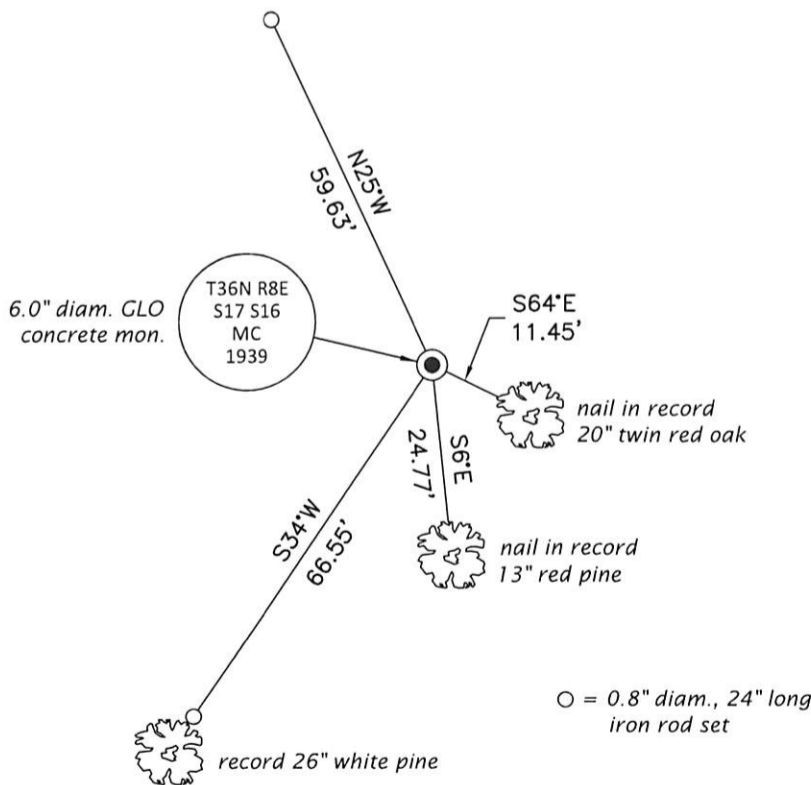
*August 24, 2000: USPLS Monument Record by William C. Rohde, filed in Oneida County*

*A complete history of the corner can be found on the previous land corner document(s). I accept the record activity as a true and faithful perpetuation or reestablishment of the original corner location and further perpetuate it as described below.*

*May 17, 2022: I found and accepted the record monument, a 6.0" diam. concrete monument, firmly set, with a 3.3" diam. GLO brass tablet projecting 3" above the ground surface. The #4 record bearing tree is in place, but a tree is now on line. The #5 record bearing tree is gone. I found or established accessories as indicated below. I found a white vinyl sign post bearing East, 0.8 ft.*

*The coordinate value shown has been determined by traversing from two or more GNSS offset points satisfying the accuracy requirements defined and qualified in the 2022 Oneida County Fee Schedule for USPLS Corners.*

(c)(d)(e) Plan view of corner with ties to at least 4 witness monuments. If in disagreement with previously established corner, show the distances between the two corners and also indicate the ties to the disputed.



REGISTER OF DEEDS OFFICE  
 ONEIDA COUNTY  
 FILED

AUG 02 2022

KYLE J. FRANSON  
 REGISTER OF DEEDS

(i) I, Jeffrey W. Austin, Professional Land Surveyor No. S-1885, hereby certify that the corner location on this record was determined by me or under my direction and control and that this U.S. Public Land Survey Monument Record is correct and complete to the best of my knowledge and belief.

\_\_\_\_\_  
 Signature

JUNE 1, 2022  
 \_\_\_\_\_  
 Date