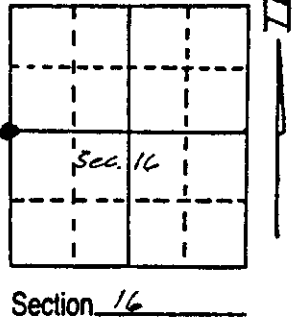


U.S. PUBLIC LAND SURVEY MONUMENT RECORD

Note: This form is intended and designed to fulfill all requirements of Wisconsin Administrative Code, Chapter A-E 5.02, U.S. Public Land Survey Monument Record (3) (a) (b) (c) (d) (e) (f) (g) (h) (i). An additional sheet may be added if necessary to conform with said requirements.

(a) Corner location: Township 36 North
 Range 8 East/~~XXXX~~

Town/City/Village Crescent
 County Oneida



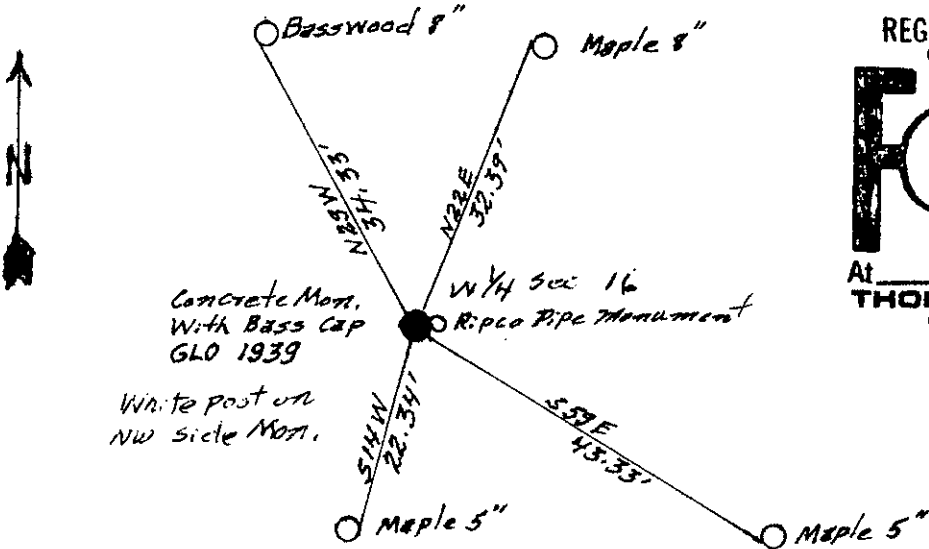
(b) (f) (g) (h) Description of monument found at this corner and if it was accepted, state all evidence (material, testimonial, occupational, plats, records, other monuments) used as a basis for accepting. If not accepted or if nothing was found, state evidence used as basis for establishing location. If reestablished through lost corner proportionate methods, indicate all monuments, distances and directions used to establish.

Original Survey in 1865 by William S Daugherty. 40 ch. N. bot. S16 & S17 set 1/2 S post, Tam. 8, N83W, 10 lks, Tam 8, S46E, 29 lks.
 Dependent Resurvey by Hal D. Craig and Lester S. Mann in 1939
 Proportionate Distance, no evidence of original found. Original corner post and bearing trees fall in road. Set 6" diam. conc. monument 2 1/4" long flush with surface for the 1/4 sec. Cor. with brass cap stamped 1/4, S17, S16, 1939.
 Birch 5", S62E, 7 1/2 lks. (48.84') Poplar 6", N77 1/2 W, 32 lks. (21.12')
 Road bears E & W.

Found: Conc. Monument with brass cap in place.
 Ripco pipe monument on east side of conc. monument.
 No evidence of B.T.'s.

I blazed and scribed the following New Bearing trees and set spikes in the side of each tree. Maple 8, N22E, 32.39 ft. Maple 5, S59E, 43.33 ft. Maple 5, S14W, 22.34 ft. Basswood 8, N29W, 34.33 ft.

(c) (d) (e) Plan view of corner with ties to at least 4 witness monuments. If in disagreement with previously established corner, show the distances between the two corners and also indicate the ties to the disputed corner.



REGISTER OF DEEDS OFFICE
 ONEIDA COUNTY, WIS.
FILED
 MAY 25 1990
 At _____ O'Clock _____ M
 THOMAS H. LEIGHTON
 REGISTER OF DEEDS

WISCONSIN
 ★ LAND SURVEYOR ★
 JEAN F. RESVICK
 BLMELANDER,
 WIS.

(i) I, Jean F. Resvick, S-802
 (type or print name) certify that the corner location on this record was determined by me or under my direction and control and that this U.S. Public Land Survey Monument Record is correct and complete to the best of my knowledge and belief.

Jean F. Resvick 5-17-90
 Signature Date

3608172000

Index No. 6-7