

U. S. PUBLIC LAND SURVEY RECORD

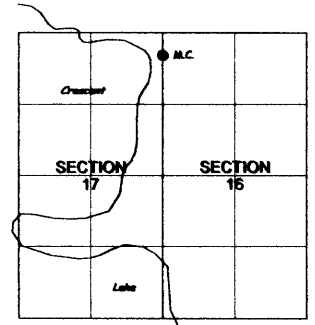
NOTE: This form is intended and designed to fulfill all requirements of Wisconsin Administrative Code, Chapter AE-7.08 U.S. Public Land Survey Record (3) (a) (b) (c) (d) (e) (f) (g) (h) (i). An additional sheet may be added if necessary to conform with said requirements.

(a) CORNER LOCATION:

State Plane Coordinates

M.C. Corner of Sec. 17
 Township 36 North
 Range 8 East
 Town/City Woodboro

X N/A
 Y N/A
 Datum Base N/A
 County of Oneida



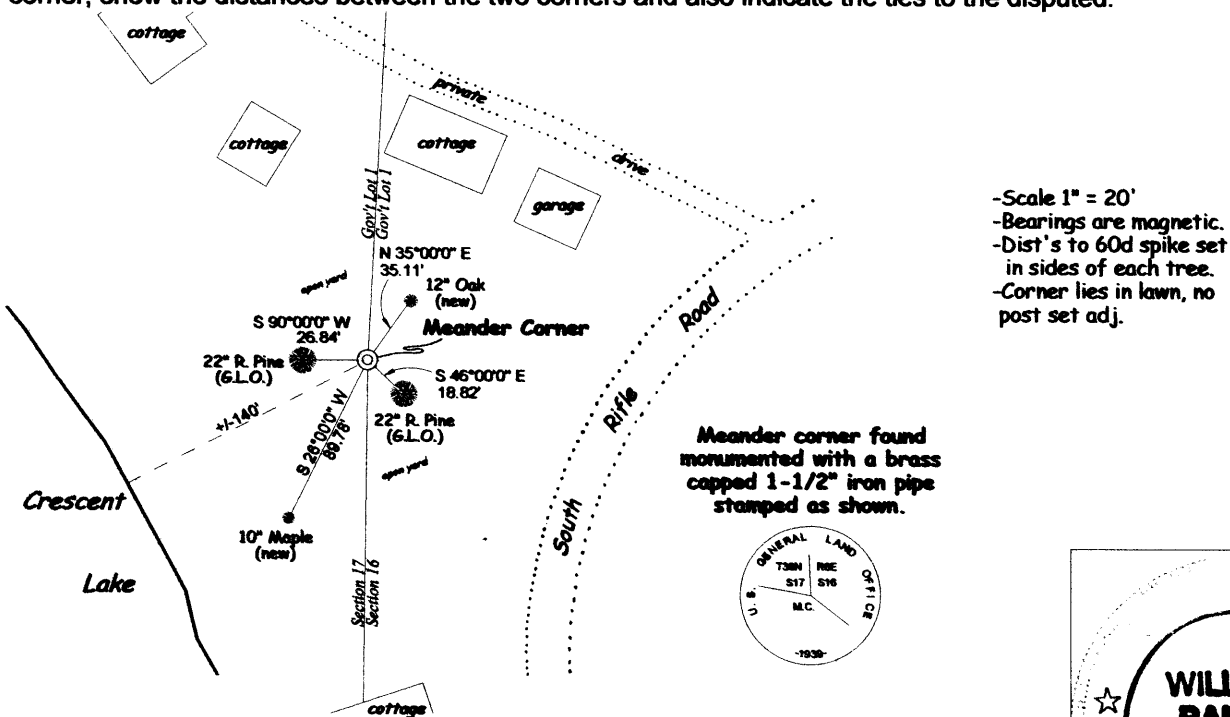
(b) HISTORY OF ORIGINAL CORNER ESTABLISHMENT

Original Surveyor: Wm. E. Daugherty Original B.T.'S 15" Aspen, N 68° E, 4 lks.
 Date of Survey: Commenced July, 1863 10" W. Pine, N 83° W, 18 lks.
 Completed July, 1863

(b) (f) (g) (h) Description of monument found at this corner and if it was accepted, state all evidence (material, testimony, occupational, plats, records or other monuments) used as a basis for accepting. If not accepted or if nothing was found, state evidence used for establishing location. If re-established through lost corner proportionate methods, indicate all monuments, distances and directions used to establish. Indicate type of monument and sign post found or set.

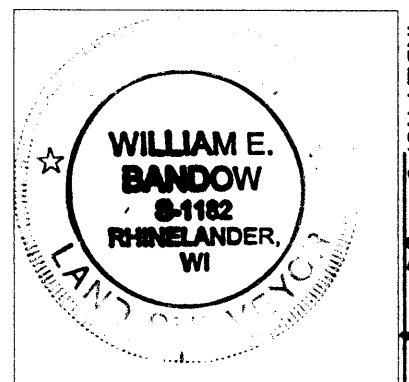
- 1939 - As part of Dependent Resurvey & Ext. Survey of Sec's. 16 & 21 by U.S.G.L.O., original corner evidence was recovered by Hal D. Craig. He perpetuated corner from original W. Pine stump with brass capped iron post; made new B.T.'s - 10" Norway Pine, S 46½° E, 28 lks (18.48') and 11' Norway Pine, S 88¼° W, 40 lks (26.40').
- 2004 - I recovered the G.L.O.'s brass capped iron pipe as evidenced by their two B.T.'s still existing and in proper relation to corner. The corner lies in adjacent land owners yard. I further perpetuated this corner as shown below.

(c) (d) (e) Plan view of corner with ties to at least 4 witnesses monuments. if in disagreement with previously established corner, show the distances between the two corners and also indicate the ties to the disputed.



(i) I, William E Bandow, hereby certify that the corner location on this record was determined by me or under my direction and control and that this U.S. Public Land Survey Monument Record is correct and complete to the best of my knowledge and belief.

William E Bandow 12-17-04
 Signature Date



INDEX NO. 5-K 9

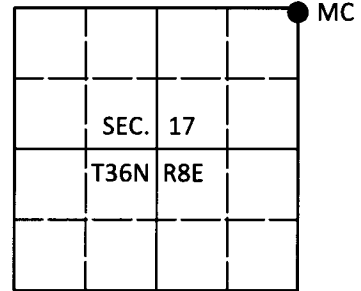
3608173800

U.S. PUBLIC LAND SURVEY MONUMENT RECORD

Note: This form is intended and designed to fulfill all requirements of Wisconsin Administrative Code, Chapter A-E 7.08 U.S. Public Land Survey Monument Record (3)(a-i).

(a) CORNER LOCATION
 Meander Cor. of Secs. 16 & 17
 Township 36 North
 Range 8 East of the 4th P.M.
 Town of Crescent
 County of Oneida

WISCRS - Oneida County
 N: 155,410.00 USft
 E: 238,226.93 USft
 Datum: NAD 83(2011)
 GNSS Method: RTN - Direct
 GNSS Control: WISCORS VRS



(b) HISTORY OF ORIGINAL CORNER ESTABLISHMENT

Original Surveyor:

Original Accessories:

Date of Survey Commenced:
 Completed:

See previous USPLS Monument Record

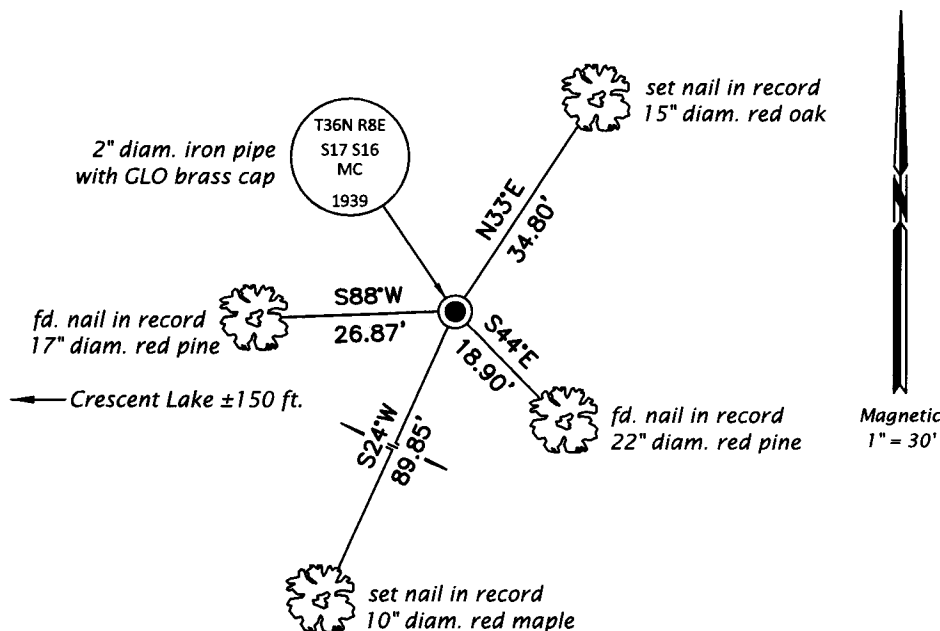
(b)(f)(g)(h) Description of monument found at this corner and if it was accepted, state all evidence (material, testimonial, occupational, plats, records, other monuments) used as a basis for accepting. If not accepted or if nothing was found, state evidence used as basis for establishing location. If re-established through lost corner proportionate methods, indicate all monuments, distances and directions used to establish. Indicate type of monument and sign post found or set.

This is a perpetuation of a previous USPLS Monument Record by William E. Bandow, RLS dated December 17, 2004 and filed in the office of the Oneida County Register of Deeds. A complete history of the corner can be found on the previous monument record. I accept the previous location as a true and faithful perpetuation or reestablishment of the original corner location and further perpetuate it as follows.

March 12, 2018: I found and accepted the record monument, a 2" diam. iron pipe with a 2-1/2" diam. GLO brass cap projecting 8" above the ground surface. I found accessories as shown below and did not set a sign post as the corner is in an improved area.

The coordinate value shown has been verified by at least one of the following methods: 1) comparison to a previously GPS determined published value; 2) the value is the average of two or more GPS observations at a markedly different time; 3) one or more distances were measured back to the GPS observed corner from temporary GPS observed offset locations.

(c)(d)(e) Plan view of corner with ties to at least 4 witness monuments. If in disagreement with previously established corner, show the distances between the two corners and also indicate the ties to the disputed.




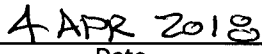
REGISTER OF DEEDS OFFICE
 ONEIDA COUNTY
 FILED

APR 12 2018

KYLE J. FRANSON
 REGISTER OF DEEDS

(i) I, Jeffrey W. Austin, Professional Land Surveyor No. S-1885, hereby certify that the corner location on this record was determined by me or under my direction and control and that this U.S. Public Land Survey Monument Record is correct and complete to the best of my knowledge and belief.


 Signature


 Date