

This form is intended to fulfill the requirements of Chapter A-E 7.08 (3)(a) thru (i) U.S. Public Land Survey Monument Location Record, Wisconsin Administrative Code. Use the reverse side of form for continuation.

U.S. PUBLIC LAND SURVEY MONUMENT LOCATION

Recorders Data

USPLS CORNER: SOUTH MC AND WC SECTION: 17 TOWNSHIP: 36 NORTH RANGE: 08 EAST

NAME OF WATERWAY FOR M.C. CORNER: CRESCENT LAKE SECTION LINE: WEST

~~(CITY)(VILLAGE)(TOWN) OF:~~ CRESCENT COUNTY OF: ONEIDA

Description of monument found or placed and all other evidence used as the basis for monument location; including monuments and related measurements required if the corner location was reestablished by lost corner proportionate methods. Also indicate name of original surveyor, original survey date and the corner monument, bearing trees, witness or other reference monuments established; including measured bearing and distance ties, from available records.

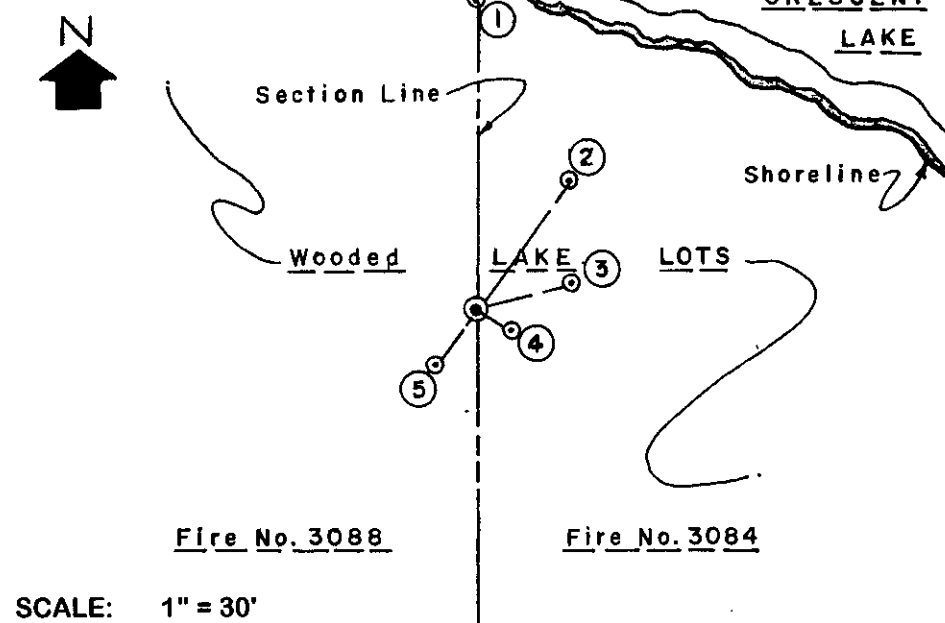
Found and accepted a standard 6" dia. concrete monument with stamped GLO brass tablet in top at 2"+ below grade on a steep slope down to south shore of Crescent Lake. Due to bank erosion, the monument had tipped North down the bank, so I carefully excavated to its base imprint in sub-soil, which also revealed the original plumb soil socket, and I tipped the monument South and re-plumbed with tamped backfill to secure for new ties.

In July 1863, William E. Daugherty/GLO set a wood post as the original MC/Wit Corner at 1.30 chains South of the NW corner of Section 17 in lake and marked OBTs: An 8" Hemlock S73°W 5 links and a 12" Hemlock N69°W 9 links; all of which are now obliterated.

In 1939, during a GLO resurvey, Craig and Mann found and accepted a 1" iron pipe at this corner location, from which they found the SW OBT as a stump and the NW OBT as a live 14" Hemlock with plain scribing in its face blaze at S69°E 9 links, and they reset the iron pipe at the corner with a standard 6" dia. by 24" long concrete post with stamped GLO brass tablet in top and noted a local BT 10" Hemlock stump S73°W 5 links, now gone, and they scribed new BTs: An 8" Hemlock S57°E 10 links I found OK and used for new ties; and a 10" Hemlock N78°W 70 links, now obliterated. See GLO resurvey field notes filed as L-863 in Oneida County survey records.

In 1940, Maine notes the GLO brass cap in concrete post at this corner per Plat of Survey filed as A-118 in Oneida County survey records. This recovery was completed and witnessed by both adjoining owners on July 4, 2000.

Plan view map of monument location with bearing and distance ties to a minimum of four(4) described witness or reference monuments of concrete, natural stone, iron, live bearing trees or equivalent material. If applicable, also show a minimum of two(2) bearing and distance ties to any other monument found and not accepted; including the bearing and distance from the accepted monument.

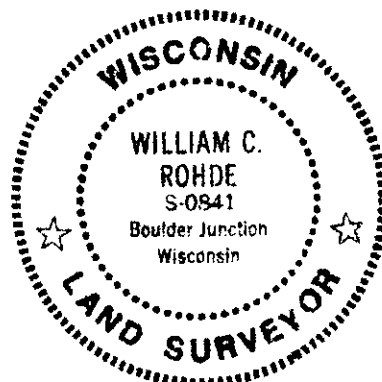


- WITNESS MONUMENT TIES:**
- ① Old 1.5" dia. iron pipe found with uncapped top 4" above grade and tipped 30°West at 49.25' North.
 - ② New BT 12" Hemlock at N35°E 25.12'.
 - ③ New BT 11" Hemlock at N74°E 15.73'.
 - ④ Old GLO BT 15" Hemlock with no visible markings at S56°E 6.58'; std BT sign set on upper face.
 - ⑤ New BT 12" Pw S38°W 10.83'.
- Standard white poly 'T' marker post set on south side of corner post.

SCALE: 1" = 30'

Unless otherwise indicated, all bearing tree ties are to a .25" dia. by 2.5" long PK nail with a 1.25" dia. steel washer driven into unblazed right face and a .25" dia. by 2.5" long PK nail with a 2" dia. steel washer stamped BT is also driven into unblazed face of bearing tree at DBH; the basis for measured bearings is by compass to nearest degree and all tie distances are measured horizontal by steel tape corrected to nearest 1/100th feet at standard temperature of 68° F.

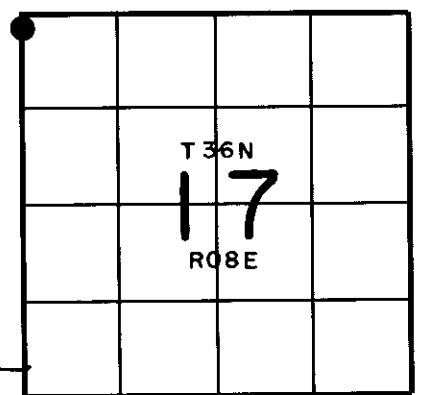
RLS SEAL:



LAND SURVEYOR CERTIFICATE:

I, William C. Rohde, hereby certify that I am duly licensed as a Professional Land Surveyor in the State of Wisconsin; that this USPLS monument location was determined by me and/or under my direct supervision and control; and that this U.S. Public Land Survey Monument Location Record is true and correct to the best of my knowledge and belief.

Signed: *William C. Rohde*
 William C. Rohde RLS 841



SECTION LOCATION MAP

Date Signed: January 31, 2001

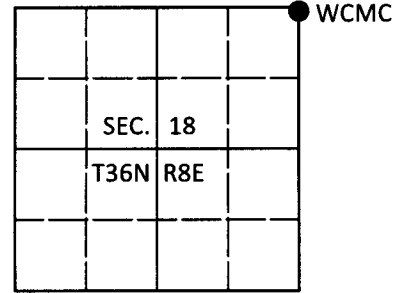
INDEX NO. 3608183900

U.S. PUBLIC LAND SURVEY MONUMENT RECORD

Note: This form is intended and designed to fulfill all requirements of Wisconsin Administrative Code, Chapter A-E 7.08 U.S. Public Land Survey Monument Record (3)(a-i).

(a) CORNER LOCATION
 Wit. Meander Cor. of Secs. 17 & 18
 Township 36 North
 Range 8 East of the 4th P.M.
 Town of Crescent
 County of Oneida

WISCRS - Oneida County
 N: 155,750.83 USft
 E: 233,926.33 USft
 Datum: NAD 83(2011)
 GNSS Method: RTN - Offset
 GNSS Control: WISCORS VRS



(b) HISTORY OF ORIGINAL CORNER ESTABLISHMENT

Original Surveyor: _____ Original Accessories: _____
 Date of Survey Commenced: _____ See previous USPLS Monument Record
 Completed: _____

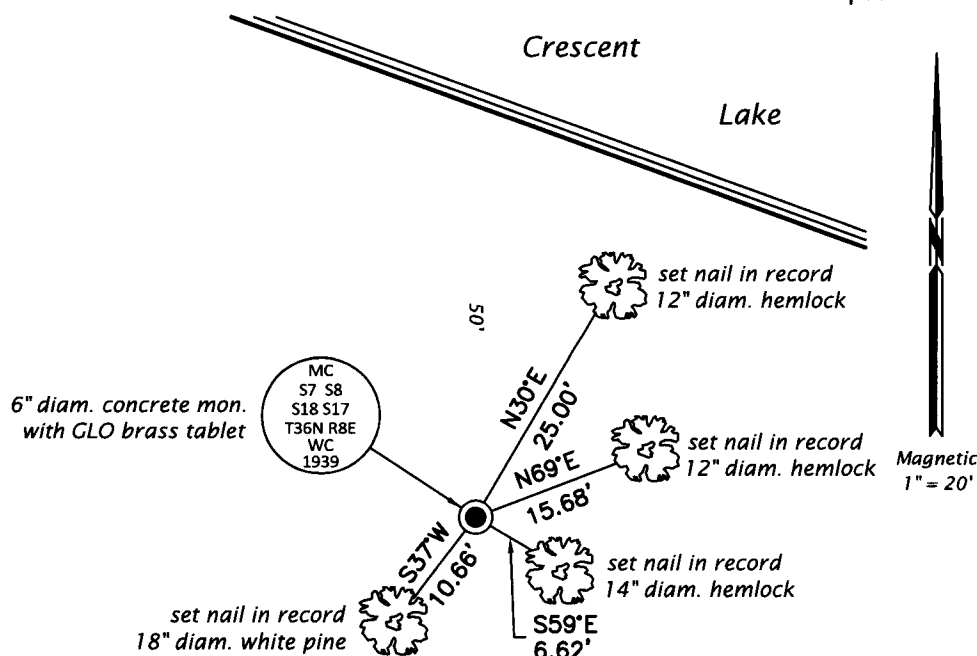
(b)(f)(g)(h) Description of monument found at this corner and if it was accepted, state all evidence (material, testimonial, occupational, plats, records, other monuments) used as a basis for accepting. If not accepted or if nothing was found, state evidence used as basis for establishing location. If re-established through lost corner proportionate methods, indicate all monuments, distances and directions used to establish. Indicate type of monument and sign post found or set.

This is a perpetuation of a previous USPLS Monument Record by William C. Rohde, RLS dated January 31, 2001 and filed in the office of the Oneida County Register of Deeds. A complete history of the corner can be found on the previous monument record. I accept the previous location as a true and faithful perpetuation or reestablishment of the original corner location and further perpetuate it as follows.

March 13, 2018: I found and accepted the record monument, a 6" diam. concrete monument with a GLO brass tablet buried 4" beneath the ground surface. I found accessories as shown below and found a white vinyl sign post bearing N27°W, 7.7 ft. dist.

The coordinate value shown has been verified by at least one of the following methods: 1) comparison to a previously GPS determined published value; 2) the value is the average of two or more GPS observations at a markedly different time; 3) one or more distances were measured back to the GPS observed corner from temporary GPS observed offset locations.

(c)(d)(e) Plan view of corner with ties to at least 4 witness monuments. If in disagreement with previously established corner, show the distances between the two corners and also indicate the ties to the disputed.



REGISTER OF DEEDS OFFICE
 ONEIDA COUNTY
 FILED

APR 12 2018

KYLE J. FRANSON
 REGISTER OF DEEDS

(i) I, Jeffrey W. Austin, Professional Land Surveyor No. S-1885, hereby certify that the corner location on this record was determined by me or under my direction and control and that this U.S. Public Land Survey Monument Record is correct and complete to the best of my knowledge and belief.

 Signature

4 APR 2018

 Date