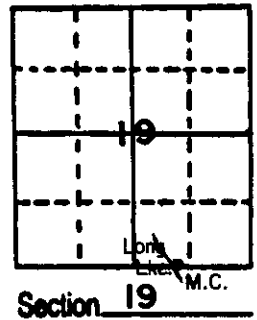


U.S. PUBLIC LAND SURVEY MONUMENT RECORD

Note: This form is intended and designed to fulfill all requirements of Wisconsin Administrative Code, Chapter A-E 5.02, U.S. Public Land Survey Monument Record (3) (a) (b) (c) (d) (e) (f) (g) (h) (i). An additional sheet may be added if necessary to conform with said requirements.

(a) Corner location: Township 36 North
 Range 8 East/West
 Town/City/Village CRESCENT
 County ONEIDA



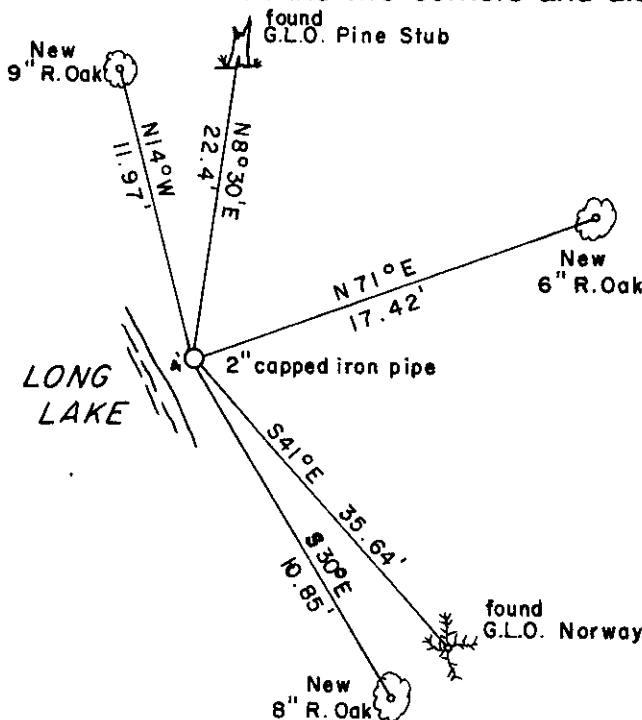
(b) (f) (g) (h) Description of monument found at this corner and if it was accepted, state all evidence (material, testimonial, occupational, plats, records, other monuments) used as a basis for accepting. If not accepted or if nothing was found, state evidence used as basis for establishing location. If reestablished through lost corner proportionate methods, indicate all monuments, distances and directions used to establish.

1863- W. Daugherty established corner at 48.30 ch. east of range line BTs; W. Pine 12", S 59° E 4 lks., Birch 6", N 50° W, 11 lks.

1942- Hal D. Craig, G.L.O. surveyor executed a dependent resurvey and extension survey and states; the point for the meander corner of sec. 19 & 30, on the east shore of Long Lake, as determined from the remains of an original bearing tree, set an iron post, 3' lang, 2" diam., 27" in the ground, for meander corner of sec. 19 & 30, with brass cap. The remains of orig. bt; W. Pine stump, 16", bears S 59° E 4 lks. New BTs; 16" W. Pine, N 8½° E 34 lks., 8" Norway, S 41½° E, 54 lks.

1986- We found G.L.O. iron post with cap in place and Norway BT. S 41½° E 35.64' and G.L.O. W. Pine stub N 8½° E, 22.4' made new BTs; 9" R. Oak, N 14° W, 11.97', 6" R. Oak, N 71° E, 17.42', 8" R. Oak, S 30° E, 10.85'.

(c) (d) (e) Plan view of corner with ties to at least 4 witness monuments. If in disagreement with previously established corner, show the distances between the two corners and also indicate the ties to the disputed corner.



- new bt's. are not blazed or scribed
- distances to 6" iron nails in sides of trees
- magnetic bearings taken with hand held compass
- no scale

(i) I, MICHAEL J. ROMPORTL R.L.S. 1624
 (type or print name) certify that the corner location on this record was determined by me or under my direction and control and that this U.S. Public Land Survey Monument Record is correct and complete to the best of my knowledge and belief.

Michael J. Romportl 4-16-86
 Signature Date
 GENISOT & ASSOCIATES INC.
 1512 EAGLE ST., RHINE, WI.



Index No. 12-3-4

3608190013