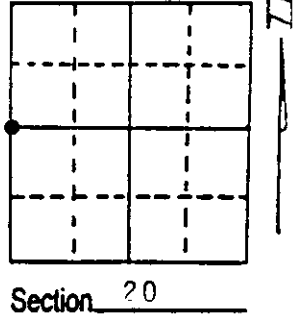


# U.S. PUBLIC LAND SURVEY MONUMENT RECORD

Note: This form is intended and designed to fulfill all requirements of Wisconsin Administrative Code, Chapter A-E 7.08 U.S. Public Land Survey Monument Record (3) (a) (b) (c) (d) (e) (f) (g) (h) (i). An additional sheet may be added if necessary to conform with said requirements.

(a) Corner location: Township 36 North  
 Range 8 East  
 Town/City/Village Crescent  
 County Oneida



(b) (f) (g) (h) Description of monument found at this corner and if it was accepted, state all evidence (material, testimonial, occupational, plats, records, other monuments) used as a basis for accepting. If not accepted or if nothing was found, state evidence used as basis for establishing location. If reestablished through lost corner proportionate methods, indicate all monuments, distances and directions used to establish. Indicate type of monument found or set and sign post.

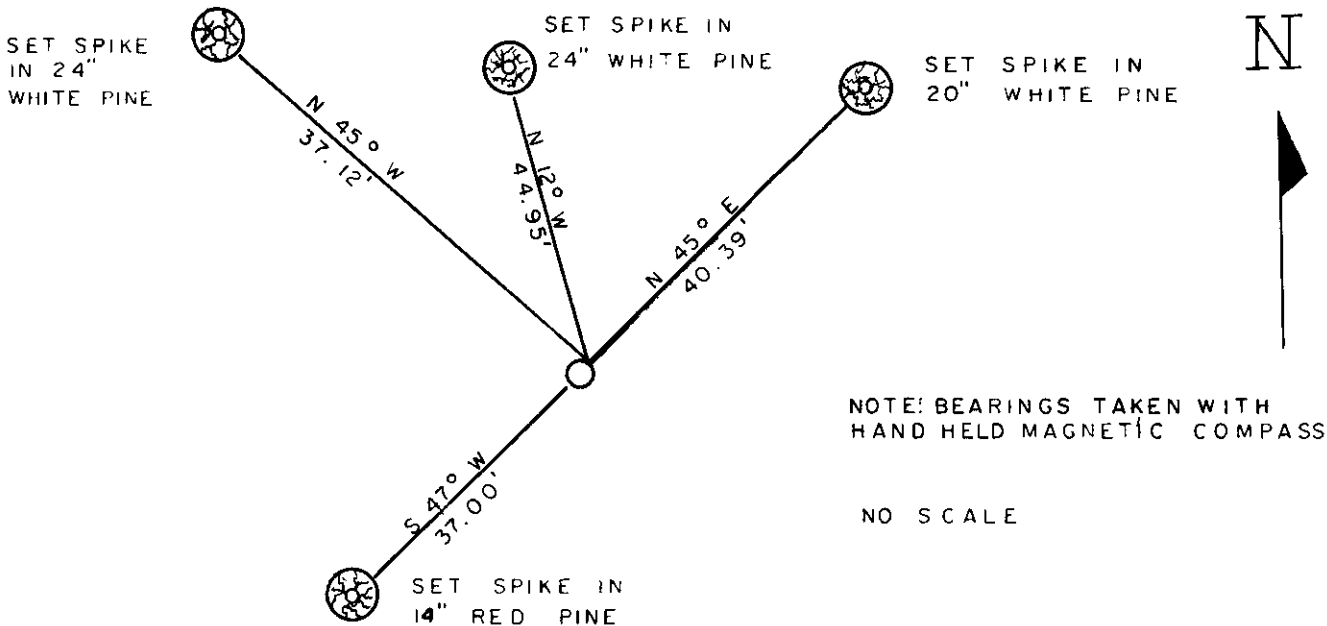
1863-William Daugherty set post 18" Jack Pine S 55 degrees East  
 16 links 6" Maple S 71 degrees West 19 links

1939-GLO (Hal Craig) found 1½" I.P. set 6" diameter concrete monument with brass tablet marked 19/20 12" Norway  
 N 34 degrees East 54 links marked ¼ S 20 BT. 10" White Pine  
 N 76 degrees West 48 links marked ¼ S 19 BT.

1965-Genisot found GLO Monument

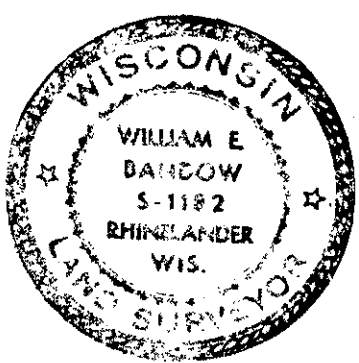
1993-William E. Bandow found GLO Monument and witnessed as shown below

(c) (d) (e) Plan view of corner with ties to at least 4 witness monuments. If in disagreement with previously established corner, show the distances between the two corners and also indicate the ties to the disputed corner.



(i) I, William E. Bandow  
 (type or print name) certify that the corner location on this record was determined by me or under my direction and control and that this U.S. Public Land Survey Monument Record is correct and complete to the best of my knowledge and belief.

William E. Bandow 3-11-97  
 Signature Date



Stamp

3608192000

Index No. P-5

**US PUBLIC LAND SURVEY MONUMENT RECORD**

Per Wis. Admin. Code § A-E 7.08, a U.S. public land survey monument record shall be prepared and filed with the county survey records as part of any land survey within 60 days of setting or accepting the corner, which includes or requires the perpetuation, restoration, or use of a U.S. public land survey corner and when any of the situations in Wis. Admin. Code § A-E 7.08(1)(a), 7.08(1)(b) or 7.08(1)(c) arise.

**3(a) Corner location:**

Found concrete monument with General Land Office brass disc, as noted by Badow in 1993.  
East 1/4 Corner  
Section 19  
Township 36 North  
Range 8 East  
4th Principal Meridian  
Town of Crescent  
Oneida Co., WI

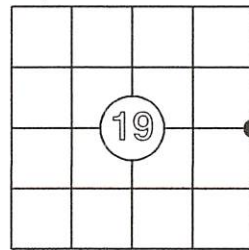
WISCRS:  
N: 147787.79  
E: 233535.74  
N: (Rec) 147787.92  
E: (Rec) 233535.73  
Datum: NAD 83 (2011)  
GNSS Control: WISCORS Network  
GNSS Method: RTK-Direct  
Verification Method: 1,2

The coordinate value, if shown, has been verified by at least one of the following methods: 1) comparison to a previously GNSS determined published value; 2) The value is the average of two or more GNSS observations at markedly different times; 3) one or more distances were measured to the corner from temporary GNSS observed offset locations.

**(b) History of Original Corner Establishment**

Corner Set: Wood Post  
Original Surveyor: Wm. Daugherty  
Date of Survey: July, 1863

Original Bearing Trees:  
Jack Pine, 18" S 55° E, 16 links  
Maple, 6" S 71° W, 19 links



**CORNER ID:**  
3608192000

(b)(f)(g)(h) Description of monument found at this corner and, if it was accepted, state all evidence (material, testimonial, occupational, plats, record, other monuments) used as a basis for establishing location. If re-establishing through lost corner proportionate methods, indicate all monuments, distances and directions used to establish this location. Indicate type of monument and sign post found or set.

This is a continuation of a previous USPLSS Monument Record by Surveyor William Badow (1993). See previous record for additional history on this corner.

1993 to 2/3/2024: Multiple surveyors have accepted and used this corner as the East 1/4 corner of Section 19, as described by Badow. See Oneida County Land Information Online Land Survey Maps for those surveys.

2/3/2024: I found the concrete monument with a General Land Office brass cap, as described by Badow in 1993. It is in very good condition.

(4). I located and made witnesses as shown below.

(c)(d)(e) Plan view of corner with ties to at least 4 witness monuments. If in disagreement with previously established corner, show the distances between the two corners and also indicate the ties to the disputed.

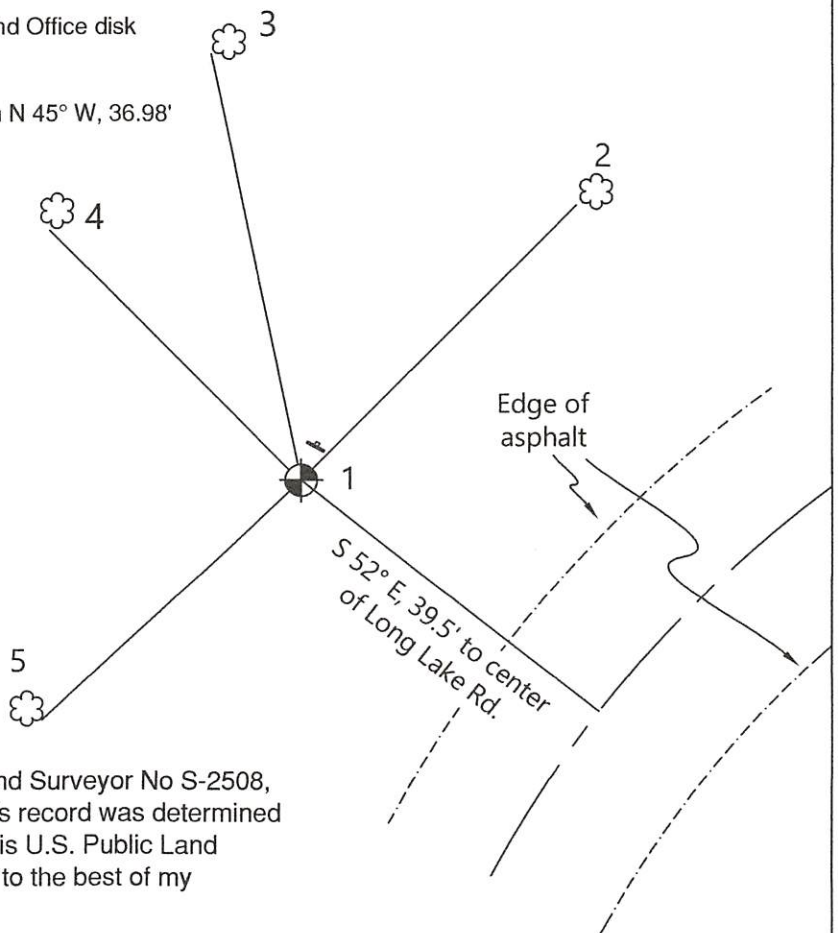
NOTE: Unless noted, all nails set by Badow have grown over. I set new 6" spikes in the same tree.

1. Found concrete monument with brass General Land Office disk
  2. Set nail in 27" white pine, N 45° E, 40.65'
  3. Set nail in 27" white pine, N 12° W, 45.44'
  4. Set nail in 24" white pine (dead), lower blaze open N 45° W, 36.98'
  5. Found nail in 18" red pine, S 47° W, 37.00'
- There is a 1 1/4" iron pipe, 2' tall, 0.6' south  
Plastic, white sign post, NE 0.5'



Bearings: Magnetic

Scale: 1"=20'



(i) I, Anthony R. Jones, Wisconsin Professional Land Surveyor No S-2508, hereby certify that the corner location shown on this record was determined by me, or under my direction or control, and that this U.S. Public Land Survey Monument Record is correct and complete to the best of my knowledge and belief.

*Anthony R. Jones* 2/3/24  
Anthony R. Jones, PLS No. S-2508

Date

Index No. \_\_\_\_\_