

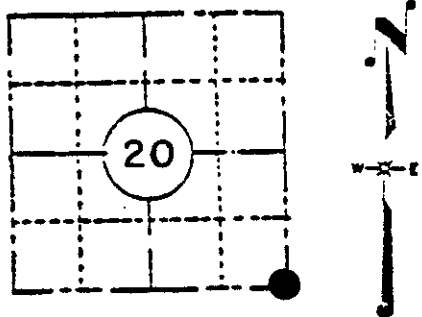
Stock No. 26273

U. S. PUBLIC LAND SURVEY MONUMENT RECORD

INSTRUCTIONS:

This record shall show the location of the corner and shall include all of the following nine elements (a through i).

- (a) Identify the corner by reference to the U.S. public land survey system.
**SE. COR. SECTION 20,
 TOWNSHIP 36 NORTH,
 RANGE 8 EAST,
 ONEIDA COUNTY, WIS.**



LOCATION SKETCH
 (Location of landmark indicated by '●')

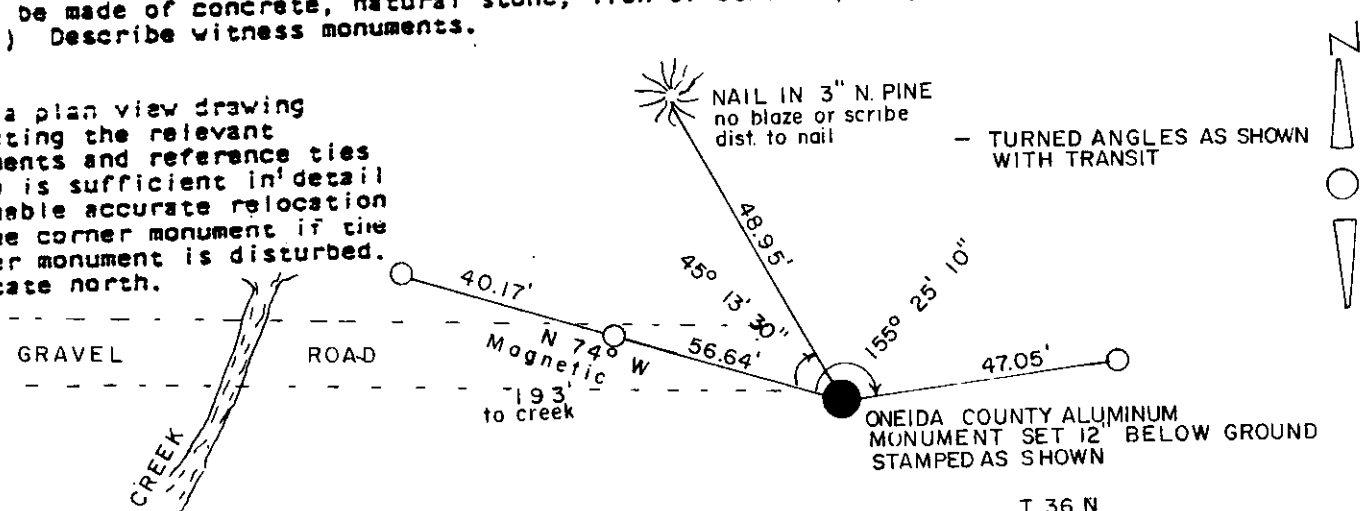
- July 15, 1863 orig. cor. set by W.D. Daugherty 80.00ch from S.E. cor. 29 L.T.s Aspen 15 N 78 E 321k Aspen 6 S 71 W 418
- 1890 E.F. Dorr at corner made new L.T.s pine stump 7 N 2 E 25, pine stump 10 S 16 W 253/4, went north and set 1/2 cor at 27.32ch.
- 1914 D.H. Vaughan at corner and run west to 1/2 cor. 7.33ch; also north to 1/2 cor. 11.41ch.
- 1939 U.S. General Land Office executed a resurvey of the area states in their notes; at S.E. cor, Sec 2152.61 ch. M.C. on west side of Lake Emma ... 53.50 leave marsh... 53.30 fence to the south, 78.62 the point for the cor of secs. 20,21,28&29 which is marked by an iron pin, 1" in dia. at the corner of fences D., W., & S. said by John Hacker and adjoining land owner to be recognized cor. for these sections. Set a concrete monument with brass cap in the ground. No accessories available for witnesses.....thence N 16° 49' W bet. sec. 20&21 3.70 creek; 9.90 N.E. cor. Hackers house bears west 47lks.; 11.60 int. barn; 27.47 1/2 corner. Also from the S. E. cor. sec. 20 S 39° 41' W 2.82 creek; 6.68 fence N & S; 19.50 end of fence along road; 19.85 a graded road; 39.54 1/2 cor.

- (b) Describe any record evidence, monument evidence, occupational evidence, testimonial evidence or any other material evidence you considered, and whether the monument was found or placed.

At this corner I could not find the G.L.O. monument so I ran east to the M.C. on the west shore of Lake Emma and intended to set the cor. from G.L.O. data with a index correction however I found an error in measurement to the M.C. so I set a Oneida County Aluminum monument at G.L.O. distances from the E 1/2 & S 1/2 corners of section 20. The area around the corner has been a cult. field and a road has been cut in from the west so apparently the corner was removed. Roger Kuczmariski a local land owner cannot remember ever seeing the corner.

- (c) In the plan view drawing below, provide reference ties to at least 4 witness monuments, or, if the location is within a municipality, to at least 2 witness monuments. (Witness monuments shall be made of concrete, natural stone, iron or other equally durable material, except wood.) Describe witness monuments.

- (d) Show a plan view drawing depicting the relevant monuments and reference ties which is sufficient in detail to enable accurate relocation of the corner monument if the corner monument is disturbed. Indicate north.



T 36 N
 R 8 E
 S 20 | S 21
 S 29 | S 28
 1983

○ SET 1" x 24" IRON PIPE FLUSH

3608200000

R-9

(e) Describe any material discrepancy between the location of the corner as restored or reestablished and the location of that corner as previously restored or reestablished by distance and direction. Show the discrepancy on the plan view drawing under (d), above. Show the distances between the corner as previously restored or reestablished and (1) the corner as restored or reestablished, and (2) to at least 2 of the witness monuments shown on the drawing in (d), above.

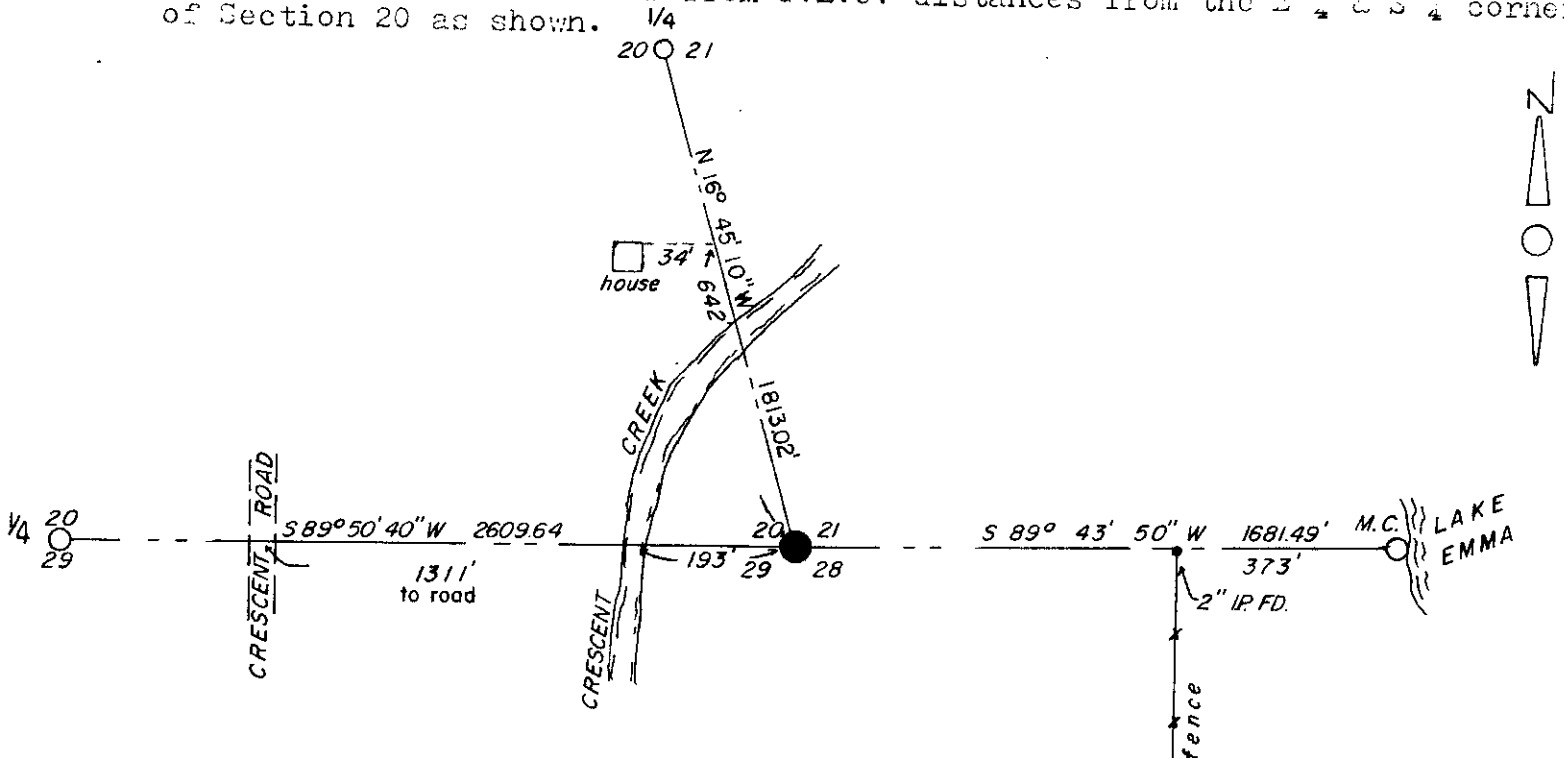
In reestablishing this corner I found a error in U.L.C. measurement to the M.C. on the west shore of Lake Emma. U.L.C. had a distance of 1716.66' versus mine of 1681.49', shorter by 35.17'. I determined that the error was in that distance due to the calls by U.L.C. of Hackers house, the creek and the road call west as shown in the sketch below. It appears the U.L.C. had a 1/2 chain error.

(f) Was the corner restored through acceptance of (1) an obliterated evidence location, or, (2) a found perpetuated location?

Obliterated evidence location

(g&h) Was the corner reestablished through lost corner proportionate methods? If so, show the method, including the directions and distances to other public land survey corners used as evidence or used for proportioning in determining the corner location?

I reestablished the corner from U.L.C. distances from the E 1/4 & S 1/4 corners of Section 20 as shown.



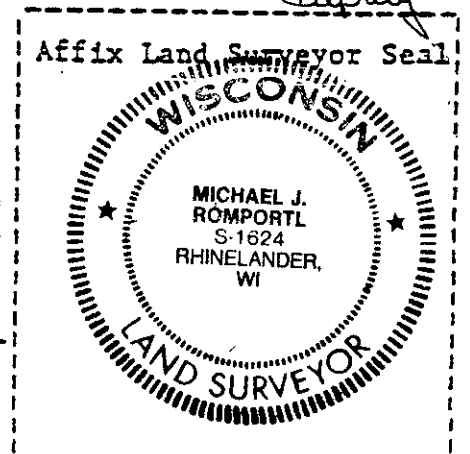
Compared with all record data and accepted as correct.

Robert H. Winat
 Robert H. Winat, Oneida Co. Surv.
 9 November 1983

REGISTERS OFFICE }
 Oneida County, Wis. }

Received for Record the 15 day of
March A.D. 19 84 at
11:30 o'clock A. M. and recorded in
 Vol. _____ on page _____

Doris Verage Kuehn Register
Cynthia A. Pires Deputy



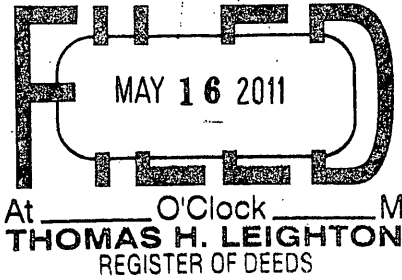
(i) I, Michael J. Romportl
 (type or print name) certify that the corner location shown on this record was determined by me or under my direction and control and that this U.S. Public Land Survey Monument Record is correct and complete to the best of my knowledge and belief.

Michael J. Romportl 7-22-83
 Signature Date
 Michael J. Romportl R.L.C. 1624
 Genisot & Associates Inc.
 Rhinelander, Wis. 54501

U.S. PUBLIC LAND SURVEY MONUMENT RECORD

Note: This form is intended and designed to fulfill all requirements of the Wisconsin Administrative Code, Chapter A-E 7.08 U.S. Public Land Monument Record (3)(a)(b)(c)(d)(e)(f)(g)(h)(i). An additional sheet may be added if necessary to conform with said requirements.

REGISTER OF DEEDS OFFICE
ONEIDA COUNTY, WIS.



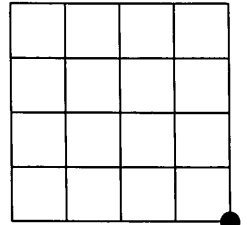
(a) CORNER LOCATION:

Southeast corner of Section 20
Township 36 North
Range 8 East
Town of Crescent
County of Oneida
Wisconsin

COORDINATES

North: 145221.439
East: 238878.512
Control Station: OC 604
Latitude: 45° 34' 38.16683" N
Longitude: 89° 29' 25.83263" W
Datum: NAD-83 (1991)
Method: RTK Direct

At _____ O'Clock _____ M
THOMAS H. LEIGHTON
REGISTER OF DEEDS



(b) HISTORY OF ORIGINAL CORNER ESTABLISHMENT

Original Surveyor: William E. Daugherty; Set post corner to Section
Date of Survey: Commenced - July 6th, 1863
Completed - July 16th, 1863

Original B.T.'S:

15" Aspen; N 78° E; 32 links
6" Aspen; S 21° W; 418 links

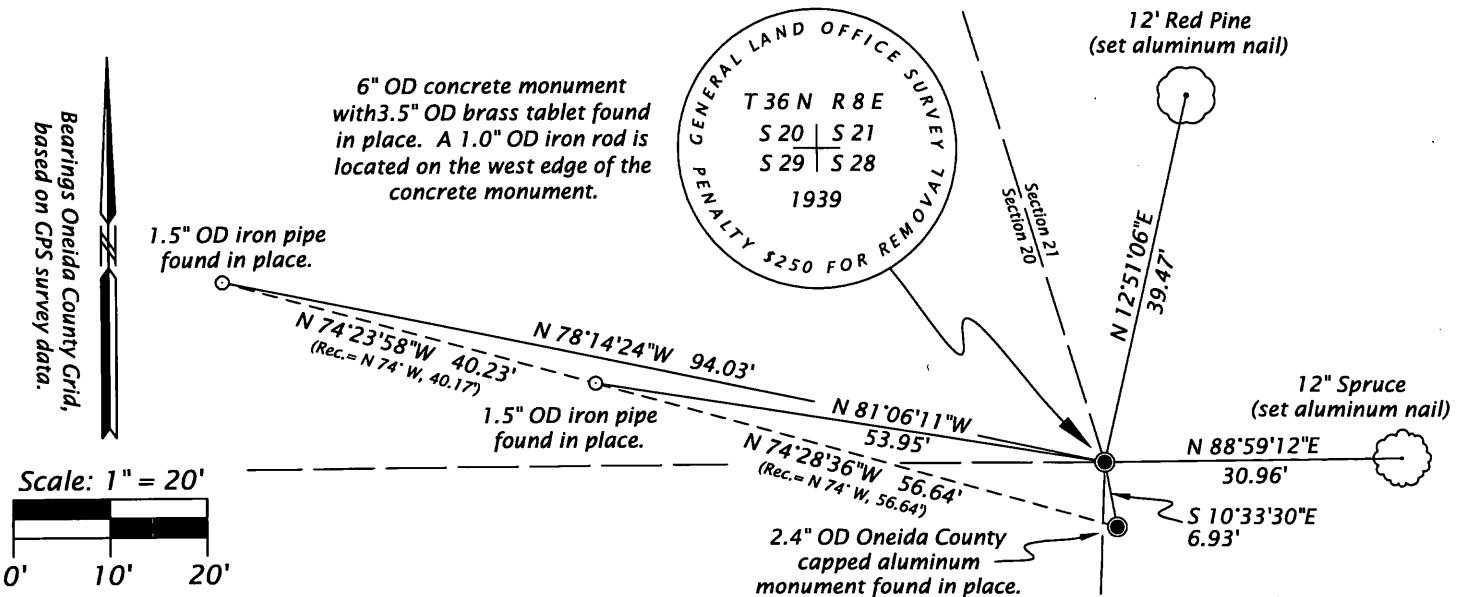
SECTION 20

(f)(g)(h) DESCRIPTION OF MONUMENT FOUND AT THIS CORNER AND IF IT WAS ACCEPTED, STATE ALL EVIDENCE (MATERIAL, TESTIMONIAL, OCCUPATIONAL, PLATS, RECORDS, OTHER MONUMENTS) USED AS A BASIS FOR ESTABLISHING LOCATION. IF NOT ACCEPTED OF IF NOTHING WAS FOUND, STATE EVIDENCE USED AS BASIS FOR ESTABLISHING LOCATION. IF REESTABLISHED THROUGH LOST CORNER PROPORTIONATE METHODS, INDICATE ALL MONUMENTS, DISTANCES AND DIRECTIONS USED TO ESTABLISH. INDICATE TYPE OF MONUMENT AND SIGN POST FOUND OR SET.

(SEE MORE HISTORY ON REVERSE)

02/22/2011 - I, James D. Rein, Registered Land Surveyor No. S-1234, found a 6" OD concrete monument with 3.5" OD G.L.O. brass tablet in place, and also found Romportl's 2.4" dia. Oneida County aluminum capped monument in place. I accepted the G.L.O. concrete monument as that placed in 1939, however, I also believe there was a 1/2 chain error in the 1939 G.L.O. resurvey from the Meander Corner to the east of here, that M.C. lying on the westerly shore of Emma Lake. I made two (2) new bearing trees and referenced to two (2) existing iron pipe from the 1983 U.S.P.L.S.M.R., as shown in sketch below.

(c)(d)(e) PLAN VIEW OF CORNER WITH TIES TO AT LEAST 4 WITNESS MONUMENTS. IF IN DISAGREEMENT WITH PREVIOUSLY ESTABLISHED CORNER, SHOW THE DISTANCE BETWEEN THE TWO CORNERS AND ALSO INDICATE THE TIES TO THE DISPUTED CORNER.



(i) I, JAMES D. REIN, REGISTERED LAND SURVEYOR NO. S-1234 HEREBY CERTIFY THAT THE CORNER LOCATION ON THIS RECORD WAS DETERMINED BY ME OR UNDER MY DIRECTION AND CONTROL AND THAT THIS U.S. PUBLIC LAND SURVEY MONUMENT RECORD IS CORRECT AND COMPLETE TO THE BEST OF MY KNOWLEDGE AND BELIEF.

SIGNATURE

DATE

4-23-11

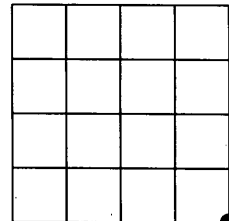


0808200000

INDEX NO. R 9

(a) CORNER LOCATION:

Southeast corner of Section 20
Township 36 North
Range 8 East
Town of Crescent
County of Oneida
Wisconsin



SECTION 20

(CONTINUED HISTORY)

01/08/1890 - B. F. Dorr, County Surveyor, at corner and made new bearing trees; 7" Pine stump, N 2° E, 25 links; and 10" Pine stump S 16° W, 25 ¾ links. See Door/Vaughn book, page 68, dated 01/20/1891, on file with the Oneida County Surveyor's Office.

07/20/1914 - D. H. Vaughn, County Surveyor, found Dorr's corner post and ran west. Notes that he remarked all of Dorr's bearing trees where not plain and set iron monuments. See Door/Vaughn book, page 120, on file with the Oneida County Surveyor's Office.

09/18/1939 - 10/14/1939 - U. S. General Land Office Dependent Resurvey of the area states the corner is marked by a 1" dia. iron pin with fences east, west, and south, and said to be the recognized corner by adjoining land owners. They set a 6" dia. x 24" long concrete monument with 3.5" dia. brass tablet for corner. No accessories available.

07/22/1983 - Michael J. Romportl, Registered Land Surveyor, was unable to find the G.L.O. concrete monument. He determined a half chain error in the G.L.O. survey from the M. C. to the east and set an Oneida County capped aluminum monument by distance/distance method from the G.L.O. East quarter corner and South quarter corner, Section 20, and made reference ties. See U.S.P.L.S. Monument Record, recorded March 15, 1984.

04/30/1997 - Aero-Metric, Inc., found a U.S. Land Office Brass Cap while performing G.P.S. control observations for Oneida County G.P.S. Coordinate Grid.

05/20/1998 - Russel F. Brown, Registered Land Surveyor, notes the corner as a "Found Oneida County Monument" on a survey filed with the Oneida County Surveyor's Office as Map No. C1448.