

State of Wisconsin

County of Oneida } ss.

CERTIFIED LAND CORNER RESTORATION
U.S. PUBLIC LAND SURVEY MONUMENT RECORD

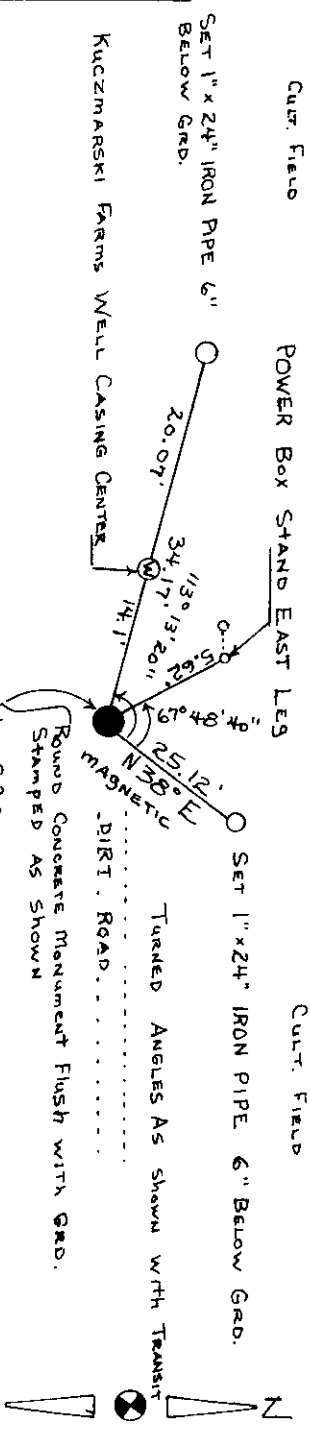
Index No. R-7

History of original corner establishment:
- July 15, 1863 Wm. Daugherty set 1/4 post 40.16 ch. from section corners B.T.s Aspen 7 S 50 W 641ks. Y. Pine 25 N 56 E 2891ks.

I Michael J. Romporkl do hereby- 1939 U.S. General Land Office executed a resurvey of the area and states that the point for the certify that on the 20 day of May, 1985, I found original position for the corner. This point is along side of the best available evidence of the evidence of the South 1/4 Cor. corner of Section 20 Township 36 North, Range 8 East, Fourth Principal Meridian, 1890 B. F. Dorr at corner B.T.s Pine 12 N 53 W 20 1/2; Pine 20 S 18 W 33 1/2 -1914 D.H. Vaughan recovered Dorr's B.T.s then a stump Description of corner evidence found:
At this corner I found the concrete monument. The fences have been removed.

Resident witnesses:

Description of monument and accessories I established to perpetuate the original location of this corner.



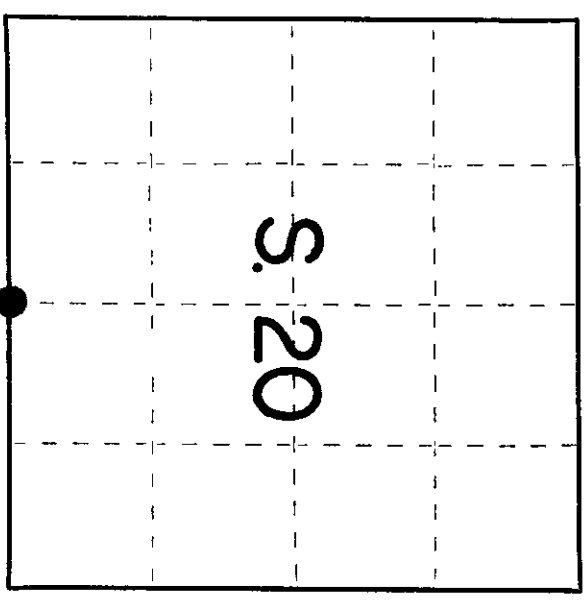
Dated at Rhinelanders Wis., this 6 day of July, 1985

Signature see back Title Registered Land Surveyor Registration No. 1624
(County Surveyor, Registered Land Surveyor, or other duly authorized official)

Office of Register of Deeds, County of Oneida
Instrument was filed in this office for record on the 15 day of January, 1984
at 11:30 o'clock A.M.

Signature of Register of Deeds: Denise Vonneg
Signature of Surveyor: Robert H. Minat

By: Signature of Deputy: Robert H. Minat, Oneida Co. Surv. 15 March 1984



● = Corner monument restored.

3608200020

(e) Describe any material discrepancy between the location of the corner as restored or reestablished and the location of that corner as previously restored or reestablished by distance and direction. Show the discrepancy on the plan view drawing under (d), above. Show the distances between the corner as previously restored or reestablished and (1) the corner as restored or reestablished, and (2) to at least 2 of the witness monuments shown on the drawing in (d), above.

none

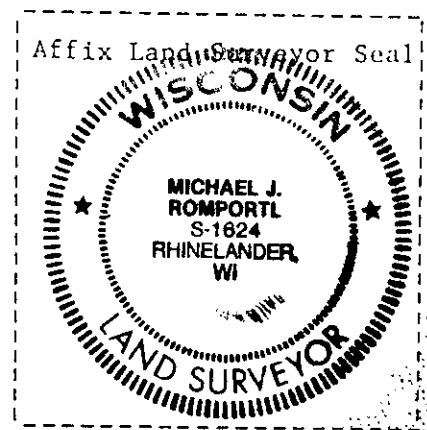
(f) Was the corner restored through acceptance of (1) an obliterated evidence location, or, (2) a found perpetuated location?

a found perpetuated location

(g&h) Was the corner reestablished through lost corner proportionate methods? If so, show the method, including the directions and distances to other public land survey corners used as evidence or used for proportioning in determining the corner location?

no

(i) Michael J. Romportl
(type or print name) certify that the corner location shown on this record was determined by me or under my direction and control and that this U.S. Public Land Survey Monument Record is correct and complete to the best of my knowledge and belief.



Michael J. Romportl
Signature

6-8-83
Date

Michael J. Romportl R.L.S. 1624
Genisot & Associates Inc.
Rhinelander, Wis.