

Stock No. 26273

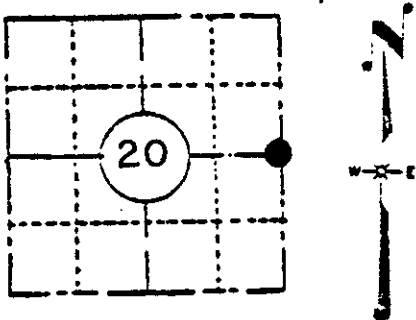
U. S. PUBLIC LAND SURVEY MONUMENT RECORD

INSTRUCTIONS :

This record shall show the location of the corner and shall include all of the following nine elements (a through i).

(a) Identify the corner by reference to the U.S. public land survey system.

**E 1/4, SECTION 20,
TOWNSHIP 36 NORTH,
RANGE 8 EAST
ONEIDA COUNTY, WIS.**



LOCATION SKETCH

(Location of landmark indicated by "●")

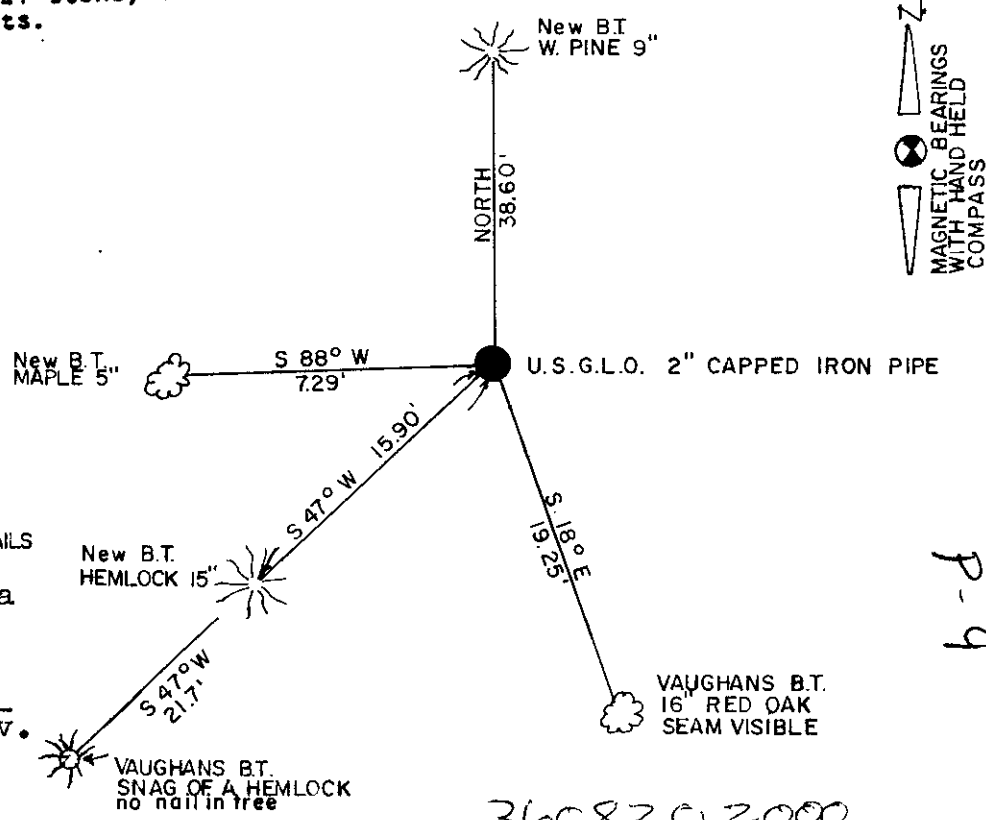
- 1821, 13, 1 1/2, orig. cor. set by W. L. Daugherty 20.00ch. from D.L. cor. D.L.s Birch S 51 E 17lks; Sugar 10 N 47 W 14lks
- 1890 D. F. Dorr at corner, B.T.s Hemlock 9 S 42 W 22 hemlock 6 N 26 W 5 1/2
- 1914 D.H. Vaughan found stump of Dorr's S.W. D.F. ok set post & new B.T. hemlock 12 S 50 W 33
- 1924 C.D. Vaughan states the 1/4 cor. set by Dorr from orig. , found D.H. Vaughans L.F. ok and made new B.T. Oak 6 S 18 E 30
- 1939 U.S. General Land office executed a resurvey of the area and states that at 27.47ch. from the S.E. S. 20 they found the point for the 1/4 cor. marked by the remains of a rotted stake marked with a scribe "13" along side a fence post. This point for the 1/4 cor. was accepted after interviewing several old men that knew about the cor. as estab. by Dorr. Dorr accepted a point for the meander cor. of sec. 20 & 21 and estab. the 1/4 cor. by proportion on the true line. These lines have been recognized by the adjoining land owners and improvements have been built to them. D.H. Vaughan later found Dorr's location for 1/4 cor. and marked new bearing trees which were used to identify the point for the cor.

(b) Describe any record evidence, monument evidence, occupational evidence, testimonial evidence or any other material evidence you considered, and whether the monument was found or placed.

- U.S.G.L.O. con't, G.L.O. set a concrete monument with brass tablet in the ground from which Vaughans B.T.s are; Red Oak 12 S 18 E 30lks., Hemlock 16 S 47 1/2 W 33lks.; and a local B.T. dead Hemlock 12 S 85 1/2 W 46lks.
- At this corner I found a U.S.G.L.O. 2" capped iron pipe monument 8" above grd. with a 1 1/2" gaurd pipe alongside cor. and the red oak and hemlock B.T.s as called for by G.L.O. and accepted this poistion for the 1/4 corner.

(c) In the plan view drawing below, provide reference ties to at least 4 witness monuments, or, if the location is within a municipality, to at least 2 witness monuments. (Witness monuments shall be made of concrete, natural stone, iron or other equally durable material, except wood.) Describe witness monuments.

(d) Show a plan view drawing depicting the relevant monuments and reference ties which is sufficient in detail to enable accurate relocation of the corner monument if the corner monument is disturbed. Indicate north.



- SCRIBED & BLAZED NEW B.T.s AS SHOWN



- DISTANCES ARE MEASURED TO IRON NAILS IN APPROX CENTER OF TREES Compared with all record data and accepted as correct.

Robert H. Winat
Robert H. Winat, Oneida Co. Surv.
9 November 1983



P-9

360820 2000

(e) Describe any material discrepancy between the location of the corner as restored or reestablished and the location of that corner as previously restored or reestablished by distance and direction. Show the discrepancy on the plan view drawing under (d), above. Show the distances between the corner as previously restored or reestablished and (1) the corner as restored or reestablished, and (2) to at least 2 of the witness monuments shown on the drawing in (d), above.

none

(f) Was the corner restored through acceptance of (1) an obliterated evidence location, or, (2) a found perpetuated location?

a found perpetuated location

(g&h) Was the corner reestablished through lost corner proportionate methods? If so, show the method, including the directions and distances to other public land survey corners used as evidence or used for proportioning in determining the corner location?

no

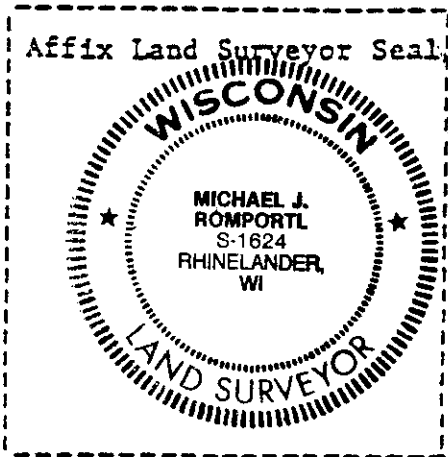
REGISTERS OFFICE }
Oneida County, Wis. }

Received for Record the 15 day of
March A.D. 1984 at
11:30 o'clock A. M. and recorded in

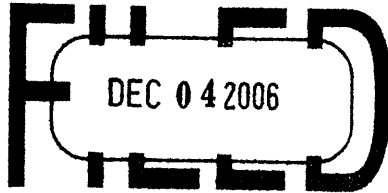
Vol. _____ on page _____
Doris Verage Kuehn
Register
Cynthia A. Pitts
Deputy

(i) I, Michael J. Romportl
(type or print name) certify that the corner location shown
on this record was determined by me or under my direction and
control and that this U.S. Public Land Survey Monument Record
is correct and complete to the best of my knowledge and belief.

Michael J. Romportl 7-11-83
Signature Date
Michael J. Romportl R.L.S. 1624
Genisot & Associates Inc.
Rhineland, Wis.



REGISTER OF DEEDS OFFICE
ONEIDA COUNTY, WIS.



At _____ O'Clock _____ M

This form is intended to fulfill the requirements of Chapter T.M.S. 10.01, Wisconsin Administrative Code. Use the reverse side of this form for continuation.

THOMAS H. LEIGHTON
REGISTER OF DEEDS

U.S. PUBLIC LAND SURVEY MONUMENT LOCATION RECORD

Recorders Data

USPLS CORNER: WEST 1/4 SECTION: 21 TOWNSHIP: 36 NORTH RANGE: 8 EAST
 NAME OF WATERWAY FOR M.C. CORNER: N/A SECTION LINE: N/A
 (CITY)(VILLAGE)(TOWN) OF: CRESCENT COUNTY OF: ONEIDA

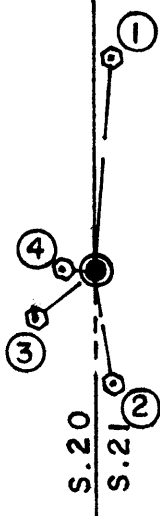
Description of monument found or placed and all other evidence used as the basis for monument location; including monuments and measurements required if the corner location was reestablished by lost corner proportionate methods. Also indicate name of the original surveyor, original survey date and the corner monument, bearing trees, witness or other reference monuments established, including measured bearing and distance ties, from available survey records.

THIS CORNER REREFERENCED AS ONLY TWO(2) RECORD BTS FOUND SATISFACTORY FOR PERPETUATION USAGE.

In July 1863, William E. Daugherty/GLO set a wood post as original corner and noted OBTs: an 8" Bw S31°E 17 links and a 10" Sugar Maple N47°W 14 links; all now obliterated. In 1890, B.F. Dorr at corner and noted BTs: 9" Hemlock S42°E and a 6" Hemlock N26°W 5.5 links; both now obliterated. In 1914, D.H. Vaughan found Dorrs SW BT stump, set a new post and noted new 12" Hemlock BT S50°W 33 links; post now obliterated. In 1924, C.D. Vaughan found D.H. Vaughan SW BT OK and noted a new 6" Oak BT S18°E 30 links. In 1939 during a Resurvey, GLO accepted a position marked by remains of a 1/4S scribed rotted stake at a fence post, that was confirmed as previously set by Dorr by proportion and set a brass capped monument with noted BTs: a 12" Or S18°E 30 links, which is now a 15" high 20" rotted sawed off stump, a 16" Hemlock S47.5°W 33 links and a local 12" dead Hemlock S85.5°W 46 links. In November 1983, per USPLS Location Record filed in Oneida County records, Robert H. Winat/RLS 1040 found a 2" iron pipe with GLO brass cap 8" above grade with a 1.5" dia. guard pipe alongside, the GLO noted SW Hemlock, now gone, and SE Oak and noted BTs: a 5" Mr S88°W 7.29', found OK, a 15" Hemlock S47°W 15.90', found OK, a 9" Pw North 38.60', now nearly dead and a 16" Or S18°E 19.25', now a sawed off stump.

On June 15, 2006 I found a 1.5" dia. galvanized iron pipe with 2.5" dia. stamped GLO brass cap 5" above grade, with a 1.25" dia. x 18" high galvanized iron pipe along SSW side and a steel T post 44" high West 3", and noted BTs below. I set a standard white poly "T" marker post at West side of GLO monument. There were no direct witnesses.

Plan view map of monument location with bearing and distance ties to a minimum of four(4) described witness or reference monuments of concrete, natural stone, iron, live bearing trees or equivalent material. If applicable, also show a minimum of two(2) bearing and distance ties to any other monument found and not accepted; including the bearing and distance from the accepted monument.



SCALE: 1" = 40'

Unless otherwise indicated, all bearing tree ties are to a .25" dia. by 2.5" long PK nail with a 1.25" dia. steel washer driven into unblazed right face and a .25" dia. by 2.5" long PK nail with a 2" dia. steel washer stamped BT is also driven into unblazed face of bearing tree at DBH; the basis for measured bearings is by compass to nearest degree and all tie distances are measured horizontal by steel tape corrected to nearest 1/100th feet at standard temperature of 68° F.

WITNESS MONUMENT TIES:

- ① Older 15" Pw BT with plain upper & lower blaze scars N04°E 51.55'; I nailed a standard BT sign to upper North face, 21' South of center of E/W blacktop road; no BT record.
- ② New 14" Mr BT S10°E 23.77'.
- ③ Old 15" Hemlock BT with plain upper & lower blaze scars S52°W 15.93' to 60d spike in right face.
- ④ Old 7.5" Mr with plain upper & lower blaze scars N88°W 7.27' to 60d spike in right face.

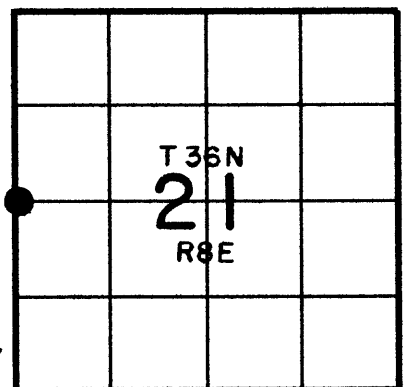
RLS SEAL:



LAND SURVEYOR CERTIFICATE:

I, William C. Rohde, hereby certify that I am duly licensed as a Professional Land Surveyor in the State of Wisconsin; that this USPLS monument location was determined by me and/or under my direct supervision and control; and that this U.S. Public Land Survey Monument Location Record is true and correct to the best of my knowledge and belief.

Signed: *William C. Rohde*
William C. Rohde RLS 841

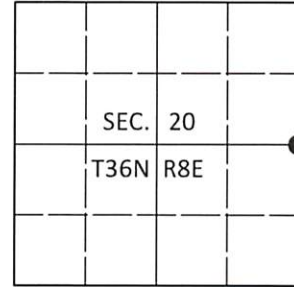


U.S. PUBLIC LAND SURVEY MONUMENT RECORD

Note: This form is intended and designed to fulfill all requirements of Wisconsin Administrative Code, Chapter A-E 7.08 U.S. Public Land Survey Monument Record (3)(a-i).

(a) CORNER LOCATION
 1/4 Cor. of Secs. 20 & 21
 Township 36 North
 Range 8 East of the 4th P.M.
 Town of Crescent
 County of Oneida

WISCRS - Oneida County
 N: 146,949.83 USft
 E: 238,355.01 USft
 Datum: NAD 83(2011)
 GNSS Method: RTN - Offset
 GNSS Control: WISCORS VRS



(b) HISTORY OF ORIGINAL CORNER ESTABLISHMENT

Original Surveyor: _____ Original Accessories: _____
 Date of Survey Commenced: _____ See previous monument record(s)
 Completed: _____

(b)(f)(g)(h) Description of monument found at this corner and if it was accepted, state all evidence (material, testimonial, occupational, plats, records, other monuments) used as a basis for accepting. If not accepted or if nothing was found, state evidence used as basis for establishing location. If re-established through lost corner proportionate methods, indicate all monuments, distances and directions used to establish. Indicate type of monument and sign post found or set.

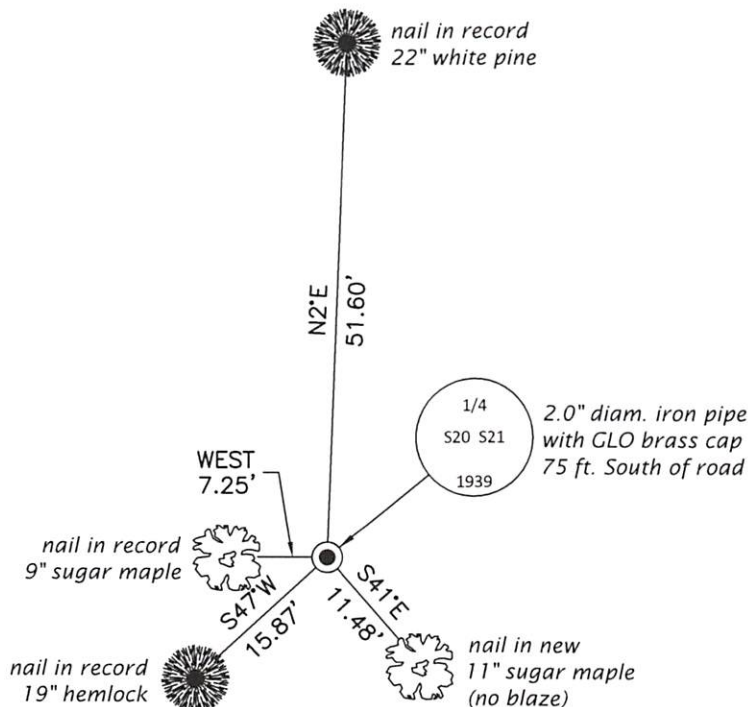
This is a perpetuation of the following monument record(s) that comprise a complete history of the corner:

Nov. 20, 2006: USPLS Monument Record No. 3608202000 by William C. Rohde, PLS

Oct. 3, 2020: I found and accepted the record monument, a 2.0" diam. iron pipe with a 2.5" diam. GLO brass cap projecting 6" above the ground surface. A 1.7" diam. iron pipe is adjacent to the monument. The record bearing tree at S10°E (#2) has been cut. I found or established accessories as shown below. I found a white vinyl sign post adjacent to the SW side of the monument.

The coordinate value shown has been verified by at least one of the following methods: 1) comparison to a previously GPS determined published value; 2) the value is the average of two or more GPS observations at a markedly different time; 3) one or more distances were measured back to the GPS observed corner from temporary GPS observed offset locations.

(c)(d)(e) Plan view of corner with ties to at least 4 witness monuments. If in disagreement with previously established corner, show the distances between the two corners and also indicate the ties to the disputed.



REGISTER OF DEEDS OFFICE
 ONEIDA COUNTY
 FILED

JAN 13 2021

KYLE J. FRANSON
 REGISTER OF DEEDS

(i) I, Jeffrey W. Austin, Professional Land Surveyor No. S-1885, hereby certify that the corner location on this record was determined by me or under my direction and control and that this U.S. Public Land Survey Monument Record is correct and complete to the best of my knowledge and belief.

 Signature Date 15 DEC 2020