

At _____ O'Clock _____ M

THOMAS H. LEIGHTON
REGISTER OF DEEDS

This form is intended to fulfill the requirements of Chapter A-Er.08 (3)(a) and (b) of the Public Land Survey Monument Location Record, Wisconsin Administrative Code. Use the reverse side of form for continuation.

U.S. PUBLIC LAND SURVEY MONUMENT LOCATION RECORD

Recorders Data

USPLS CORNER: SOUTH WITNESS MC SECTION: 21 TOWNSHIP: 36 NORTH RANGE: 8 EAST

NAME OF WATERWAY FOR M.C. CORNER : CRESCENT LAKE SECTION LINE: WEST

(CITY)(VILLAGE)(TOWN) OF: CRESCENT COUNTY OF: ONEIDA

Description of monument found or placed and all other evidence used as the basis for monument location; including monuments and measurements required if the corner location was reestablished by lost corner proportionate methods. Also indicate name of the original surveyor, original survey date and the corner monument, bearing trees, witness or other reference monuments established, including measured bearing and distance ties, from available survey records.

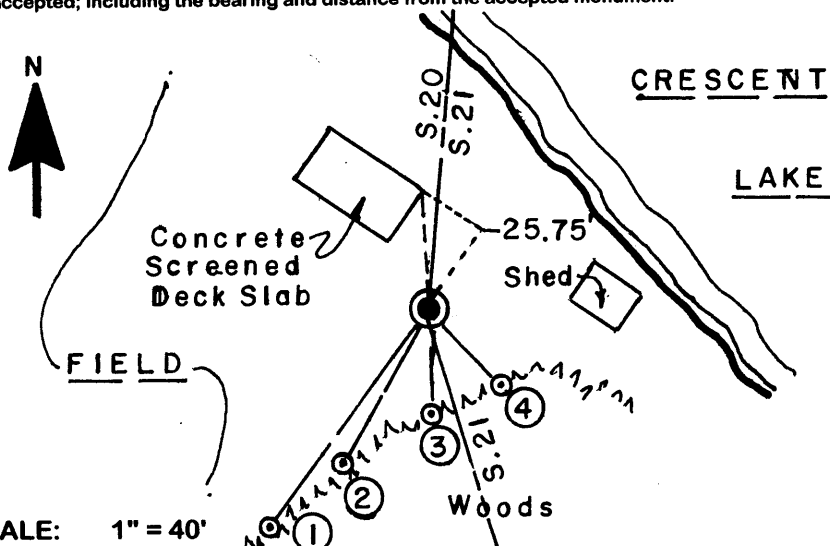
In July 1863, William E. Daugherty/GLO set a wood post as original MC and noted OBTs: a 7" Bw S06°W 12 links and an 8" Hemlock S34°E 18 links; all now obliterated.

In September/October 1939, during a GLO Resurvey, Hal D. Craig, established this Witness MC location and set a 6" dia. x 24" long concrete monument, 22 inches into the ground, with a 3.5" dia. GLO brass tablet imbedded in top in a cleared field 1 chain South of Crescent Lake shoreline, and noted new blazed and scribed BTs: a 6" Mr S77°E 152 links and a 12" Mr S46°W 250 links; both now obliterated. See Pages 10 and 11 of GLO field notes filed as L-863L in Oneida County survey records.

In November 1949, Forrest R. Wincentsen/RLS 155, notes a GLO monument at this Witness MC per Page 63 of Wincentsen Book 1 filed in Oneida County survey records. In December 1950, he also notes this Witness MC location per his Plat of Survey filed as B-649 in Oneida County survey records. In October, 1962, Joseph C. Kirby/RLS 253, notes a GLO monument at this Witness MC per his Plat of Survey filed as B-676 in Oneida County survey records.

On June 15, 2006 I found the 6" dia. GLO concrete monument with fractured top and brass tablet missing flush with existing open field grade and I drove a 3/8" dia. x 2.75" long spike with 1" dia. cap embossed "Survey Mark" into old brass tablet stem hole in top of the concrete monument which I painted fluorescent orange. Corner falls S65°W 46'+/- from the Crescent Lake shoreline bearing N40°W+/- . There were no direct witnesses.

Plan view map of monument location with bearing and distance ties to a minimum of four(4) described witness or reference monuments of concrete, natural stone, iron, live bearing trees or equivalent material. If applicable, also show a minimum of two(2) bearing and distance ties to any other monument found and not accepted; including the bearing and distance from the accepted monument.



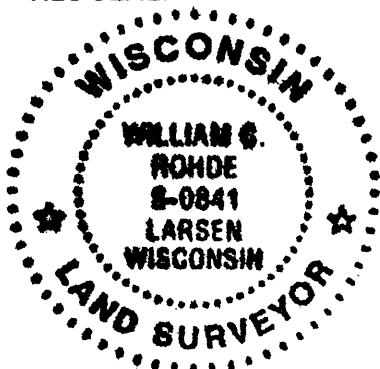
WITNESS MONUMENT TIES:

- ① 5/8" dia. x 24" rebar set flush S35°W 56.30' at edge of planted conifers bearing S65°W +/- along the SW edge of open field slope down to the lakeshore.
- ② Same set S30°W 35.77'.
- ③ Same set South 22.30" on North side of standard white poly 'T' post set.
- ④ Same set S46°E 22.10'.

SCALE: 1" = 40'

Unless otherwise indicated, all bearing tree ties are to a .25" dia. by 2.5" long PK nail with a 1.25" dia. steel washer driven into unblazed right face and a .25" dia. by 2.5" long PK nail with a 2" dia. steel washer stamped BT is also driven into unblazed face of bearing tree at DBH; the basis for measured bearings is by compass to nearest degree and all tie distances are measured horizontal by steel tape corrected to nearest 1/100th feet at standard temperature of 68° F.

RLS SEAL:



LAND SURVEYOR CERTIFICATE:

I, William C. Rohde, hereby certify that I am duly licensed as a Professional Land Surveyor in the State of Wisconsin; that this USPLS monument location was determined by me and/or under my direct supervision and control; and that this U.S. Public Land Survey Monument Location Record is true and correct to the best of my knowledge and belief.

Signed: *William C. Rohde*
William C. Rohde RLS 841

		T 36N	
		21	
		R 8E	