

Ch

This form is intended to fulfill the requirements of Chapter A-E 7.08 (3)(a) thru (i) U.S. Public Land Survey Monument Location Record, Wisconsin Administrative Code. Use the reverse side of form for continuation.

U.S. PUBLIC LAND SURVEY MONUMENT LOCATION

Recorders Data

USPLS CORNER: NW SECTION SECTION: 27 TOWNSHIP: 36 NORTH RANGE: 08 EAST

NAME OF WATERWAY FOR M.C. CORNER : N/A SECTION LINE: N/A

~~(CITY)(VILLAGE)~~(TOWN) OF: CRESCENT COUNTY OF: ONEIDA

Description of monument found or placed and all other evidence used as the basis for monument location; including monuments and related measurements required if the corner location was reestablished by lost corner proportionate methods. Also indicate name of original surveyor, original survey date and the corner monument, bearing trees, witness or other reference monuments established; including measured bearing and distance ties, from available records.

THIS CORNER REREFERENCED WITH APPROVAL OF ONEIDA COUNTY SURVEYOR MICHAEL ROMPORTL DUE TO INADEQUATE REMAINING REFERENCES OF USPLS LOCATION RECORD BY WILLIAM G. IMMICH/RLS 1383 FILED NOVEMBER 8, 1984.

Found and accepted a standard 6" dia. concrete monument with stamped GLO brass tablet in top 10" below the south edge of existing blacktop roadway pavement. This recovery completed June 28, 2000; there were no direct witnesses.

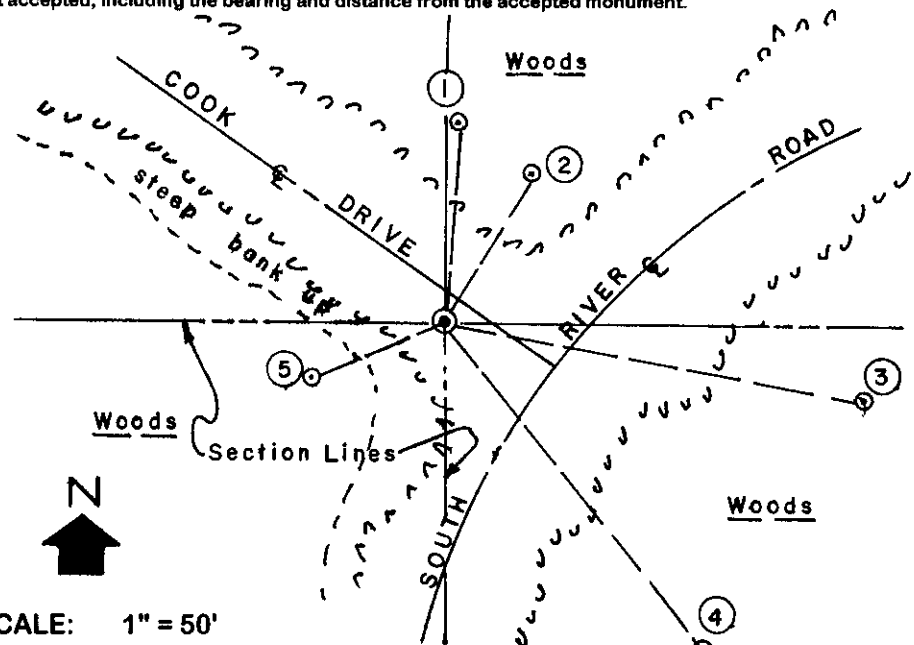
In 1939 during a GLO resurvey, Hal D. Craig and Lester S. Mann set the foregoing GLO monument and marked new BTs: A 6" Oak N23.75°E 70 links, now a 14" Oak with no visible markings but used for new ties; a 6" Oak S40.5°W 17 links, now a 20" Oak S25°W with no visible markings and a 12" Poplar N16°W 140 links, now obliterated.

In March 1968, Norman J. Loftus/RLS 259 noted GLO capped monument found per Plat of Survey filed as B-2506 in Oneida County records.

In 1974, during a GLO resurvey, Ronald J. Eberis found the 1939 GLO resurvey monument and BTs, 10" Oak NE and 11" Oak SW at record distances and bearings.

In May 1995, Todd J. Loftus/RLS 1523 noted GLO monument found at this corner per Plat of Survey filed as B-3194 in Oneida County records.

Plan view map of monument location with bearing and distance ties to a minimum of four(4) described witness or reference monuments of concrete, natural stone, iron, live bearing trees or equivalent material. If applicable, also show a minimum of two(2) bearing and distance ties to any other monument found and not accepted; including the bearing and distance from the accepted monument.

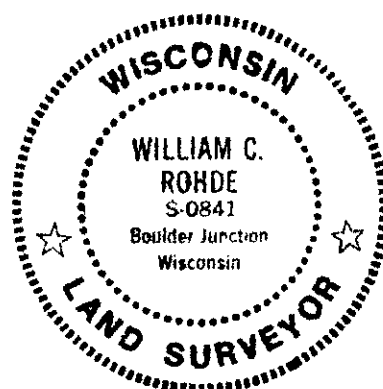


- WITNESS MONUMENT TIES:**
- ① New BT 12" Maple/South trunk of 3 at N04°E 52.54'.
 - ② Old BT 14" Oak N29°E 44.76' to old 60d spike in right face.
 - ③ New BT 7" Pw S79°E 110.83'.
 - ④ New BT 12" Pr S38°E 110.06'.
 - ⑤ New BT 7" Pw S68°W 38.40'.
- See 1984 location record for ties I found OK to power pole and SW oak BT.
Standard white poly 'T' marker post set 5.0' South of corner monument and about 1' West of Stop sign.

SCALE: 1" = 50'

Unless otherwise indicated, all bearing tree ties are to a .25" dia. by 2.5" long PK nail with a 1.25" dia. steel washer driven into unblazed right face and a .25" dia. by 2.5" long PK nail with a 2" dia. steel washer stamped BT is also driven into unblazed face of bearing tree at DBH; the basis for measured bearings is by compass to nearest degree and all tie distances are measured horizontal by steel tape corrected to nearest 1/100th feet at standard temperature of 68° F.

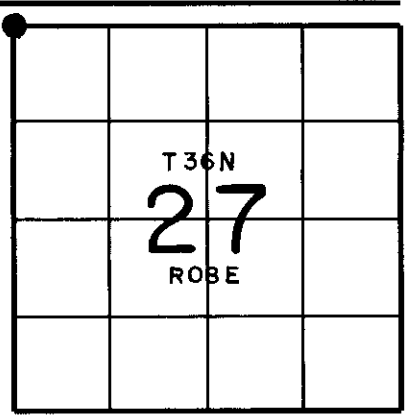
RLS SEAL:



LAND SURVEYOR CERTIFICATE:

I, William C. Rohde, hereby certify that I am duly licensed as a Professional Land Surveyor in the State of Wisconsin; that this USPLS monument location was determined by me and/or under my direct supervision and control; and that this U.S. Public Land Survey Monument Location Record is true and correct to the best of my knowledge and belief.

Signed: *William C. Rohde*
William C. Rohde RLS 841



SECTION LOCATION MAP

INDEX NO. _____

Date Signed: January 31, 2001

3608210000