

This form is intended to fulfill the requirements of Chapter A-E 7.08 (3)(a) thru (i) U.S. Public Land Survey Monument Location Record, Wisconsin Administrative Code. Use the reverse side of form for continuation.

**U.S. PUBLIC LAND SURVEY MONUMENT LOCATION**

Recorders Data

USPLS CORNER: EAST MC SECTION: 28 TOWNSHIP: 36 NORTH RANGE: 08 EAST

NAME OF WATERWAY FOR M.C. CORNER : EMMA LAKE SECTION LINE: NORTH

~~(CITY)(VILLAGE)(TOWN)~~ OF: CRESCENT COUNTY OF: ONEIDA

Description of monument found or placed and all other evidence used as the basis for monument location; including monuments and related measurements required if the corner location was reestablished by lost corner proportionate methods. Also indicate name of original surveyor, original survey date and the corner monument, bearing trees, witness or other reference monuments established; including measured bearing and distance ties, from available records.

Found and accepted a standard 2" dia. iron pipe with stamped GLO brass cap 4" above lake surface this date and about 6 feet NW of existing bog/marsh lake shoreline.

In July 1865, William E. Daugherty/GLO set a wood post as the original corner and marked OBTs: A 12" Pw S40°W 06 links and a 10" Py N 5°W 05 links, all of which are now obliterated.

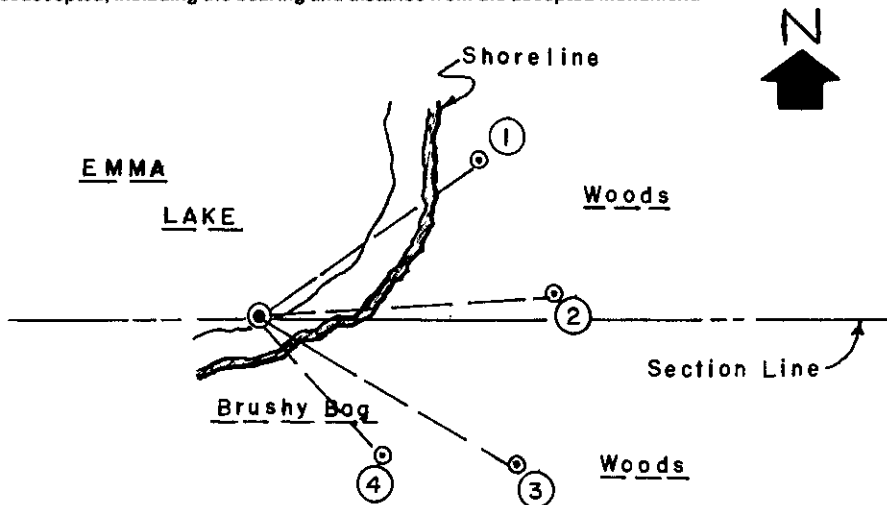
In October 1939, Hal D. Craig and Lester S. Mann/GLO during a resurvey found no original corner evidence and set a new MC with a standard 2" dia. GLO brass capped iron pipe monument and marked new BTs: An 8" Pw N73°E 14 links, now a low sawed rotted 10" stump with plain blaze scaring on West face above root crown; and an 18" Pw S46.5°E 34 links, now a low and badly rotted stump root crown. Tie distances check OK but bearing to NE BT now N85°E. See GLO resurvey field notes filed as L-863 in Oneida County survey records. I nailed a standard BT sign to the top of the sawed off old NE BT stump.

In May 1995, Todd Loftus/RLS 1523 found the 1939 GLO resurvey capped iron pipe down in lake and reset it from the 1939 GLO BTs he found OK, per Plat of Survey filed as B-3194 in Oneida County survey records.

This corner location pointed out to me and witnessed by Mark Haissig, son of adjoining owner on June 23, 2000.

This recovery completed June 28, 2000; there were no further witnesses on such date.

Plan view map of monument location with bearing and distance ties to a minimum of four(4) described witness or reference monuments of concrete, natural stone, iron, live bearing trees or equivalent material. If applicable, also show a minimum of two(2) bearing and distance ties to any other monument found and not accepted; including the bearing and distance from the accepted monument.



**WITNESS MONUMENT TIES:**

- ① New BT 6" Pw N54°E 42.32'.
- ② New BT 6" Pw N85°E 46.70'.
- ③ New BT 14" Pw S60°E 46.20'.
- ④ New BT 8" Pw S42°E 29.08'.

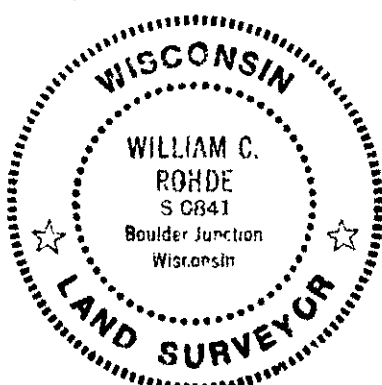
Standard white poly 'T' marker post set in lake bed along the SW side of the GLO capped iron pipe corner monument found.

Note: Hip boots will suffice for the purpose of accessing and setting up over the found corner monument; but the lake bottom is mucky.

SCALE: 1" = 30'

Unless otherwise indicated, all bearing tree ties are to a .25" dia. by 2.5" long PK nail with a 1.25" dia. steel washer driven into unblazed right face and a .25" dia. by 2.5" long PK nail with a 2" dia. steel washer stamped BT is also driven into unblazed face of bearing tree at DBH; the basis for measured bearings is by compass to nearest degree and all tie distances are measured horizontal by steel tape corrected to nearest 1/100th feet at standard temperature of 68° F.

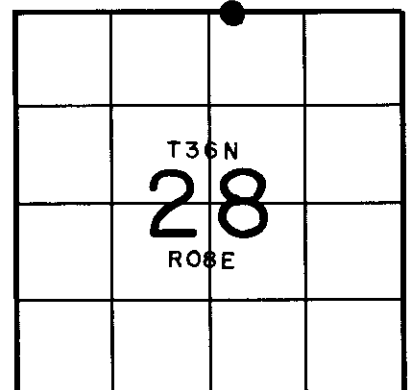
RLS SEAL:



LAND SURVEYOR CERTIFICATE:

I, William C. Rohde, hereby certify that I am duly licensed as a Professional Land Surveyor in the State of Wisconsin; that this USPLS monument location was determined by me and/or under my direct supervision and control; and that this U.S. Public Land Survey Monument Location Record is true and correct to the best of my knowledge and belief.

Signed: *William C. Rohde*  
William C. Rohde RLS 841



R 11, 12

Date Signed: January 31, 2001

SECTION LOCATION MAP

INDEX NO. R 11, 12  
3608 210018

# U S PUBLIC LAND SURVEY MONUMENT RECORD

NOTE: This form is intended and designed to fulfill all requirements of Wisconsin Administrative Code, Chapter A-E 7.08 U.S. Public Land Survey Monument Record (3) (a-)

A-E 7.08(3)(a) Identity of corner  
 MEANDER CORNER, SOUTH LINE OF SECTION 21  
 TOWNSHIP 36 NORTH  
 RANGE 08 EAST OF THE 4TH PM  
 TOWN OF CRESCENT  
 COUNTY OF ONEIDA

WISCORS - ONEIDA COUNTY  
 N: 145,229.603 USft  
 E: 242,156.816 USft  
 Datum: NAD83 (2011)  
 GNSS Method RTN - Direct  
 GNSS Control WISCORS VRS



The coordinate value shown has been verified by the average of two or more GPS observations at a markedly different time.

A-E 7.08(3)(b) Description of any record evidence, monument evidence, occupational evidence, testimonial evidence, or any other material evidence.

Original Surveyor: William Daugherty

REGISTER OF DEEDS OFFICE  
 ONEIDA COUNTY  
 FILED

Date of Original Survey Commenced: July 06, 1863  
 Completed: July 16, 1863

APR 21 2022

Original Accessories:

Tamarac 8 N. 57° W. 8 links  
 Spruce 7 S. 49° E. 11 links

See Previous Monument Record:  
 R - 11, 12

KYLE J. FRANSON  
 REGISTER OF DEEDS

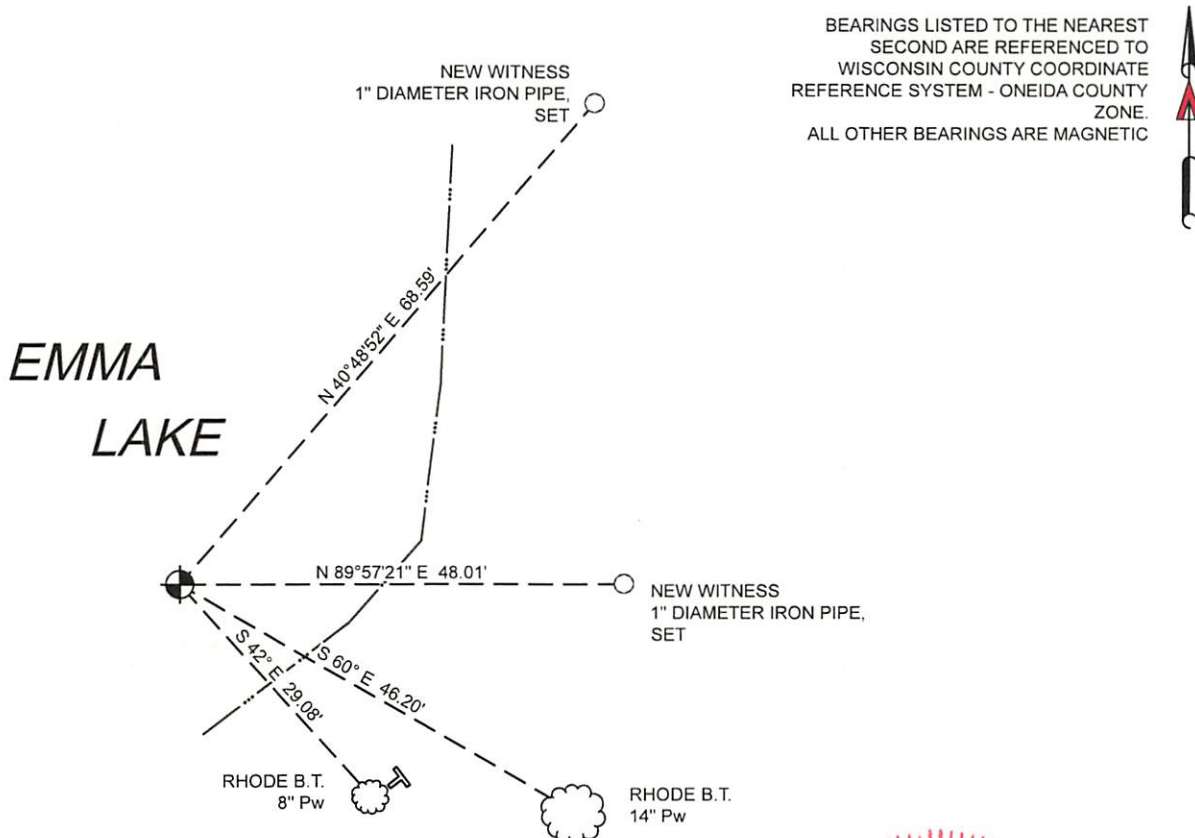
September - October, 1939 - Surveyor - Hal D. Craig - Set an iron post, 36 ins. long, 1 in. diam., 28 ins. in the ground, with brass cap mkd. - Craig made new bearing trees: White Pine, 8" - N.73° E., 14 lks. and White Pine, 18" - S.46 1/2° E., 34 lks.  
 May, 1995 - Surveyor 1523 - Todd J. Loftus - Found "Capped iron pipe lying in 3' of water & remains of bearing trees. Reset GLO Mon. from bearing trees" - Oneida Co. Map B3194.

A-E 7.08(3)(f) Whether the corner was restored through acceptance of an obliterated location or a found perpetuated location.

November 1, 2021 - I found a 1" diameter iron pipe with a 2 1/2" diameter brass cap, stamped to identify corner location. The monument is in the lake.

I accept this monument as a FOUND PERPETUATED LOCATION OF THE CORNER and established new witnesses as shown below.

A-E 7.08(3)(c)(d)(e)(h) Plan view of corner with references to at least 4 witness monuments. If in disagreement with previously established corner, show the distances between the two corners and also indicate the ties to the disputed. The directions and distances to other public land survey corners used as evidence or used for determining the corner location.



BEARINGS LISTED TO THE NEAREST  
 SECOND ARE REFERENCED TO  
 WISCONSIN COUNTY COORDINATE  
 REFERENCE SYSTEM - ONEIDA COUNTY  
 ZONE.  
 ALL OTHER BEARINGS ARE MAGNETIC



A-E 7.08(3)(i) I, Jeffrey L. DeMuth, Professional Land Surveyor No. S-2656, hereby certify that the corner location on this record was determined by me or under my direction and control and that this U.S. Public Land Survey Monument Record is correct and complete to the best of my knowledge, and belief

SIGNATURE  DATE March 28, 2022



43608210018