

Stock No. 26273

U. S. PUBLIC LAND SURVEY MONUMENT RECORD

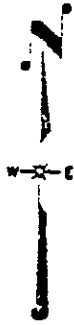
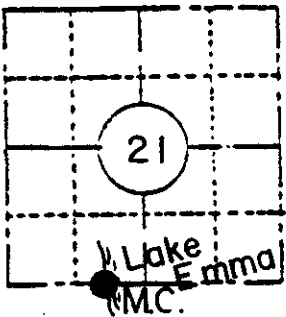
INSTRUCTIONS :

This record shall show the location of the corner and shall include all of the following nine elements (a through i).

(a) Identify the corner by reference to the U.S. public land survey system.

M.C. on W. shore LAKE EMMA, SEC. 21, TOWNSHIP 36 NORTH, RANGE 8 EAST, ONEIDA COUNTY, WIS.

- July 15, 1863 orig. cor. set by W.E. Daugherty; East random bet. 21 & 28 30.16 int. sec. cor. correct back 29.30 lk., 50.22 over lk. set M.C. W. pine 12 S 40 W 61ks; Y. pine 10 N 5 W 51ks. B.F. Dorr 1898 from NW cor. 28 east 24.85 found no M.C.
- 1915 D.H. Vaughan from SW cor 21 east 36.00 int. lk. did not find M.C.
- 1939 U.S. General Land Office executed a resurvey of the area and states in their notes; from the cor. of Sec. 21, 22, 27 & 28 S 89° 54' W bet. 21 & 28.....20.98 S shore Lk. Emma, 52.61 west shore lk. Emma, the point for the M.C. is at the intersect. of true line with lake shore; there is no remaining evidence of the original cor., set a iron post with brass cap b.f.s N Pine 12 S 48 1/2 W 1341ks; Tamarack 5 N 123/4 W 1521ks, thence 53.50 leave marsh, 58.30 fence to south, 78.62 sec cor.



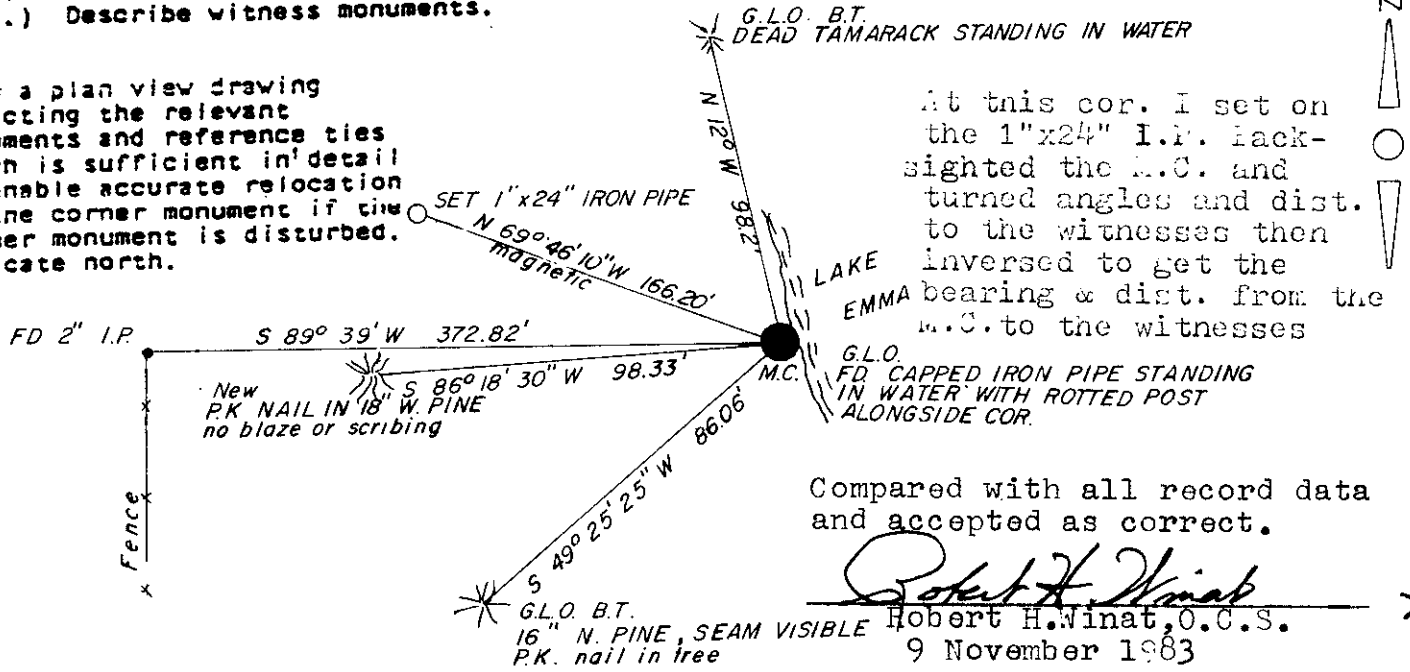
LOCATION SKETCH (Location of landmark indicated by "●")

(b) Describe any record evidence, monument evidence, occupational evidence, testimonial evidence or any other material evidence you considered, and whether the monument was found or placed.

At the corner I found the U.L.C. monument and the L.F.S. in place. I also found a error in measurement to the sec. cor. west see U.S. Public Land Survey Monument Record for the SE cor of Sec. 20, T 36N R 8 E for information.

(c) In the plan view drawing below, provide reference ties to at least 4 witness monuments, or, if the location is within a municipality, to at least 2 witness monuments. (Witness monuments shall be made of concrete, natural stone, iron or other equally durable material, except wood.) Describe witness monuments.

(d) Show a plan view drawing depicting the relevant monuments and reference ties which is sufficient in detail to enable accurate relocation of the corner monument if the corner monument is disturbed. Indicate north.



At this cor. I set on the 1"x24" I.P. back-sighted the M.C. and turned angles and dist. to the witnesses then inversed to get the bearing & dist. from the M.C. to the witnesses

Compared with all record data and accepted as correct.
 Robert H. Winat, O.C.S.
 9 November 1983

R-10-11

3608210027

(e) Describe any material discrepancy between the location of the corner as restored or reestablished and the location of that corner as previously restored or reestablished by distance and direction. Show the discrepancy on the plan view drawing under (d), above. Show the distances between the corner as previously restored or reestablished and (1) the corner as restored or reestablished, and (2) to at least 2 of the witness monuments shown on the drawing in (d), above.

none

(f) Was the corner restored through acceptance of (1) an obliterated evidence location, or, (2) a found perpetuated location?

a found perpetuated location

(g&h) Was the corner reestablished through lost corner proportionate methods? If so, show the method, including the directions and distances to other public land survey corners used as evidence or used for proportioning in determining the corner location?

see U.S.P.L.S.M.R. sheet for the SE cor. of Sec. 20, T 36 N, R 8 E for a measurement error to the west

REGISTER'S OFFICE }
Oncida County, Wis. }

Received for Record the 15 day of

March A.D. 19 84 at

11:30 o'clock A. M. and recorded in

Vol. _____ on page _____

Doris Verage Kuehn
Register

Cynthia A. Pitts, Deputy

(i) Michael J. Romportl
(type or print name) certify that the corner location shown on this record was determined by me or under my direction and control and that this U.S. Public Land Survey Monument Record is correct and complete to the best of my knowledge and belief.

Michael J. Romportl
Signature

7-22-83
Date

Michael J. Romportl R.L.S. 1624
Genisot & Associates Inc.
Rhinelander, Wis.

