

U.S. PUBLIC LAND SURVEY MONUMENT LOCATION

Recorders Data

USPLS CORNER: SOUTH MC SECTION: 22 TOWNSHIP: 36 NORTH RANGE: 08 EAST

NAME OF WATERWAY FOR M.C. CORNER: LILY LAKE SECTION LINE: WEST

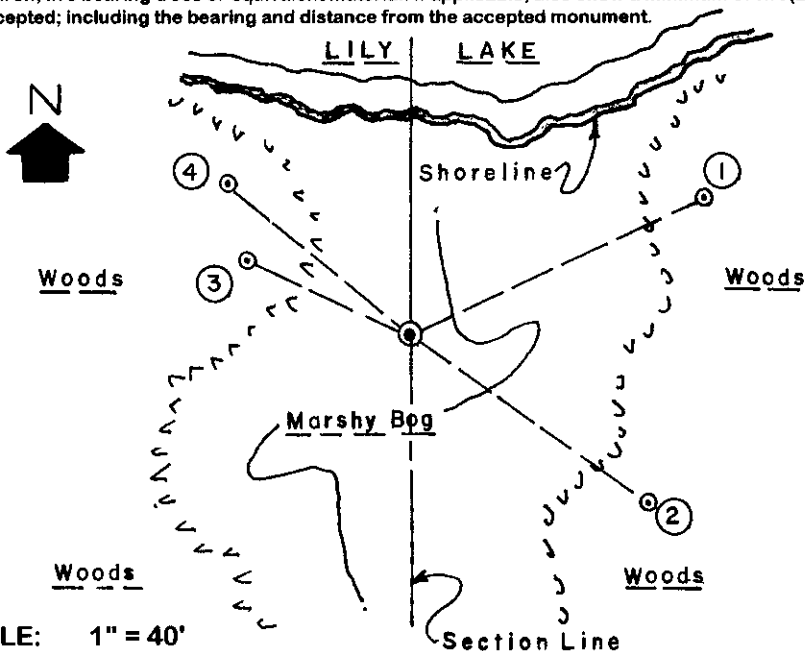
~~(CITY/VILLAGE)~~(TOWN) OF: CRESCENT COUNTY OF: ONEIDA

Description of monument found or placed and all other evidence used as the basis for monument location; including monuments and related measurements required if the corner location was reestablished by lost corner proportionate methods. Also indicate name of original surveyor, original survey date and the corner monument, bearing trees, witness or other reference monuments established; including measured bearing and distance ties, from available records.

Found and accepted a 1" dia. iron pipe with stamped GLO brass cap about 9" above existing bog/marsh surface which I carefully pulled and reset location with a standard 2" dia. by 60" long aluminum pipe monument with stamped Oneida County cap 6" above marsh/bog surface for better stability. I left the old GLO 36" long iron pipe monument flat on the matted bog/marsh surface next to the new monument set. In July 1865, William E. Daugherty/GLO set a wood post as the original corner and marked OBTs: A 6" Tamarack S17°E 11 links and a 5" Tamarack S83°W 29 links, all of which are now obliterated. In September and October 1939 during a GLO resurvey, Hal D. Craig and Lester S. Mann found the point of original GLO wood post and the stump remains of both OBTs. They remonumented the corner location with a standard 1" dia. by 36" long iron pipe monument with stamped GLO brass cap and marked new BTs: A 4" Bw S48.75°E 18 links and a 9" Tamarack S54°W 12 links, both now obliterated beyond recovery purposes. See GLO field notes filed as L-863 in Oneida County survey records. In March 1968, Norman J. Loftus/RLS259 notes capped iron pipe monument at this MC per Plat of Survey filed as B-2506 in Oneida County survey records. In May and June 1974, Ronald J. Eberis during a GLO resurvey found the 1939 GLO capped iron pipe monument and the decayed remains of both 1939 GLO resurvey BTs; and marked new BTs: A 10" Tamarack S27°E 65 links and a 6" Tamarack N18°W 32 links, both of which are now dead but identified by faint markings and position. In May 1995, Todd J. Loftus/RLS1523 notes he found a GLO monument at this MC per Plat of Survey filed as B-3194 in Oneida County survey records.

This recovery completed June 28, 2000; there were no direct witnesses.

Plan view map of monument location with bearing and distance ties to a minimum of four(4) described witness or reference monuments of concrete, natural stone, iron, live bearing trees or equivalent material. If applicable, also show a minimum of two(2) bearing and distance ties to any other monument found and not accepted; including the bearing and distance from the accepted monument.



WITNESS MONUMENT TIES:

- ① New BT 10" Maple N65°E 68.38'.
- ② New BT 7.5" Maple/ North trunk of 5 at S55°E 61.25' to PK nail/washer in left face.
- ③ New BT 5" Sb N65°W 36.69'.
- ④ New BT 6" Spruce N50°W 48.51'.

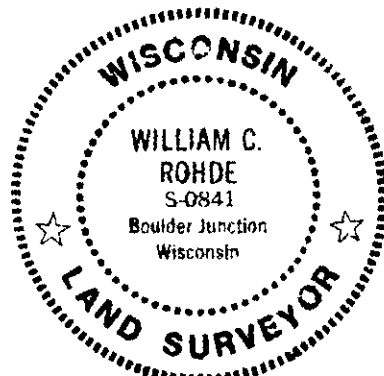
Standard white poly'T' marker post set 9" East of the corner monument.

Corner falls in bog/marsh area about 45 feet South of the southerly shore line of Lily Lake.

SCALE: 1" = 40'

Unless otherwise indicated, all bearing tree ties are to a .25" dia. by 2.5" long PK nail with a 1.25" dia. steel washer driven into unblazed right face and a .25" dia. by 2.5" long PK nail with a 2" dia. steel washer stamped BT is also driven into unblazed face of bearing tree at DBH; the basis for measured bearings is by compass to nearest degree and all tie distances are measured horizontal by steel tape corrected to nearest 1/100th feet at standard temperature of 68° F.

RLS SEAL:



LAND SURVEYOR CERTIFICATE:

I, William C. Rohde, hereby certify that I am duly licensed as a Professional Land Surveyor in the State of Wisconsin; that this USPLS monument location was determined by me and/or under my direct supervision and control; and that this U.S. Public Land Survey Monument Location Record is true and correct to the best of my knowledge and belief.

Signed: *William C. Rohde*
William C. Rohde RLS 841

	T36N		
	22		
	ROBE		

Q-R 13

SECTION LOCATION MAP

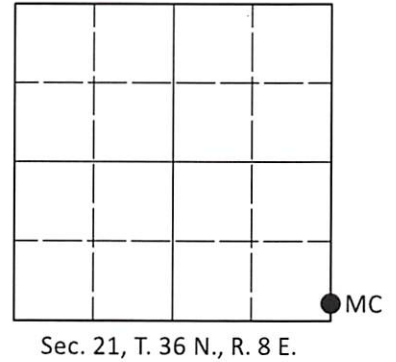
INDEX NO. 3608210200

U.S. PUBLIC LAND SURVEY MONUMENT RECORD

Note: This form is intended and designed to fulfill all requirements of Wisconsin Administrative Code, Chapter A-E 7.08 U.S. Public Land Survey Monument Record (3)(a-i).

(a) CORNER LOCATION
 Meander Cor. of Secs. 21 & 22
 Township 36 North
 Range 8 East of the 4th P.M.
 Town of Crescent
 County of Oneida

WISCRS - Oneida County
 N: 145,393.60 USft
 E: 244,062.93 USft
 Datum: NAD 83(2011) ep. 2010.00
 GNSS Method: RTN - Direct
 GNSS Control: WISCORS VRS



(b)(f)(g)(h) Description of monument found at this corner and if it was accepted, state all evidence (material, testimonial, occupational, plats, records, other monuments) used as a basis for accepting. If not accepted or if nothing was found, state evidence used as basis for establishing location. If re-established through lost corner proportionate methods, indicate all monuments, distances and directions used to establish. Indicate type of monument and sign post found or set.

This record is a perpetuation of the following land corner document(s):

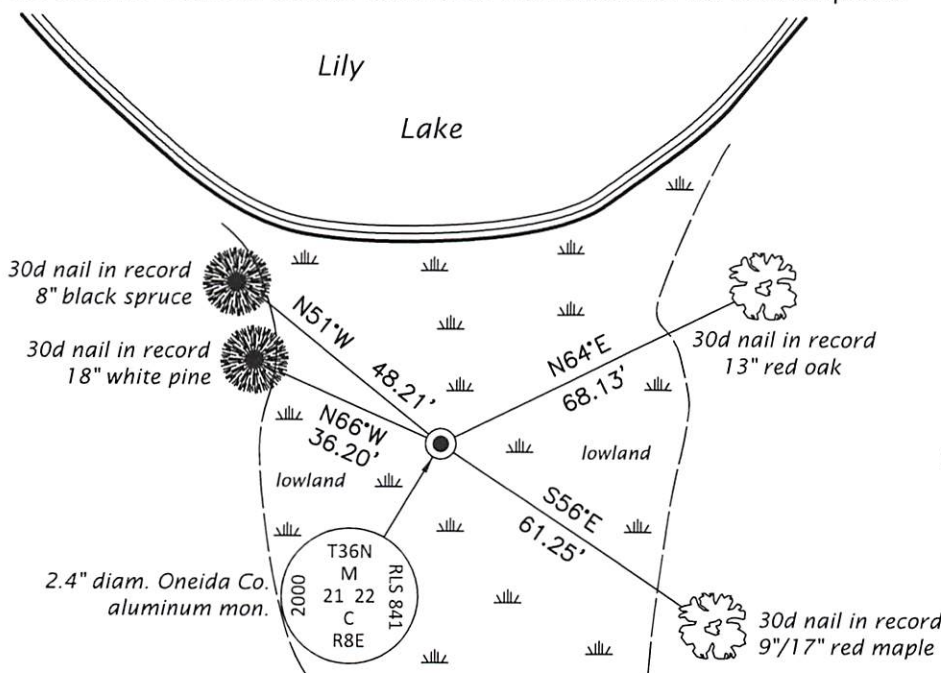
Jan. 31, 2001: USPLS Monument Record by William C. Rohde, filed in Oneida County

A complete history of the corner can be found on the previous land corner document(s). I accept the record activity as a true and faithful perpetuation or reestablishment of the original corner location and further perpetuate it as described below.

May 28, 2021: I found and accepted the record monument, a 2.4" diam. aluminum pipe, firmly set, with a 3.3" diam. Oneida Co. aluminum cap projecting 5" above the bog surface. I found or established accessories as shown below. I found a white vinyl sign post bearing East, 0.7 ft.

The coordinate value shown has been verified by at least one of the following methods: 1) comparison to a previously GNSS determined published value; 2) the value is the average of two or more GNSS observations at a markedly different time; 3) one or more distances were measured back to the GNSS observed corner from temporary GNSS observed offset locations.

(c)(d)(e) Plan view of corner with ties to at least 4 witness monuments. If in disagreement with previously established corner, show the distances between the two corners and also indicate the ties to the disputed.



REGISTER OF DEEDS OFFICE
 ONEIDA COUNTY
 FILED

JUN 23 2021

KYLE J. FRANSON
 REGISTER OF DEEDS

(i) I, Jeffrey W. Austin, Professional Land Surveyor No. S-1885, hereby certify that the corner location on this record was determined by me or under my direction and control and that this U.S. Public Land Survey Monument Record is correct and complete to the best of my knowledge and belief.

[Handwritten Signature]
 Signature

JUNE 1, 2021
 Date