

U S PUBLIC LAND SURVEY MONUMENT RECORD

NOTE: This form is intended and designed to fulfill all requirements of Wisconsin Administrative Code, Chapter A-E 7.08 U.S. Public Land Survey Monument Record (3) (a-i)

A-E 7.08(3)(a) Identity of corner
 MEANDER CORNER, EAST LINE OF SECTION 21
 TOWNSHIP 36 NORTH
 RANGE 08 EAST OF THE 4TH PM
 TOWN OF CRESCENT
 COUNTY OF ONEIDA

WISCRS - ONEIDA COUNTY
 N: 146,307.555 USft
 E: 243,933.010 USft
 Datum: NAD83 (2011)
 GNSS Method RTN - Direct
 GNSS Control WISCORS VRS



The coordinate value shown has been verified by the average of two or more GPS observations at a markedly different time.

A-E 7.08(3)(b) Description of any record evidence, monument evidence, occupational evidence, testimonial evidence, or any other material evidence.

Original Surveyor: William Daugherty

REGISTER OF DEEDS OFFICE
 ONEIDA COUNTY
 FILED

Date of Original Survey Commenced: July 06, 1863
 Completed: July 16, 1863

APR 21 2022

Original Accessories:
 Spruce 10 N. 87° W. 55 links
 Tamarac 6 N. 57° E. 21 links

See Previous Monument Record:
 (No Record)

KYLE J. FRANSON
 REGISTER OF DEEDS

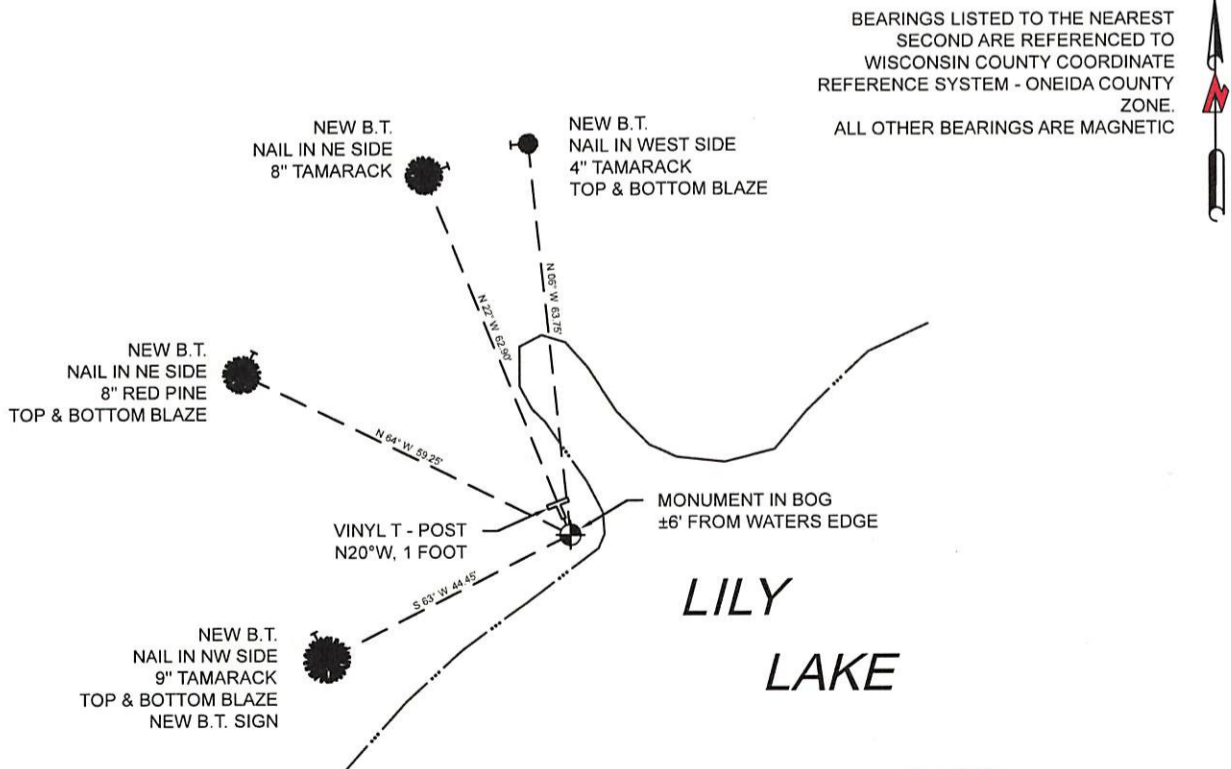
September - October, 1939 - Surveyor - Hal D. Craig - Set an iron post, 3 ft. long, 1 in. diam., 28 ins. in the ground, with brass cap mkd. - Craig made new bearing trees: Tamarack, 10" - N.8° E., 39 lks. and Tamarack, 8" - N.43 1/2°W., 20 lks.
 March, 1968 - Surveyor 00259 - Norman J. Loftus - "GOV'T. M.C." - Oneida Co. Map B2506
 November 1984 - Surveyor 1383 - William G. Immich - Found "G.L.O. Brass Capped Iron Pipe" - Oneida Co. Map B6346
 May, 1995 - Surveyor 1523 - Todd J. Loftus - Found "GLO Mon." - Oneida Co. Map B3194
 June, 2019 - Surveyor 2143 - Russell F. Brown - Found "2" Brass Capped Iron Pipe" - Oneida Co. Map A3649

A-E 7.08(3)(f) Whether the corner was restored through acceptance of an obliterated location or a found perpetuated location.

November 1, 2021 - I found a 1" diameter iron pipe with a 2 1/2" diameter brass cap, stamped to identify corner location.

I accept this monument as a FOUND PERPETUATED LOCATION OF THE CORNER and established new witnesses as shown below.

A-E 7.08(3)(c)(d)(e)(h) Plan view of corner with references to at least 4 witness monuments. If in disagreement with previously established corner, show the distances between the two corners and also indicate the ties to the disputed. The directions and distances to other public land survey corners used as evidence or used for determining the corner location.



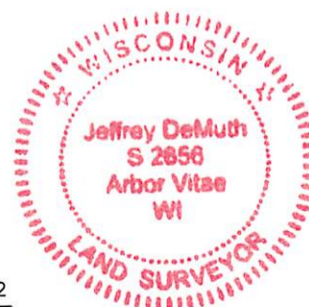
BEARINGS LISTED TO THE NEAREST
 SECOND ARE REFERENCED TO
 WISCONSIN COUNTY COORDINATE
 REFERENCE SYSTEM - ONEIDA COUNTY
 ZONE.
 ALL OTHER BEARINGS ARE MAGNETIC



A-E 7.08(3)(i) I, Jeffrey L. DeMuth, Professional Land Surveyor No. S-2656, hereby certify that the corner location on this record was determined by me or under my direction and control and that this U.S. Public Land Survey Monument Record is correct and complete to the best of my knowledge, and belief

Jeffrey L. DeMuth
 SIGNATURE

March 28, 2022
 DATE



Q/R-13
 43608210000