

U.S. PUBLIC LAND SURVEY MONUMENT RECORD

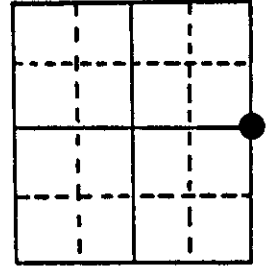
Note: This form is intended and designed to fulfill all requirements of Wisconsin Administrative Code, Chapter A-E 5.02, U.S. Public Land Survey Monument Record (3) (a) (b) (c) (d) (e) (f) (g) (h) (i). An additional sheet may be added if necessary to conform with said requirements.

(a) Corner location: Township 36 North

Range 8 East

Town: CRESCENT

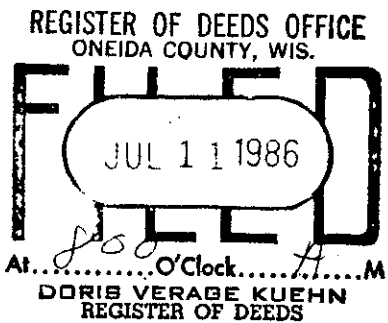
County ONEIDA



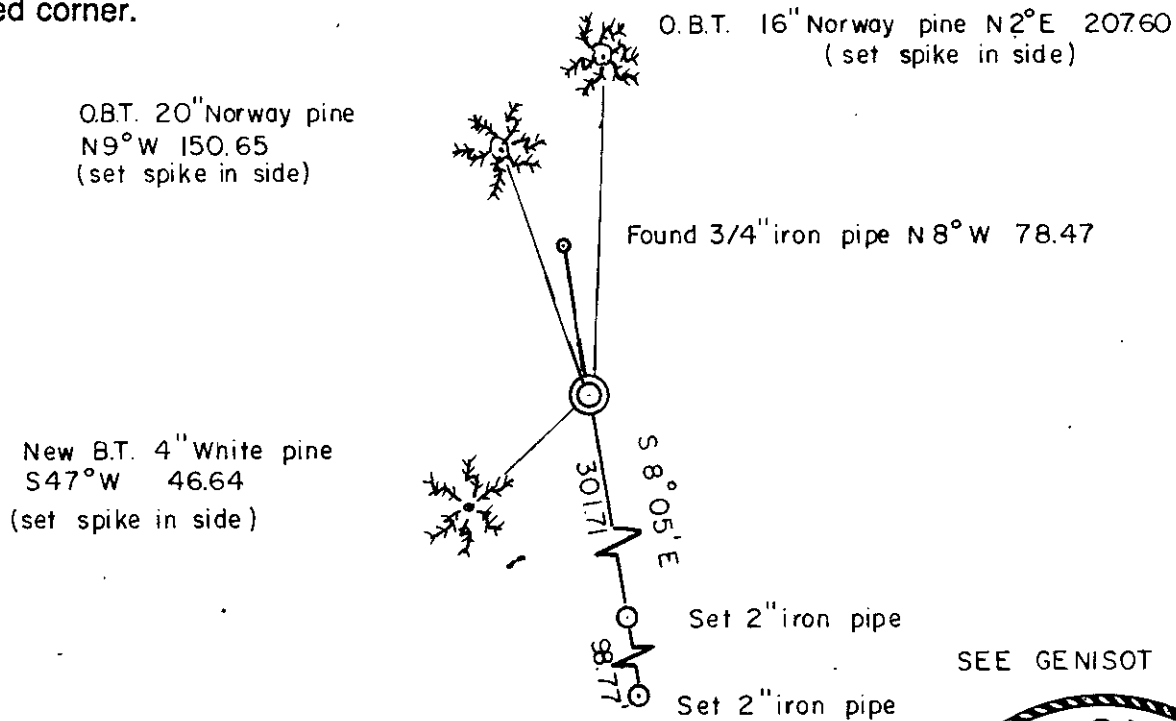
Section 21

(b) (f) (g) (h) Description of monument found at this corner and if it was accepted, state all evidence (material, testimonial, occupational, plats, records, other monuments) used as a basis for accepting. If not accepted or if nothing was found, state evidence used as basis for establishing location. If reestablished through lost corner proportionate methods, indicate all monuments, distances and directions used to establish.

FOUND G.L.O. Brass Capped Concrete Monument set by Hal D. Craig in 1939 Dependent Resurvey - SEE NOTES ON REVERSE SIDE



(c) (d) (e) Plan view of corner with ties to at least 4 witness monuments. If in disagreement with previously established corner, show the distances between the two corners and also indicate the ties to the disputed corner.



SEE GENISOT DWG, 7555

(i) I, William Immich
 (type or print name) certify that the corner location on this record was determined by me or under my direction and control and that this U.S. Public Land Survey Monument Record is correct and complete to the best of my knowledge and belief.

William Immich Signature November 8, 1984 Date



Index No. P-13

3608212000

Stock No. 26273

COPY OF HAL D. CRAIGS NOTES

S. $0^{\circ} 47'$ E., bet. secs. 21 and 22.

Over rolling land, through timber and undergrowth, along a cleared fence line.

- 2.70 Enter a tamarack and spruce swamp, bears N. 70° W. and S. 70° E.
- 20.58 Cleared fence line turns to the east, continue through swamp.
- 30.60 Leave swamp, thence over rolling land, through upland timber and undergrowth, bears E. and W.
- 39.00 Enter a burned spruce and tamarack swamp, bears NE. and SW.
- 41.30 The point for the $\frac{1}{4}$ sec. cor., at the corner of fences bearing S. and W., marked by an old tamarack stake, 3 ins. square, firmly set with 3 ft. of it above ground, marked with a scribo " $\frac{1}{4}$ S".

Set a concrete monument, 24 ins. long, 6 ins. diam., 18 ins. in the ground, for the $\frac{1}{4}$ sec. cor., with brass tablet, $3\frac{1}{2}$ ins. diam., 3 in. stem, embedded in top and mkd.,

S 21	S 22
------	------

1939

from which,

The remains of the original bearing trees,

A badly rotted and burned spruce stump, bears S. 86° E., 21 lks. dist.

A badly rotted and burned spruce stump, bears S. $62\frac{1}{2}^{\circ}$ W., 24 lks. dist.,

And new bearing trees,

A norway pine, 14 ins. diam., bears N. $2\frac{1}{4}^{\circ}$ E., 315 lks. dist., mkd. $\frac{1}{2}$ S 22 B T

A norway pine, 12 ins. diam., bears N. $9\frac{1}{2}^{\circ}$ W., 227 lks. dist., mkd. $\frac{1}{4}$ S 21 B T

U S PUBLIC LAND SURVEY MONUMENT RECORD

NOTE: This form is intended and designed to fulfill all requirements of Wisconsin Administrative Code, Chapter A-E 7.08 U.S. Public Land Survey Monument Record (3) (a-i)

A-E 7.08(3)(a) Identity of corner
 EAST 1/4 CORNER OF SECTION 21
 TOWNSHIP 36 NORTH
 RANGE 08 EAST OF THE 4TH PM
 TOWN OF CRESCENT
 COUNTY OF ONEIDA

WISCORS - ONEIDA COUNTY
 N: 147,796.433 USft
 E: 243,721.196 USft
 Datum: NAD83 (2011)
 GNSS Method RTN - Direct
 GNSS Control WISCORS VRS



The coordinate value shown has been verified by the average of two or more GPS observations at a markedly different time.

A-E 7.08(3)(b) Description of any record evidence, monument evidence, occupational evidence, testimonial evidence, or any other material evidence.

Original Surveyor: William Daugherty

REGISTER OF DEEDS OFFICE
 ONEIDA COUNTY
 FILED

Date of Original Survey Commenced: July 06, 1863
 Completed: July 16, 1863

APR 21 2022

Original Accessories:
 Spruce 10 S. 86° E. 22 links
 Spruce 6 S. 69° W. 26 links

See Previous Monument Record:
 Index No. P-13

KYLE J. FRANSON
 REGISTER OF DEEDS

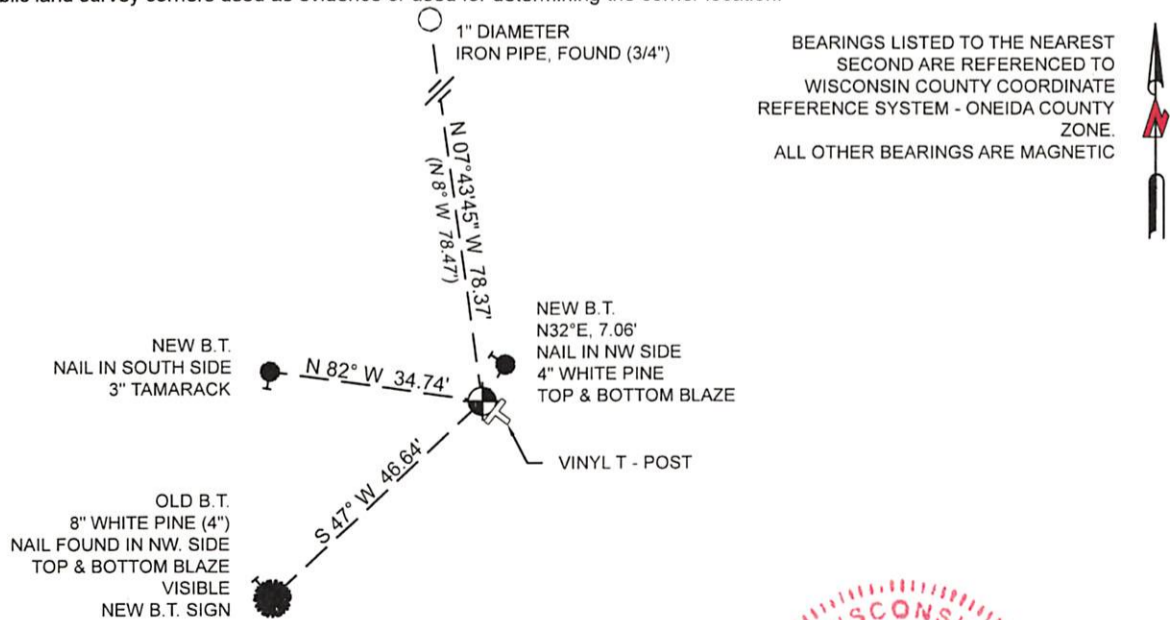
- February, 1935 - Surveyor R.H. Hall - Notes: "stk at fence corner" - Oneida Co. Map B2846
- September - October, 1939 - Surveyor - Hal D. Craig - Found 3" SQ. Tamarack stake scribed "1/4 S" - Craig set a concrete monument 24" long, 6" dia., with a 3.5" dia. brass tablet marked. Craig made new bearing trees: Norway, 14" - N.2 1/4° E., 315 lks. and Norway, 12" - N.9 1/4°W., 227 lks.
- March, 1973 - Genisot - Notes: "U.S.G.L.O. Concrete Monument" - Oneida Co. Map A369
- November 1984 - Surveyor 1383 - William G. Immich - Found "G.L.O. Brass Capped Concrete Monument" - USPLS Monument Record P-13 & Oneida Co. Map B6346
- April, 1994 - Surveyor 2148 - Russell F. Brown - Found "G.L.O. Brass Capped Concrete Monument" - Oneida Co. Map B2880
- October 2003 - Surveyor 2070 - Micheal E. Weber - Found "G.L.O. Concrete Brass Capped Monument" - Oneida Co. Map B5387
- May, 2004 - Surveyor 1182 - William E. Bandow - Found "Brass Capped Concrete Monument" - Oneida Co. Map B5659
- October 2004 - Surveyor 1523 - Todd J. Loftus - Found "Subdivisional Monument of Record" - Oneida Co. Map B5820
- June, 2005 - Surveyor 2439 - Charles L. Oleinik - Found "US Land Office Brass Cap" - Oneida Co. Map A1518
- June, 2006 - Surveyor 2731- Jon W. Bandow - Found "G.L.O. Concrete Monument with Brass Cap - Oneida Co. Map B6425
- October 2012 - Surveyor 1523 - Todd J. Loftus - Found "Subdivisional Monument of Record" - Oneida Co. Map A2702
- December, 2018 - Surveyor 2731- Jon W. Bandow - Found "Brass Capped Monument" - Oneida Co. Map L3193
- June, 2019 - Surveyor 2148 - Russell F. Brown - Found "2" Brass Capped Iron Pipe" - Oneida Co. Map A3649

A-E 7.08(3)(f) Whether the corner was restored through acceptance of an obliterated location or a found perpetuated location.

November 01, 2021 - I found a 6" diameter concrete monument with a 3" diameter brass cap stamped to identify corner location. I also found 2 of Immich's witnesses intact as shown below.

I accept this monument as a FOUND PERPETUATED LOCATION OF THE CORNER and established new witnesses as shown below.

A-E 7.08(3)(c)(d)(e)(h) Plan view of corner with references to at least 4 witness monuments. If in disagreement with previously established corner, show the distances between the two corners and also indicate the ties to the disputed. The directions and distances to other public land survey corners used as evidence or used for determining the corner location.



A-E 7.08(3)(i) I, Jeffrey L. DeMuth, Professional Land Surveyor No. S-2656, hereby certify that the corner location on this record was determined by me or under my direction and control and that this U.S. Public Land Survey Monument Record is correct and complete to the best of my knowledge, and belief

SIGNATURE  DATE March 28, 2022

