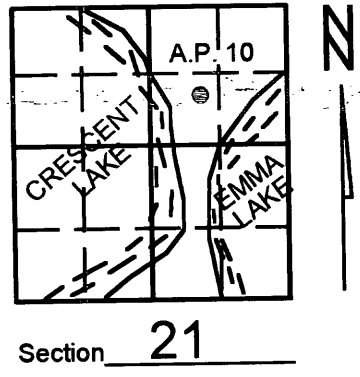


U.S. PUBLIC LAND SURVEY MONUMENT RECORD

Note: This form is intended and designed to fulfill all requirements of Wisconsin Administrative Code, Chapter A-E 7.08 U.S. Public Land Survey Monument Record (3)(a)(b)(c)(d)(e)(f)(g)(h)(i). An additional sheet may be added if necessary to conform with said requirements.

(a) Corner location: Township 36 North
 Range 08 (East/West)
 Town/City/Village CRESCENT
 County ONEIDA

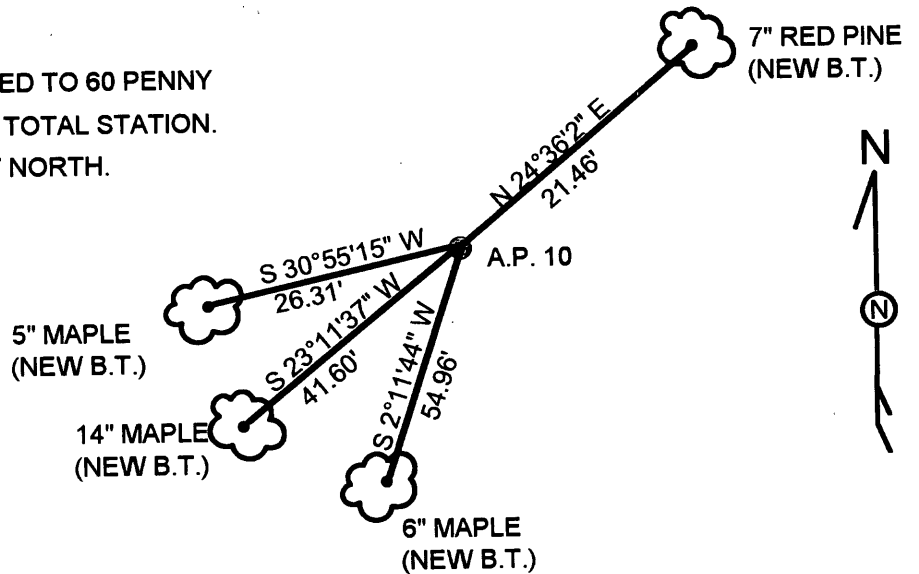


(b) (f) (g) (h) Description of monument found at this corner and if it was accepted, state all evidence (material, testimonial, occupational, plats, records, other monuments) used as a basis for accepting. If not accepted or if nothing was found, state evidence used as basis for establishing location. If reestablished through lost corner proportionate methods, indicate all monuments, distances and directions used to establish. Indicate type of monument found or set and sign post.

- 1939 - G.L.O. SET IRON POST 36" LONG, 1" DIAMETER, 28" INTO THE GROUND FOR ANGLE POINT 10 WITH BRASS CAP, AND MADE THE FOLLOWING BEARING TREES: 6" NORWAY PINE, S 10.5° E, 47 LINKS, 8" NORWAY PINE, S 18 3/4° W, 53 LINKS.
- 1983 - JAMES KASSON FOUND BRASS CAPPED, IRON PIPE FOR A.P. 10 AND SHOWS THE A.M.C. BEARING, S 19°46'00" W, 290.09' FROM A.P. 10.
- 2000 - KEVIN BIXBY FOUND BRASS CAPPED, IRON PIPE FOR A.P. 10 IN FAIR CONDITION AND WITNESSED AS SHOWN BELOW. A.M.C. BEARS, S 19°21'14" W, 289.74'.

(c) (d) (e) Plan view of corner with ties to at least 4 witness monuments. If in disagreement with previously established corner, show the distances between the two corners and also indicate the ties to the disputed corner.

NOTE: BEARINGS AND DISTANCES MEASURED TO 60 PENNY SPIKES SET IN BASE OF TREES WITH TOTAL STATION. SET WHITE PLASTIC POST 1.00 FOOT NORTH. NO SCALE.



(i) I, KEVIN P. BIXBY
 (type or print name) certify that the corner location on this record was determined by me or under my direction and control and that this U.S. Public Land Survey Monument Record is correct and complete to the best of my knowledge and belief.



Kevin P. Bixby Signature 02/04/00 Date

Stamp

3608213325

Index No. 0 P 11-12

REGISTER OF DEEDS OFFICE
ONEIDA COUNTY, WIS.

FILED

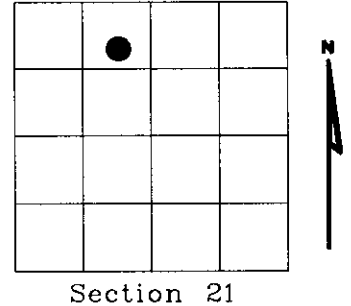
FEB 1 0 2000

At _____ O'Clock _____ M
THOMAS H. LEIGHTON
REGISTER OF DEEDS

U.S. PUBLIC LAND SURVEY MONUMENT RECORD

NOTE: This form is intended and designed to fulfill all requirements of Wisconsin Administrative Code, Chapter A-E 7.08 U.S. Public Land Survey Monument Record (3)(a)(b)(c)(d)(e)(f)(g)(h)(i). An additional sheet may be added if necessary to conform with said requirements.

(a) Corner location: Township 36 North
 Range 08 East
 Town of CRESCENT
 ONEIDA County, Wisconsin



Section 21

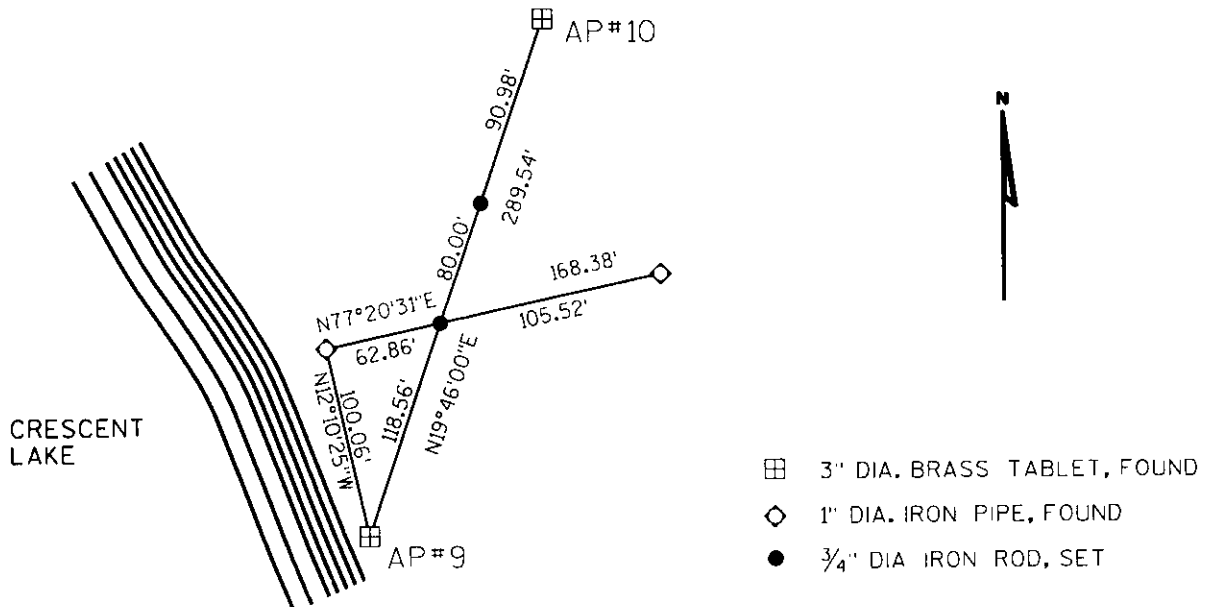
(b)(f)(g)(h) Description of monument found at this corner and if it was accepted, state all evidence (material, testimonial, occupational, plats, records, other monuments) used as a basis for accepting. If not accepted or if nothing was found, state evidence used as basis for establishing location. If reestablished through lost corner proportionate methods, indicate all monuments, distances and directions used to establish. Indicate type of monument found or set and sign post.

SEPTEMBER-OCTOBER 1939 - HAL D. CRAIG AND LESTER S. MANN SET AP #10 BETWEEN GOVERNMENT LOTS 1 & 9, SECTION 21, TOWN 36 NORTH, RANGE 8 EAST WHILE PERFORMING A DEPENDENT REURVEY OF SECTIONS 16 AND 21 UNDER THE DIRECTION OF THE UNITED STATES DEPARTMENT OF THE INTERIOR GENERAL LAND OFFICE. SEE MAP # B1745 ON RECORD AT ONIEDA COUNTY LAND INFORMATION OFFICE.

APRIL 2002 - DENNIS B. ROBERTS REMOVES 1939 BRASS CAP, AP#10 AND SETS WITNESSES ITS POSITION AS SHOWN BELOW.

THE LOCATION OF AP#10 WAS TO BE DESTROYED BY NEW HOME CONSTRUCTION.

(c)(d)(e) Plan view of corner with ties to at least 4 witness monuments. If in disagreement with previously established corner, show the distances between the two corners and also indicate the ties to the disputed corner.



(i) I, Dennis Roberts, Registered Land Surveyor *S-1863, hereby certify that the corner location on this record was determined by me or under my direction and control and that this U.S. Public Land Survey Monument Record is correct and complete to the best of my knowledge and belief.

Dennis B. Roberts
 Signature

05-06-02
 Date



3608 213225

Index No. 2-0, 10-11