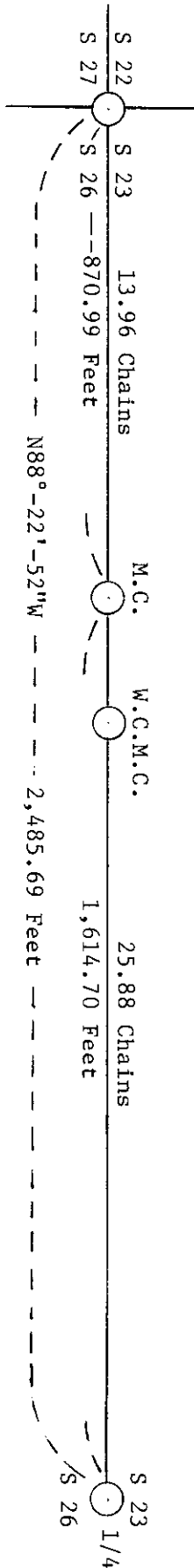


PROPORTIONAL DISTANCES USED FROM GLO CORNERS EAST AND WEST TO RESTORE MEANDER CORNER



REGISTER OF DEEDS OFFICE
 ONEIDA COUNTY, WIS.
FILED
 DEC 12 1990
 At _____ O'Clock _____ M
THOMAS H. LEIGHTON
 REGISTER OF DEEDS