



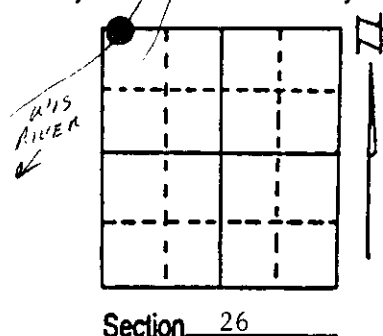
# U.S. PUBLIC LAND SURVEY MONUMENT RECORD

Note: This form is intended and designed to fulfill all requirements of Wisconsin Administrative Code, Chapter A-E 7.08 U.S. Public Land Survey Monument Record (3) (a) (b) (c) (d) (e) (f) (g) (h) (i). An additional sheet may be added if necessary to conform with said requirements.

(a) Corner location: Township 36 North  
 Range 8 East/West

Town/City/Village Crescent

County Oneida



(b) (f) (g) (h) Description of monument found at this corner and if it was accepted, state all evidence (material, testimonial, occupational, plats, records, other monuments) used as a basis for accepting. If not accepted or if nothing was found, state evidence used as basis for establishing location. If reestablished through lost corner proportionate methods, indicate all monuments, distances and directions used to establish. Indicate type of monument found or set and sign post.

1863 - Meander Corner established by Wm. Daugherty - set wood post and two BTs:  
 10" Red Pine, S67°W, 21 Links      12" Red Pine, N33°W, 63 Links

1/4/1989 - I erroneously recorded this corner as the original M.C.

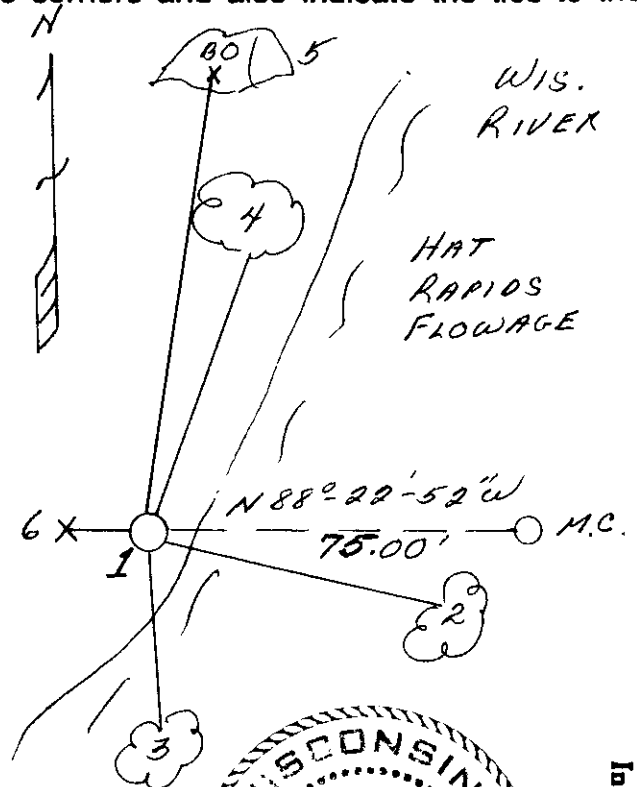
May 1990 - By survey we find the above restored corner to be unreasonable and destroy it. We find the original Meander Corner to be in Hat Rapids Flowage and, therefore, restored the M.C. by proportionate measure along the Section Line and establish a Witness Corner Meander Corner Westerly 75.00 feet. We placed an aluminum county monument for W.C.M.C.; made new BTs and set plastic sign post.

See reverse side for proportional distances.

(c) (d) (e) Plan view of corner with ties to at least 4 witness monuments. If in disagreement with previously established corner, show the distances between the two corners and also indicate the ties to the disputed corner.

- 1) 2" x 36" aluminum county monument (W.C.M.C.)
- 2) 6" Red Maple, S83°E, 14.91 feet
- 3) 5" Red Maple, S02°E, 14.44 feet
- 4) 11" White Pine, N11°E, 74.75 feet
- 5) 9.5' x 6.6' x 5' Gray Granite Boulder with "BOX" on surface, N7½°E, 140.10 feet
- 6) Plastic sign post, West, 1.9 feet

Distances to nail in side of BTs.  
 Stump blaze scribed "BT".



(i) I, Milo E. Stefan  
 (type or print name) certify that the corner location on this record was determined by me or under my direction and control and that this U.S. Public Land Survey Monument Record is correct and complete to the best of my knowledge and belief.

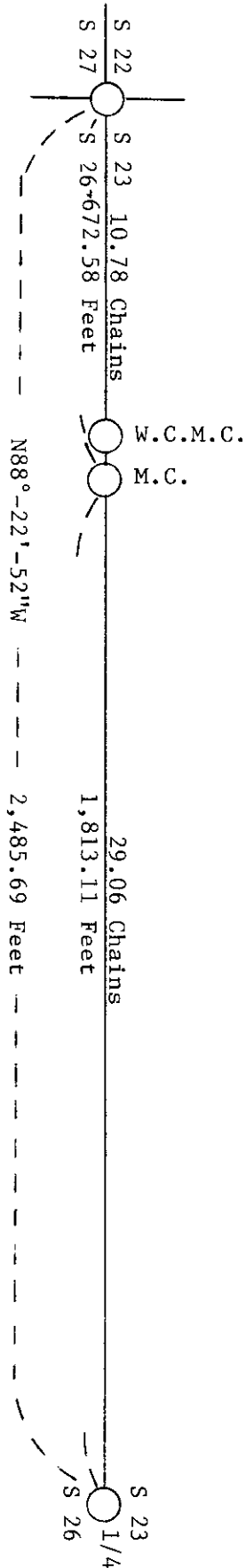
Milo E. Stefan      12/5/90  
 Signature      Date



Index No. R-17, 18

Stamp  
 3608230038

PROPORTIONAL DISTANCES USED FROM GLO CORNERS EAST AND WEST TO RESTORE  
MEANDER CORNER



REGISTER OF DEEDS OFFICE  
ONEIDA COUNTY, WIS.

**FILED**

DEC 12 1990

At \_\_\_\_\_ O'Clock \_\_\_\_\_ M  
THOMAS H. LEIGHTON  
REGISTER OF DEEDS