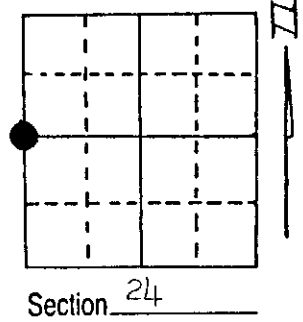


# U.S. PUBLIC LAND SURVEY MONUMENT RECORD

Note: This form is intended and designed to fulfill all requirements of Wisconsin Administrative Code, Chapter A-E 5.02, U.S. Public Land Survey Monument Record (3) (a) (b) (c) (d) (e) (f) (g) (h) (i). An additional sheet may be added if necessary to conform with said requirements.

(a) Corner location: Township 36 North  
 Range 8 East  
 Town/City/Village Crescent  
 County Oneida



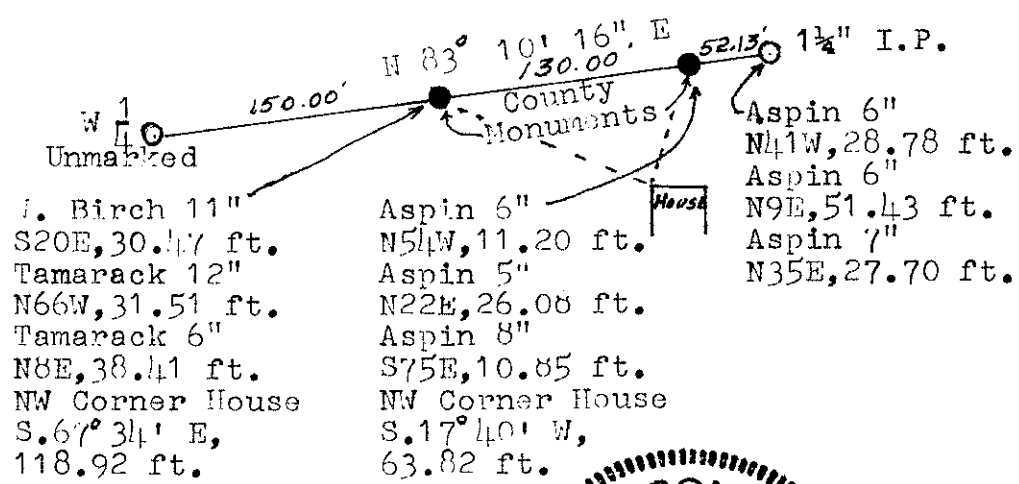
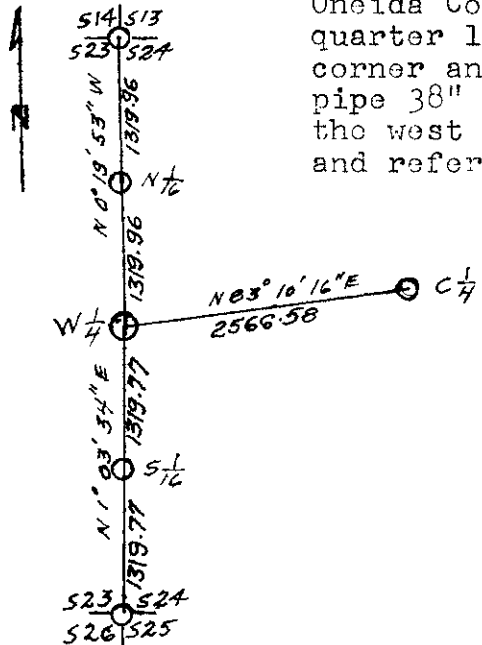
(b) (f) (g) (h) Description of monument found at this corner and if it was accepted, state all evidence (material, testimonial, occupational, plats, records, other monuments) used as a basis for accepting. If not accepted or if nothing was found, state evidence used as basis for establishing location. If reestablished through lost corner proportionate methods, indicate all monuments, distances and directions used to establish.

1863 William E. Daugherty North between Sec 23 & 24, 40.0 chains set post for  $\frac{1}{4}$  cor. Spruce 8, N2 $\frac{1}{2}$ W, 515 lks. 57.6 chains creek 7 lks, runs west.  
 1905 D.H. Vaughn run line from  $\frac{1}{4}$  cor. south to sec. cor.  
 1957 Highway Dept. show corner as being 15 ft.± west of center line.  
 1959 Norman Loftnus run east from  $\frac{1}{4}$  cor. to establish center  $\frac{1}{4}$  Center  $\frac{1}{4}$ , N80° 50' E, 39.135 chains (2582.91 ft)  
 Found: No evidence of  $\frac{1}{4}$  cor. 1974 revised highway plan shows corner to be 15' west of center line and under 12' of fill.  
 Section corners monumented by William Immich in place.  
 Angle iron at South one sixteenth, no record.  
 Stream 3747 ft (56.8 ch.) north of south section cor.

I located  $\frac{1}{4}$  cor. by using the south Sec. Cor. and the south 1/16 and projecting the line north twice the distance. This position falls 2639.54 ft. north of SW Sec. Cor. 2639.92 ft. south of NW Sec. Cor. and 13 ft. west of the center line highway. Straight line location would place cor. 45 ft. west of center line highway.

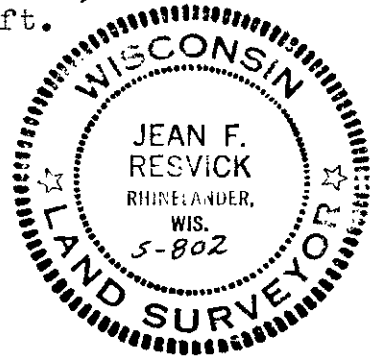
(c) (d) (e) Plan view of corner with ties to at least 4 witness monuments. If in disagreement with previously established corner, show the distances between the two corners and also indicate the ties to the disputed corner.

The quarter corner location being in the Highway, I set 2 Oneida County Monuments as witness corners on the East-West quarter line of Section 24. Monuments are stamped witness corner and the distance to corner shown. A 1 $\frac{1}{4}$ " diam. iron pipe 38" long was also on East-West Quarter line marking the west 10 Acres of the SW $\frac{1}{4}$ , NW $\frac{1}{4}$  of Sec. 24. Bearing trees and references are given to the witness monuments.



(i) I, Jean F. Resvick  
 (type or print name) certify that the corner location on this record was determined by me or under my direction and control and that this U.S. Public Land Survey Monument Record is correct and complete to the best of my knowledge and belief.

Jean F. Resvick Date 6-4-88  
 Signature Date



Index No. P-21

3608232000

# U.S. PUBLIC LAND SURVEY MONUMENT RECORD

Note: This form is intended and designed to fulfill all requirements of the Wisconsin Administrative Code, Chapter A-E 7.08 U.S. Public Land Monument Record (3)(a)(b)(c)(d)(e)(f)(g)(h)(i). An additional sheet may be added if necessary to conform with said requirements.

REGISTER OF DEEDS OFFICE  
ONEIDA COUNTY  
FILED

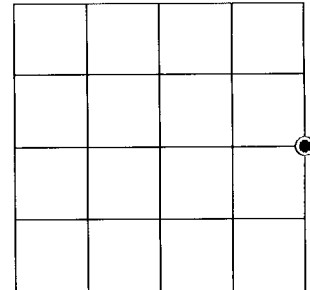
FEB 06 2020

KYLE J. FRANSON  
REGISTER OF DEEDS

(a) CORNER LOCATION: WISCORS - Oneida County  
 East Quarter Corner of Section 23 North: 147763.812 US ft  
 Township 36 North East: 254429.956 US ft  
 Range 8 East Datum: NAD 83(2011)  
 Town of Crescent GNSS Method: RTK - Direct  
 County of Oneida GNSS Control: WISCORS VRS

(RECORDING AREA)

SECTION 23



(b) HISTORY OF ORIGINAL CORNER ESTABLISHMENT

Original Surveyor:  
 Date of Survey: Commenced *SEE PREVIOUS U.S.P.L.S. MONUMENT*  
 Completed *RECORD DATED JUNE 4, 1988.*  
 Original B.T.'S

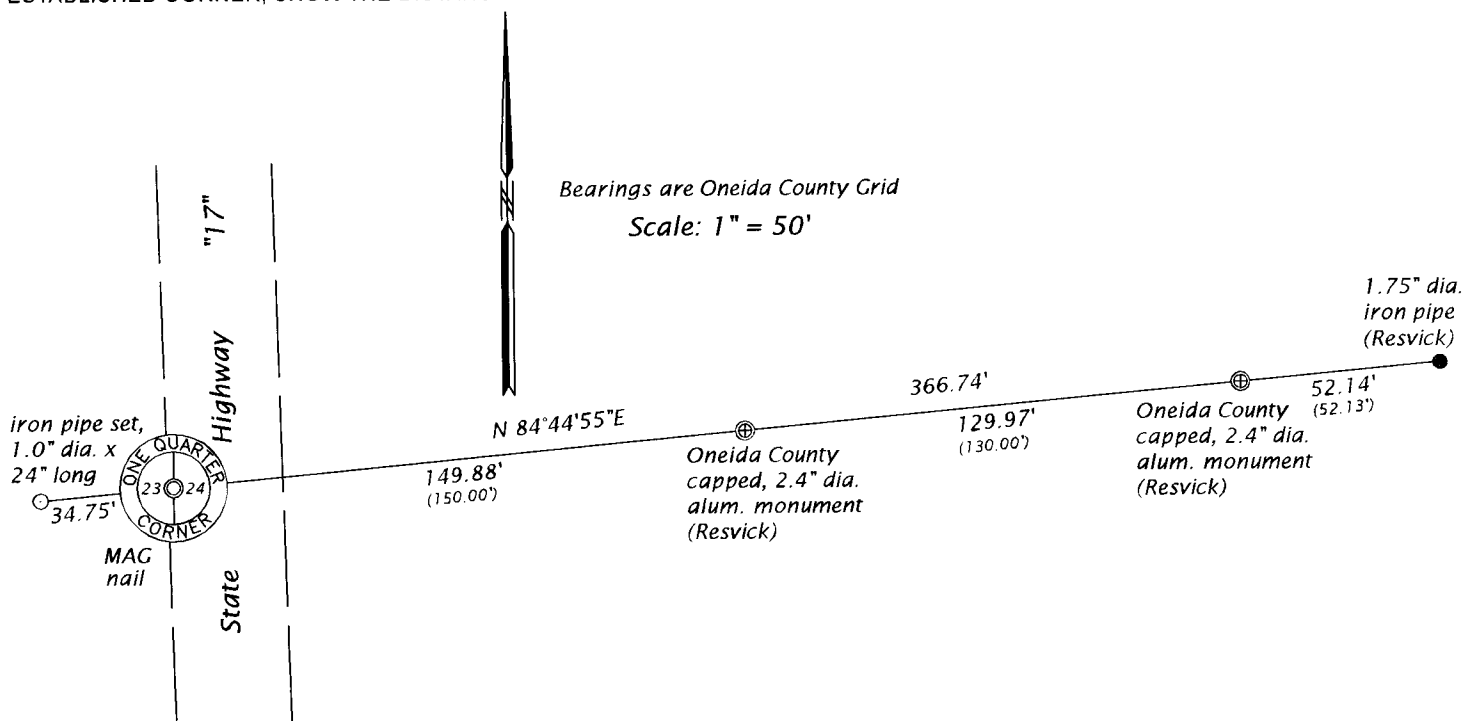
(f)(g)(h) DESCRIPTION OF MONUMENT FOUND AT THIS CORNER AND IF IT WAS ACCEPTED, STATE ALL EVIDENCE (MATERIAL, TESTIMONIAL, OCCUPATIONAL, PLATS, RECORD, OTHER MONUMENTS) USED AS A BASIS FOR ESTABLISHING LOCATION. IF NOT ACCEPTED OR IF NOTHING WAS FOUND, STATE EVIDENCE USED AS BASIS FOR ESTABLISHING LOCATION. IF REESTABLISHED THROUGH LOST CORNER PROPORTIONATE METHODS, INDICATE ALL MONUMENTS, DISTANCES AND DIRECTIONS USED TO ESTABLISH. INDICATE TYPE OF MONUMENT AND SIGN POST FOUND OR SET.

This is a perpetuation of a previous U.S.P.L.S. Monument Record by Jean F. Resvick, RLS, dated June 4, 1988, and filed in the office of the Oneida County Register of Deeds. A complete history of the corner can be found on the previous monument record. I accept the previous location as a true and faithful perpetuation or reestablishment of the original corner location and further perpetuate it as follows.

June 14, 2019, I, James D. Rein, P.L.S. No. S-1234, found and accepted a MAG nail in the pavement of State Highway "17" set by William Badow in 2009, see Oneida County Surveyor's Map No. B7220. The MAG nail aligns very well with the two Oneida County monuments set as witnesses by Resvick. See below for updated witnesses.

The coordinate value shown has been verified by at least one of the following methods: 1) comparison to a previously GPS determined published value; 2) the value is the average of two or more GPS observations at a markedly different time; 3) one or more distances were measured back to the GPS observed corner from temporary GPS observed offset locations.

(c)(d)(e) PLAN VIEW OF CORNER WITH TIES TO AT LEAST 4 WITNESS MONUMENTS. IF IN DISAGREEMENT WITH PREVIOUSLY ESTABLISHED CORNER, SHOW THE DISTANCE BETWEEN THE TWO CORNERS AND ALSO INDICATE THE TIES TO THE DISPUTED CORNER.



(i) I, JAMES D. REIN, PROFESSIONAL LAND SURVEYOR NO. S-1234 HEREBY CERTIFY THAT THE CORNER LOCATION ON THIS RECORD WAS DETERMINED BY ME OR UNDER MY DIRECTION AND CONTROL AND THAT THIS U.S. PUBLIC LAND SURVEY MONUMENT RECORD IS CORRECT AND COMPLETE TO THE BEST OF MY KNOWLEDGE AND BELIEF.



*[Handwritten Signature]*  
 SIGNATURE

10-05-19  
 DATE

INDEX NO. *P-21*  
 3608232000