

U.S. PUBLIC LAND SURVEY MONUMENT RECORD

Note: This form is intended and designed to fulfill all requirements of Wisconsin Administrative Code, Chapter A-E 5.02, U.S. Public Land Survey Monument Record (3) (a) (b) (c) (d) (e) (f) (g) (h) (i). An additional sheet may be added if necessary to conform with said requirements.

(a) Corner location: Township 36 North
 Range 8 East/West
 Town/City/Village Crescent
 County Oneida

REGISTER OF DEEDS OFFICE
ONEIDA COUNTY, WIS.

FILED

AUG 14 1987

A. 8:00 O'Clock P.M. DORIS VERAGE KUEHN REGISTER OF DEEDS

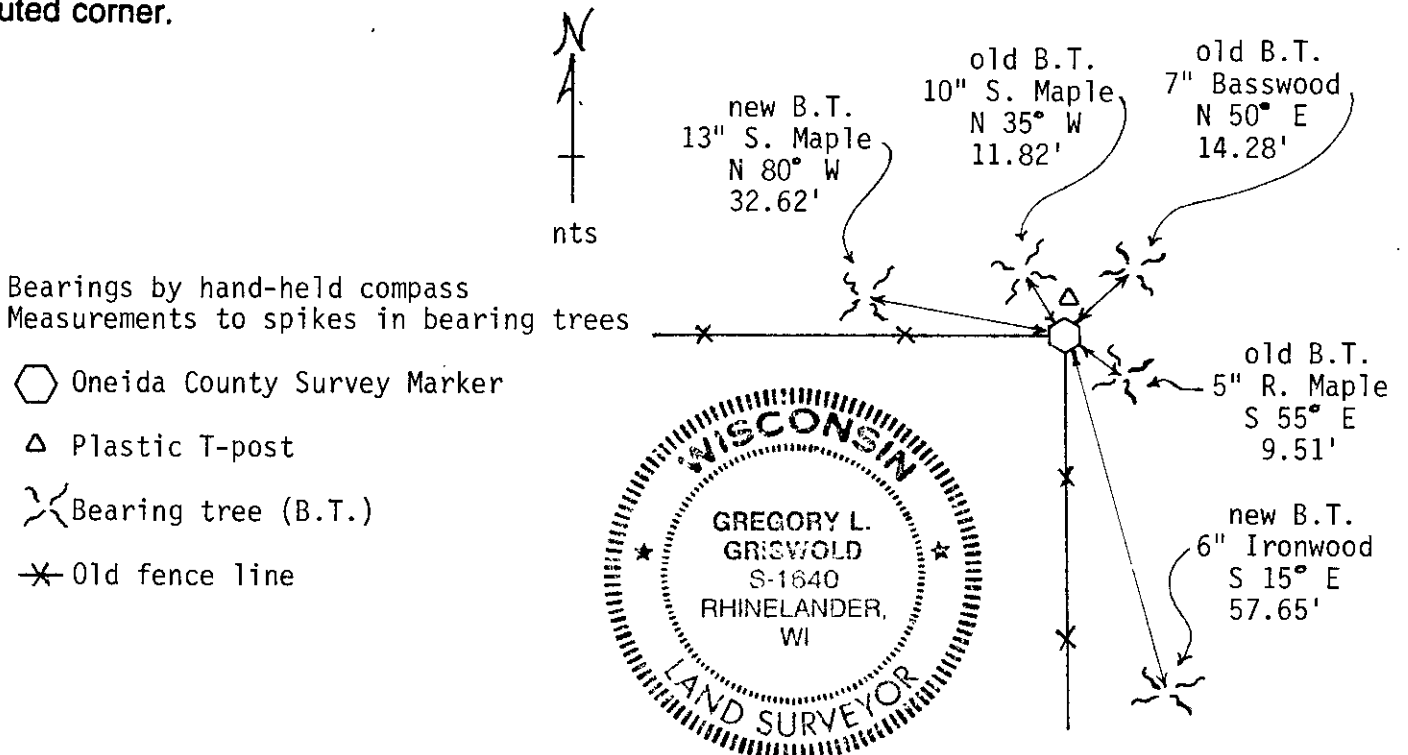
Section 25

(b) (f) (g) (h) Description of monument found at this corner and if it was accepted, state all evidence (material, testimonial, occupational, plats, records, other monuments) used as a basis for accepting. If not accepted or if nothing was found, state evidence used as basis for establishing location. If reestablished through lost corner proportionate methods, indicate all monuments, distances and directions used to establish.

1863 Wm. Daugherty establishes corner
 1960 N. Loftus at corner; perpetuated corner by setting Rhinelander Paper Company (RIPCO) iron pipe monument

Found Loftus RIPCO iron pipe monument, existing blazed and/or scribed bearing trees, and old fence lines extending west and south from the corner. Accepted corner and replaced the RIPCO monument with an Oneida County Survey Marker with a scribed cap and witnessed as shown below.

(c) (d) (e) Plan view of corner with ties to at least 4 witness monuments. If in disagreement with previously established corner, show the distances between the two corners and also indicate the ties to the disputed corner.



(i) I, Gregory L. Griswold
 (type or print name) certify that the corner location on this record was determined by me or under my direction and control and that this U.S. Public Land Survey Monument Record is correct and complete to the best of my knowledge and belief.

Gregory L. Griswold 7/2/87
 Signature Date

Index No. R-23

3608240020