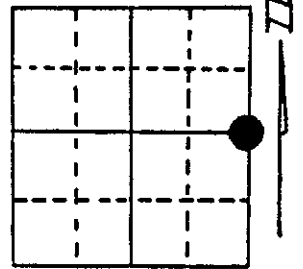


# U.S. PUBLIC LAND SURVEY MONUMENT RECORD

Note: This form is intended and designed to fulfill all requirements of Wisconsin Administrative Code, Chapter A-E 5.02, U.S. Public Land Survey Monument Record (3) (a) (b) (c) (d) (e) (f) (g) (h) (i). An additional sheet may be added if necessary to conform with said requirements.

(a) Corner location: Township 36 North  
 Range 8 East ~~XXXX~~X  
 Town/City/Village Crescent  
 County Oneida

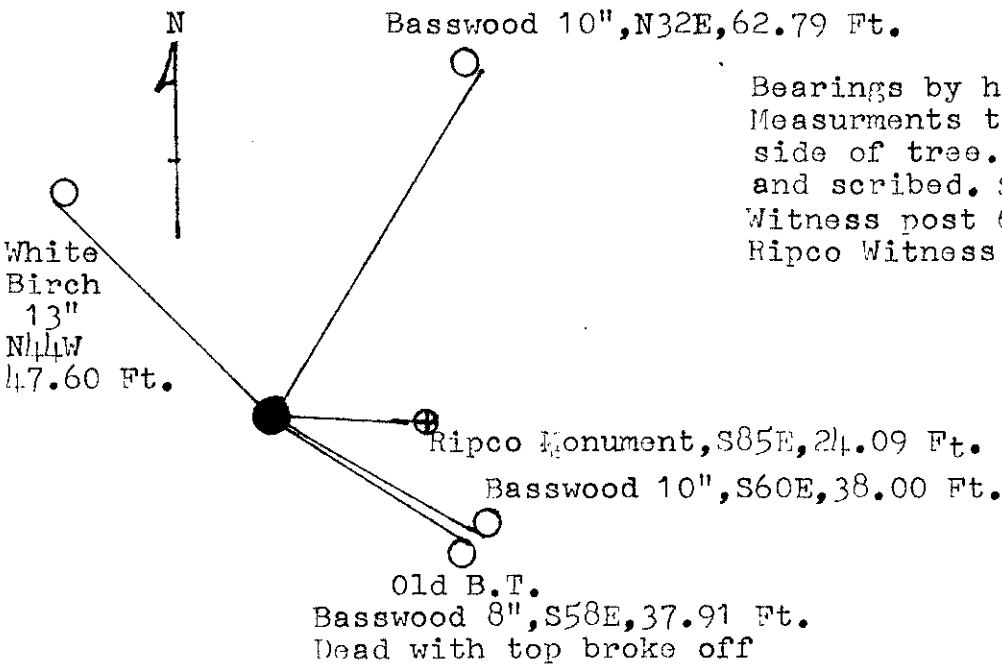


Section 24

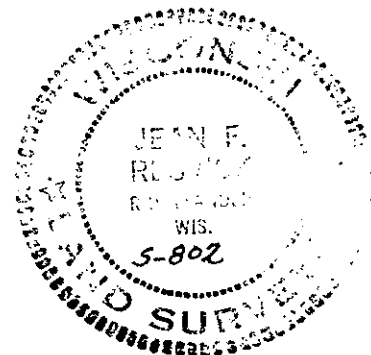
(b) (f) (g) (h) Description of monument found at this corner and if it was accepted, state all evidence (material, testimonial, occupational, plats, records, other monuments) used as a basis for accepting. If not accepted or if nothing was found, state evidence used as basis for establishing location. If reestablished through lost corner proportionate methods, indicate all monuments, distances and directions used to establish.

1859 H.C. Fellows established Corner  
 1953 F.R. Wincontsen found iron pipe, Scribed Basswood 6", S62E, 58 links.  
 Set iron pipe N89E, 38.2 links  
 1959 N. Loftus set Rhinelander Paper Company (RIPCO) iron pipe reference Monument East, 37 links.  
 1988 I, J.F. Resvick found Ripco monument and iron pipe East side of road. Railroad Spike in road, Basswood 8", S58E, 37.91 Ft., dead with top broke off. Ripco monument bears S85E, 24.09 Ft. Iron pipe 24.85 Ft.  
 I accepted the corner as found and replaced the Railroad Spike with an Oneida County Survey Marker stamped to identify corner and witnessed as shown below.

(c) (d) (e) Plan view of corner with ties to at least 4 witness monuments. If in disagreement with previously established corner, show the distances between the two corners and also indicate the ties to the disputed corner.



Bearings by hand held compass  
 Measurements to Cement Nails in side of tree. Trees are blazed and scribed. Set 6 ft. White Witness post 6 inches East of Ripco Witness Monument.



(i) I, Jean F. Resvick S-802  
 (type or print name) certify that the corner location on this record was determined by me or under my direction and control and that this U.S. Public Land Survey Monument Record is correct and complete to the best of my knowledge and belief.

Jean F. Resvick Signature  
April 8, 1988 Date

Index No. P-25

3608242000

This form is intended to fulfill the requirements of Chapter A-E7.08 (3)(a) thru (i) U.S. Public Land Survey Monument Location Record, Wisconsin Administrative Code. Use the reverse side of form for continuation.

**U.S. PUBLIC LAND SURVEY MONUMENT LOCATION RECORD**

USPLS CORNER: EAST 1/4 CORNER SECTION: 24 TOWNSHIP: 36 NORTH RANGE: 8 EAST  
 NAME OF WATERWAY FOR M.C. CORNER : N/A SECTION LINE: N/A  
~~(CITY/VILLAGE/TOWN)~~ OF: CRESCENT COUNTY OF: ONEIDA

Description of monument found or placed and all other evidence used as the basis for monument location; including monuments and measurements required if the corner location was reestablished by lost corner proportionate methods. Also indicate name of the original surveyor, original survey date and the corner monument, bearing trees, witness or other reference monuments established, including measured bearing and distance ties, from available survey records.

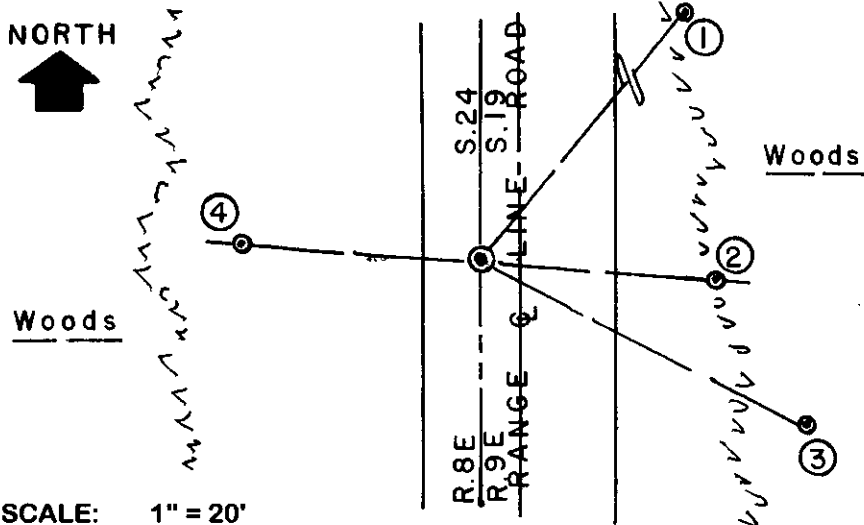
**THIS CORNER REESTABLISHED PER APPROVAL OF ONEIDA COUNTY SURVEYOR MICHAEL ROMPORTL AS RECORD CORNER MONUMENT FOUND BADLY DISTURBED IN EXISTING ROADWAY; See USPLS Monument Location Record by Jean F. Resvick/RLS 802 dated April 8, 1988 as filed in Oneida County records for previous historical chronology and ties.**

Record Oneida County aluminum monument set by Resvick in 1988 found tipped or bent 45° Westerly with cap broken off 5" below existing blacktop mat under a previous black top hole patch about 6 feet West of 20' road mat centerline. I left the badly damaged aluminum monument in place below the blacktop as removal would be very difficult in the roadway.

Ripco capped iron pipe witness monument found OK in a rock cairn at grade East of the corner location and the NE and SE Basswood BTs by Resvick. Using record distances of 37 links/24.42' from the Ripco witness pipe and 38.00' from Resvicks concrete nail in lower right face of his SE Basswood BT, found with a probe thru bark, I reset the corner location in existing blacktop roadway mat with a 1/2" dia. by 4.5" long tapered stainless steel pin with geared top flush for new ties and placed an orange keeled '+' cross at the corner onto the blacktop 4' West of centerline. I patched old hole in roadway mat West of the corner location with blacktop road mix. I also found a yellow painted 1.5" dia. iron pipe with uncapped top 7" up and tipped about 4" SE from plumb, at the NNE edge of Ripco witness pipe rock cairn, which is believed to be the iron pipe set by Wincentsen in 1953 N89°E 38.2 links; however, I did not use due to its disturbed condition.

This recovery completed May 29, 2003 and witnessed by adjoining landowner SE of the corner.

Plan view map of monument location with bearing and distance ties to a minimum of four(4) described witness or reference monuments of concrete, natural stone, iron, live bearing trees or equivalent material. If applicable, also show a minimum of two(2) bearing and distance ties to any other monument found and not accepted; including the bearing and distance from the accepted monument.



- WITNESS MONUMENT TIES:**
- ① Old 12" Basswood BT with upper & lower blazes shut but plain, N39°E 63.62'.
  - ② 1.5" dia. iron pipe found with Ripco 3" square steel plate cap S86°E 24.42'. Std 'T' post found 12" East.
  - ③ Old 10" Basswood BT with upper & lower blazes shut but plain S63°E 38.02'.
  - ④ 5/8" dia. by 24" long rebar set with Reference Mark cap 2" up on top of high roadway cut bank, N86°W 24.50'.
- BT ties to my usual PK/W in right face.

SCALE: 1" = 20'

Unless otherwise indicated, all bearing tree ties are to a .25" dia. by 2.5" long PK nail with a 1.25" dia. steel washer driven into unblazed right face and a .25" dia. by 2.5" long PK nail with a 2" dia. steel washer stamped BT is also driven into unblazed face of bearing tree at DBH; the basis for measured bearings is by compass to nearest degree and all tie distances are measured horizontal by steel tape corrected to nearest 1/100th feet at standard temperature of 68° F.

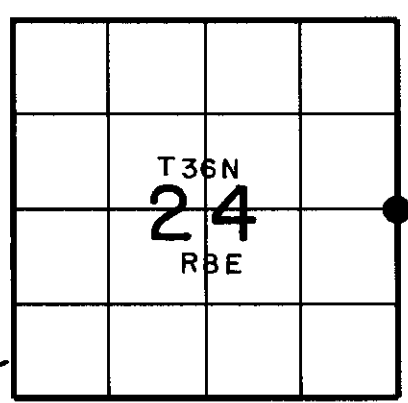
RLS SEAL:



LAND SURVEYOR CERTIFICATE:

I, William C. Rohde, hereby certify that I am duly licensed as a Professional Land Surveyor in the State of Wisconsin; that this USPLS monument location was determined by me and/or under my direct supervision and control; and that this U.S. Public Land Survey Monument Location Record is true and correct to the best of my knowledge and belief.

Signed: *William C. Rohde*  
William C. Rohde RLS 841



SECTION LOCATION MAP  
INDEX NO. P-25