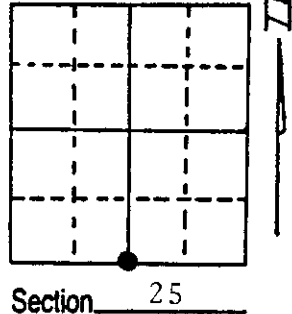


# U.S. PUBLIC LAND SURVEY MONUMENT RECORD

Note: This form is intended and designed to fulfill all requirements of Wisconsin Administrative Code, Chapter A-E 5.02, U.S. Public Land Survey Monument Record (3) (a) (b) (c) (d) (e) (f) (g) (h) (i). An additional sheet may be added if necessary to conform with said requirements.

(a) Corner location: Township 36 North  
 Range 8 East ~~West~~

Town/City/Village Crescent  
 County Oneida



(b) (f) (g) (h) Description of monument found at this corner and if it was accepted, state all evidence (material, testimonial, occupational, plats, records, other monuments) used as a basis for accepting. If not accepted or if nothing was found, state evidence used as basis for establishing location. If reestablished through lost corner proportionate methods, indicate all monuments, distances and directions used to establish.

1863 Wm. Daugherty establishes corner  
 1975 N. Loftus at corner; Certified Survey Map(CSM) vol. 1, pg. 258

Found 1" iron pipe as shown on Loftus CSM and two old, scribed, and blazed bearing trees. Accepted the corner and replaced the 1" iron pipe with a scribed Oneida County Survey Marker(30" long with a plastic base) set 6" below the road surface and witnessed as shown below:

(c) (d) (e) Plan view of corner with ties to at least 4 witness monuments. If in disagreement with previously established corner, show the distances between the two corners and also indicate the ties to the disputed corner.

Bearings by hand-held compass  
 Measurements to spikes in B.T.s  
 Traveled road center line shown

○ Oneida County Survey Marker

△ Plastic T-post

✕ Bearing tree (B.T.)



old B.T.  
 28" W. Pine  
 N 2° W  
 44.86'

old B.T.  
 14" W. Pine  
 N 53° E  
 47.04'

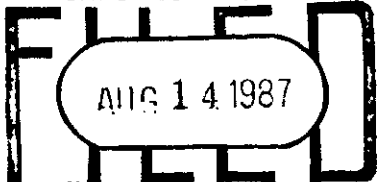
Lassig

Rd.

new B.T.  
 9" Ash  
 S 50° W  
 48.91'

new B.T.  
 8" W. Spruce  
 S 45° E  
 48.45'

REGISTER OF DEEDS OFFICE  
 ONEIDA COUNTY, WIS.



At 2:00 O'Clock PM  
 DORIS VERAGE KUEHN  
 REGISTER OF DEEDS



(i) I, Gregory L. Griswold  
 (type or print name) certify that the corner location on this record was determined by me or under my direction and control and that this U.S. Public Land Survey Monument Record is correct and complete to the best of my knowledge and belief.

Gregory L. Griswold 7/2/87  
 Signature Date

Index No. V-23

3608250020

# ONEIDA COUNTY U.S. PUBLIC LAND SURVEY MONUMENT LOCATION RECORD

SECTION 25  
TOWNSHIP 36 N  
RANGE 8 E

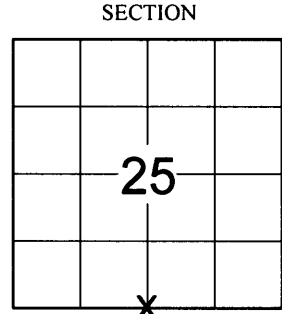
LANDMARK  BENCHMARK \_\_\_\_\_

FOUND   
SET   
RESET   
RE-TIED

CORNER IDENTITY: S1/4 CORNER SEC. 25 BERNTSEN SNM-1 NAIL

CRESCENT  
CITY, VILLAGE, TOWN

ONEIDA COUNTY COORDINATE: N: 139955.5380'  
E: 257039.7730'



ELEVATION-(FEET): \_\_\_\_\_ DATUM: \_\_\_\_\_

WEATHER: PARTLY CLOUDY

DATE OF SURVEY: 10/23/2014 TEMPERATURE: 57 °F

SURVEY PARTY: CHRIS FIERI / KEITH WALKOWSKI

## BASIS FOR MONUMENT LOCATION:

(DESCRIBE METHOD OF SURVEY AND CORNER AUTHENTICATION)

1863 - William Daugherty established the original corner.  
1975 - N. Loftus visited the corner; Certified Survey Map Volume 1 Page 258.

7/2/1987 - Gregory L. Griswold S-1040 recovered a 1" iron pipe as shown on the Loftus CSM and two old, scribed, and blazed bearing trees. He accepted the iron pipe as the corner location and replaced it with a 30" long scribed Oneida County Survey Marker 6" below the road surface. He set two (2) new bearing trees to perpetuate the corner location.

10/9/2014 - I visited this corner location and recovered the two (2) old bearing trees to the North shown on the previous corner restoration form. No monument was found at the corner as Lassig road had recently been resurfaced. The spikes in the bearing trees were badly overgrown. I used survey information from a plat of survey performed by Genisot and Associates (Map #B5781) at which time they recovered a P.K. Nail at the corner location. This checked reasonably well with the old bearing trees and checked well with coordinates provided by the Oneida County Surveyor. I set a Berntsen SNM-1 Nail at the corner location and set four (4) witness monuments to perpetuate it's location.



CERTIFIED CORRECT:

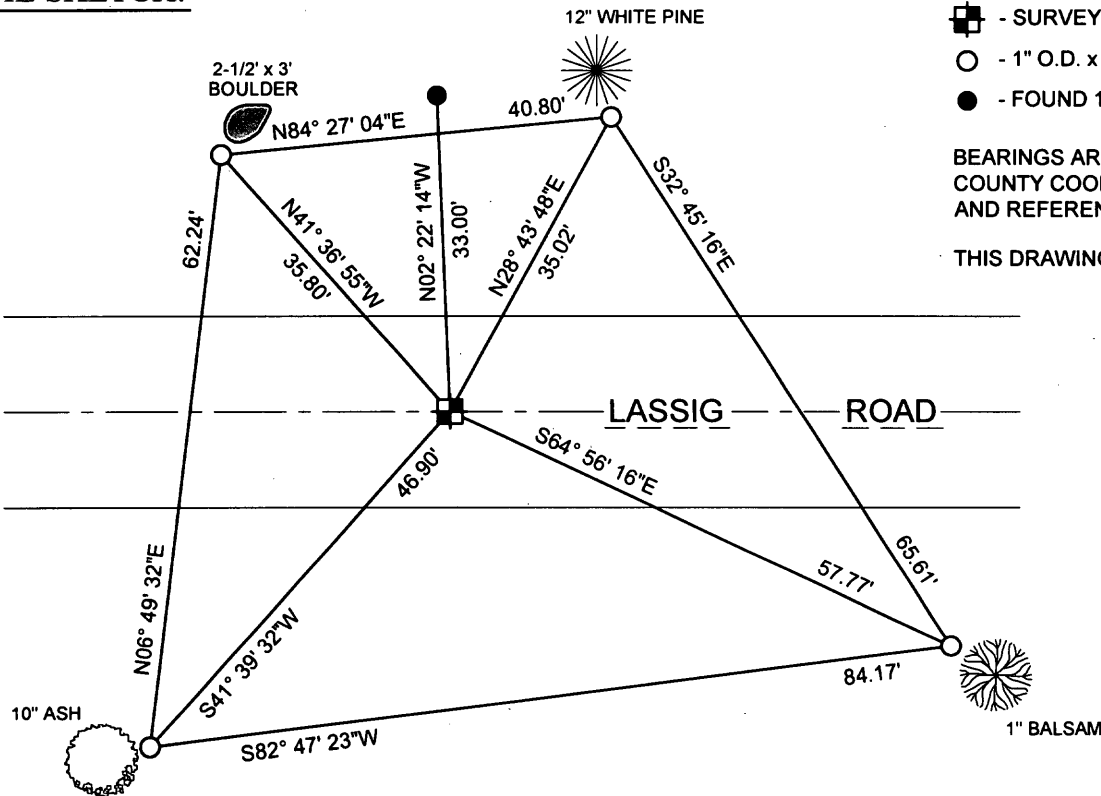
*Christopher L. Fieri*

CHRISTOPHER L. FIERI S-2954

Registered Land Surveyor

DATE: 10-28-2014

## TIE SKETCH:



- SURVEY MARKER PIN (SMP)
- 1" O.D. x 18" IRON PIPE
- FOUND 1" O.D. IRON PIPE

BEARINGS ARE BASED ON THE ONEIDA COUNTY COORDINATE SYSTEM NAD83 (2011) AND REFERENCED AS SHOWN.

THIS DRAWING IS NOT TO SCALE

Index No. V-23

REGISTER OF DEEDS OFFICE  
ONEIDA COUNTY  
FILED

COMPANY RIVERSIDE LAND SURVEYING LLC

3608250020

OCT 29 2014

AT \_\_\_\_\_ O'CLOCK \_\_\_\_\_ M  
KYLE J. FRANSON  
REGISTER OF DEEDS