

U.S. PUBLIC LAND SURVEY MONUMENT LOCATION

Recorders Data

USPLS CORNER: NW SECTION SECTION: 36 TOWNSHIP: 36 NORTH RANGE: 08 EAST

NAME OF WATERWAY FOR M.C. CORNER : N/A SECTION LINE: N/A

~~(CITY)(VILLAGE)(TOWN)~~ OF: CRESCENT COUNTY OF: ONEIDA

Description of monument found or placed and all other evidence used as the basis for monument location; including monuments and related measurements required if the corner location was reestablished by lost corner proportionate methods. Also indicate name of original surveyor, original survey date and the corner monument, bearing trees, witness or other reference monuments established; including measured bearing and distance ties, from available records.

THIS CORNER REREFERENCED WITH APPROVAL OF ONEIDA COUNTY SURVEYOR MICHAEL ROMPORTL DUE TO INADEQUATE REMAINING REFERENCES PER USPLS LOCATION RECORD BY GREGORY L. GRISWOLD/RLS 1640 DATED JULY 2, 1987.

Found and accepted the location of a PK masonry nail in blacktop pavement above the center of a standard Oneida County capped aluminum monument set below grade and verified from remaining ties per foregoing location record, which is also referred to herewith for previous historical documentation.

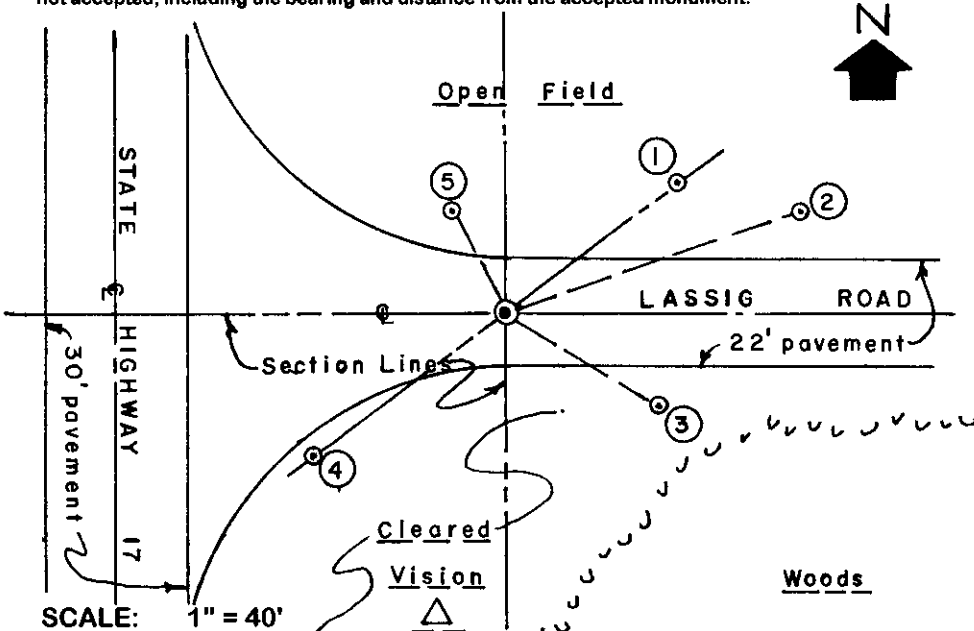
I also found the NW and SE iron pipe witness monuments per the foregoing location record and set a standard yellow poly Reference cap in the top of each for new ties; the NW witness iron pipe is tipped North. The Pw BT South of corner per the 1987 location record is now obliterated within a cleared vision triangle area SE of roadways intersection.

I set a standard white poly 'T' marker post 7" NE of new NE iron pipe witness monument set per ties below.

Corner is 82 feet East of the pavement centerline of STH 17 and on the pavement centerline of Lassig Road East of STH 17. The NE & SW witness monuments are set on a right transit line thru corner monument center.

This recovery completed June 29, 2000; there were no direct witnesses other than vehicle drive-bys.

Plan view map of monument location with bearing and distance ties to a minimum of four(4) described witness or reference monuments of concrete, natural stone, iron, live bearing trees or equivalent material. If applicable, also show a minimum of two(2) bearing and distance ties to any other monument found and not accepted; including the bearing and distance from the accepted monument.

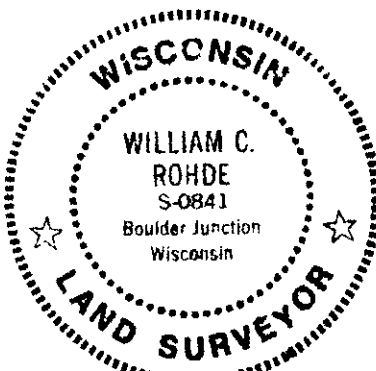


WITNESS MONUMENT TIES:

- ① 3/4" dia. by 24" iron pipe set with standard yellow poly Reference Mark cap flush to grade at N52°E 44.87'.
- ② 40d spike found in right face of power pole per 1987 location record at N70°E 65.26'.
- ③ 1" dia. iron pipe found flush per 1987 location record at S60°E 38.35'.
- ④ 3/4" dia. by 24" long iron pipe set with standard yellow poly Reference Mark cap at grade S52°W 50.14'.
- ⑤ 1" dia. iron pipe found 5" below grade per 1987 location record at N27°W 24.33' to poly cap center.

Unless otherwise indicated, all bearing tree ties are to a .25" dia. by 2.5" long PK nail with a 1.25" dia. steel washer driven into unblazed right face and a .25" dia. by 2.5" long PK nail with a 2" dia. steel washer stamped BT is also driven into unblazed face of bearing tree at DBH; the basis for measured bearings is by compass to nearest degree and all tie distances are measured horizontal by steel tape corrected to nearest 1/100th feet at standard temperature of 68° F.

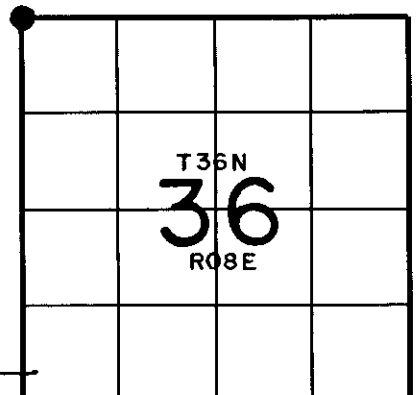
RLS SEAL:



LAND SURVEYOR CERTIFICATE:

I, William C. Rohde, hereby certify that I am duly licensed as a Professional Land Surveyor in the State of Wisconsin; that this USPLS monument location was determined by me and/or under my direct supervision and control; and that this U.S. Public Land Survey Monument Location Record is true and correct to the best of my knowledge and belief.

Signed: *William C. Rohde*
William C. Rohde RLS 841



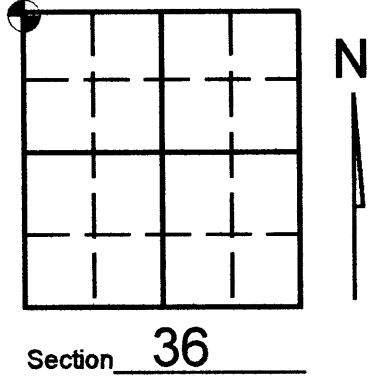
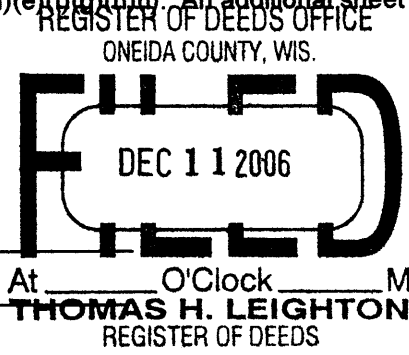
SECTION LOCATION MAP

INDEX NO. 3608260000

U.S. PUBLIC LAND SURVEY MONUMENT RECORD

Note: This form is intended and designed to fulfill all requirements of Wisconsin Administrative Code, Chapter A-E 7.08 U.S. Public Land Survey Monument Record (3)(a)(b)(c)(d)(e)(f)(g)(h)(i). An additional sheet may be added if necessary to conform with said requirements.

(a) Corner location: Township 36 North
 Range 08 (East) West
 Town/City/Village CRESCENT
 County ONEIDA

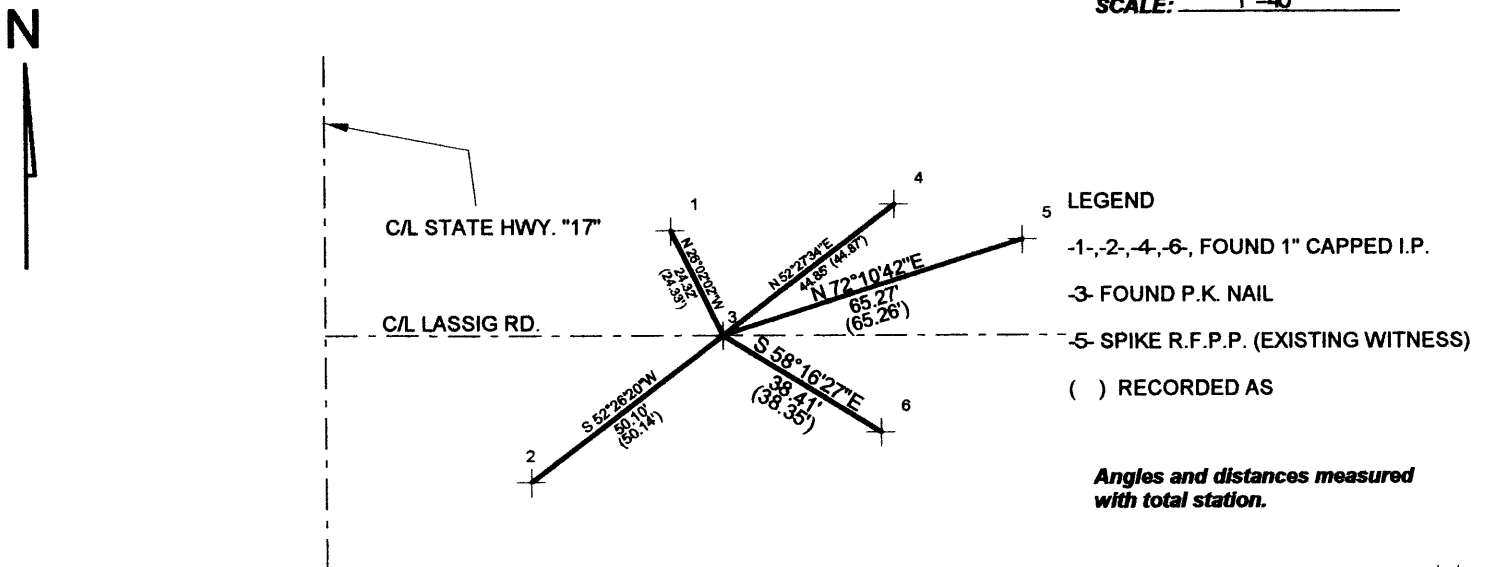


(b) (f) (g) (h) Description of monument found at this corner and if it was accepted, state all evidence (material, testimonial, occupational, plats, records, other monuments) used as a basis for accepting. If not accepted or if nothing was found, state evidence used as basis for establishing location. If reestablished through lost corner proportionate methods, indicate all monuments, distances and directions used to establish. Indicate type of monument found or set and sign post.

POST CONSTRUCTION

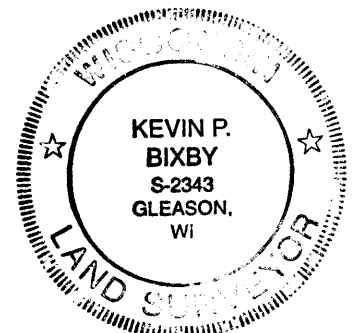
Found p.k. nail as noted on Oneida County restoration sheet V-21 not disturbed.

(c) (d) (e) Plan view of corner with ties to at least 4 witness monuments. If in disagreement with previously established corner, show the distances between the two corners and also indicate the ties to the disputed corner.



(i) I, KEVIN P. BIXBY
 (type or print name) certify that the corner location on this record was determined by me or under my direction and control and that this U.S. Public Land Survey Monument Record is correct and complete to the best of my knowledge and belief.

Kevin P. Bixby Signature 12/08/06 Date



Stamp
 3608260000

Index No. V-21