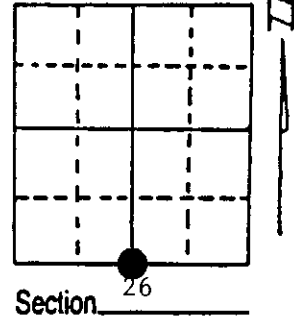
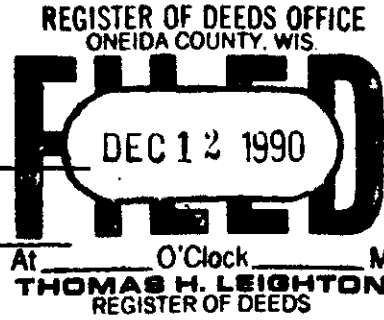


U.S. PUBLIC LAND SURVEY MONUMENT RECORD

Note: This form is intended and designed to fulfill all requirements of Wisconsin Administrative Code, Chapter A-E 7.08 U.S. Public Land Survey Monument Record (3) (a) (b) (c) (d) (e) (f) (g) (h) (i). An additional sheet may be added if necessary to conform with said requirements.

(a) Corner location: Township 36 North
 Range 8 East/West
 Town/City/Village Crescent
 County Oneida



(b) (f) (g) (h) Description of monument found at this corner and if it was accepted, state all evidence (material, testimonial, occupational, plats, records, other monuments) used as a basis for accepting. If not accepted or if nothing was found, state evidence used as basis for establishing location. If reestablished through lost corner proportionate methods, indicate all monuments, distances and directions used to establish. Indicate type of monument found or set and sign post.

1863 - Wm. Daugherty established corner, and set wood post/one BTs:
 16" White Pine, N42½°W, 138 Links No others available

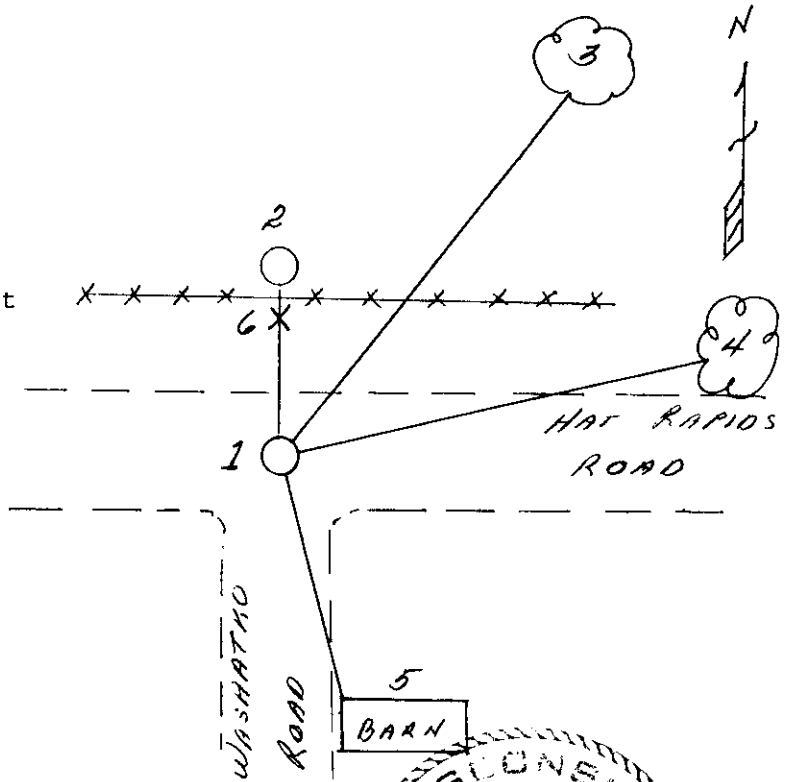
1990 - Corner has been destroyed and lost with road construction. It being reasonable that the roads east - west and south were constructed on the section line east - west and the north - south quarter line to section 35, I therefore restore this corner at the intersection of these roads and place a railroad spike in blacktop surface with reference monument, BTs and plastic sign post.

(c) (d) (e) Plan view of corner with ties to at least 4 witness monuments. If in disagreement with previously established corner, show the distances between the two corners and also indicate the ties to the disputed corner.

- 1) Railroad spike in road surface
- 2) Reference corner - 2" x 36" Oneida County Monument, North, 33.00 feet
- 3) 22" Red Pine, N48°E, 584.54 feet*
- 4) 22" Red Pine, N86°E, 397.07 feet*
- 5) Northwest corner of barn foundation S13°E, 266.69 feet*
- 6) Plastic sign post, North, 32.00 feet

*EDM Distances

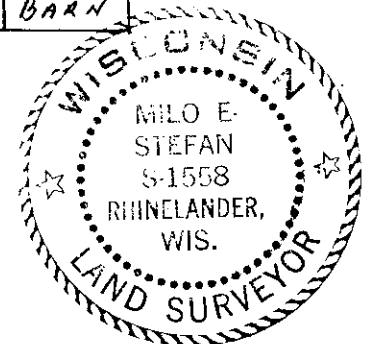
Distances to nail in side of BTs.
 Stump blaze scribed "BT".



(i) I, Milo E. Stefan
 (type or print name) certify that the corner location on this record was determined by me or under my direction and control and that this U.S. Public Land Survey Monument Record is correct and complete to the best of my knowledge and belief.

Milo E. Stefan
 Signature

12/5/90
 Date



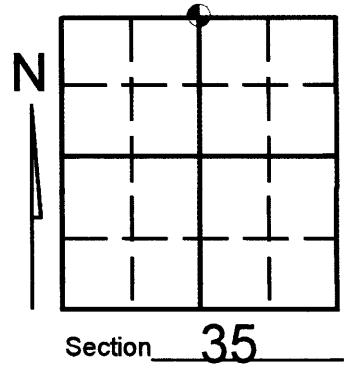
Stamp
 3608260020

Index No. V-19

U.S. PUBLIC LAND SURVEY MONUMENT RECORD

Note: This form is intended and designed to fulfill all requirements of Wisconsin Administrative Code, Chapter A-E 7.08 U.S. Public Land Survey Monument Record (3)(a)(b)(c)(d)(e)(f)(g)(h)(i). An additional sheet may be added if necessary to conform with said requirements.

(a) Corner location: Township 36 North
 Range 08 **East** West
 Town/City/Village CRESCENT
 County ONEIDA



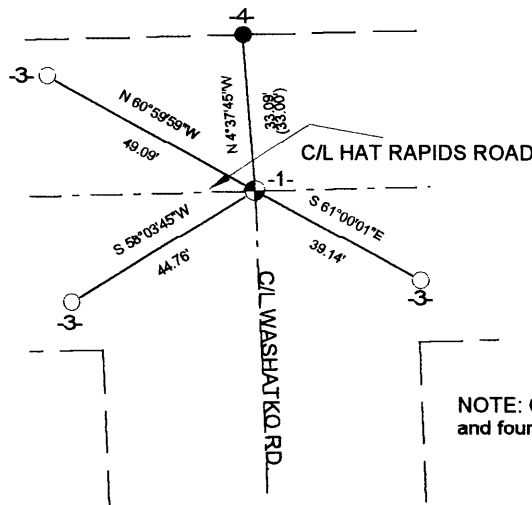
(b) (f) (g) (h) Description of monument found at this corner and if it was accepted, state all evidence (material, testimonial, occupational, plats, records, other monuments) used as a basis for accepting. If not accepted or if nothing was found, state evidence used as basis for establishing location. If reestablished through lost corner proportionate methods, indicate all monuments, distances and directions used to establish. Indicate type of monument found or set and sign post.

SEE U.S. PUBLIC LAND SURVEY MONUMENT RECORD DOCUMENT NUMBER V-19 FOR CORNER HISTORY.

(c) (d) (e) Plan view of corner with ties to at least 4 witness monuments. If in disagreement with previously established corner, show the distances between the two corners and also indicate the ties to the disputed corner.

LEGEND

- 1- EXISTING RAILROAD SPIKE
- 3- SET 1" X 24" IRON PIPE
- 4- EXISTING ONEIDA COUNTY MONUMENT AND WHITE PLASTIC POST
- () DISTANCES PER CORNER RESTORATION SHEET V-19



NOTE: Checked status of corner after road construction and found corner and witnesses undisturbed.

(i) I, KEVIN P. BIXBY
 (type or print name) certify that the corner location on this record was determined by me or under my direction and control and that this U.S. Public Land Survey Monument Record is correct and complete to the best of my knowledge and belief.



Index No. V-19

Kevin Bixby
 Signature Date 03/08/04

3608260020