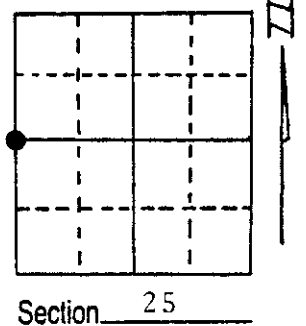


U.S. PUBLIC LAND SURVEY MONUMENT RECORD

Note: This form is intended and designed to fulfill all requirements of Wisconsin Administrative Code, Chapter A-E 5.02, U.S. Public Land Survey Monument Record (3) (a) (b) (c) (d) (e) (f) (g) (h) (i). An additional sheet may be added if necessary to conform with said requirements.

(a) Corner location: Township 36 North
 Range 8 East ~~West~~
 Town/City/Village Crescent
 County Oneida



(b) (f) (g) (h) Description of monument found at this corner and if it was accepted, state all evidence (material, testimonial, occupational, plats, records, other monuments) used as a basis for accepting. If not accepted or if nothing was found, state evidence used as basis for establishing location. If reestablished through lost corner proportionate methods, indicate all monuments, distances and directions used to establish.

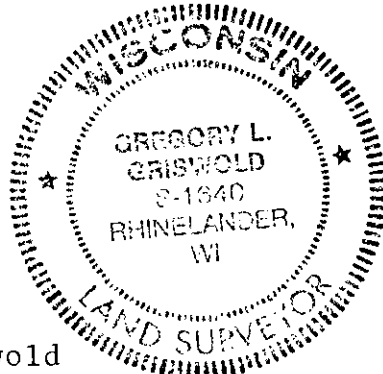
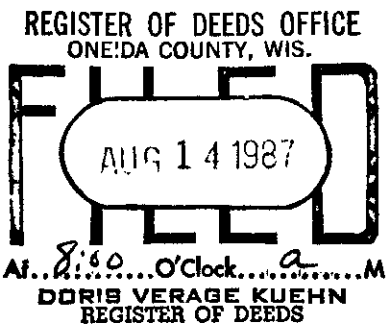
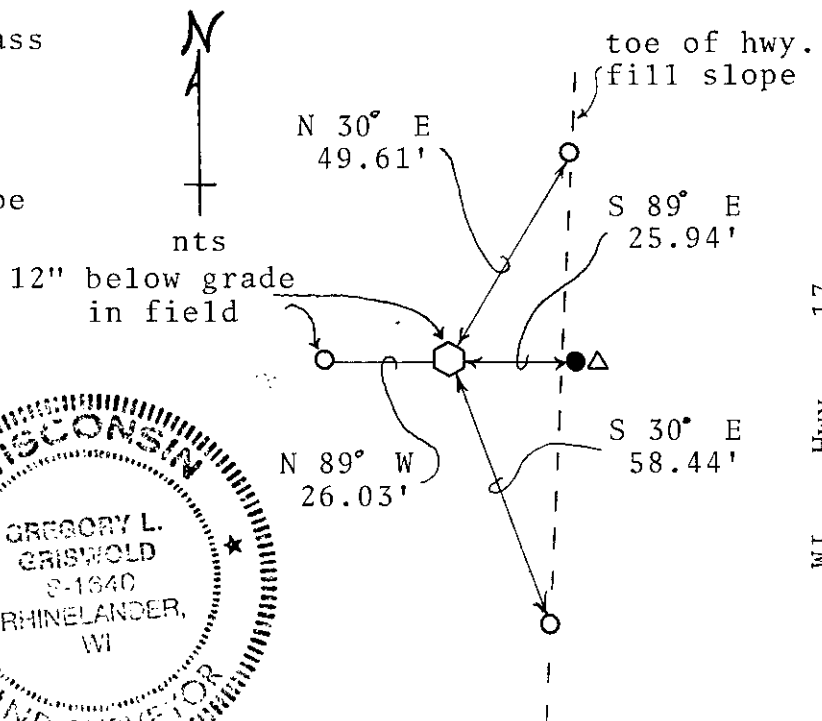
1863 Wm. Daugherty establishes corner
 1900 D.H. Vaughan at corner
 1981 G.L. Griswold (this surveyor) sets corner; Certified Survey Map (CSM) vol. 3, pg. 880&880A

Found 1½" iron pipe (corner) and 1¼" iron pipe (witness, recorded as 1") as shown on Griswold CSM. Corner set in 1981 as follows: No evidence was found at the location of the corner. Willis Nordquist, owner of the land and life-long resident (67 years), could not recall the corner being monumented, but did locate an iron pipe which was reported to be the "center of section 25". Old fence lines ran south and west from this corner. This reported center of section and the east quarter corner of section 25 were used to establish the west quarter which correlated with old fence lines on the west line of section 25. Proportioning was rejected because it didn't match old fence lines. Replaced the 1½" iron pipe with an Oneida Co. Survey Marker witnessed as shown below:

(c) (d) (e) Plan view of corner with ties to at least 4 witness monuments. If in disagreement with previously established corner, show the distances between the two corners and also indicate the ties to the disputed corner.

Bearings by hand-held compass

- ⬡ Scribed Oneida County Survey Marker
- Found 1¼" x 24" iron pipe
- △ Plastic T-post
- Set 1¼" x 24" iron pipe



(i) I, Gregory L. Griswold
 (type or print name) certify that the corner location on this record was determined by me or under my direction and control and that this U.S. Public Land Survey Monument Record is correct and complete to the best of my knowledge and belief.

Gregory L. Griswold 7/2/87
 Signature Date

3608262000

Index No. T-21