

U.S. PUBLIC LAND SURVEY MONUMENT RECORD

Note: This form is intended and designed to fulfill all requirements of Wisconsin Administrative Code, Chapter A-E 7.08 U.S. Public Land Survey Monument Record (3) (a) (b) (c) (d) (e) (f) (g) (h) (i). An additional sheet may be added if necessary to conform with said requirements.

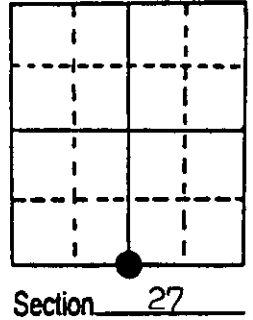
(a) Corner location: Township 36 North

Range 8 East

Town Crescent

County Oneida

REGISTER OF DEEDS OFFICE
ONEIDA COUNTY, WIS
FILED
JUN 11 1990
At O'Clock M
THOMAS H. LEIGHTON
REGISTER OF DEEDS



(b) (f) (g) (h) Description of monument found at this corner and if it was accepted, state all evidence (material, testimonial, occupational, plats, records, other monuments) used as a basis for accepting. If not accepted or if nothing was found, state evidence used as basis for establishing location. If reestablished through lost corner proportionate methods, indicate all monuments, distances and directions used to establish. Indicate type of monument found or set and sign post.

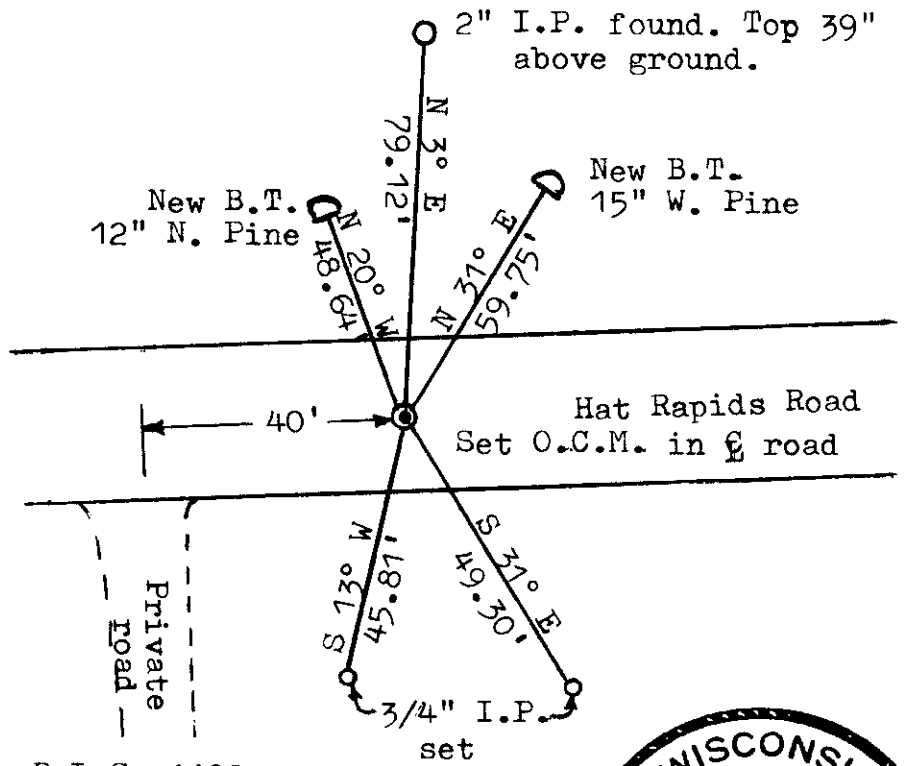
July 1863, Orig. cor. estab. by William E. Daugherty West corrected between Sections 27 & 34, 40.00 set 1/4 Sec. Post, B.T.s Y. Pine 15 N 50 W 15 & Blk Pine 8 S 52 E 59

June 1937, V.M. Maine After estab. east 1/16 on south line, prolonged Sec. Line west & set 1/4 stk between Secs. 27 & 34, Cedar Stk sets on bank of road, Hagen's front yard.

June 1990, I reestablished the corner location by starting at the SE cor. of Sec. 27, thence running westerly to S 1/16 SE cor. of Sec. 27, a 3/4" I. Rod, referenced by Maine's J. Pine N 14 E, thence westerly along sec. line the same distance as between the above 2 corners and set an Oneida County Capped Monument. Set White plastic sign post on south side of road & witnessed the corner as shown below.

(c) (d) (e) Plan view of corner with ties to at least 4 witness monuments. If in disagreement with previously established corner, show the distance between the two corners and also indicate the ties to the disputed corner.

Magnetic bearings
Distance to 6" nail
in side of tree
No scale



(i) I, Lester J. Schmit R.L.S. 1192

(type or print name) certify that the corner location on this record was determined by me or under my direction and control and that this U.S. Public Land Survey Monument Record is correct and complete to the best of my knowledge and belief.

Lester J. Schmit 9 June 90
Signature Date



Stamp

368270020

Index No. V - 15

