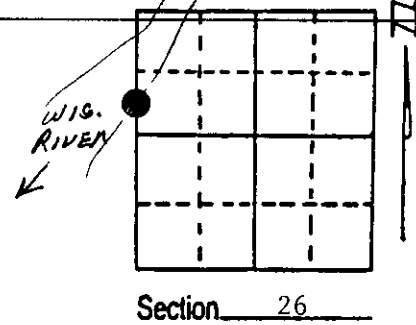


U.S. PUBLIC LAND SURVEY MONUMENT RECORD

Note: This form is intended and designed to fulfill all requirements of Wisconsin Administrative Code, Chapter A-E 7.08 U.S. Public Land Survey Monument Record (3) (a) (b) (c) (d) (e) (f) (g) (h) (i). An additional sheet may be added if necessary to conform with said requirements.

(a) Corner location: Township 36 North
 Range 8 East/West

Town/City/Village Crescent
 County Oneida



(b) (f) (g) (h) Description of monument found at this corner and if it was accepted, state all evidence (material, testimonial, occupational, plats, records, other monuments) used as a basis for accepting. If not accepted or if nothing was found, state evidence used as basis for establishing location. If reestablished through lost corner proportionate methods, indicate all monuments, distances and directions used to establish. Indicate type of monument found or set and sign post.

1863 - Meander corner established by Wm. Daugherty - set a wood post and two BTs:
 15" Aspen, S12°W, 38 Links 8" Aspen, S50°E, 42 Links

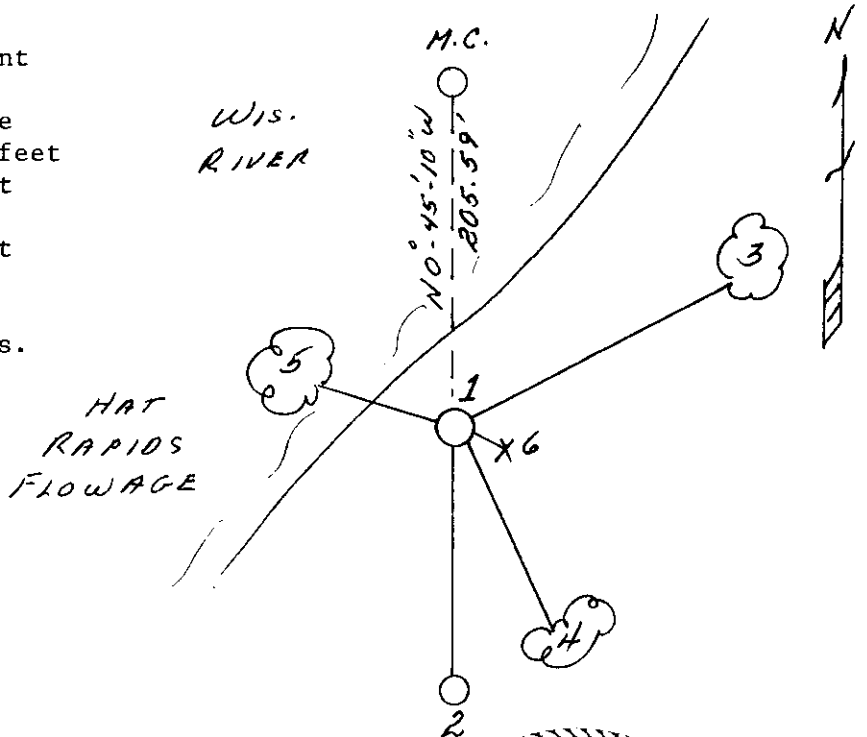
May 1990 - Corner position now falls in flowage created by Hat Rapids Dam. We restored the M.C. position by proportionate measure and established a Witness Corner Meander Corner (W.C.M.C.) on the section line 205.59 feet southerly of the true Meander Corner. We placed a 2" x 36" aluminum county monument for the W.C.M.C. with a 1 1/2" x 30" iron pipe as a reference monument S0°-45'-10"E, 194.26'; three BTs and a plastic sign post.

See reverse for proportional distances.

(c) (d) (e) Plan view of corner with ties to at least 4 witness monuments. If in disagreement with previously established corner, show the distances between the two corners and also indicate the ties to the disputed corner.

- 1) 2" x 36" aluminum county monument (W.C.M.C.)
- 2) 1 1/2" x 30" iron pipe reference monument, S0°-45'-10"E, 194.26 feet
- 3) 12" Red Maple, N51°E, 24.25 feet
- 4) 18" Red Pine, S23°E, 29.82 feet
- 5) 8" White Pine, N80°W, 10.71 feet
- 6) Plastic sign post, SE, 1.5 feet

Distances to nail in side of BTs.
 Stump blaze scribed "BT".



(i) I, Milo E. Stefan
 (type or print name) certify that the corner location on this record was determined by me or under my direction and control and that this U.S. Public Land Survey Monument Record is correct and complete to the best of my knowledge and belief.

Milo E. Stefan
 Signature

12/5/90
 Date

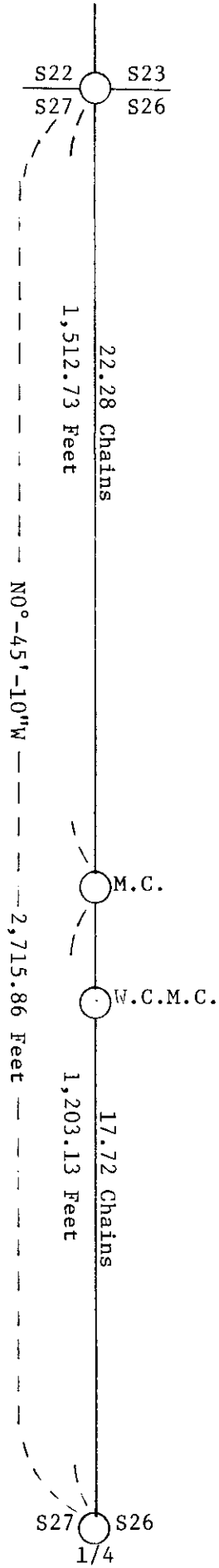


Index No. S, T-17

3608272400

Stamp

PROPORTIONAL DISTANCES USED FROM GLO CORNERS NORTH AND SOUTH TO RESTORE
MEANDER CORNER



REGISTER OF DEEDS OFFICE
ONEIDA COUNTY, WIS.

FILED

DEC 12 1990

At _____ O'Clock _____ M
THOMAS H. LEIGHTON
REGISTER OF DEEDS