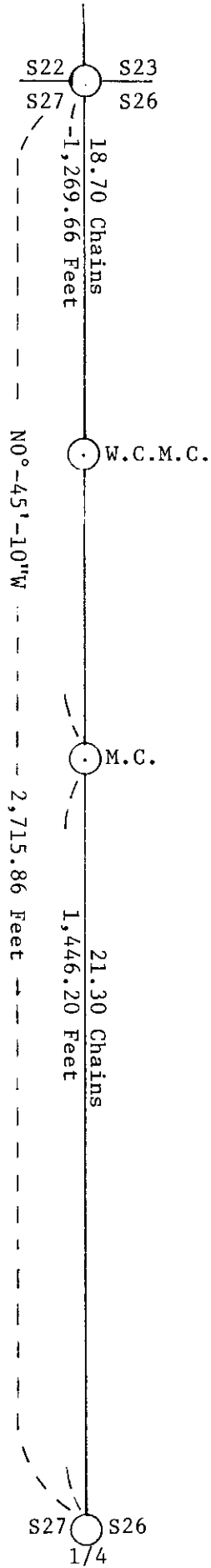




PROPORTIONAL DISTANCES USED FROM GLO CORNERS NORTH AND SOUTH TO RESTORE  
MEANDER CORNER



REGISTER OF DEEDS OFFICE  
ONEIDA COUNTY, WIS.  
**FILED**  
DEC 12 1990  
At \_\_\_\_\_ O'Clock \_\_\_\_\_ M  
THOMAS H. LEIGHTON  
REGISTER OF DEEDS