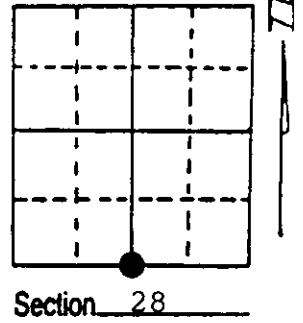


U.S. PUBLIC LAND SURVEY MONUMENT RECORD

Note: This form is intended and designed to fulfill all requirements of Wisconsin Administrative Code, Chapter A-E 7.08 U.S. Public Land Survey Monument Record (3) (a) (b) (c) (d) (e) (f) (g) (h) (i). An additional sheet may be added if necessary to conform with said requirements.

(a) Corner location: Township 36 North
 Range 8 East/West
 Town/City/Village Crescent
 County Oneida



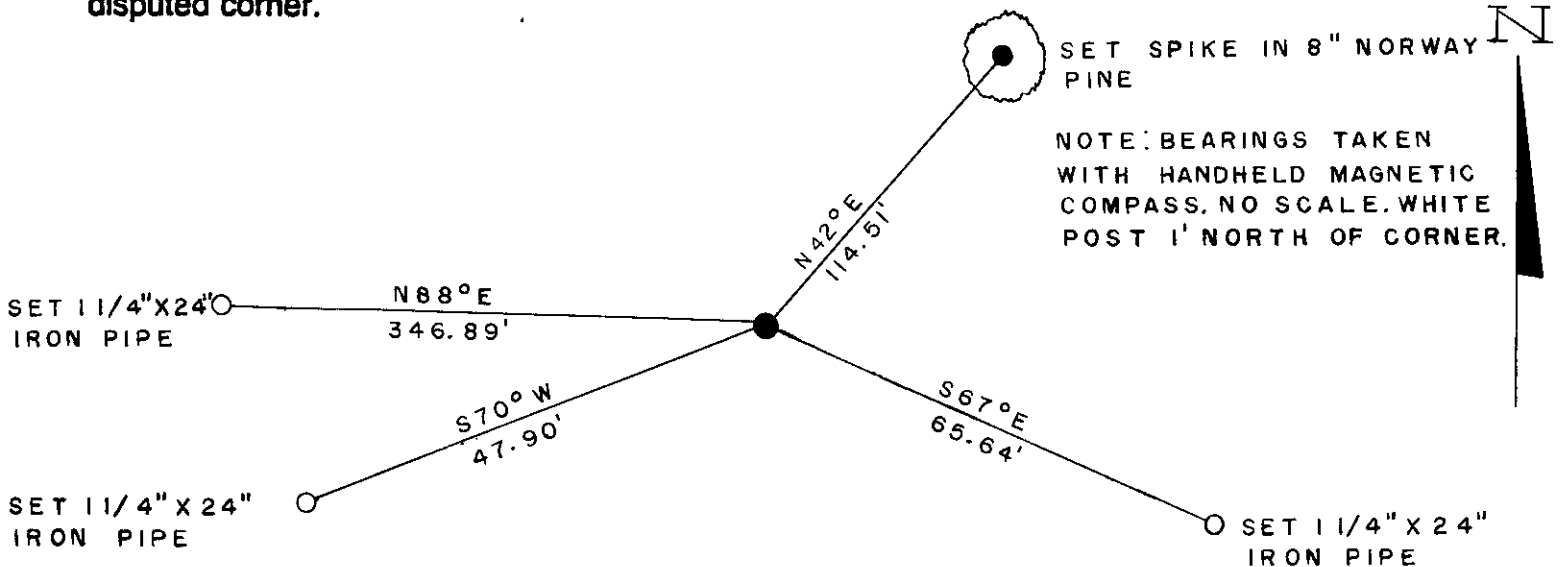
(b) (f) (g) (h) Description of monument found at this corner and if it was accepted, state all evidence (material, testimonial, occupational, plats, records, other monuments) used as a basis for accepting. If not accepted or if nothing was found, state evidence used as basis for establishing location. If reestablished through lost corner proportionate methods, indicate all monuments, distances and directions used to establish. Indicate type of monument found or set and sign post.

1863-William Daugherty set $\frac{1}{4}$ post West between 28 & 33
 40.23 chains set post B.T's Yellow Birch 12" N 81 W
 393 links. No other trees near.

Dorr measures mile at 81.88 chains.

1993-William E. Bandow found well point and set aluminum capped monument. Witnessed as shown below.

(c) (d) (e) Plan view of corner with ties to at least 4 witness monuments. If in disagreement with previously established corner, show the distances between the two corners and also indicate the ties to the disputed corner.



(i) I, _____
 (type or print name) certify that the corner location on this record was determined by me or under my direction and control and that this U.S. Public Land Survey Monument Record is correct and complete to the best of my knowledge and belief.

William E. Bandow 12-29-93
 Signature Date



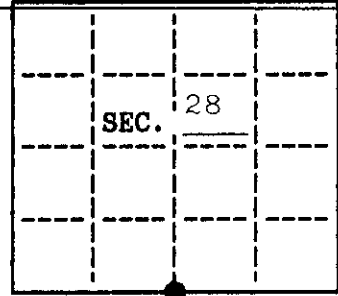
Index No. V-11

3608280020 Stamp

U. S. PUBLIC LAND SURVEY MONUMENT RECORD

Note: This form is intended and designed to fulfill all requirements of Wisconsin Administrative Code, Chapter A-8 7.08 U.S. Public Land Survey Monument Record (3)(a)(b)(c)(d)(e)(f)(g)(h)(i). An additional sheet may be added if necessary to conform with said requirements.

(a) CORNER LOCATION: State Plane Coordinates
 S $\frac{1}{4}$ corner of Sec. 28 X _____
 Township 36 North Y _____
 Range 8 East Datum Base _____
 Town/City Crescent County of Oneida



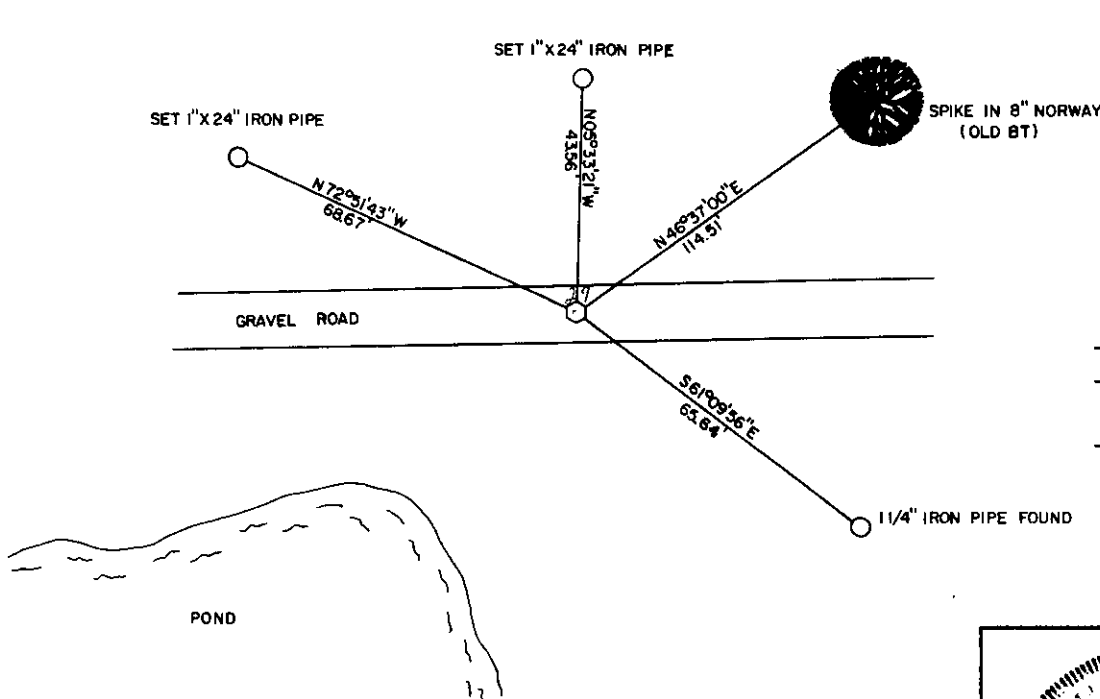
(b) HISTORY OF ORIGINAL CORNER ESTABLISHMENT
 Original Surveyor: William Daugherty
 Date of Survey: Commenced 1863
 Completed 1863

Original B.T.'S
 Yellow Birch 12" N 81 W 393 links
 No other trees near

(b)(f)(g)(h) Description of monument found at this corner and if it was accepted, state all evidence (material, testimonial, occupational, plats, records, other monuments) used as a basis for accepting. If not accepted or if nothing was found, state evidence used as basis for establishing location. If reestablished through lost corner proportionate methods, indicate all monuments, distances and directions used to establish. Indicate type of monument and sign post found or set.

- 1863 Daugherty set $\frac{1}{4}$ post west between 28 & 33 40.23 ch
 Dorr measures mile at 81.88 ch
- 1993 William E. Badow found well point and set aluminum capped monument
 Set 3 witness pipe and 1 B.T. (corner restoration sheet V-11)
- 2002 Russ Brown found gravel road built over corner $\pm 6'$. One witness now
 falls in pond. Found old Norway B.T. and one witness pipe. Set two
 new pipes as shown below.
 Reset corner with FENO marker with 2" bronze cap 4" below surface,
 from existing ties. Corner position checks with G.P.S. coordinates
 from Land Information Office.

(c)(d)(e) Plan view of corner with ties to at least 4 witness monuments. If in disagreement with previously established corner, show the distances between the two corners and also indicate the ties to the disputed.

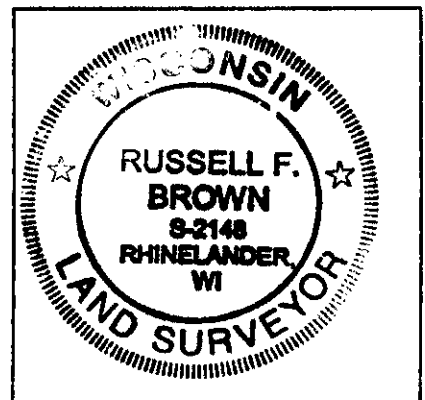


N

- No scale
- Bearings based on Genisot map #10472
- White post 12' north of corner

(i) I, Russell F. Brown
 hereby certify that the corner location on this record was determined by me or under my direction and control and that this U.S. Public Land Survey Monument Record is correct and complete to the best of my knowledge and belief.

Russell F. Brown 11/14/02
 Signature Date



INDEX NO. V-11

3608280020