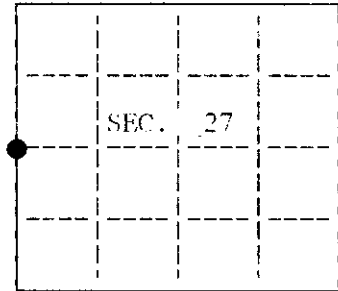


U.S. PUBLIC LAND SURVEY MONUMENT RECORD

Note: This form is intended and designed to fulfill all requirements of Wisconsin Administrative Code, Chapter A-E 7.08 U.S. Public Land Survey Monument Record (2)(a) (b) (c) (d) (e) (f) (g) (h) (i). An additional sheet may be added if necessary to conform with said requirements.

(a) CORNER LOCATION: State Plane Coordinates
 West 1/4 corner of Sec. 27 X N/A
 Township 36 North Y N/A
 Range 8 East Datum Base
 Town/City Crescent County of Oneida

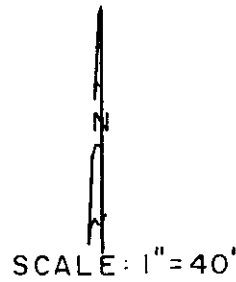
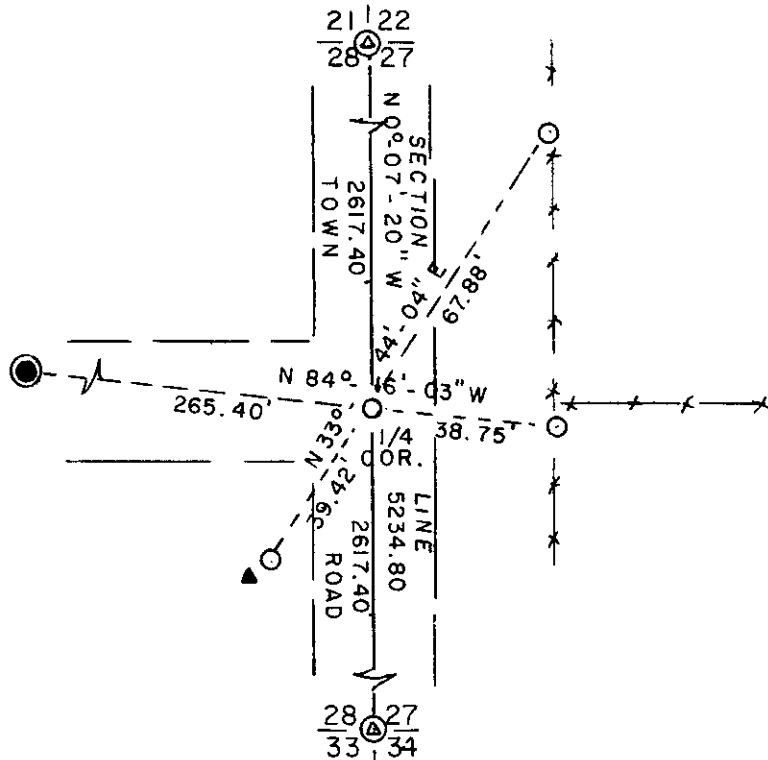


(b) HISTORY OF ORIGINAL CORNER ESTABLISHMENT
 Original Surveyor: William E. Daugherty Original B.T.'S
 Date of Survey: Commenced July 6, 1863 12" Y. Pine N 78° E 33
 Completed July 16, 1863 No other near

(b)(f)(g)(h) Description of monument found at this corner and if it was accepted, state all evidence (material, testimonial, occupational, plats, records, other monuments) used as a basis for accepting. If not accepted or if nothing was found, state evidence used as basis for establishing location. If reestablished through lost corner proportionate methods, indicate all monuments, distances and directions used to establish. Indicate type of monument and sign post found or set.

July, 1939: Hal Craig, surveyor for the General Land Office did not establish and monument the quarter corner position.
 April, 1993: James Will found no evidence of the quarter corner and set a P.K. nail at the proportionate distance between the section corners north and south.
 April 10, 1997: I, Michael Weber found James Will's P.K. nail and replaced it with a 1" iron pipe 4 feet west of the centerline of the town road north and south and in line with the centerline to the west. I also made the additional references shown below.

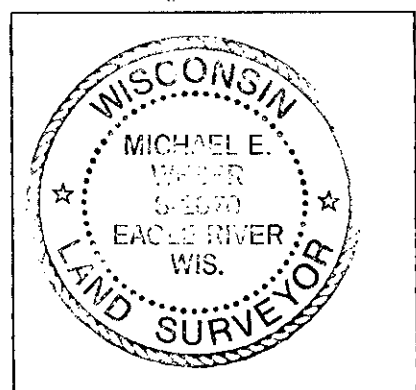
(c)(d)(e) Plan view of corner with ties to at least 4 witness monuments. If in disagreement with previously established corner, show the distances between the two corners and also indicate the ties to the disputed.



- Oneida County Aluminum GPS Monument found in place
- 1" iron pipe set
- ▲ Plastic witness sign post set

(i) I, Michael E. Weber, R.L.S. #2070 hereby certify that the corner location on this record was determined by me or under my direction and control and that this U.S. Public Land Survey Monument Record is correct and complete to the best of my knowledge and belief.

Michael E. Weber
 Signature Date April 16, 1997



INDEX NO. T-13

3608282000