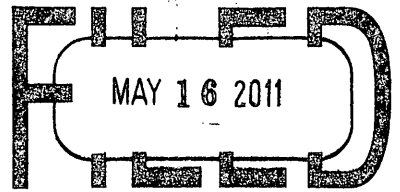


# U.S. PUBLIC LAND SURVEY MONUMENT RECORD

Note: This form is intended and designed to fulfill all requirements of the Wisconsin Administrative Code, Chapter A-E 7.08 U.S. Public Land Monument Record (3)(a)(b)(c)(d)(e)(f)(g)(h)(i). An additional sheet may be added if necessary to conform with said requirements.



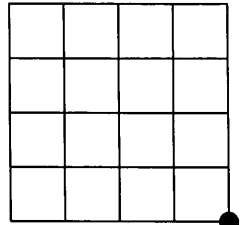
At \_\_\_\_\_ O'Clock \_\_\_\_\_ M  
**THOMAS H. LEIGHTON**  
REGISTER OF DEEDS

(a) CORNER LOCATION:

Southeast corner of Section 29  
Township 36 North  
Range 8 East  
Town of Cresent  
County of Oneida  
Wisconsin

COORDINATES

North: 139981.997  
East: 238698.107  
Control Station: OC 604  
Latitude: 45° 34' 38.16683" N  
Longitude: 89° 29' 25.83263" W  
Datum: NAD-83 (1991)  
Method: RTK Direct



(b) HISTORY OF ORIGINAL CORNER ESTABLISHMENT

Original Surveyor: William E. Daugherty; Set post corner to Section  
Date of Survey: Commenced - July 6th, 1863  
Completed - July 16th, 1863

Original B.T.'S:  
15" Aspen; S 80° W; 22 links  
12" W. Pine; N 61° W; 46 links

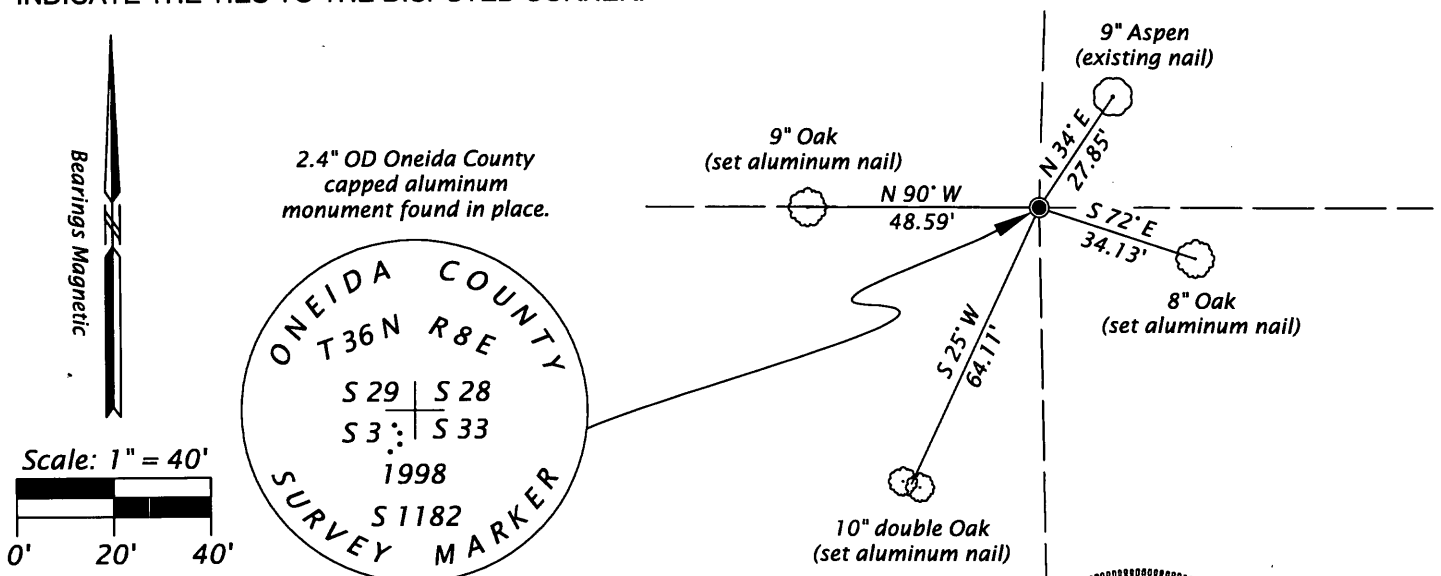
**SECTION 29**

(f)(g)(h) DESCRIPTION OF MONUMENT FOUND AT THIS CORNER AND IF IT WAS ACCEPTED, STATE ALL EVIDENCE (MATERIAL, TESTIMONIAL, OCCUPATIONAL, PLATS, RECORDS, OTHER MONUMENTS) USED AS A BASIS FOR ESTABLISHING LOCATION. IF NOT ACCEPTED OF IF NOTHING WAS FOUND, STATE EVIDENCE USED AS BASIS FOR ESTABLISHING LOCATION. IF REESTABLISHED THROUGH LOST CORNER PROPORTIONATE METHODS, INDICATE ALL MONUMENTS, DISTANCES AND DIRECTIONS USED TO ESTABLISH. INDICATE TYPE OF MONUMENT AND SIGN POST FOUND OR SET.

(SEE MORE HISTORY ON REVERSE)

02/22/2011 - I, James D. Rein, Registered Land Surveyor No. S-1234, found a 2.4" OD Oneida County capped aluminum monument, up 7", in place with a white plastic marker post 0.5' south and one (1) existing bearing tree with nail. I made three (3) new bearing trees and referenced to the existing tree as noted in the sketch below.

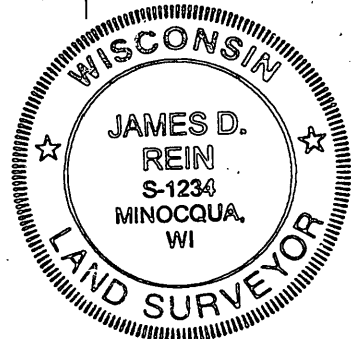
(c)(d)(e) PLAN VIEW OF CORNER WITH TIES TO AT LEAST 4 WITNESS MONUMENTS. IF IN DISAGREEMENT WITH PREVIOUSLY ESTABLISHED CORNER, SHOW THE DISTANCE BETWEEN THE TWO CORNERS AND ALSO INDICATE THE TIES TO THE DISPUTED CORNER.



(i) I, JAMES D. REIN, REGISTERED LAND SURVEYOR NO. S-1234 HEREBY CERTIFY THAT THE CORNER LOCATION ON THIS RECORD WAS DETERMINED BY ME OR UNDER MY DIRECTION AND CONTROL AND THAT THIS U.S. PUBLIC LAND SURVEY MONUMENT RECORD IS CORRECT AND COMPLETE TO THE BEST OF MY KNOWLEDGE AND BELIEF.

*[Handwritten Signature]*

4-23-11  
DATE

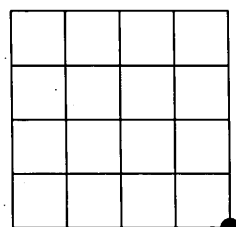


3608290000

INDEX NO. 79

(a) CORNER LOCATION:

Southeast corner of Section 29  
Township 36 North  
Range 8 East  
Town of Crescent  
County of Oneida  
Wisconsin



SECTION 29

(CONTINUED HISTORY)

05/14/1895- B. F. Dorr, County Surveyor, notes at the S.W. Cor. 28; + on Boulder, S 19° E, 28 links, + on Boulder N 53 ½°E, 44 ¾ links, and 8" Pine stub, S 52 ¾° W, 32 ½ links. See Door/Vaughn book, page 78, on file with the Oneida County Surveyor's Office.

03/10/1987 - William H. Stuth, Registered Land Surveyor, prepared field notes for an Owen-Illinois Ownership Boundary Search, dated 09/29/1986, in both Sections 32 and Section 33, indicating found corner by others.

05/20/1998 - Russel F. Brown, Registered Land Surveyor, set an Oneida County Monument at existing fence corner, as shown on survey filed with the Oneida County Surveyor's Office as Map No. C1448.

11/18/2003 - Matthew E. Hogle, Registered Land Surveyor, notes corner as an "Oneida County Aluminum Monument Found" on a survey filed with the Oneida County Surveyor's Office as Map No. B5401.

03/26/2004 - Devon Vanden Heuvel, Registered Land Surveyor, notes corner as a Brass Capped Monument Found on the Plat of Crescent Creek Estates, recorded in Volume 13 OC Plats on page 173.

12/06/2007 - Matthew E. Hogle, Registered Land Surveyor, notes corner as an "Oneida County Aluminum Monument Found" on a survey filed with the Oneida County Surveyor's Office as Map No. C2518.