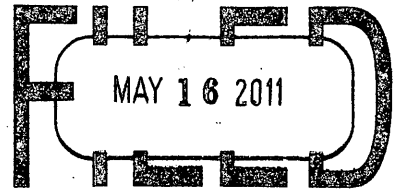


# U.S. PUBLIC LAND SURVEY MONUMENT RECORD

Note: This form is intended and designed to fulfill all requirements of the Wisconsin Administrative Code, Chapter A-E 7.08 U.S. Public Land Monument Record (3)(a)(b)(c)(d)(e)(f)(g)(h)(i). An additional sheet may be added if necessary to conform with said requirements.

REGISTER OF DEEDS OFFICE  
ONEIDA COUNTY, WIS.



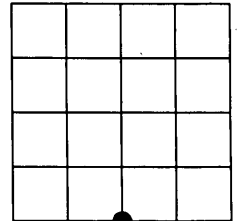
At \_\_\_\_\_ O'Clock \_\_\_\_\_ M  
**THOMAS H. LEIGHTON**  
REGISTER OF DEEDS

**(a) CORNER LOCATION:**

South quarter corner of Section 29  
Township 36 North  
Range 8 East  
Town of Crescent  
County of Oneida  
Wisconsin

**COORDINATES**

North: 139987.114  
East: 236107.549  
Control Station: OC 604  
Latitude: 45° 34' 38.16683" N  
Longitude: 89° 29' 25.83263" W  
Datum: NAD-83 (1991)  
Method: Traverse from RTK offsets



**SECTION 29**

**(b) HISTORY OF ORIGINAL CORNER ESTABLISHMENT**

Original Surveyor: William E. Daugherty; Set quarter Section post  
Date of Survey: Commenced - July 6th, 1863  
Completed - July 16th, 1863

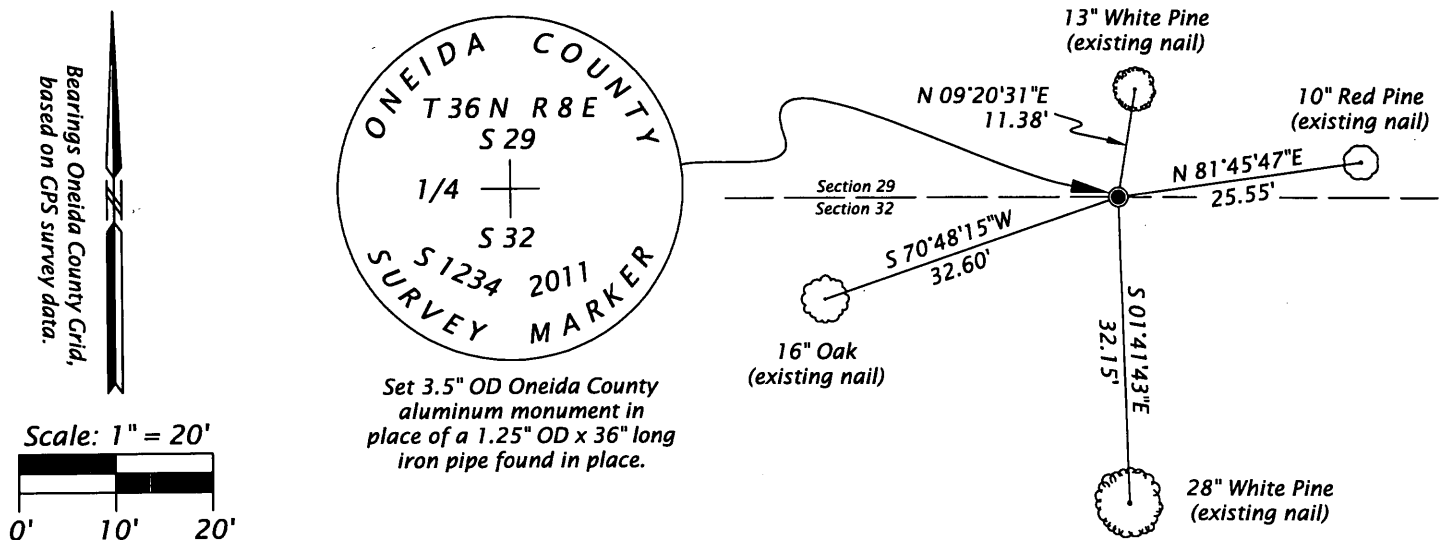
Original B.T.'S:  
10" W. Pine; N 20° W; 23 links  
12" W. Pine; S 37° E; 20 links

(f)(g)(h) DESCRIPTION OF MONUMENT FOUND AT THIS CORNER AND IF IT WAS ACCEPTED, STATE ALL EVIDENCE (MATERIAL, TESTIMONIAL, OCCUPATIONAL, PLATS, RECORDS, OTHER MONUMENTS) USED AS A BASIS FOR ESTABLISHING LOCATION. IF NOT ACCEPTED OF IF NOTHING WAS FOUND, STATE EVIDENCE USED AS BASIS FOR ESTABLISHING LOCATION. IF REESTABLISHED THROUGH LOST CORNER PROPORTIONATE METHODS, INDICATE ALL MONUMENTS, DISTANCES AND DIRECTIONS USED TO ESTABLISH. INDICATE TYPE OF MONUMENT AND SIGN POST FOUND OR SET.

(SEE MORE HISTORY ON REVERSE)

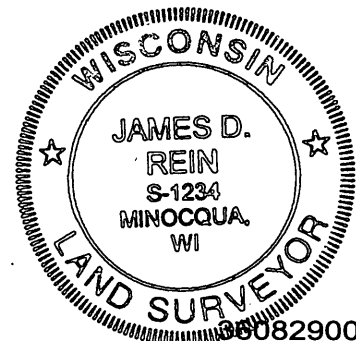
02/23/2011 - I, James D. Rein, Registered Land Surveyor No. S-1234, found a 1.25" OD x 36" long iron pipe with wood post. I set a 3.5" OD x 24" long Oneida County aluminum monument in it's place and referenced four (4) existing bearing trees with nails as noted in sketch below.

(c)(d)(e) PLAN VIEW OF CORNER WITH TIES TO AT LEAST 4 WITNESS MONUMENTS. IF IN DISAGREEMENT WITH PREVIOUSLY ESTABLISHED CORNER, SHOW THE DISTANCE BETWEEN THE TWO CORNERS AND ALSO INDICATE THE TIES TO THE DISPUTED CORNER.



(i) I, JAMES D. REIN, REGISTERED LAND SURVEYOR NO. S-1234 HEREBY CERTIFY THAT THE CORNER LOCATION ON THIS RECORD WAS DETERMINED BY ME OR UNDER MY DIRECTION AND CONTROL AND THAT THIS U.S. PUBLIC LAND SURVEY MONUMENT RECORD IS CORRECT AND COMPLETE TO THE BEST OF MY KNOWLEDGE AND BELIEF.

*James D. Rein* 4/23/11  
SIGNATURE DATE

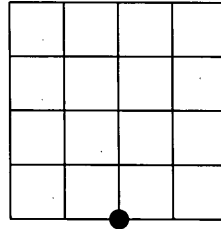


INDEX NO. V 7

0808290020

(a) CORNER LOCATION:

South quarter corner of Section 29  
Township 36 North  
Range 8 East  
Town of Crescent  
County of Oneida  
Wisconsin



SECTION 29

(CONTINUED HISTORY)

1890's? - B. F. Dorr, County Surveyor, notes at the S.  $\frac{1}{4}$  post Section 29; 6" Tamarack, S  $32 \frac{1}{2}^{\circ}$  E, 23 links and a 8" Tamarack stp., S  $30^{\circ}$  W, 39  $\frac{1}{2}$  links. See Door/Vaughn book, page 74, on file with the Oneida County Surveyor's Office.

12/27/1895- D. H. Vaughn, County Surveyor, sets South quarter post from Dorr's random control points. See Door/Vaughn book, page 128, dated 04/20/1900, on file with the Oneida County Surveyor's Office

03/10/1987 - William H. Stuth, Registered Land Surveyor, prepared field notes for an Owen-Illinois Ownership Boundary Search, dated 09/29/1986, in Sections 32, indicating found corner by others, with 7" Aspen, S  $25^{\circ}$  W, 18.3 feet.

09/12/2003 - Devon Vanden Heuvel, Registered Land Surveyor, notes corner as a "1" iron pipe found" on a survey filed with the Oneida County Surveyor's Office as Map No. C1999.

11/18/2003 - Matthew E. Hogle, Registered Land Surveyor, notes corner as a "1" iron pipe found" with "found 4 x 4 wood post next to 1" ip" on a survey filed with the Oneida County Surveyor's Office as Map No. B5401.