

CERTIFIED LAND CORNER RESTORATION

Index No. X-5

State of Wisconsin } ss.  
County of Oneida

I, William E. Bindow, do hereby certify that on the 23rd day of January, 1981, I found evidence of the East 1/4 corner of Section 31 Township 36, North, Range 8 East, Fourth Principal Meridian, as described hereon; and that from this evidence I established a new monument and accessories as described hereon to perpetuate the original location of this corner.

Resident witnesses:

History of original corner establishment:

Corner set by William Daugherty in 1863. North between Sections 31 & 32. 40.00 set post.

BT's Yellow Pine 12" N71°E 111 Links  
No others near

Description of corner evidence found:

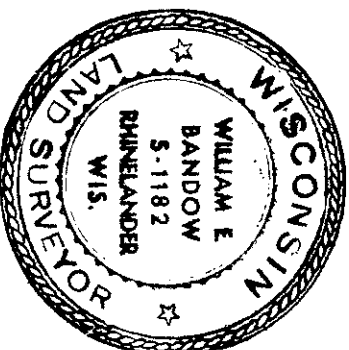
B.F. Dorr recovered corner in 1898 as set by Monsell from original BT's. D.H. Vaughan recovered corner in 1909. R.H. Hall recovered corner in 1934 and set an iron pipe with a square plug in end.  
Found a 2" iron pipe with a square plug in end from which a 14" Maple bears S 66°W 18.0'.

Description of monument and accessories I established to perpetuate the original location of this corner.

Iron pipe with square plug remains in place. Made 2 new BT's.

- White Birch 10" N 74°W 32.4'
- White Birch 8" S 52°E 23.8'

Distances are to center of trees.

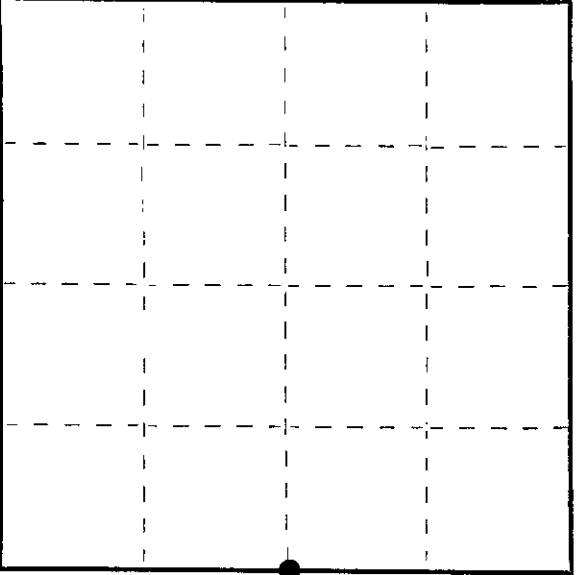


Dated at Rhineland, Wis., this 9th day of February, 1981.

Signature: William E. Bindow Title: Registered Land Surveyor Registration No. S-1182  
(County Surveyor, Registered Land Surveyor, or other duly authorized official)

Office of Register of Deeds, County of Oneida  
Instrument was filed in this office for record on the 11 day of June at 2:24 o'clock P. M. 1981  
I hereby certify that the within

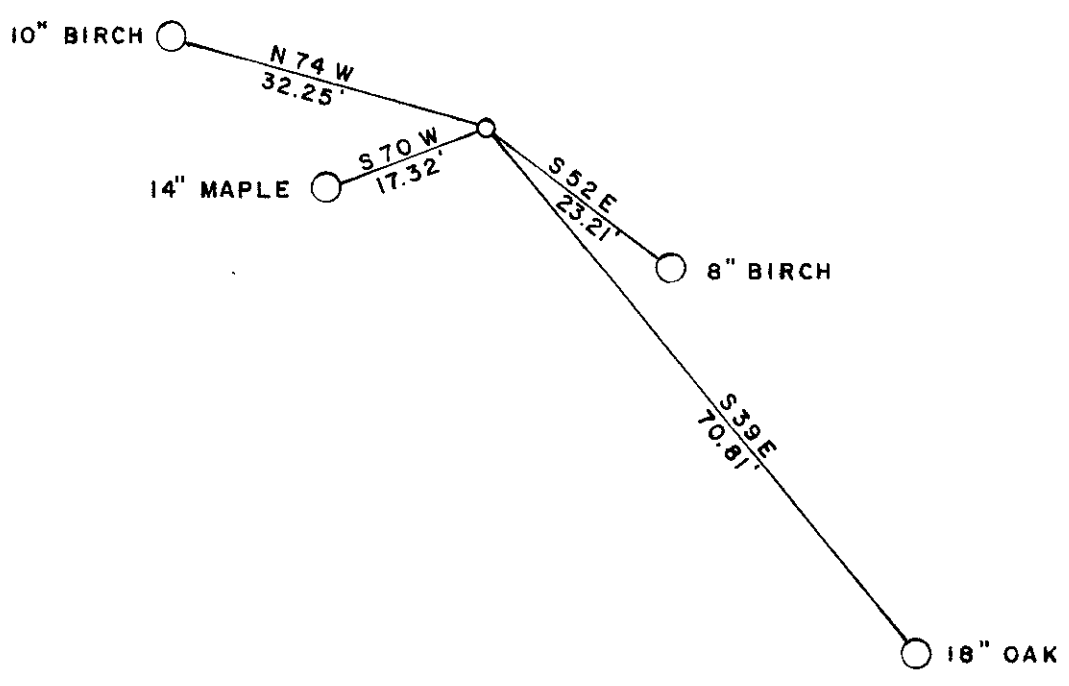
By: Doris Venge (Register of Deeds)  
Debra A. Piro Deputy



○ = Corner monument restored.

3608 31 2000

REGISTER OF DEEDS OFFICE  
ONEIDA COUNTY, WIS.  
JUN 11 1986  
M 8:19 P  
C TRIBE VERAGE KUEHN  
REGISTER OF DEEDS





CERTIFIED LAND CORNER RESTORATION FOR U.S. PUBLIC LAND SURVEY MONUMENT RECORD

State of Wisconsin } ss. County of Oneida

I William E. Bandow, do hereby certify that on the 19th day of November, 1982, I found evidence of the East corner of Section 31 Township 36 North, Range 8 East, Fourth Principal Meridian, as described hereon; and that from this evidence I established a new monument and accessories as described hereon to perpetuate the original location of this corner:

Description of original monument and accessories and subsequent restorations:

Corner set by William Daugherty in July, 1863. North between 31 & 32 40.00 set 1/4 post. BT's Y. Pine 12" N71E 111. No others near. Dorr found corner in June 1898. Made 2 BT's. Pine stump 16" N66 1/4 E 54 1/2, Dead N. Pine 12" S17W 54 1/4. Hall found corner and Dorr's BT's July, 1934. He set iron pipe with square plug in end. Made new BT's. Oak 9" S39E 1.08, Maple 5" S70W 0.269

Description of corner evidence found:

Found 2" iron pipe with square plug in end. Found Hall's BT's. Maple 14" S70W 17.32', Oak 18" S39E 70.81'

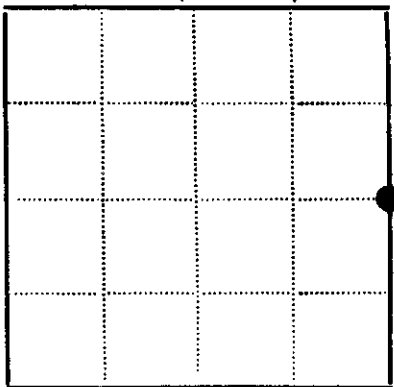
Description of monument and accessories I established to perpetuate the location of this corner:

Iron pipe remains in place. Put PK nail in the face blaze of the following BT's: Maple 14" S70W 17.32', Oak 18" S39E 70.81', Birch 10" N74W 32.25', Birch 10" S52E 23.21'

See back side for diagram



SECTION 31, T36N, R8E



- Corner monument restored (dot symbol)
- (square symbol)

Resident witnesses

Dated at Rhinelander Wisconsin, this 19th day of November 1982

Signature William E. Bandow Title Registered Surveyor (County Surveyor, Registered Land Surveyor, or other duly authorized official)

Surveyors Registration No. S-1182

Office of Reg of Deeds County of Oneida

I hereby certify that the within instrument was filed in this office for record on the 11 day of June 1986, and was filed in Book No. Page No. of County Records.

Signature Doris Verge Kudva Title Reg of Deeds Cynthia A. Pires Deputy

Township 36, Range 8, Section 31, Index No., Page No.

3608312000

X-5