

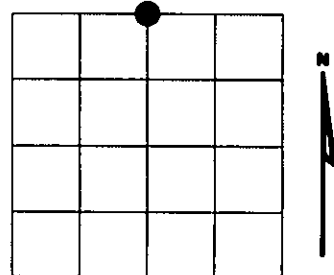
JUN 21 2016

AT _____ O'CLOCK _____ M
KYLE J. FRANSON
REGISTER OF DEEDS

U.S. PUBLIC LAND SURVEY MONUMENT RECORD

NOTE: This form is intended and designed to fulfill all requirements of Wisconsin Administrative Code, Chapter A-E 7.08 U.S. Public Land Survey Monument Record (3)(a)(b)(c)(d)(e)(f)(g)(h)(i). An additional sheet may be added if necessary to conform with said requirements.

(a) Corner location: Township 35 North
Range 08 East
Town of HARRISON
LINCOLN County, Wisconsin



Section 5

(b)(f)(g)(h) Description of monument found at this corner and if it was accepted, state all evidence (material, testimonial, occupational, plats, records, other monuments) used as a basis for accepting. If not accepted or if nothing was found, state evidence used as basis for establishing location. If reestablished through lost corner proportionate methods, indicate all monuments, distances and directions used to establish. Indicate type of monument found or set and sign post.

1860 - Original corner set by Alfred Millard

1937- Francis Fuchs found 1/4 post set in recent survey, replaced with 6"x6" granite stone, mounded with stone
Cedar 6" N52°E 15.0 Lks.
Cedar 6" S09°W 30.79 Lks.

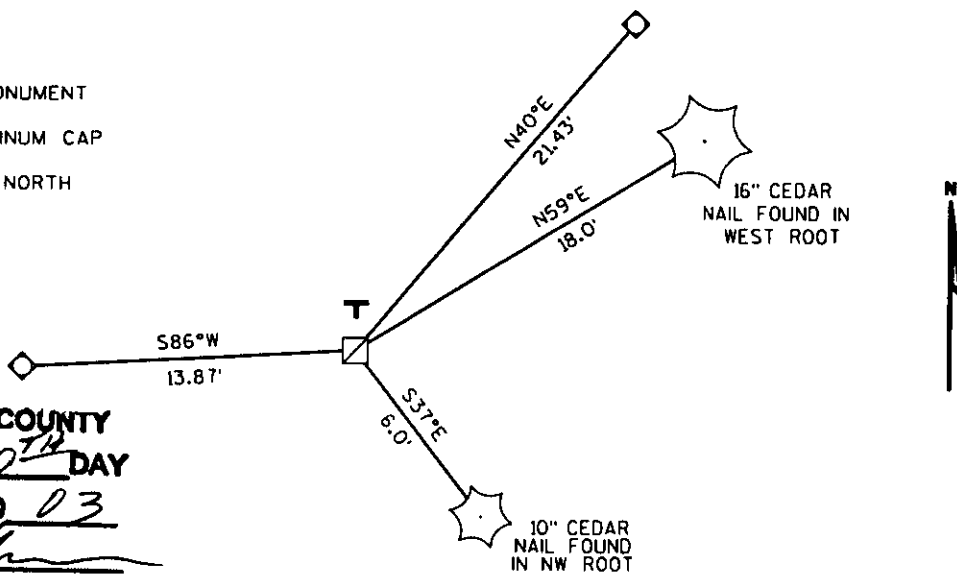
2003- I found 6" x 6" granite stone mounded with stone 2" dia. pipe with 3" square tablet stamped, plastic sign post 1' North
Nail in NW root 10" Cedar S37°E, 6.0'
Nail in West root 16" Cedar N59°E, 18.0'
4" sq. Cedar post scribed 1/4 S5 S32

Witnessed corner as shown below.

T36N	R8E
1/4	S32 S 5
T35N	R8E
	RIPCO

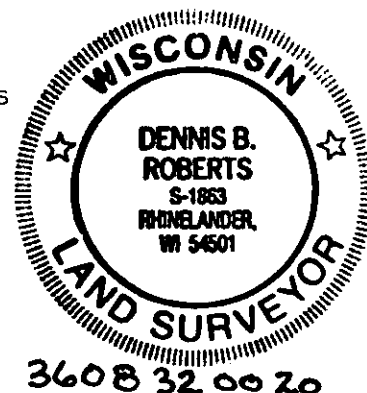
(c)(d)(e) Plan view of corner with ties to at least 4 witness monuments. If in disagreement with previously established corner, show the distances between the two corners and also indicate the ties to the disputed corner.

- ☐ FOUND 6"x6" GRANITE MONUMENT
- ◇ SET 3/4 ROD WITH ALUMINUM CAP
- T PLASTIC "T" SIGN SET 1' NORTH



RECEIVED AT LINCOLN COUNTY
COURTHOUSE THIS 10TH DAY
OF May 20 03
Tom Walker
LAND INFORMATION OFFICE

(i) I, Dennis Roberts, Registered Land Surveyor *S-1863, hereby certify that the corner location on this record was determined by me or under my direction and control and that this U.S. Public Land Survey Monument Record is correct and complete to the best of my knowledge and belief.



Index No. A-7

Dennis B. Roberts
Signature
5/22/03
Date