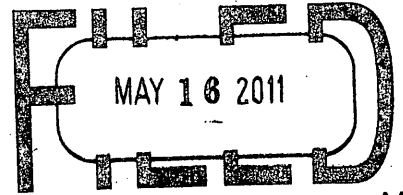


U.S. PUBLIC LAND SURVEY MONUMENT RECORD

Note: This form is intended and designed to fulfill all requirements of the Wisconsin Administrative Code, Chapter A-E 7.08 U.S. Public Land Monument Record (3)(a)(b)(c)(d)(e)(f)(g)(h)(i). An additional sheet may be added if necessary to conform with said requirements.

REGISTER OF DEEDS OFFICE
ONEIDA COUNTY, WIS.



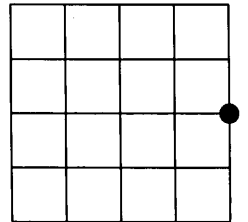
At _____ O'Clock _____ M
THOMAS H. LEIGHTON
REGISTER OF DEEDS

(a) CORNER LOCATION:

East Quarter corner of Section 32
Township 36 North
Range 8 East
Town of Cresent
County of Oneida
Wisconsin

COORDINATES

North: 137366.719
East: 238732.190
Control Station: OC 604
Latitude: 45° 34' 38.16683" N
Longitude: 89° 29' 25.83263" W
Datum: NAD-83 (1991)
Method: Traverse from RTK offsets



(b) HISTORY OF ORIGINAL CORNER ESTABLISHMENT

Original Surveyor: William E. Daugherty; Set quarter Section post
Date of Survey: Commenced - July 6th, 1863
Completed - July 16th, 1863

Original B.T.'S:
6" W. Pine; S 80° E; 107 links
No other near

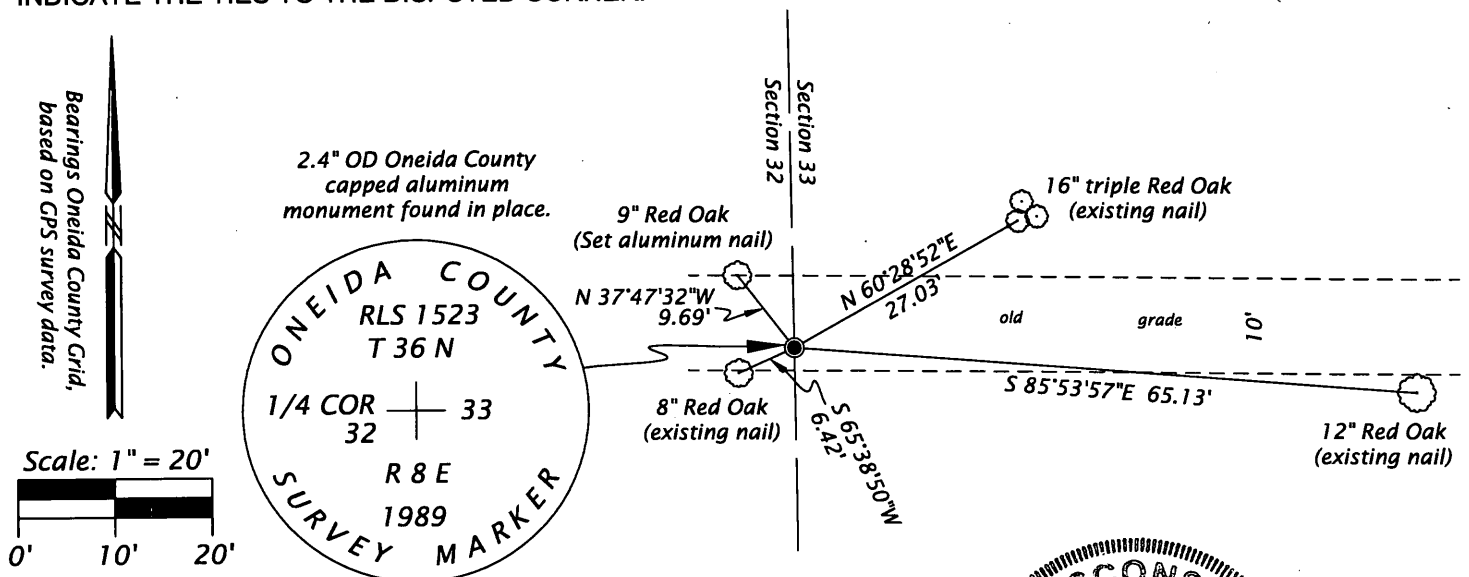
SECTION 32

(f)(g)(h) DESCRIPTION OF MONUMENT FOUND AT THIS CORNER AND IF IT WAS ACCEPTED, STATE ALL EVIDENCE (MATERIAL, TESTIMONIAL, OCCUPATIONAL, PLATS, RECORDS, OTHER MONUMENTS) USED AS A BASIS FOR ESTABLISHING LOCATION. IF NOT ACCEPTED OF IF NOTHING WAS FOUND, STATE EVIDENCE USED AS BASIS FOR ESTABLISHING LOCATION. IF REESTABLISHED THROUGH LOST CORNER PROPORTIONATE METHODS, INDICATE ALL MONUMENTS, DISTANCES AND DIRECTIONS USED TO ESTABLISH. INDICATE TYPE OF MONUMENT AND SIGN POST FOUND OR SET.

(SEE MORE HISTORY ON REVERSE)

02/23/2011 - I, James D. Rein, Registered Land Surveyor No. S-1234, found a 2.4" OD Oneida County capped aluminum monument in place, up 7" in an old ten foot wide road grade, with three (3) existing bearing trees with nails. I made one (1) new bearing tree and referenced to the existing trees as shown in sketch below.

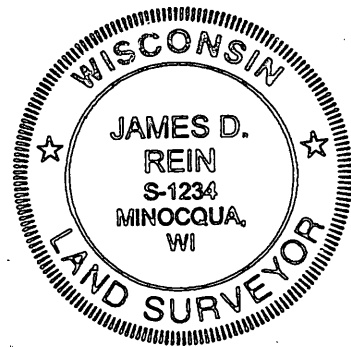
(c)(d)(e) PLAN VIEW OF CORNER WITH TIES TO AT LEAST 4 WITNESS MONUMENTS. IF IN DISAGREEMENT WITH PREVIOUSLY ESTABLISHED CORNER, SHOW THE DISTANCE BETWEEN THE TWO CORNERS AND ALSO INDICATE THE TIES TO THE DISPUTED CORNER.



(i) I, JAMES D. REIN, REGISTERED LAND SURVEYOR NO. S-1234 HEREBY CERTIFY THAT THE CORNER LOCATION ON THIS RECORD WAS DETERMINED BY ME OR UNDER MY DIRECTION AND CONTROL AND THAT THIS U.S. PUBLIC LAND SURVEY MONUMENT RECORD IS CORRECT AND COMPLETE TO THE BEST OF MY KNOWLEDGE AND BELIEF.

[Handwritten Signature]
SIGNATURE

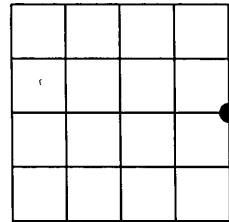
4-23-11
DATE



INDEX NO. 79

(a) CORNER LOCATION:

East Quarter corner of Section 32
Township 36 North
Range 8 East
Town of Cresent
County of Oneida
Wisconsin



SECTION 32

(CONTINUED HISTORY)

04/16/1908- D. H. Vaughn, County Surveyor, notes the $\frac{1}{4}$ post is in road and covered up. See Door/Vaughn book, page 129, dated 10/21/1909, on file with the Oneida County Surveyor's Office.

03/10/1987 - William H. Stuth, Registered Land Surveyor, prepared field notes for an Owen-Illinois Ownership Boundary Search, dated 09/29/1986, in both Sections 32 and Section 33, indicating found corner by others, with 6" Aspen, S 54° W, 15.2 feet.

11/21/1989 - Todd J. Loftus, Registered Land Surveyor, "found iron pipe in old road bed, set O.C.R.C." for a survey of the East-West quarter line, Section 33, revised 11/23/1989 and 04/01/1990, filed with the Oneida County Surveyor's Office as Map No. A551.

05/15/1991 - Todd J. Loftus, Registered Land Surveyor, notes corner as an "Oneida County Capped Aluminum Pipe" on a survey filed with the Oneida County Surveyor's Office as Map No. B2280.

11/18/2003 - Matthew E. Hognlund, Registered Land Surveyor, notes corner as an "Oneida County Aluminum Monument Found" on a survey filed with the Oneida County Surveyor's Office as Map No. B5401.