

CERTIFIED LAND CORNER RESTORATION

History of original corner establishment:

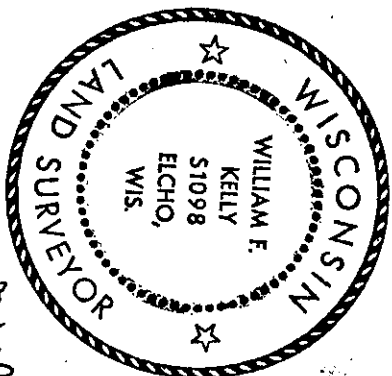
State of Wisconsin }  
County of LINCOLN } ss.

I WILLIAM F. KELLY do hereby  
certify that on the 29th day  
of DECEMBER, 1924, I found  
evidence of the SECTION  
corner of SECTIONS 33, 34, 4, 3,  
Township 35 North, Range  
8 EAST, Fourth, Principal Meridian,  
as described hereon; and that from this evidence  
I established a new monument and accessories  
as described hereon to perpetuate the original  
location of this corner.

Resident witnesses:

Description of corner evidence found:

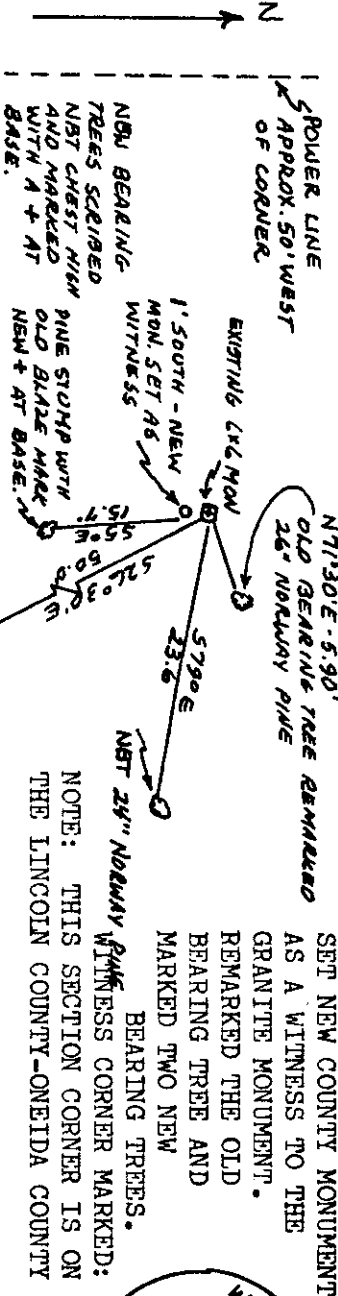
LOCATED 6" x 6" GRANITE MONUMENT MARKED  $\frac{33}{4} \frac{34}{3}$ . ALSO FOUND THE STUMP OF A PINE TREE  
WITH BLAZE MARK AND AN OLD BEARING TREE WITH BLAZE MARKS. 90% GROWN OVER. MONUMENT SET IN  
GROUND WITH STONES PLACED AROUND IT.



*William F. Kelly*

Index No. Z-13  
5C Cor. 33-36-8  
From Lincoln City Files

Description of monument and accessories I established to perpetuate the original location of this corner.



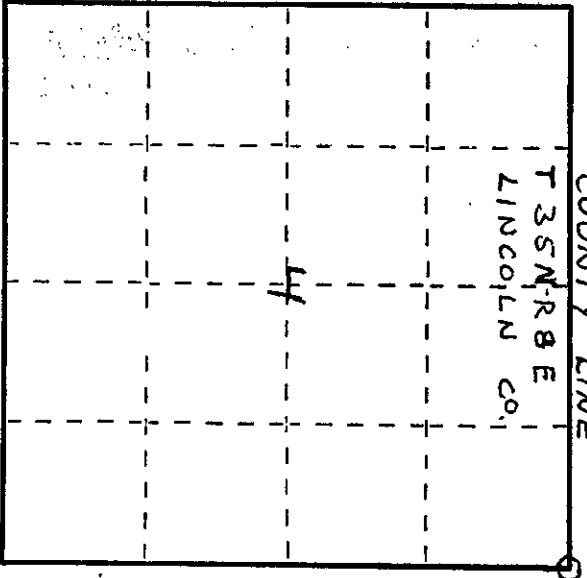
Dated at ELCHO, Wis., this 29th day of DECEMBER, 1924

Signature *William F. Kelly* Title REGISTERED LAND SURVEYOR Registration No. S 1098  
(County Surveyor, Registered and Surveyor, or other duly authorized official)

Office of Register of Deeds, County of \_\_\_\_\_, I hereby certify that the within  
instrument was filed in this office for record on the \_\_\_\_\_ day of \_\_\_\_\_, 19\_\_\_\_  
at \_\_\_\_\_ o'clock \_\_\_\_\_ M.

(Register of Deeds)

By \_\_\_\_\_ Deputy



○ = Corner monument restored.

3608330000